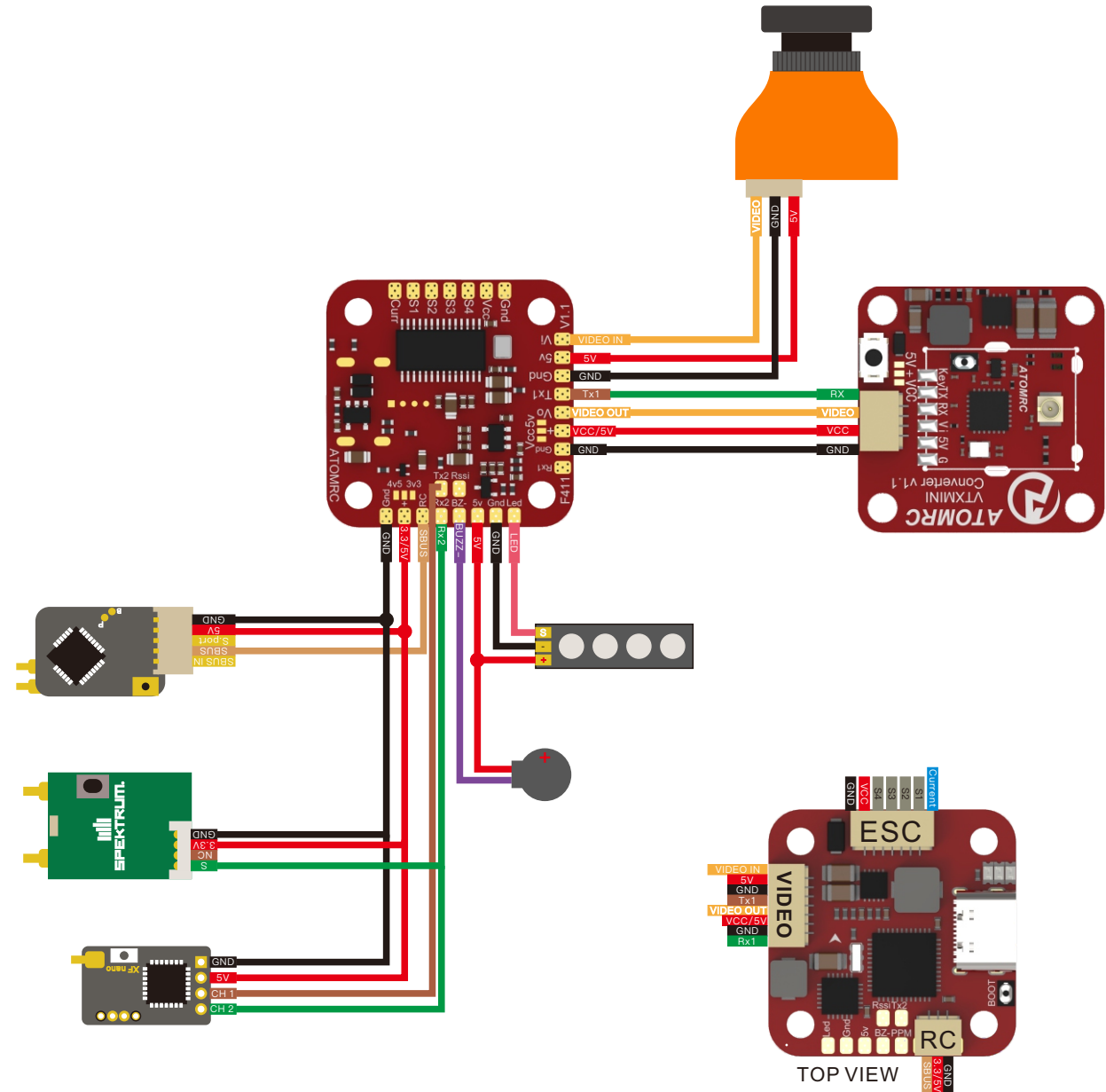


ATOMRC EXCEED F405 Wiring Diagram



Specifications

MCU: 168MHZSTM32F411
IMU: MPU6000 accelerometer/gyro (SPI)
OSD: Betaflight OSD
UART: 2
PWM/Dshot Output: 6
BEC: 3.3/5V
Built in inverter for SBUS (RX2)
Smartaudio & Tramp VTX protocol supported
WS2812 Led Strip : Yes
Beeper : Yes
RSSI: Yes
USB connector: Type C
TARGET: ATOMRCF411

Package include;

1* ATOMRC EXCEED F411 FC
4* silicon damper
1* JST 1.0mm 3PIN connector for receiver
1* JST 1.0mm 6PIN connector for ESC
1* JST 1.0mm~1.25mm 7PIN connector for Camera and VTX