

TE series isolation transformer



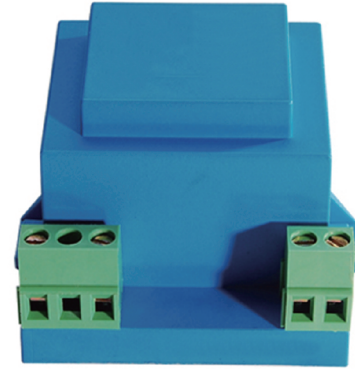
Model:TE3515

Characteristics:

Sub-plate mount, Vacuum Epoxy Encapsulated,
Crimping terminal output.

Technical Index:

Technical Index: Sub-plate mount
Flame resistance : UL94-V0
Insulation class: B
Operation temperature: -30°C ~ +70°C
Work frequency: 50Hz ~ 60Hz
Dielectric strength: 3.75KV 50Hz 1min

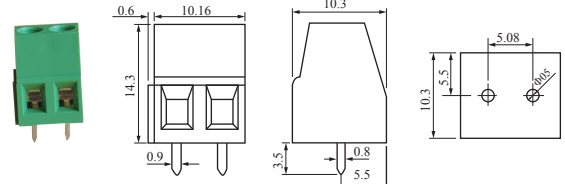


Technical Parameters table:

Primary voltage	110/220/230/380	V
Primary voltage range	±10	%
Voltage regulation	≤26	%
Power	3.5	VA
Temperature rising	≤22	°C
No load loss	≤0.5	W
weight	130	g

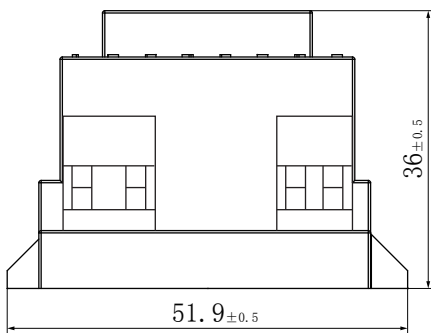
Secondary voltage	Secondary no load voltage	Secondary full load current
6V	7.56V	583mA
7.5V	9.45V	467mA
9V	11.34V	389mA
12V	15.12V	292mA
15V	18.9V	233mA
18V	22.68V	194mA
24V	30.24V	146mA

Connector Illustration:

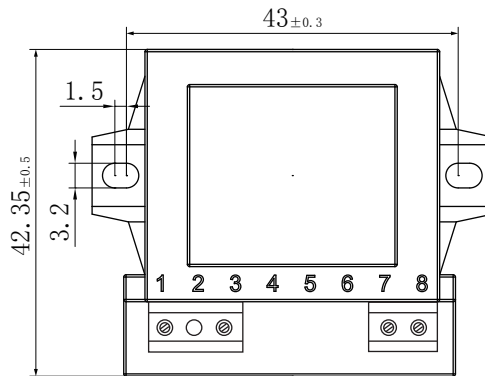


PCB direct welding crimp terminal, spacing 5.08

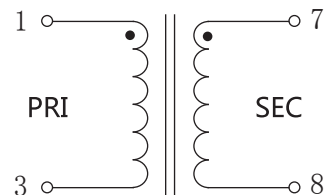
Dimension (in mm) :



Front View



Top View



Schematic Diagram