

# TA2032FL Through core type precision current transformer **YHDC**®

## Characteristics:

Epoxy potting, iron core, fully closed, remote monitoring of electrical load, as the input signal of the electronic control system, phase loss indication, electric quantity measurement, motor running state monitoring.

## Technical index:

- Mounting type: Plate installation
- Material of the core: Silicon steel sheet
- Flame resistance: UL94-V0
- Execution standard: GB20840-2014
- Operating temperature: -20°C ~ +70°C
- Storage temperature: -30°C ~ +80°C
- Frequency range: 50Hz-60Hz
- Dielectric strength: 3.5KV 50Hz 1min

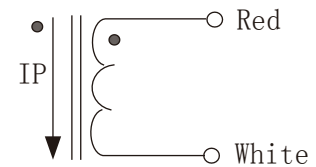
Product picture : (the printed words are for reference only, subject to the actual product)



## Electrical parameters: ( The following parameters are typical values and actual values will be subject to product testing )

Model	TA2032FL-100	TA2032FL-200	TA2032FL-300	Unit
Rated input	300	400	500	A
Rated output	300	200	167	mA
Turns ratio	1: 1000	1: 2000	1: 3000	
Linearity	≤0.5	≤0.5	≤0.5	%
Sampling resistance	10	12	15	Ω
Weight	178			g

## Schematic diagram:



current output type.

the secondary is not allowed to open.

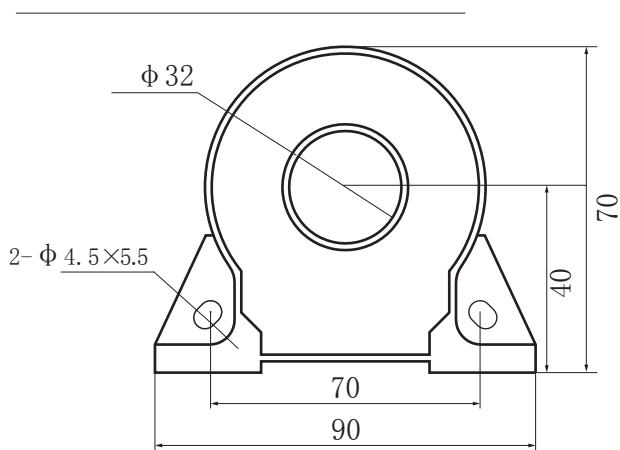
## Specifications of lead wire/color/length:

Specifications of lead wire: 0.3mm<sup>2</sup> Red and white soft wire

color of lead wire: Red, White

length of lead wire: 40cm (40-42cm)

## Dimensions ( in mm ± 0.5 ) :



## Wire direction

Print surface ← Epoxy surface

