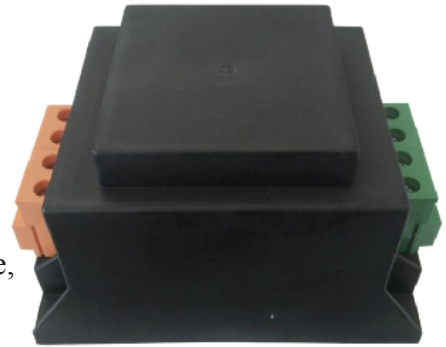


### Characteristics:

- Single crystal copper enameled wire
- High quality core - h18/0.35 (annealing)
- PBT engineering plastics, environmental protection, flame retardant, 120 degree of deformation
- Vacuum sealing, high temperature of 100 °C / 6 hours aging, life 20 years, high electric strength
- Reasonable structure, easy installation, low noise, strong earthquake resistance, airtight and waterproof



### Technical Index:

- Technical Index: Plate installation
- Flame resistance : UL94-V0
- Insulation class: B
- Operation temperature: -30 °C ~+70 °C
- Work frequency: 50Hz~60Hz
- Dielectric strength: Formal test: primary/secondary 20KVmax AC/1min 20mA  
Factory test: primary/secondary test 20KVmax AC/1s 20mA

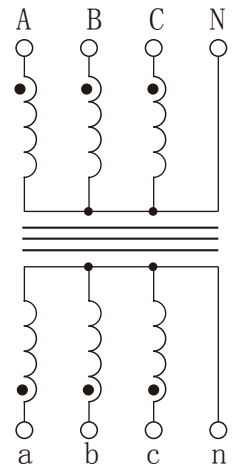
Electrical parameters: ( The following parameters are typical values and actual values will be subject to product testing )

Primary input voltage	230V	380V	690V	1000V	1140V	2000V	3000V
Primary voltage range	± 20%						
Secondary output voltage	5V/10V/100V						
Load impedance	≥ 10K Ω						
Accuracy	0.5%/1%						
Primary/secondary electrical resistance	3.5KV	3.5KV	5KV	5KV	5KV	10KV	20KV
weight	2.2Kg						

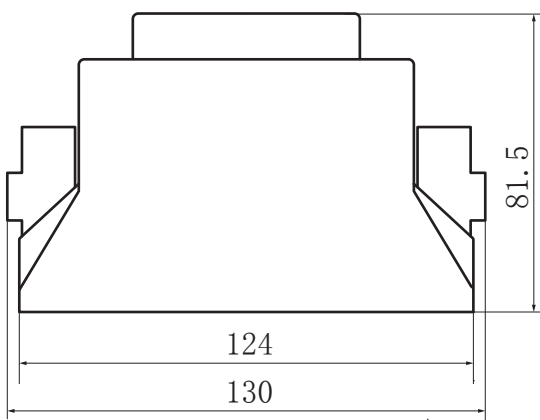
### Note

①Standard: input/output are star connection, line voltage ②Suggestion: After wiring, seal the terminals with glue ③If customized triangle connection, input voltage up to 1000V

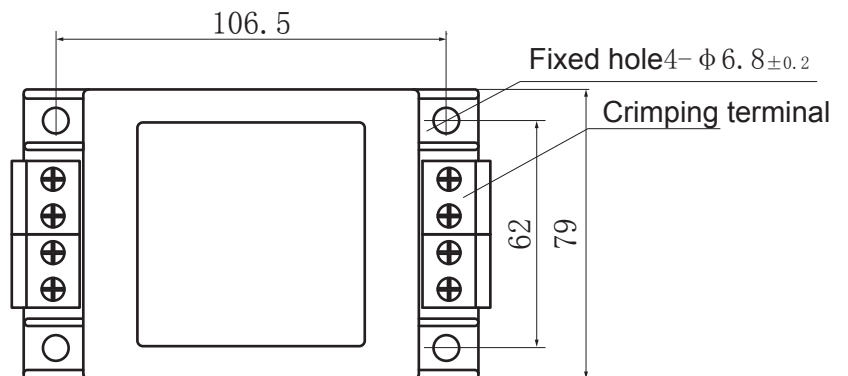
### Schematic diagram:



### Dimension(mm±0.5):



Side view



Top view