

## Φ45mm Aperture Split core current transformer



Front view



Opening view

### Characteristic

- Opening and closing structure
- easy for installation
- Lead output
- Plate mounting

### Product application

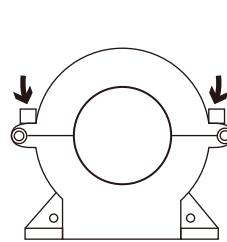
- Portable instrument
- Household metering
- Monitor motor load

### Product advantage

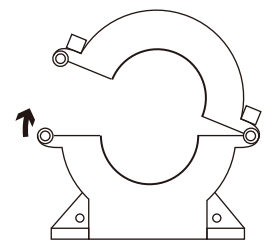
- Economic and practical
- Improve efficiency
- High cost performance

### Installation diagram

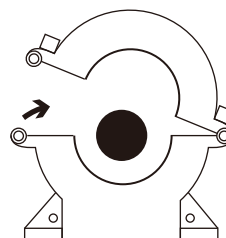
Primary threading method



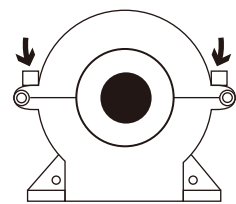
1. Unscrew the screw



2. Open up



3. In the lead



4. Buckle and screw

**Typical technical index:**

- Material of core——Silicon steel sheet
- Working voltage——Phase voltage $\leq 720V$
- Working temperature—— $-20^{\circ}C \sim +60^{\circ}C$
- Storage temperature—— $-25^{\circ}C \sim +65^{\circ}C$
- Frequency range—— $50Hz \sim 60Hz$
- Dielectric strength——output (outputbare conductor) AC 3.5KV/1min 5mA 50Hz
- Weight——409g

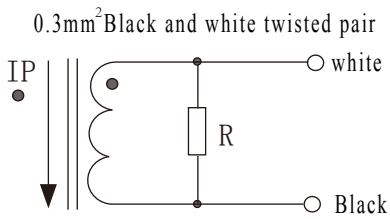
**Electrical parameters:** ( The following parameters are typical values and actual values will be subject to product testing )

Can be made according to user requirements parameters

	Input current A	Output current A	Rated output power VA			number of turns
			0.5grade	1grade	3grade	
1A Output	50A	1A	-	1	2	1
	100A	1A	1	1.5	2.5	1
	200A	1A	1.5	2.5	3.75	1
	500A	1A	2.5	5	7.5	1
	600A	1A	2.5	5	7.5	1
	800A	1A	3.75	7.5	10	1
	1000A	1A	5	7.5	10	1
5A Output	250A	5A	-	2	3.75	1
	300A	5A	1.5	2.5	3.75	1
	400A	5A	1.5	2.5	3.75	1
	500A	5A	1.5	3.75	5	1
	600A	5A	2.5	5	7.5	1
	800A	5A	3.75	5	10	1
	1000A	5A	5	7.5	10	1

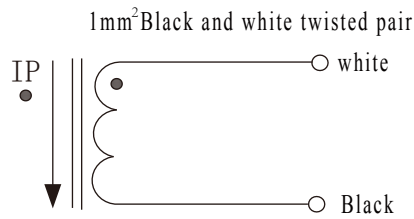
	Input current A	Output voltage V	Accuracy %	Sampling resistor $\Omega$	Load resistance K $\Omega$	number of turns
0.333V Output	50A	0.333V	1%	built-in	>10K $\Omega$	1
	100A	0.333V				
	200A	0.333V				
	500A	0.333V				
	600A	0.333V				
	800A	0.333V				
	1000A	0.333V				

**Wiring diagram:**



Voltage output type

Secondary are not allowed to short circuit



Current output type

secondary is not allowed to open the way

**Cable:**

Lead specification:

- 1mm<sup>2</sup>Black and white twisted pair
- 0.3mm<sup>2</sup>Black and white twisted pair

Lead color: white, Black

Lead length: 1m

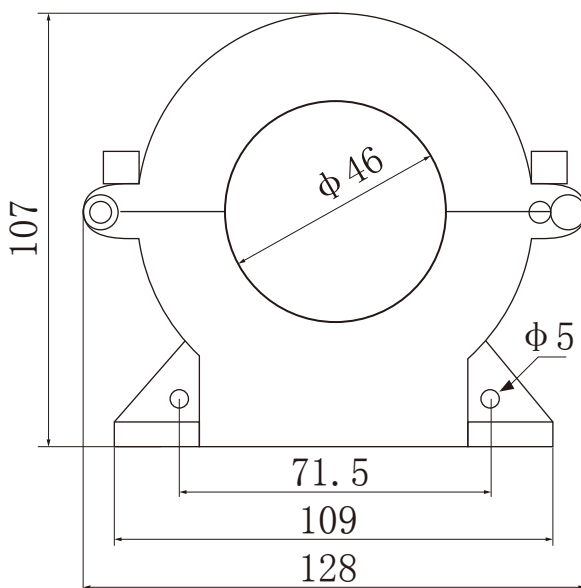
**Instructions:**

1.Primary threading direction: mark by arrow

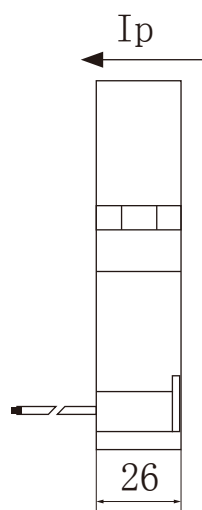
2.Secondary output direction:

white line → black line

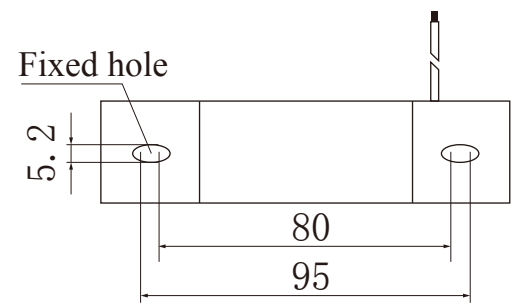
**Outline size: (in:mm)**



Front view



Side view



Bottom view