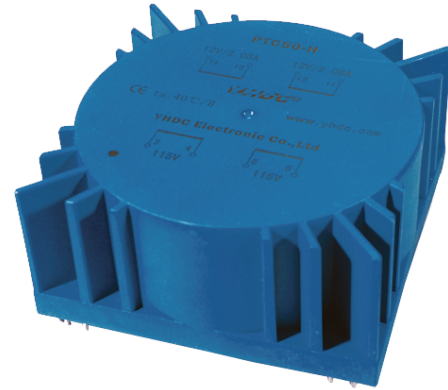


## Model:PTC50

### Characteristics:

Small leakage,Low noise,High efficiency,Low no load current,PCB mounting,Used for supper acoustics,Medical equipment,Military engineering,Precision instrument,using the imported high quality toroidal core Primary working voltage:110×2/115×2/120×2(/Can be customized according to customer's requirements)



### Technical index:

Mounting type:PCB

Flame resistance:UL94-V0

Insulation class:B grade

Work temperature:-30℃~+60℃

Frequency range:50Hz~60Hz

Dielectric strength:P1/P2: 600V AC

S1/S2: 600V AC

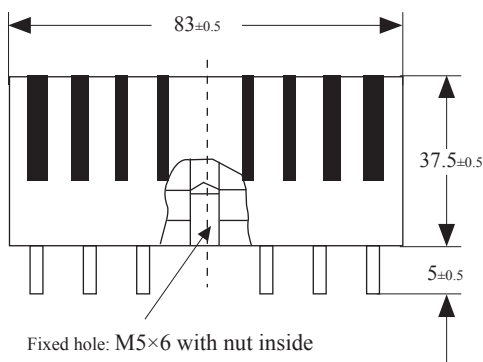
P/S: 4000V AC

### Electrical data:

Primary voltage	110×2/115×2/120×2	V
Primary voltage range	±10	%
Voltage regulation	≤14	%
Power	50	VA
Temperature rising	≤20	℃
No load loss	< 1	W
weight	660	g

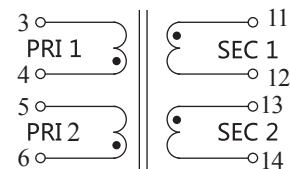
Secondary voltage	Secondary no load voltage	Secondary full load current
7V×2	8.1V×2	3571mA
9V×2	10.4V×2	2777mA
12V×2	13.8V×2	2083mA
15V×2	17.3V×2	1666mA
18V×2	20.7V×2	1388mA
22V×2	25.4V×2	1136mA

### Dimension(mm):



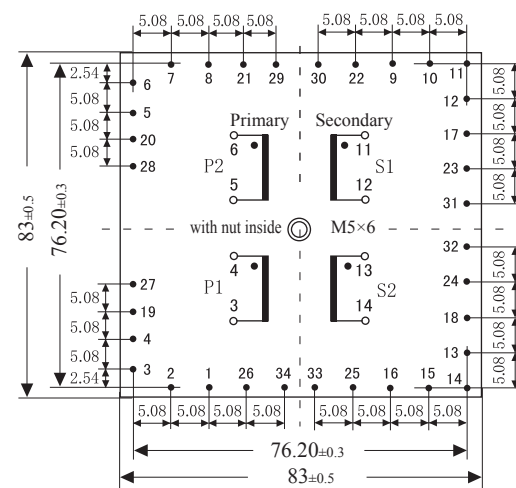
Front View

### Schematic Diagram:



Series connection: 4-5 short connection, 3-6 input

Parallel connection: 4-6 short connection, 3-5 input



Bottom View