

LN102 common mode choke



Product features:

It is used for switching power supply, suppressing common mode interference signal.

Technical index:

- Installation method: PCB
- Flame resistance: UL94-V0
- Operating temperature: $-20^{\circ}\text{C} \sim +100^{\circ}\text{C}$
- Storage temperature: $-20^{\circ}\text{C} \sim +100^{\circ}\text{C}$
- Operating voltage: 250V
- Inrush current: 20 times the rated current (10 ms)
- Dielectric strength: 1.5KV/1min (between two coils)
4KV/1min (between coil&shell)

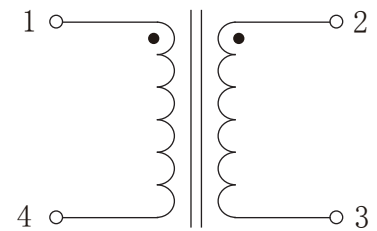
Product picture : (the printed words are for reference only, subject to the actual product)



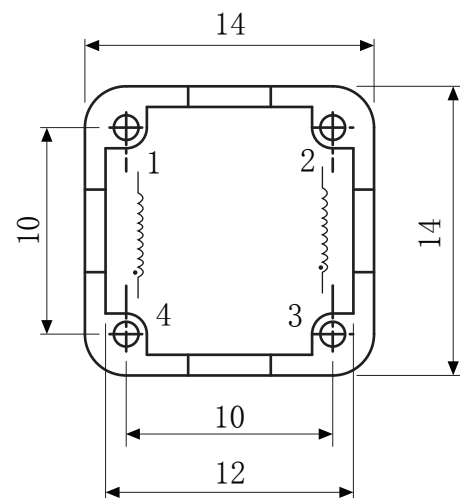
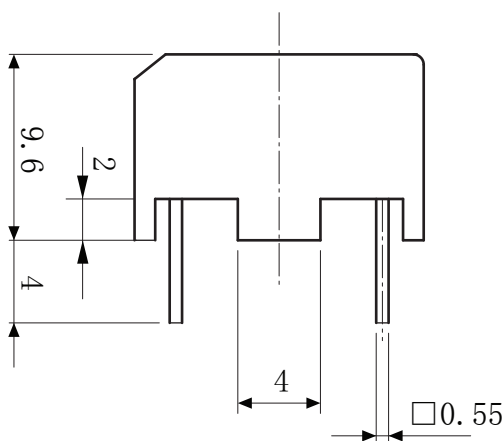
Electrical parameters: (The following parameters are typical values and actual values will be subject to product testing)

Model	LN102 -0.3	LN102 -0.6	LN102 -1	LN102 -1.5	LN102 -2	Unit
Rated current	0.3	0.6	1	1.5	2	A
Inductance	12	4.4	3	1.6	1.1	mH
DC resistance	500	385	205	100	70	mΩ
Inductance error	-30% ~ +50%					%
Inductance test conditions	10KHz, 0.3V					
Weight	5					g

Schematic diagram:



Dimensions (in mm ± 0.5) :



Bottom view