

Characteristics:

Applicable for triggering of single pulse SCR below 100A.

Product picture print for reference only, subject to the actual product

Technical Index:

Installation method: PCB

Flame resistance : UL94-V0

Operation temperature: -20℃ ~ +50℃

Storage temperature: -30℃ ~ +85℃

Work frequency: 100Hz ~ 1KHz

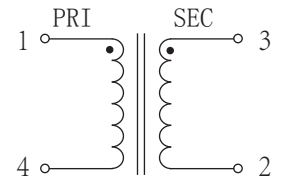
Dielectric strength: Pri/Sec 2.5KV 50Hz 1min



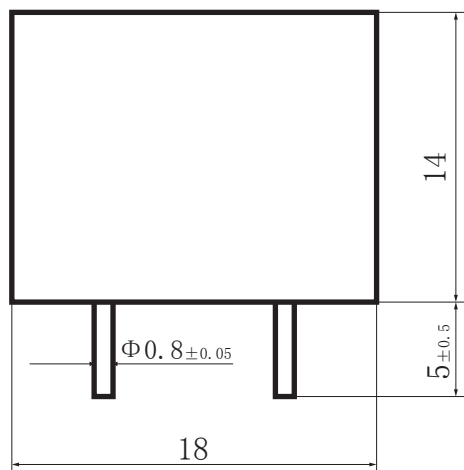
Electrical parameters: (The following parameters are typical values and actual values will be subject to product testing)

Project	Parameter	Model	KMB471-101	KMB471-201	KMB471-301	Unit
	Vout microsecond integral		4000	7500	12000	μvs
	Input pulse amplitude		8	15	24	V
	Output pulse amplitude		≥ 5.7	≥ 5.5	≥ 5.5	V
	Turns ratio		1 : 1	2 : 1	3 : 1	
	Load resistance		100	100	100	Ω
	duty ratio		1 : 2	1 : 2	1 : 2	
	Pulse width		500	500	500	μs
	Leading edge time		≤ 5	≤ 5	≤ 5	μs
	Main circuit operating voltage		380	380	380	KV
	Weight		13	13	13	g

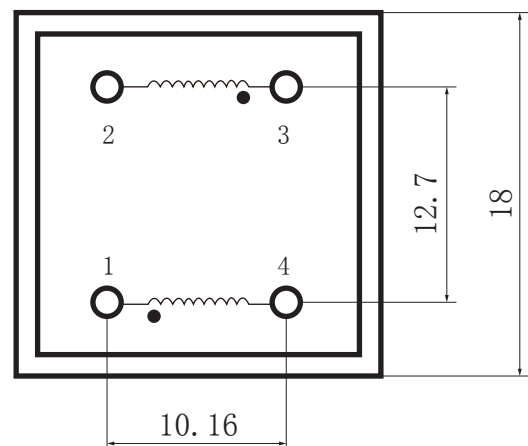
Schematic Diagram :



Dimensions (in mm±0.5) :



Top view



Bottom View