

Characteristics:

Suitable for 100A SCR pulse train trigger.

Technical Index:

Installation method: PCB

Flame resistance : UL94-V0

Operation temperature: -20 °C ~ +50 °C

Storage temperature: -30 °C ~ +85 °C

Work frequency: 100Hz~1KHz

Dielectric strength: Pri/Sec 2.5KV 50Hz 1min

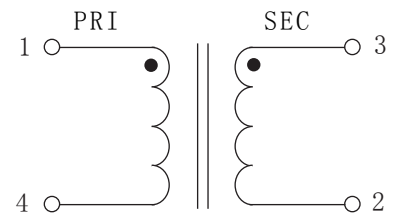
Product picture print for reference only,
subject to the actual product



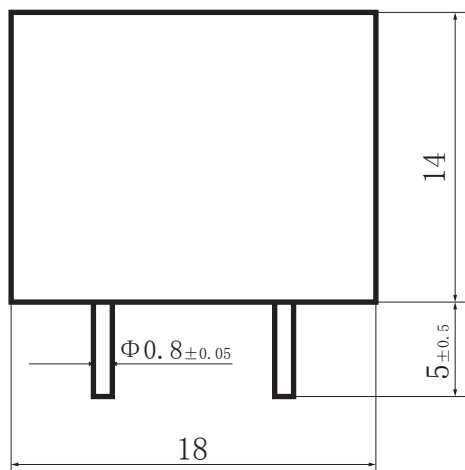
Electrical parameters: (The following parameters are typical values and actual values will be subject to product testing)

Project	Parameter	Model	KMB471-101	KMB471-201	KMB471-301	Unit
	Vout microsecond integral		4000	7500	12000	μvs
	Input pulse amplitude		8	15	24	V
	Output pulse amplitude		≥5.7	≥5.5	≥5.5	V
	Turns ratio		1:1	2:1	3:1	
	Load resistance		100	100	100	Ω
	duty ratio		1:2	1:2	1:2	
	Pulse width		500	500	500	μs
	Leading edge time		≤5	≤5	≤5	μs
	Main circuit operating voltage		380	380	380	KV
	Weight		13	13	13	g

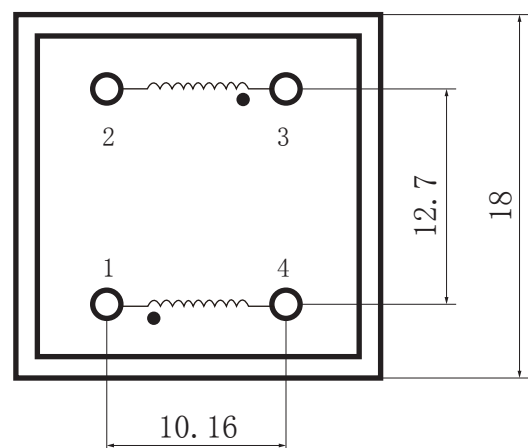
Schematic Diagram:



Dimensions (in mm±0.5) :



Top view



Bottom View