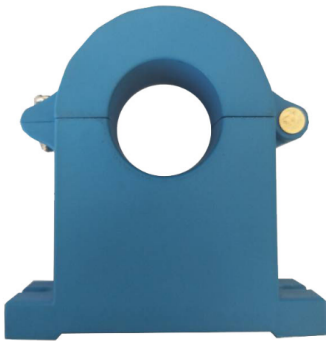


Hall split core current sensor

Open loop split core type, Sub-plate installation, terminal output. Detect DC, AC and pulse current, High insulation between primary side and the vice side circuit.



Front view



Back view



Fixed hole view



Opening view

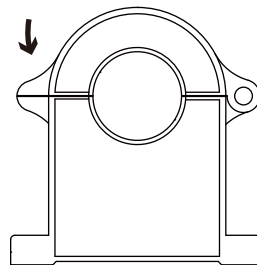
Installation diagram

Product features

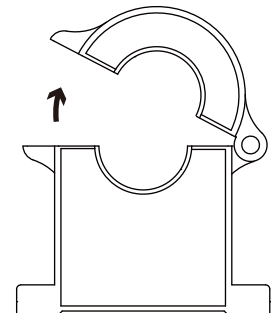
- Light weight
- Low power consumption
- Good linearity
- No insertion loss
- Fast response time
- Good anti-interference ability

Product application

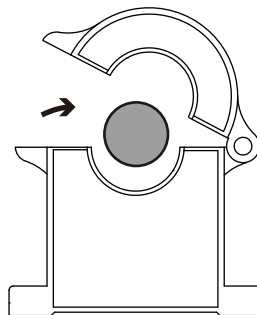
- Railway
- Metallurgical
- Welding machine
- Robot
- Motor
- Inverter power supply
- Variable frequency governor
- Uninterrupted power supply and communication power supply



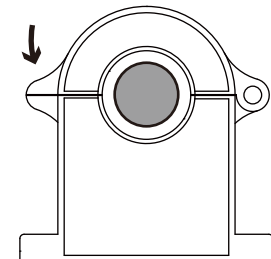
1. Loosen the screw



2. Open up



3. In the lead



4. Tighten the screws

Electrical parameters: (The following parameters are typical values and actual values will be subject to product testing)

Remarks:

I _p	Rated input	±50A ±100A ±200A ±300A ±400A ±500A ±600A	Standard input
I _{pm}	Input measurement range	±75A ±150A ±300A ±450A ±600A ±750A ±800A	Default is 1.5 times of rated input, and maximum ≤800A (saturation)
V _{out}	Rated output	±4V	Standard output
X	Accuracy	1%	I=I _p
ε _L	Linearity	1%	I=0~±I _p
V _c	Supply voltage	±12V/±15V	One or the other Supply voltage range±5%
I _c	Current consumption	≤±16mA	Reference will be subject to the measured
R _l	Load impedance	≥10K Ω	Collection port impedance while lower voltage affect accuracy
V _{oe}	Zero offset voltage	≤±15mV	T _A =25℃
T _r	Response time	≤5 μ s	Reference will be subject to the measured
N.w	Weight	94g	Reference will be subject to the measured
T _a	Operation temperature	-10~+70℃	
T _s	Storage temperature	-25~+70℃	
B _w	Band width	DC~25KHz	Factory test according to DC
V _d	Delectric strength	2.5KV 50Hz 1min	

Instructions for use:

1. According to the connection mode of correct connection
2. The direction shown by the arrow is positive
3. With hole measurement, response time and following the speed for the best
4. Faulty wiring can lead to product damage and output uncertainty

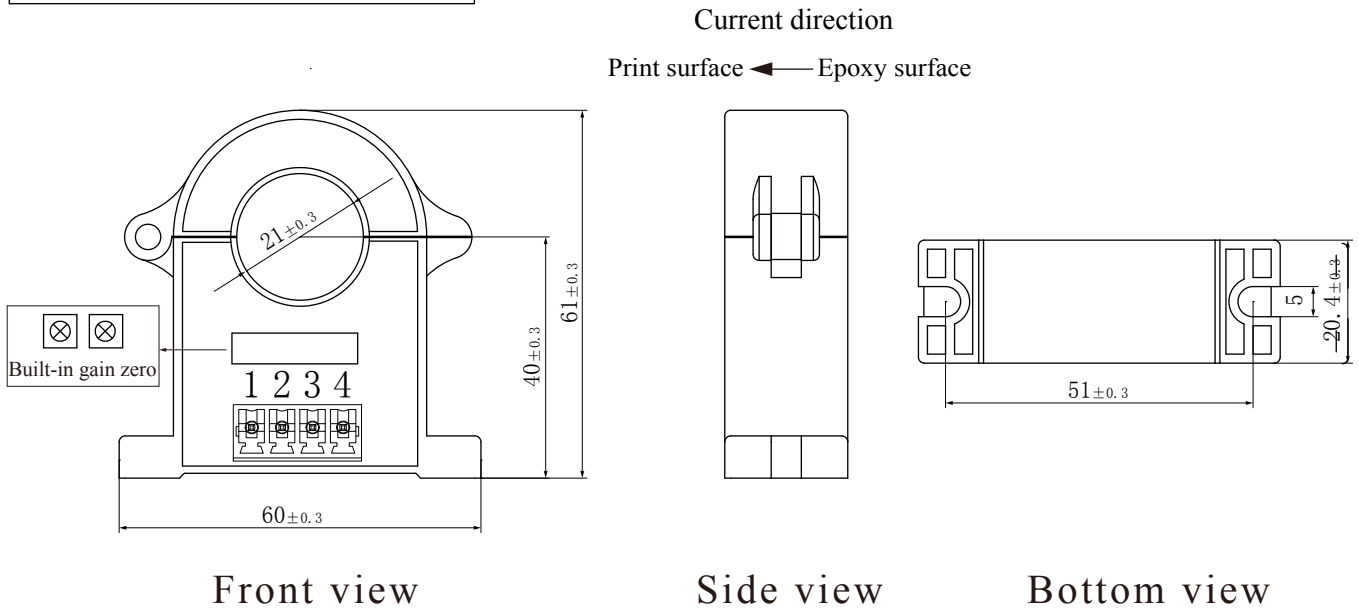
Safe operation:

- *Please read this specification carefully before use.
- *When you need to move the product, please be sure to disconnect the power and all the connected cables.
- *If found shell, devices attached to the fixed parts, wire, or have any damaged, please immediately deal with hidden dangers.
- *If there is any doubt about the safe operation of the equipment, the equipment and the corresponding accessories should be closed immediately, and the fastest time for troubleshooting.

Proclamations:

As our products are constantly being improved and updated, we reserve the right to modify the content of this specification at any time without prior notice.

Dimensions(in mm±0.5) :

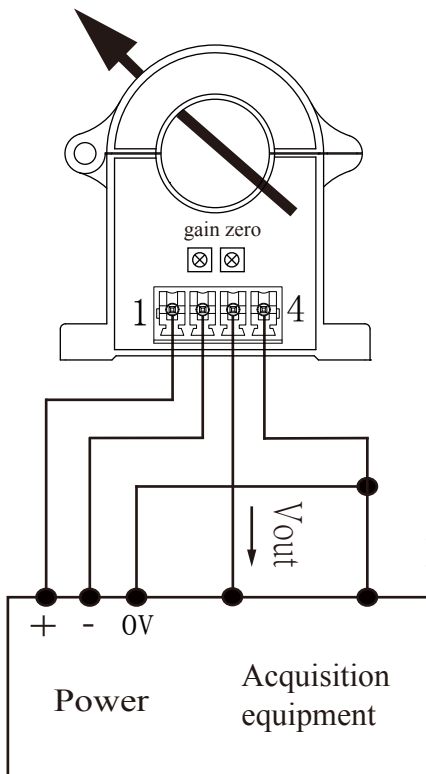


Connector Illustration



Crimping terminal fast plug KF2EDGK-3.81-4P, spacing 3.81

Wiring diagram:



Terminal definition:

- 1: +V
- 2: -V
- 3: Vout
- 4: 0V

Potentiometer definition:

Left: gain
right: zero

※Detection:

- ① Choose the auxiliary power supply with small ripple ($\leq 10\text{mV}$)
- ② Switch on auxiliary power
- ③ The auxiliary power is connected to the sensor
- ④ The sensor detects the primary current