

D4215



Characteristics:

It is used to drive IGBT, MOS pipe and transmit high-frequency signal isolation.

Technical Index:

Installation method: PCB

Flame resistance : UL94-V0

Operation temperature: $-20^{\circ}\text{C} \sim +50^{\circ}\text{C}$

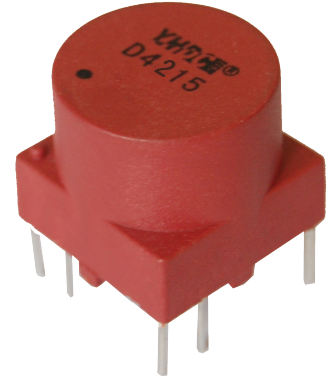
Storage temperature: $-30^{\circ}\text{C} \sim +85^{\circ}\text{C}$

Work frequency: 10KHz~100KHz

Dielectric strength: Pri/Sec 4.5KV 50Hz 1min

Sec/Sec 500V 50Hz 1min

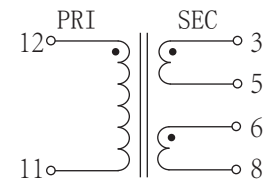
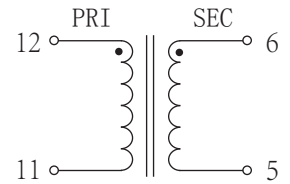
Product picture print for reference only, subject to the actual product



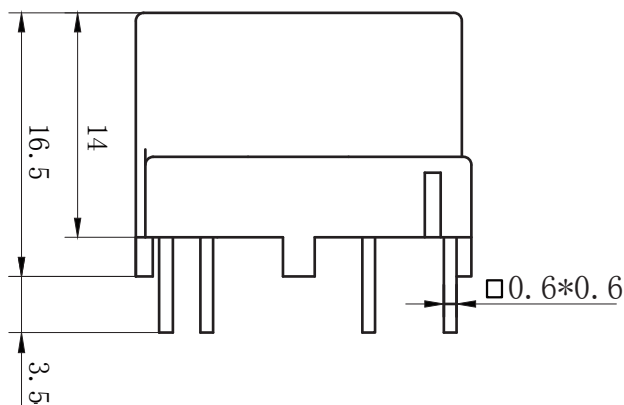
Schematic Diagram :

Electrical parameters: (The following parameters are typical values and actual values will be subject to product testing)

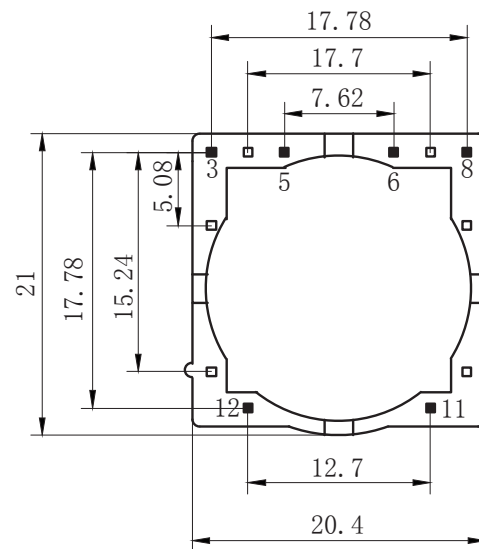
Project	Model Parameter	D4215	D4215	D4215	D4215	D4215	D4215	Unit
		-101	-201	-301	-111	-211	-311	
Vout microsecond integral		300	300	300	300	300	300	μvs
Input pulse amplitude		15	20	30	15	20	30	V
Output pulse amplitude		≥ 13	≥ 8	≥ 8	≥ 13	≥ 8	≥ 8	V
Turns ratio		1:1	2:1	3:1	1:1:1	2:1:1	3:1:1	
Load resistance		100	100	100	100	100	100	Ω
duty ratio		1:2	1:2	1:2	1:2	1:2	1:2	
Pulse width		20	15	10	20	15	10	μs
Leading edge time		≤ 0.5	≤ 0.5	≤ 0.5	≤ 0.5	≤ 0.5	≤ 0.5	μs
Main circuit operating voltage		500	500	500	500	500	500	V
Weight								g



Dimensions (in $\text{mm} \pm 0.5$) :



Front view



Bottom View