

Solid core power distribution current transformer



Front view



Quantity*4

Sub-plate mounting



Quantity*2

Platen mounting



Quantity*2

35mmDin-rail mounting

Accessories drawing

Accessories drawing

Accessories drawing

Product features

- Through cable or copper row
- Terminal output
- Three mounting methods for sub-plate/platen/parallel din-rail

Product application

Current measurement, monitoring and protection of:

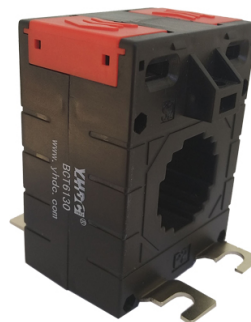
- AC motor
- Lighting device
- Complete cabinet
- Industrial network
- air compressors



Din-rail mounting

Product advantage

- Economical and practical, improve efficiency
- The terminal design has sufficient safety distance at both ends
- The end cap is a buckled structure with high mechanical strength
- Available in a variety of sizes (other models in the same series)



Sub-plate mounting



Platen mounting

Typical technical index:

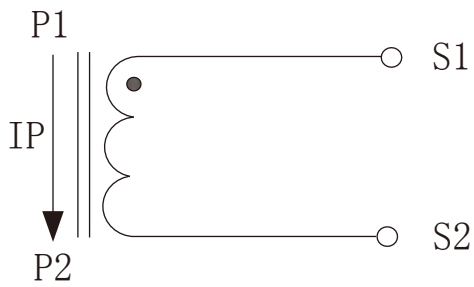
- Material of core——Silicon steel sheet
- Working voltage——Phase voltage $\leq 720V$
- Working temperature—— $-20^{\circ}C \sim +60^{\circ}C$
- Storage temperature—— $-25^{\circ}C \sim +65^{\circ}C$
- Frequency range—— $50Hz \sim 60Hz$
- Fair resistance——UL94-V0
- Dielectric strength——Output/Outer shell AC 3.5KV/1min 5mA 50Hz
- Weight--318g

Electrical parameters: (The following parameters are typical values and actual values will be subject to product testing)

Can be customized parameters

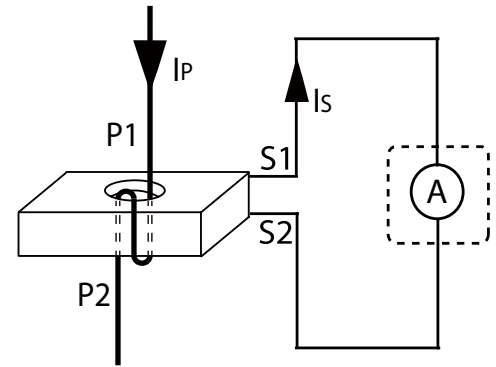
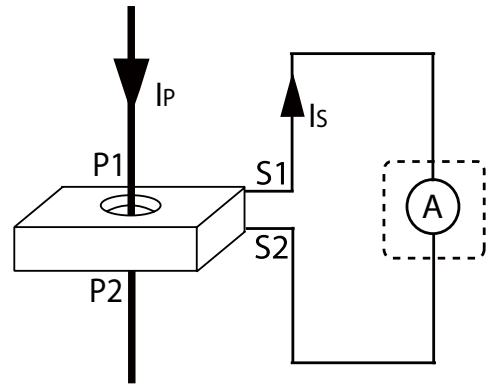
	Input current A	Output current A	Rated output powerVA					Number of turns
			0.2S grade	0.2 grade	0.5S grade	0.5 grade	1 grade	
0.1A Output	100A	0.1A	-	20	-	20	20	1
	200A	0.1A	-	20	-	20	20	1
	250A	0.1A	-	20	-	20	20	1
	300A	0.1A	-	20	-	20	20	1
1A Output	100A	1A	1	1	1	1.5	2.5	1
	150A	1A	1.5	1.5	1.5	3.75	5	1
	200A	1A	2.5	2.5	2.5	5	7.5	1
	250A	1A	2.5	2.5	3.75	5	10	1
	300A	1A	2.5	5	3.75	5	10	1
5A Output	50A	5A	1	1	1	1.5	2.5	2
	100A	5A	1	1	1	1.5	2.5	1
	150A	5A	1.5	1.5	1.5	3.75	5	1
	200A	5A	2.5	2.5	2.5	5	7.5	1
	250A	5A	2.5	2.5	3.75	5	10	1
	300A	5A	2.5	5	3.75	5	10	1

Wiring schematic diagram:



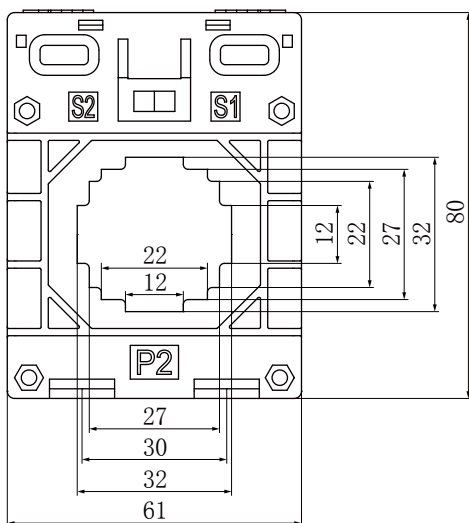
Current output type

Secondary doesn't allow open circuit

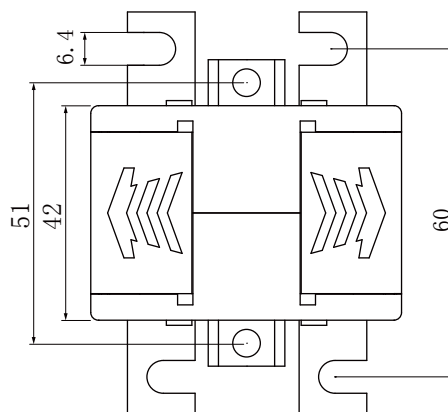


Outline size: (in:mm ± 0.5) :

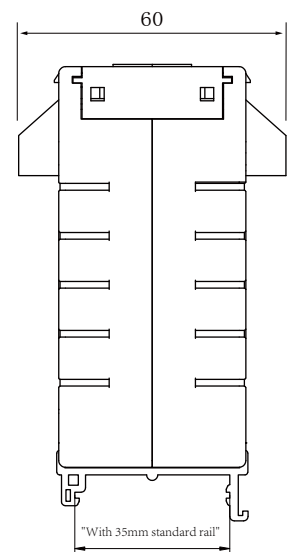
Wear heart 2 circle diagram



Front view



Bent lug size View



Installation diagram of clamp rail