

Sector150 HD

FPV Racing Drone

Manual



Contents

Product Specifications.....	1
Interface Description.....	2
Check the flight control drive.....	3
Calibration accelerometer.....	4
URAT serial port use.....	5
Select aircraft model.....	6
Choose ESC protocol.....	7
Voltage parameters setting.....	8
Setting up the receiver.....	9
Check receiver signal.....	10
Select flight mode startup mode.....	11
LED settings.....	12
Troubleshooting.....	13

.....

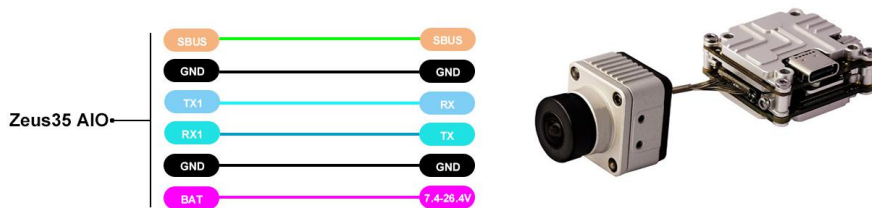
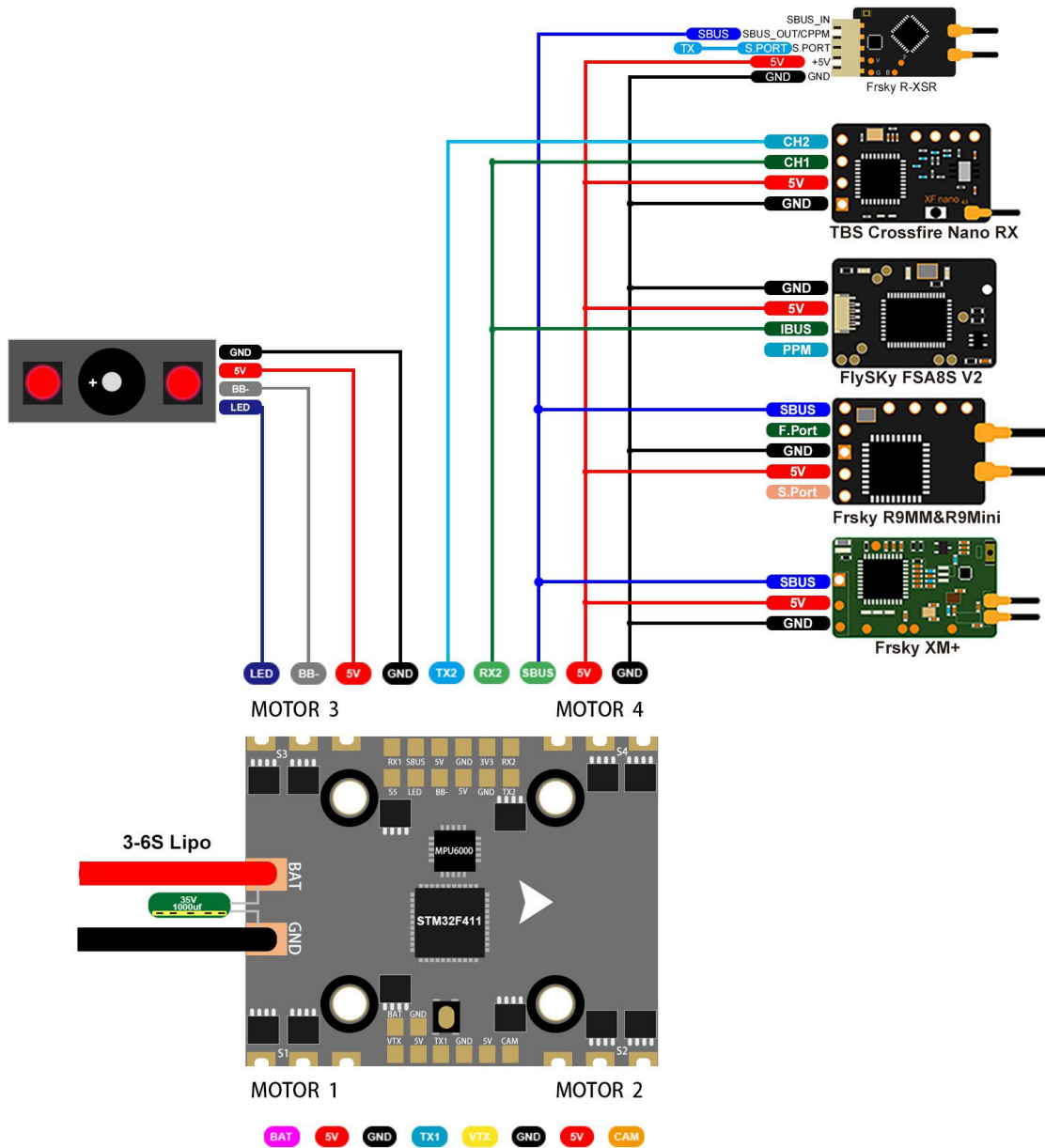
Package Included

Sector150 HD FPV Racing Drone *1	Accessory Bag*1
----------------------------------	-----------------

1.Product Specifications

Product parameters	
Model	Sector150 HD FPV Racing Drone
Weight	222.7g
Frame Kit	Sector150 Freestyle Frame Kit
Flight Controller	Zeus35 AIO Flight Controller
ESC	35A 4in1
VTX	CADDX VISTA
Motor	1408 kv3600 (4S) 1408 KV2400 (6S)
Support receiver	SBUS .DSMX.i.BUS
Input Voltage	3-4S Lipo

2. Interface Description



3. Check the flight control drive

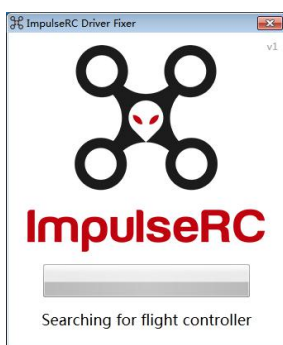
1. Long Press BOOT buttons.connect USB.The system automatically install the driver



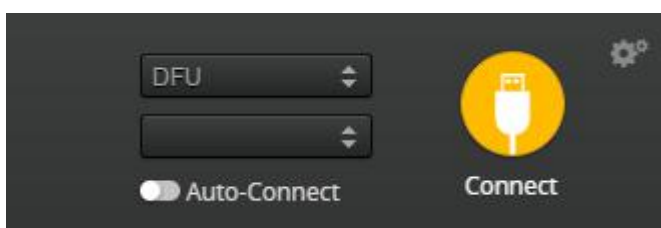
2.Driver cannot be installed, please download ImpulseRC_Driver_Fixer



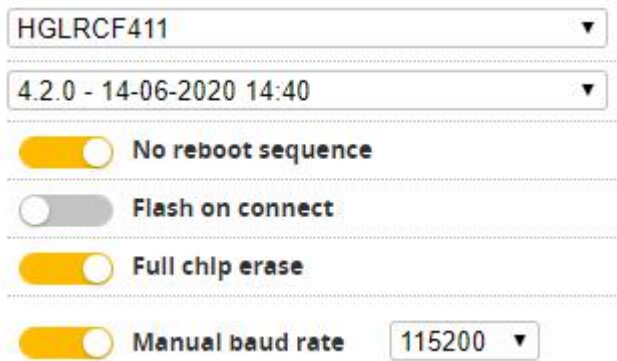
3.Double-click on the run(Plug in the flight controller to automatically install the driver)



4.open betafight configurator , enter DFU mode




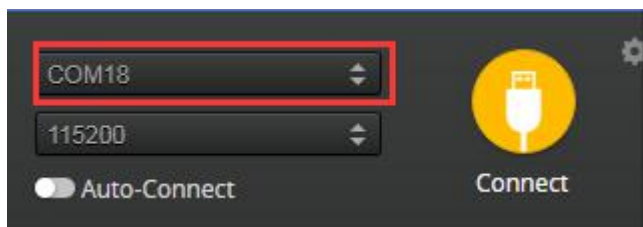
5. Click **Firmware Flasher** Select firmware version



6. Click **Load Firmware [Online]** Load firmware. **Flash Firmware** Waiting for completion **Erasing ...** It will be prompted upon

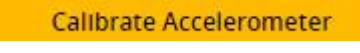
completion. **Programming: SUCCESSFUL**

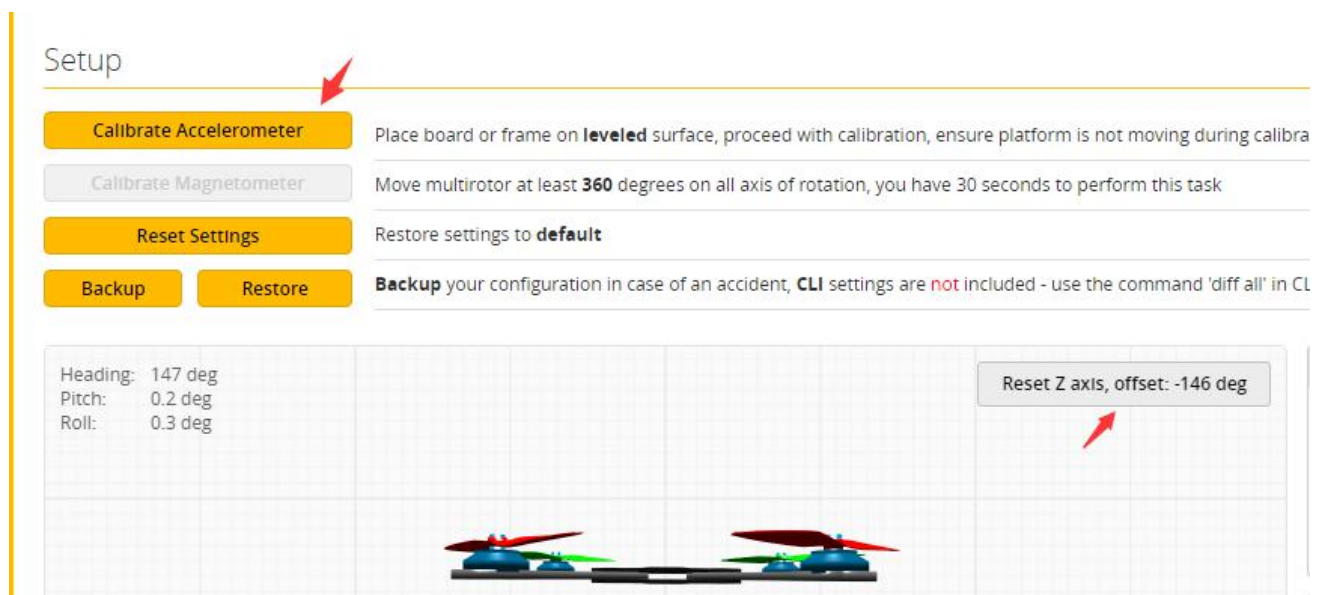
7. open betaflyght configurator  . Controller plugged into the computer. Betaflight Automatically assigned port, click “Connect”
Enter setup interface (Different computer COM)



4. Calibration accelerometer

1. Put the aircraft horizontal and click “Reset Z axis”

Click again 





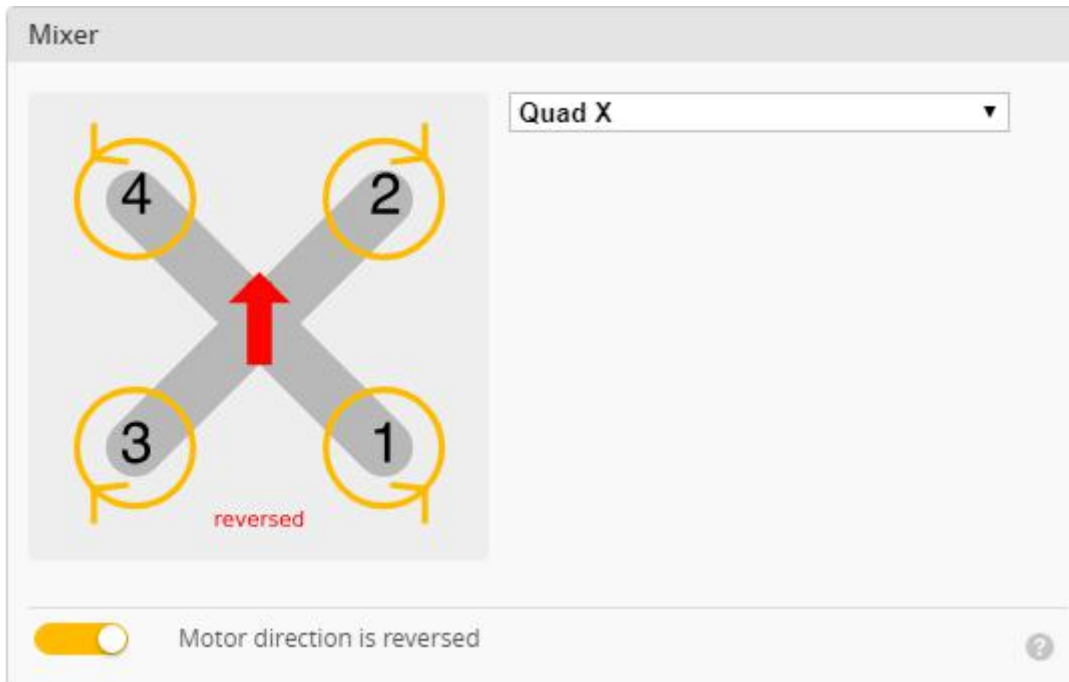
5. URAT serial port use


URAT1 uses VTX image transmission

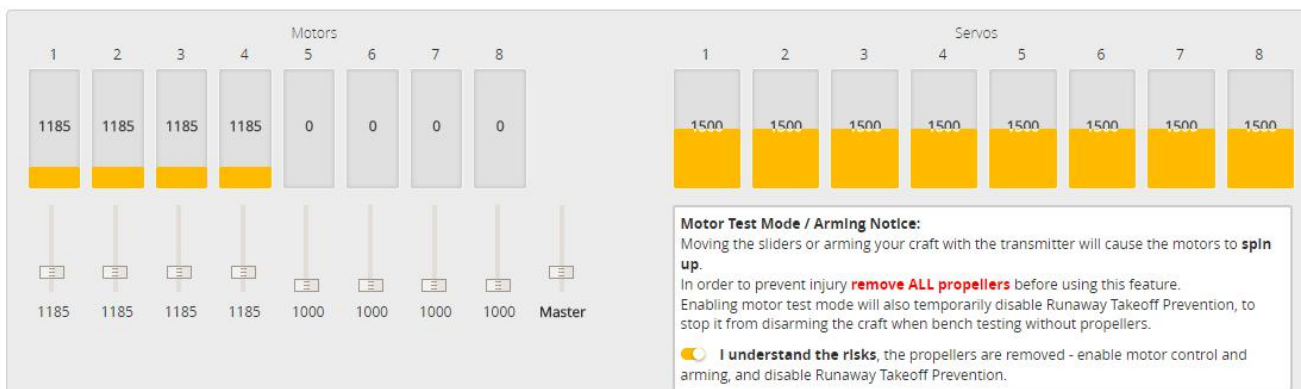
UART2 uses receiver telemetry

6. Select aircraft model

1. Click  Configuration  Select model

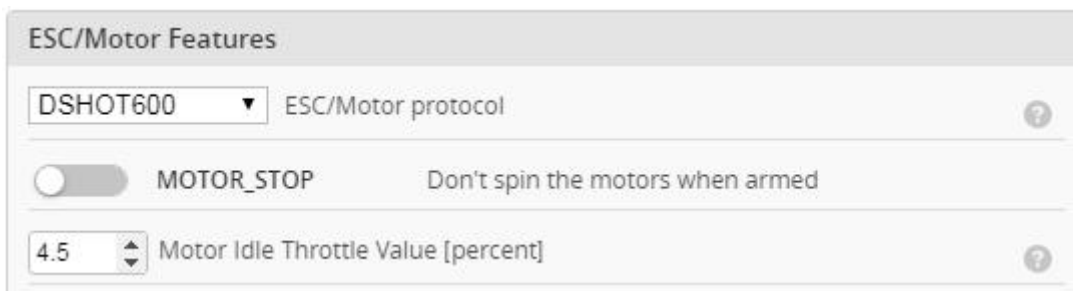


2. Click  Motors Click **“I understand the risks”** Push Master to check motor steering **“Master”** Steering can be changed at [BLHeliSuite](#)



7. Choose ESC protocol

1. Choose the right ESC protocol, the optional universal protocol DSHOT600.



ESC/Motor Features

DSHOT600 ESC/Motor protocol

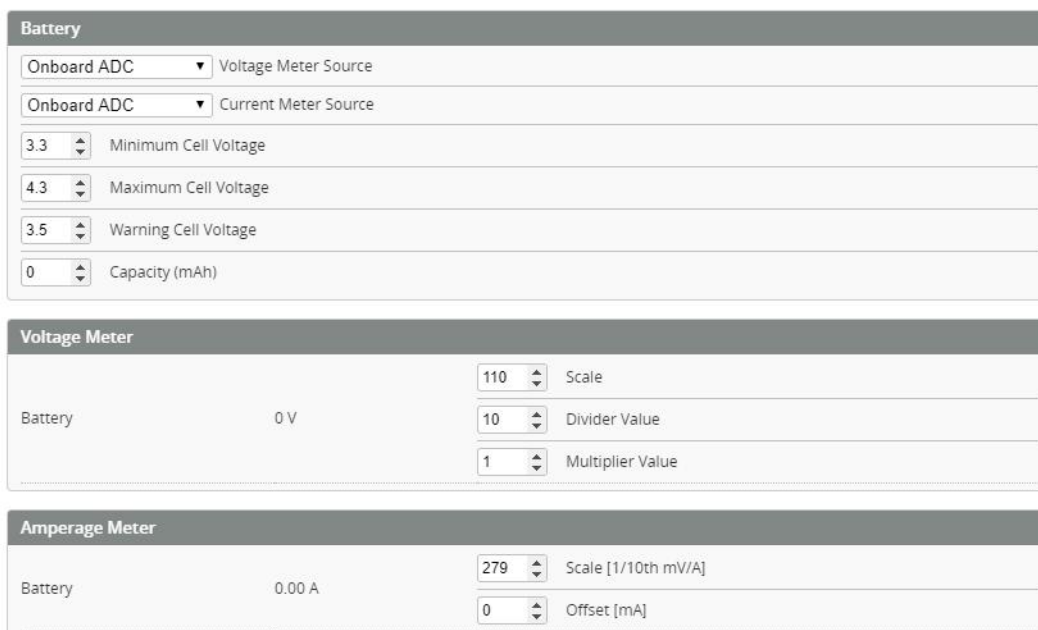
MOTOR_STOP Don't spin the motors when armed

4.5 Motor Idle Throttle Value [percent]

8. Voltage parameters setting

1. Click **Power & Battery** Setting parameters

Power & Battery



Battery

Onboard ADC Voltage Meter Source

Onboard ADC Current Meter Source

3.3 Minimum Cell Voltage

4.3 Maximum Cell Voltage

3.5 Warning Cell Voltage

0 Capacity (mAh)

Voltage Meter

Battery 0 V

110 Scale

10 Divider Value

1 Multiplier Value

Amperage Meter

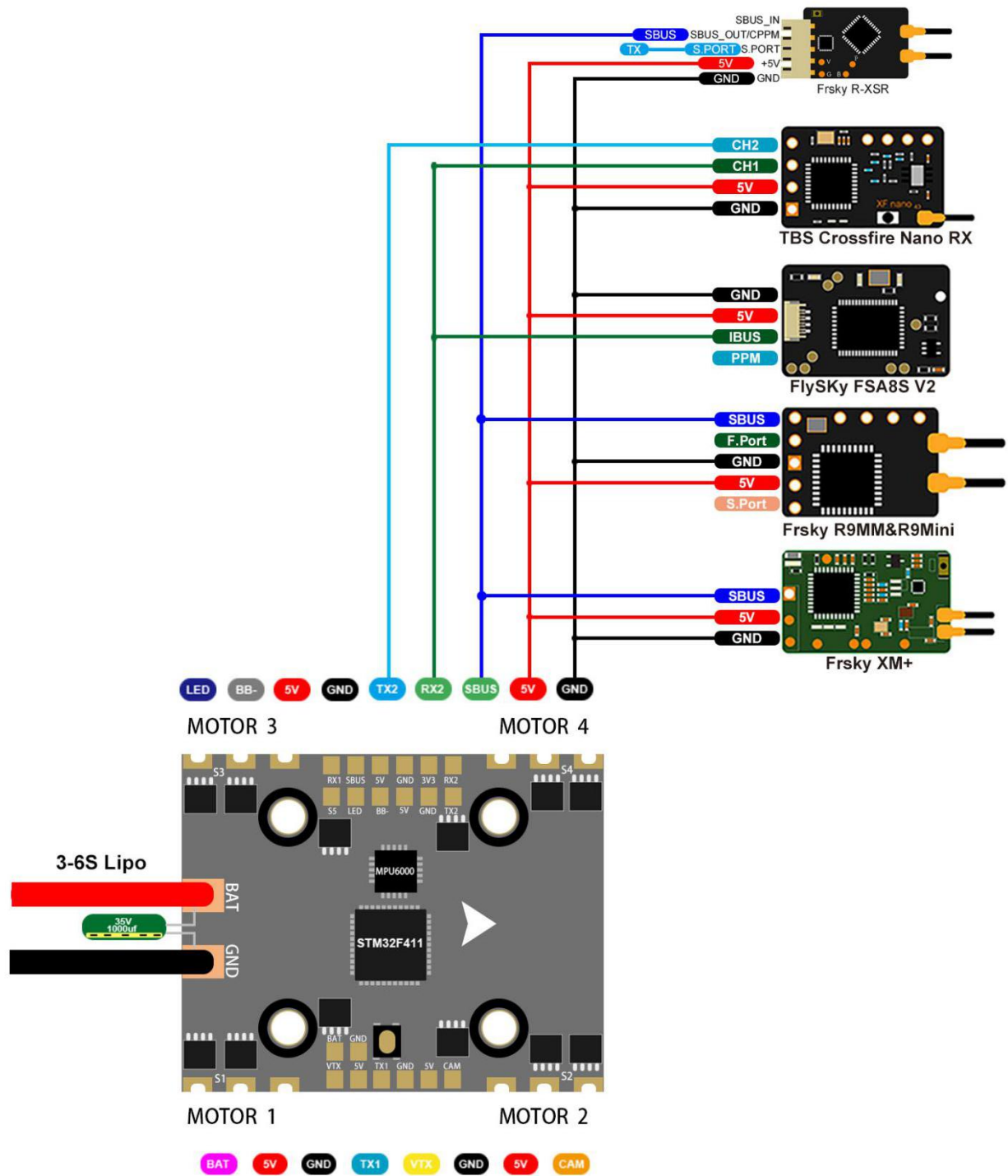
Battery 0.00 A

279 Scale [1/10th mV/A]

0 Offset [mA]

9. Setting up the receiver

1. Receiver connection diagram



2. Click **Ports**. We have found “**UART2**” Open (**SBUS**) the receiver serial port

Identifier	Configuration/MSP	Serial Rx	Telemetry Output	Sensor Input	Peripherals
USB VCP	<input checked="" type="checkbox"/> 115200 ▼	<input type="checkbox"/>	Disabled ▼ AUTO ▼	Disabled ▼ AUTO ▼	Disabled ▼ AUTO ▼
UART1	<input type="checkbox"/> 115200 ▼	<input type="checkbox"/>	Disabled ▼ AUTO ▼	Disabled ▼ AUTO ▼	VTX (IRC Tran ▼ AUTO ▼
UART2	<input type="checkbox"/> 115200 ▼	<input checked="" type="checkbox"/>	Disabled ▼ AUTO ▼	Disabled ▼ AUTO ▼	Disabled ▼ AUTO ▼

3. Open (**i.BUS/DSMX**) receiver serial port

Identifier	Configuration/MSP	Serial Rx	Telemetry Output	Sensor Input	Peripherals
USB VCP	<input checked="" type="checkbox"/> 115200 ▼	<input type="checkbox"/>	Disabled ▼ AUTO ▼	Disabled ▼ AUTO ▼	Disabled ▼ AUTO ▼
UART1	<input type="checkbox"/> 115200 ▼	<input type="checkbox"/>	Disabled ▼ AUTO ▼	Disabled ▼ AUTO ▼	VTX (IRC Tran ▼ AUTO ▼
UART2	<input type="checkbox"/> 115200 ▼	<input checked="" type="checkbox"/>	Disabled ▼ AUTO ▼	Disabled ▼ AUTO ▼	Disabled ▼ AUTO ▼

4. Set the **SBUS** receiver

Receiver

Serial-based receiver (SPEKSAT, 5 ▼) Receiver Mode

Note: Remember to configure a Serial Port (via Ports tab) and choose a Serial Receiver Provider when using RX_SERIAL feature.

SBUS ▼ Serial Receiver Provider

5. Set the **i.BUS** receiver

Receiver

Serial-based receiver (SPEKSAT, 5 ▼) Receiver Mode

Note: Remember to configure a Serial Port (via Ports tab) and choose a Serial Receiver Provider when using RX_SERIAL feature.

IBUS ▼ Serial Receiver Provider

6. Set the **DSMX** receiver

Receiver

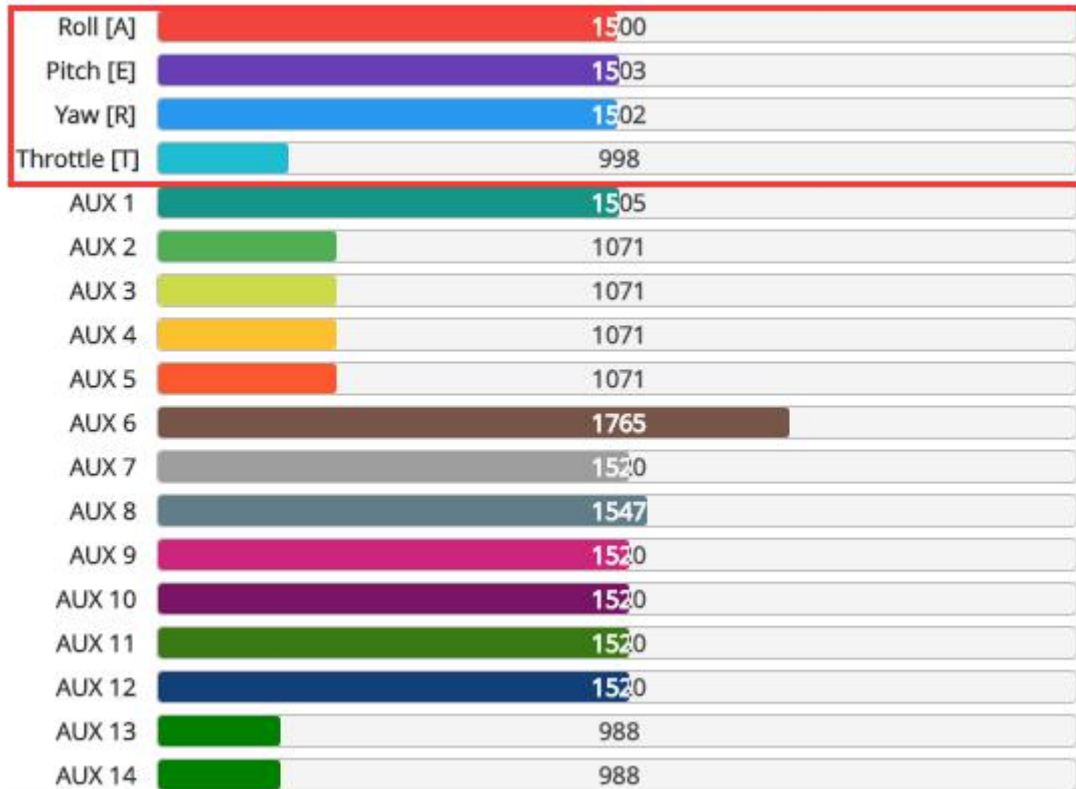
Serial-based receiver (SPEKSAT, 5 ▼) Receiver Mode

Note: Remember to configure a Serial Port (via Ports tab) and choose a Serial Receiver Provider when using RX_SERIAL feature.

SPEKTRUM2048 ▼ Serial Receiver Provider

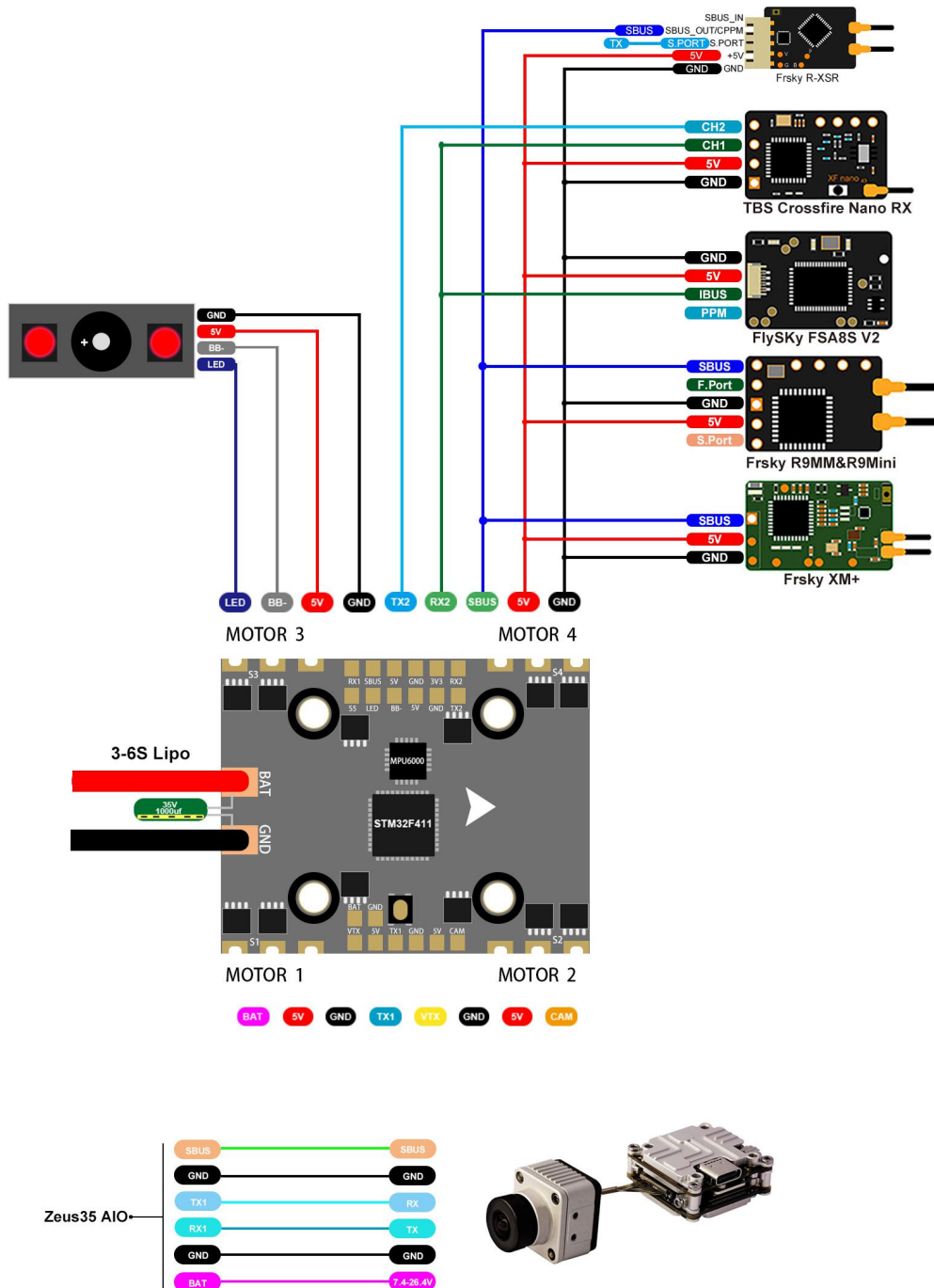
10. Check receiver signal

1. Click  Receiver Check the remote control output signal



11.VTX serial port use. VTX uses OSD smart audio


1.VTX connection diagram



2.VTX serial port opens. The protocol is selected according to its own VTX protocol.

Identifier	Configuration/MSP	Serial Rx	Telemetry Output	Sensor Input	Peripherals
USB VCP	<input checked="" type="checkbox"/> 115200 ▾	<input type="checkbox"/>	Disabled ▾ AUTO ▾	Disabled ▾ AUTO ▾	Disabled ▾ AUTO ▾
UART1	<input checked="" type="checkbox"/> 115200 ▾	<input type="checkbox"/>	Disabled ▾ AUTO ▾	Disabled ▾ AUTO ▾	Disabled ▾ AUTO ▾
UART2	<input type="checkbox"/> 115200 ▾	<input checked="" type="checkbox"/>	Disabled ▾ AUTO ▾	Disabled ▾ AUTO ▾	Disabled ▾ AUTO ▾

12.Select flight mode startup mode

1. Click  Modes set up the function of remote control switch across the channel (below are for reference only)

Modes WIKI

Use ranges to define the switches on your transmitter and corresponding mode assignments. A receiver channel that gives a reading between a range min/max will activate the mode. Remember to save your settings using the Save button.

Show/hide unused modes

ARM ✕

AUX 1 ▾

Min: 1300 Max: 2100

900 1000 1200 1400 1500 1600 1800 2000 2100


ANGLE ✕

AUX 1 ▾

Min: 1300 Max: 2100

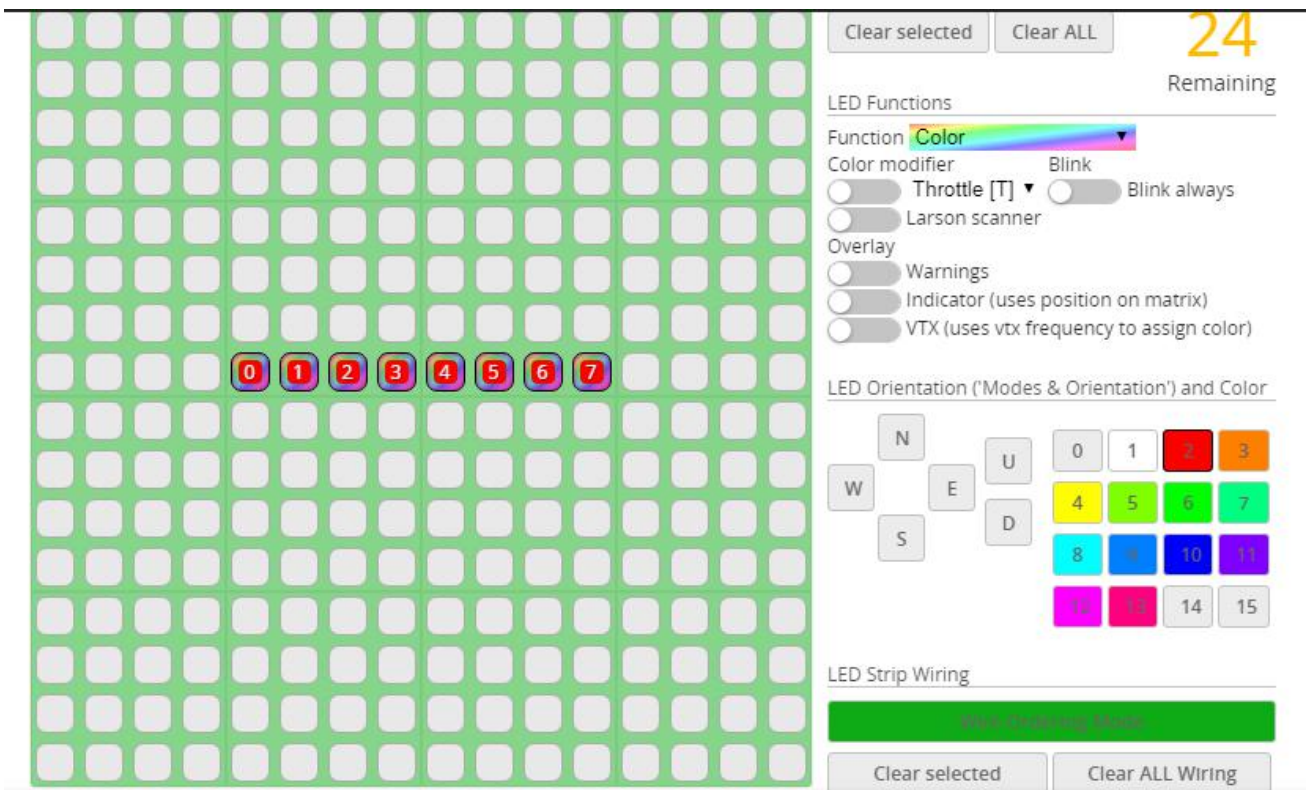
900 1000 1200 1400 1500 1600 1800 2000 2100

13.LED settings

1. Click  Configuration Turn on LED support



2. Click  LED Strip. Click  set according to need



14. Troubleshooting

Warning:

Please read the cautions as follows, otherwise stability of your flight controller cannot be ensured, your flight controller will even get damaged.

- Keep focus on the polarity. Check carefully before power supply.
- Cut off the power when you connect, plug and pull anything.
- The refresh rate of PID and Gyroscope is up to 8K/8K.

after sales question:

1. After receiving the goods, it is found that the product can not be used normally. If the return to the factory is a quality problem, the repair service will be provided free of charge.
2. If the product is damaged due to improper operation, the repair service may be provided under the condition that the inspection can be repaired.
3. For domestic customers, please contact the after-sales service personnel. For overseas customers, please contact the official website for after-sales service.

Product daily problems

1.OSD garbled:

If you find garbled characters, please open Betaflight, click "OSD" .and click "Font Manager" clicks on "Upload Font" to update

1. When plugged in the battery, the aircraft does not pass the self-test without "BBB" sound. There is only one sound.

Please check if the ESC agreement is correct

3.The spin of the aircraft keeps spinning

1. Please check if the propeller is correct
2. Please check if the motor direction is correct