
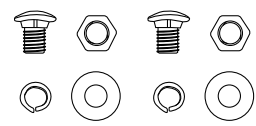
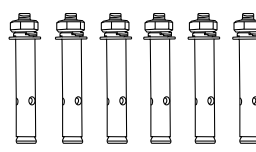
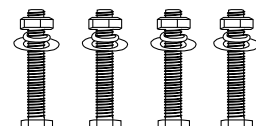
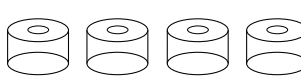


**TURBRO Wall Mount Bracket  
Installation Guide**

(Applicable Model: ACS-460)

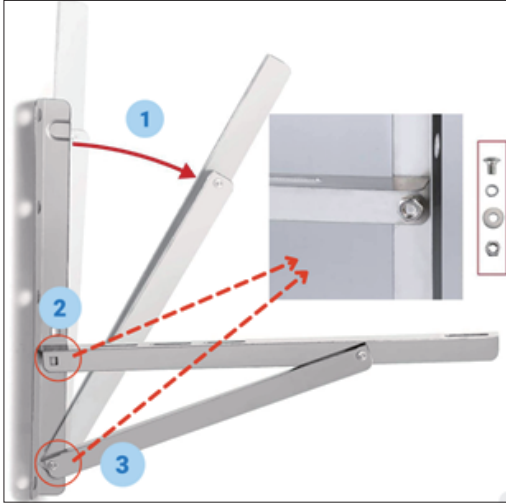
**Part List**

No.	Item	Part Name	Quantity
A		Foldable Bracket	2 pcs
B		Bracket Attachment Bolt Kit (M8*12MM)	2 Sets
C		Concrete Expansion Bolt (M8*80MM)	6 Sets
D		Condenser Attachment Bolt Kit	4 Sets
E		Rubber Vibration Absorbing Pad	4 Sets

1

**Installation Steps**

① Unfold the foldable brackets (A), and fix them with bracket attachment bolt kits (B).



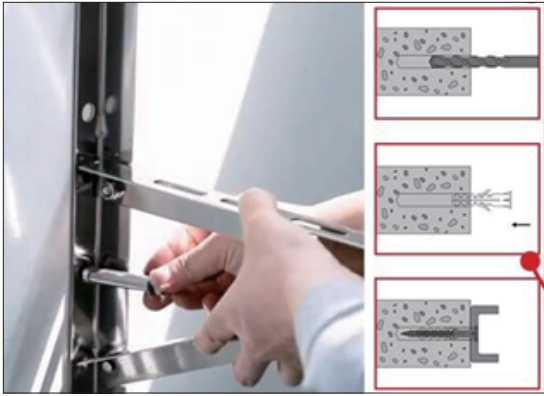
② Ensures the mounting surface is suitable for the foldable brackets (A). Mark the pre-drilled holes on the wall and drill the holes using the 1/2 inches driller.

(Double check bracket is level before any anchor drilling)

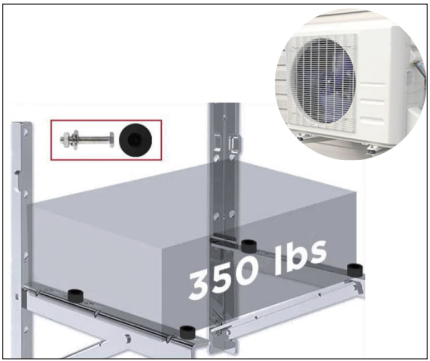


2

③ Insert the concrete expansion bolts (C) and mount the L-shaped foldable brackets (A) on the wall.



④ Adjust and put the rubber vibration absorbing pads (E) on the foldable brackets (A), then place your heat pump on it. Put the nuts of the condenser attachment bolt kits (D) on the foldable brackets (A), install and tighten the screws of the condenser attachment bolt kits (D) to settle the heat pump.



If you find any part missing or have any question about installation, please kindly contact us at [support@turbro.com](mailto:support@turbro.com)



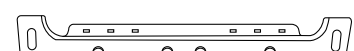

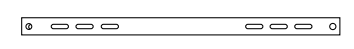
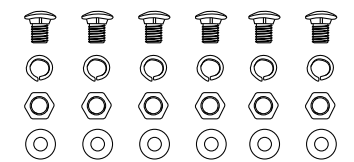
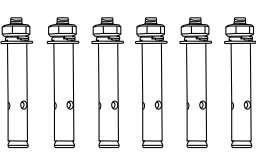
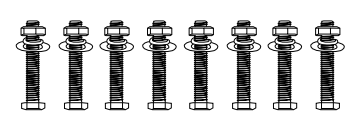
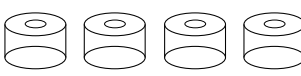
© Katmai Technology Limited  
[www.turbro.com](http://www.turbro.com)

3

**TURBRO Wall Mount Bracket  
Installation Guide**

(Applicable Model: ACS-740, ACS-740L)

**Part List**

No.	Item	Part Name	Quantity
A		U-shape Wall Bracket	2 pcs
B		Triangle Side Panel	2 pcs
C		Cross-bar	2 pcs
D		Bracket Attachment Bolt Kit	6 sets
E		Concrete Expansion Bolt (M8*80MM)	6 sets
F		Condenser Attachment Bolt Kit (M8*60MM)	8 sets
G		Rubber Vibration Absorbing Pad	4 pcs

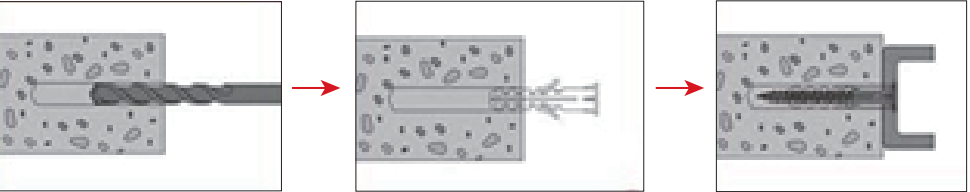
4

**Installation Steps**

① Ensures the mounting surface is suitable for brackets. Mark the pre-drilled holes on the wall and drill the holes using the 1/2 inches driller. (Double check bracket is level before any anchor drilling)



② Insert the concrete expansion bolts (E) and mount the U-shape wall-mounted brackets (A) on the wall.

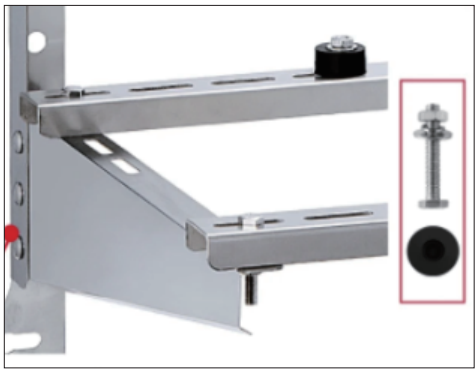


③ Connect the triangle side panels (B) to the U-shape wall-mounted brackets (A) via using the bolts of bracket attachment bolt kits (D).



5

④ Connect the cross bars (C) to the triangle side panels (B) and fix it by the bracket attachment bolt kits (D). Adjust the rubber vibration absorbing pads (G) and place your heat pump. Then put the nuts of condenser attachment bolt kits (F) on it, install the screws of condenser attachment bolt kits (F) to settle the heat pump.



**NOTE :**

- The ACS-460; ACS-740 brackets are not suitable for heat pumps with width (from back to front) longer than 15"; ACS-740L is not suitable for heat pumps with width (from back to front) longer than 18".
- Ensure that the wall bracket is mounted properly to handle applied loads as wall construction may vary.
- The wall bracket must be securely fixed to the wall with all screws fastened tightly.
- Do not make any modification to bracket assembly or fixings.
- Check that all screws and bolts are secured tightly before placing the unit on it.
- Bracket is designed for masonry wall mount. For stud wall mount, proper blocking must be made between studs to ensure proper wall bracing will accommodate bracket weight load.

If you find any part missing or have any question about installation, please kindly contact us at [support@turbro.com](mailto:support@turbro.com)



© Katmai Technology Limited  
[www.turbro.com](http://www.turbro.com)

6