



# Fosi Audio

## Fosi Audio TDA7498E User Manual



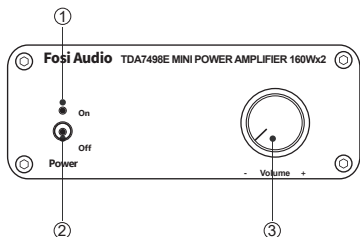
————— Thanks for choosing us! —————

# Product Specifications

Fosi Audio TDA7498E is a Hi-Fi stereo 2-channel amplifier that features 160W x 2 output, it is a mini power amp which is equipped with 24V Power Adapter. The Amp is perfectly suited for Home Passive Speakers, with more delicate and clear sound, allowing you to enter the world of music wholeheartedly.

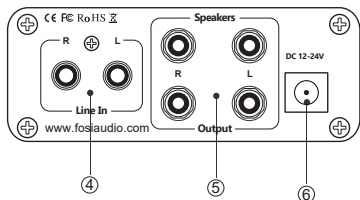
<b>Input Interface:</b>	RCA Input, 12V-24V DC Input
<b>Output:</b>	passive speaker
<b>Product Adapter Input Voltage Range:</b>	AC 110V - 240V
<b>DC Input Voltage:</b>	24V
<b>SNR:</b>	≥ 98dB
<b>THD:</b>	≤ 0.04%
<b>Max Power Output:</b>	160Watt x2
<b>Frequency Response Range:</b>	20Hz-20KHz(± 3db)
<b>Product Weight:</b>	1.88lb/0.85 kg
<b>Product Dimensions:</b>	5.1x3.93x1.37inch (13*10*3.5cm)

# Product Overview & Control Functions



## Front Panel

- ① Power Indicator Light
- ② Power Switch
- ③ Volume Control



## Back Panel

- ④ RCA Input
- ⑤ Speakers Output
- ⑥ DC Input

# Package Contents

Fosi Audio TDA7498E Amplifier\*1  
AC Power Cord\*1  
24V Power Supply\*1  
User Manual\*1

## Quick Setup

**Step 1:** Prepare TDA7498E, 24V power supply, passive speakers, speaker wires or banana plugs;

**Step 2:** Connect the TDA7498E to the passive speakers, you can connect the speaker's wire via the bare wire or banana plugs;

**Step 3:** Connect the 24V power supply to the DC Input;

**Step 4:** Toggle the power switch on the front panel upwards to turn on the TDA7498E amplifier.

**Note1:** Before connecting the power supply, please make sure that the TDA7498E is in the "OFF" position when connecting to the power adapter. Otherwise, there is a "POP" click sound from your speakers.

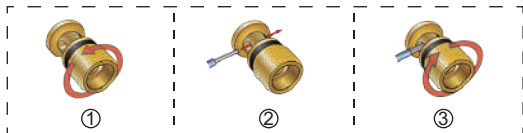
**Note2:** Before connecting the power supply, please turn down the volume control to 0 (always rotating counterclockwise) to avoid your hearing from damage.

### How to connect the speaker wire?

#### Method 1: Bare wire connection illustration

- ① : Release the horn terminals block terminals;
- ② : Insert the two ends of the speaker wire into the amplifier and speaker terminal holes;
- ③ : Tighten the horn terminals;

**Note:** Please make sure that the speakers' wire are not attached with each other, the speaker connection area is very narrow, it is easy to cause the positive and negative speakers' wires to contact each other, which will result in no sound output.



### Method 2: Banana plugs connection illustration

- ①: Release the banana jacket;
- ②: Loosen the screw;
- ③: Insertion speaker wire and tighten the screw;
- ④: Tighten the banana jacket;
- ⑤: Insert the banana plug into the horn terminals of the speaker and amplifier.

**Note:** Please make sure that the speakers' wire are not attached with each other, the speaker connection area is very narrow, it is easy to cause the positive and negative speakers' wires to contact each other, which will result in no sound output.



# Troubleshooting/QA

## 1: Power Supply Indicator is not illuminated.

- Check to see that the AC power cord is securely connected to the power supply and to an AC power outlet.
- Check that the AC power outlet is supplying power, make sure the power LED on the power supply stay on.
- If you make sure the power supply is defective, please contact us for exchange.

## 2: What type of speakers work best with TEA7498E Amplifier?

- Fosi Audio TDA7498E works great with any 2-8Ω passive speakers.

**Note:** please know that the TDA7498E amplifier is for passive speakers, not for powered speakers and subwoofer.

## 3: Why does the TDA7498E make serious noise when used together with a radio?

- Common feature of Class D power amplifiers is that they can cause serious noise when used with a radio, so we do not recommend using the TDA7498E with a radio or too close to it.

## 4: Can I connect a turntable to TDA7498E amp, why is the volume is extremely low?

- You can try our BOX X1, BOX X2 or BOX X3 phono preamp.

## 5: Why does the sound is cracking or make a lot of electric noise?

- When you hand attached with the volume knob or the amplifier case, will cause some buzzing sound, it's normal because the amplifier case and volume knob are made of aluminum. It's normal, once your hand move from the amplifier,







the buzzing sound will disappear.

- Please make sure all the cables completely pushed into the devices, incompletely connection will cause this cracking.
- Please remove all the inputs then check whether cracking noise disappear or not, the cracking maybe from the audio source or input cables.
- If you are not using the original factory standard power supply, please replace the power supply before testing. Many power supply in the market have large interference coefficient, which will cause a lot of current sound.

#### **6: Can I use headphone with this product?**

- No, the TDA7498E can not be connected to headphones and only supports passive speakers. If you want to connect to headphone, you can choose our N2, PH04(4 CH).

#### **7: Why there is no voice from my amplifier?**

- Recheck speaker wire connections from the amplifier to each speaker.
- Verify that the amplifier and your source components are turned on.
- Please check that the AC wall outlet is on and working.
- Please check that the cable from the power supply is connected to the amp and the power supply indicator is on.
- Please check that the volume/power knob on the front panel is turned on and not set to the minimum volume.
- Please check that your audio source(iPad, computer, etc.) are turned on and not set to the minimum volume, please change the audio source if you can.
- Please check that the cables from your audio sources are working and are properly connected.
- Please be sure the Power LED on the amp is on when you switch it on.

### **8: How much power does this use in standby mode? Can this amp be left on all the time?**

- This is the class D amplifier, it will cost very low power when it is in standby mode. It can be connected all the time and it is safe without power consumption.

### **9: Sound quality is not good?**

- Decrease the volume of the input audio source and increase the volume of the amplifier.
- Please make sure your speakers are passive speakers, not active speakers.
- Please unplug the RCA input, connect this amp to your speakers, then connect it to the power supply, switch on and volume up, to hear whether noise or hum remain, if yes, the issue may from the amplifier or your speakers, if not, the issue may from your RCA cable or audio source, please change the audio source and audio cable to try again.
- Please make sure all the cables are completely pushed into the device, incompletely connections will create distortion.
- Please make sure the TDA7498E has enough power to drive your speakers, check the specs of your speakers, and if you need more power, you can use a more powerful power supply, such as 24V 8A, 24V 10A.

### **10: Should I unplug the power cord?**

- If the item will not be used for a long time, please unplug the power plug to prevent the item from being burnt due to lightning strike.

### **11: Can I bridge channel 1 and channel 2 to get 320watts?**

- NO, this amplifier can't be bridged.

## **12: How can I connect TDA7498E to TV?**

- Because the TDA7498E has an RCA input, it can be connected to a TV.

## **13: Why the sound cut in and cut out?**

- Try to reduce the sound of the sound source.
- Try to change the audio source to test.
- Ensure that the positive and negative poles of the speaker output do not touch together. Some relatively large banana plugs are easy to touch together and cause a short circuit.

## **14: Can I take the TDA7498E to other countries?**

- Yes, the wide voltage AC 110-240V for power input can be used in any country. You only need to match the power cord adapter of the corresponding country.

## **15: The TDA7498E has only one channel with sound?**

- Recheck all speaker wire connections on the speakers and the amplifier.
- Check that the cables from your audio sources to the amplifier are properly connected.
- Please swap the RCA input, right and left channel, if the opposite channel can't work, the issue may be from your audio source or RCA cable.

**Note:** If that channel still can't work, the issue may from your speakers or this amplifier. Please contact us if this amp has this issue.

- Please exchange the speakers' wire from the amplifier speakers' output, if the issue remains, the issue may from the speaker or the speakers' wire, if the issue follows, the issue may from the amplifier.

- If you are using a computer connected to the amplifier, make sure the volume is up on your media player, internet radio, master control, device volume, etc., and that the balance control is centered.

### **16: Low Volume.**






- Recheck the volume on your audio source and this amplifier is turned up and not set to minimum volume.
- Please make sure your audio source needs a pre-amp or not.
- If you are using the turntable, please make sure that if your turntable needs a phono preamp or not, some turntable built-in phono preamp, some are not.

### **17: Can I exchange the power supply that comes with the amplifier and to get more power?**

- The TDA7498E comes with a 24V 4.5A power supply, it's enough for most bookshelf speakers, but if you want to get more power, you can exchange the power supply, the voltage range is DC12-24V, you can use 24V 8A or 24V 10A power supply.

**Any problems please leave a message to the customer support email address: [support@fosiaudio.com](mailto:support@fosiaudio.com)**

# Comparison Section

Model	BT20A	DA-2120C	BT30D	TB10A	TDA7498E
Picture					
Type	2.0CH Amp	2.1 CH Amp + DAC	2.1CH Amp	2.0CH Amp	2.0CH Amp
Bluetooth Version	Bluetooth 5.0	Bluetooth 5.0	Bluetooth 5.0	-	-
Input	Bluetooth + RCA	Bluetooth + RCA + USB + Optical + Coaxial	Bluetooth + RCA	RCA	RCA
Output	Passive Speakers	Passive Speakers+ Active Subwoofer	Passive (Speakers+ Subwoofer) + Powered Subwoofer	Passive Speakers	Passive Speakers
Power Adapter	24V/4.5A	32V/5A	24V/4.5A	19V/4.74A	24V/4.5A
MAX Power Output	100 watt X2	120watt X2	50 watt X2 + 100 watt	50 watt X2	160 watt X2

# Warranty Information

- All Fosi Audio products have an 18-month limited warranty on parts and labor from the date of purchase. Please contact us if you have any problems.

## About Fosi Audio

- Fosi Audio designs and builds innovative audio products with all your music in mind. Great sound, simple but elegant designs, high-quality materials, and truly useful features are what Fosi Audio is about. We sincerely hope you get as much enjoyment from our products as we've had to create them!

**Our website:** [www.fosiaudio.com](http://www.fosiaudio.com)

**Amazon store:** [www.amazon.com/fosiaudio](http://www.amazon.com/fosiaudio)

**Our Youtube channel:** Fosi Audio

**Our Facebook page:** Fosi Audio

### After-sale Service and Technical Support Email:

[support@fosiaudio.com](mailto:support@fosiaudio.com)

[customer@fosiaudioshop.com](mailto:customer@fosiaudioshop.com)

