



Fosi Audio

Fosi Audio K5 User Manual



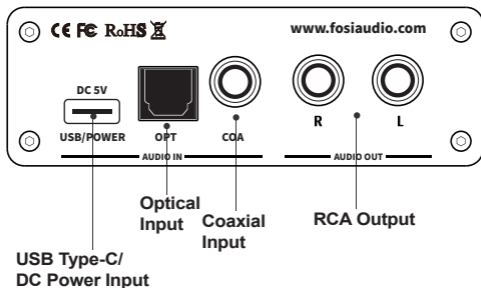
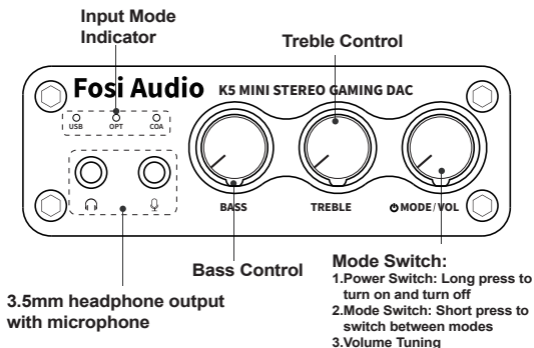
Thanks for choosing us!

Product Specifications

The K5 is a mini stereo gaming DAC headphone amplifier with microphone, supporting USB Type-C, optical and coaxial digital inputs, 3.5mm headphone jack, and RCA outputs, suitable for most home audio systems. With treble and bass control, it can be used as a preamplifier or volume control for PC/Mac. Fosi Audio K5 DAC ensures exquisite musicality, accurate and realistic phasing, and reproduction of the original sound!

Input Type:	USB Type-C, Optical, Coaxial, Microphone
Output Type:	3.5mm Headphone, RCA
USB Sampling Rate:	24Bit/96kHz
Optical/Coaxial Sampling Rate:	24Bit/192kHz
Headphone Impedance:	16-300Ω
RCA Output Level:	2V
Power Supply:	5V
Power Input Interface:	USB Type-C
THD:	≤0.001%
SNR:	≥110dB
Size (L*W*H):	4.4*3.7*1.2inch (112*95*30mm)
Net Weight:	0.55lb/251g

Product Overview & Control Functions

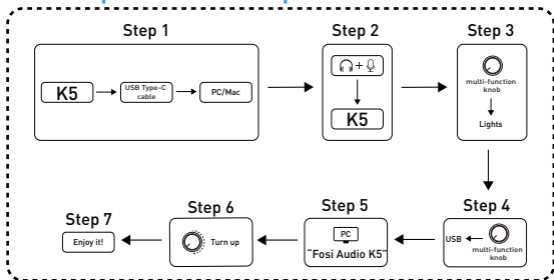


Package Contents

- Fosi Audio K5 Mini Stereo Gaming DAC ×1
- USB Type-C Cable ×1
- Headset Microphone Two-in-one Adapter Cable ×1
- User's Manual ×1

Quick Setup

USB Input for example



USB input to K5 to a headphone or powered speakers

Prepare: K5, PC, USB Type-C cable, the Headset Microphone Two-in-one Adapter cable, headphones, or powered speakers.

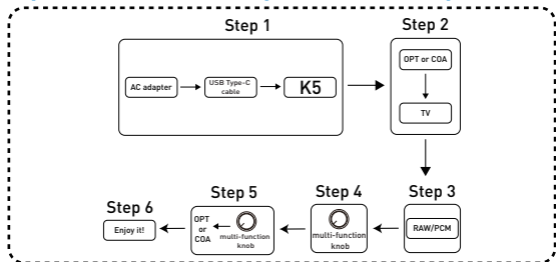
Step 1: Connect the K5 to the PC via a USB Type-C cable;

Step 2: Connect the headphone to the K5 by the Headset Microphone Two-in-one Adapter cable or connect the powered speakers to K5 by the RCA output;

NOTE: If your headphone hasn't microphone or you don't need to say anything, you don't need the Two-in-one Adapter cable to connect, you can connect the headphone directly.

- Step 3:** Long press the multi-function knob till the Input Mode Indicator lights up to turn on K5;
- Step 4:** Short press the multi-function knob to select USB input mode, the USB input mode light will stay on blue;
- Step 5:** Left click the sound icon on your PC and change the sound output device to “Fosi Audio K5”;
- Step 6:** Turn up the volume;
- Step 7:** Play the music on your PC and enjoy!
- NOTE 1:** Please turn down the volume to the minimum before powering on the K5;
- NOTE 2:** The volume control knob combines the power switch and mode switch. You can long-press to turn on and turn off, short press to switch between modes;
- NOTE 3:** The mode selection can be memorized when you switch off the device.
- NOTE 4:** The K5 can't connect the passive speakers directly. If you want to connect passive speakers, you need to connect an amplifier first, and then connect the passive speakers.

Optical/Coaxial Input for example





Optical/Coaxial input to K5

NOTE: In optical and coaxial input mode, the K5 does not support microphone.

Prepare: K5, AC adapter, USB Type-C cable, device with optical output (TV for example), optical cable or coaxial cable (not included in the package).

Step 1: Connect the USB Type-C cable to the AC adapter(or any other DC 5V phone charger or computer USB connector), then connect the USB Type-C cable to the K5;

Step 2: Connect the TV to K5's optical port via the optical cable; (Connect the TV to K5's coaxial port via the coaxial cable;)

Step 3: Set the TV's optical output sound type to RAW/PCM;

Step 4: Long press the multi-function knob to switch on K5;

Step 5: Short press the multi-function knob to select OPT or COA input mode;

Step 6: Turn up the volume and enjoy!

NOTE: Some devices' default sound output is of Dolby or DTS type, which K5 DOES NOT support. Please remember to select RAW/PCM sound type on your device, otherwise, you will hear a lot of noise or no sound output.

Troubleshooting/QA

1: No sound from the microphone.

- Please make sure all cables are well connected.
- Please make sure your headphone support the microphone, some headphone does not support the microphone. PC default path: Setting-Microphone-Allow accessing to your microphone
- Please make sure the Record on your PC sound settings is set to "Fosi Audio K5". PC default path: Sound settings-Record-Choose "Fosi Audio K5".

- Please make sure the K5 is in USB input mode. In optical and coaxial input mode, the K5 does not support microphone.
- Please make sure the microphone permission has been turned on on the audio source device
- Replace another Headset Microphone Two-in-one Adapter Cable to have a try.

2: How do I power on the K5 Mini stereo DAC?

- Besides the USB Type-C cable included in the package, you'll also need a 5V power adapter with USB output, such as your cell phone's charger or power bank.

Note: When you plug the USB Type-C cable into the K5 and see the input Mode Indicator is lighting up, which means the connection is up. Please do not intend to insert the cable to K5's USB/POWER port fully which can cause damage.

3: Why do I get endless white noise?

- Please check if the input mode selection is correct.
- The K5 supports 3.5mm headphone output and RCA sound output simultaneously. You can check if the headphone output is normal or not when you find the RCA output has no sound.
- Please try to replace the RCA cable and test again.

4: Why do I get endless white noise?

- Please check that your input device is using Dolby/DTS audio, If so, please change it to RAW/PCM type and try again.

5: No Dolby/DTS audio and I still get noise through the USB input?

- Please try to connect the USB Type-C cable to the other USB ports on your PC. Some USB ports may have unstable data transmission so please try to swap it;

- Please try again on another computer;
- Please replace the USB Type-C cable and retest;

6: The K5 is not recognized on Windows?

- Select Start, then type device manager in the Search box, and then select Device Manager;
- Click Start menu, then type device manager in the Search box and then select Device Manager;
- Expand Universal Serial Bus controllers. Press and hold (or right-click) a device and select Uninstall. Repeat for each device;
- Once complete, restart your computer. Your USB controllers will automatically install.
- If Windows update causes the device to be unrecognized, please update all windows components and reboot and retest. Please contact us if the problem still insists.

7: How to do plug-and-play on Windows?

- Just click the sound icon in your notification area;
- Click the “Select playback device” option;
- Select the playback device “Fosi Audio K5”..

8: I can't play Spotify music in Plug-and-Play mode?

- Please exit the Spotify app and switch the playback device to the computer's own sound card device, open Spotify and play, confirm that it works, and then switch the playback device to DAC-K5 “Fosi Audio K5”

9: How do I get the highest 24Bit/96kHz resolution on my PC?

- Right-click the PC sound icon in the right bottom notification area, open Volume Mixer, click the icon of the device/SPDIF: “Fosi Audio K5” to open the Properties, click the Advanced, select

24Bit/96kHz for maximum sound quality output.

10: Why do I get an intermittent sound via the USB connection?

- Please try to connect the USB Type-C cable to the other USB ports on your PC. Some USB ports may have unstable data transmission. Normally speaking it's better to use the USB port on the rear panel of the computer console;
- Please replace the USB Type-C cable and retest. Contact us if the problem still insists.

11: Why cuts the sound in or out?






- Try to reduce the sound of your device.
- Try to exchange your audio source and cables test, if still so then there are problems with the K5.

12: Why does my device stop working after a short time of use?

- Make sure your audio source and the headphones, amplifier, or active speakers you connect are working well. And please check over all the connections of the input and output cables. Then you can try to change the audio input source, output devices, and cables to test again. Also please check if the power supply works or not.

For any problems please leave a message to the customer support email address: support@fosiaudio.com

Comparison Section

Model	Q4	K1	K2	K4	K5
Picture					
Bluetooth Version	-	Bluetooth 5.0	Bluetooth 5.0	-	-
Headphone Output Impedance	16-200 (Ω)	16-300 (Ω)	16-300 (Ω)	16-300 (Ω)	16-300 (Ω)
Input	USB+Optical+ Coaxial	Bluetooth 5.0+ PC-USB+ Optical+ Coaxial	Bluetooth 5.0+ PC-USB+ Optical+ Coaxial	USB Type-C+ Optical+ Coaxial	USB Type-C+ Optical+ Coaxial+ Microphone
Output	3.5mm Headphone+ RCA	3.5mm Headphone+ RCA	3.5mm Headphone+ RCA	3.5mm Headphone+ RCA	3.5mm Headphone+ RCA
Treble & Bass Control	Yes	No	Yes	Yes	Yes

Warranty Information

- All Fosi Audio products have an 18-month limited warranty on parts and labor from the date of purchase. Please contact us if you have any problems.

About Fosi Audio

- Fosi Audio designs and builds innovative audio products with all your music in mind. Great sound, simple but elegant designs, high-quality materials, and truly useful features are what Fosi Audio is about. We sincerely hope you get as much enjoyment from our products as we've had to create them!

Our website: www.fosiaudio.com

Amazon store: www.amazon.com/fosiaudio

Our Youtube channel: Fosi Audio

Our Facebook page: Fosi Audio

After-sale Service and Technical Support Email:

support@fosiaudio.com

customer@fosiaudio.com

