



# Fosi Audio

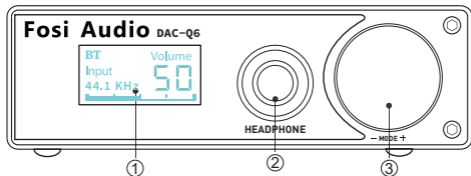
## Fosi Audio DAC-Q6 User Manual



Before using this product, please be sure to read carefully this instruction manual and keep it safe for further reference

Thank you very much for choosing our products! Please read this manual carefully before using the product.

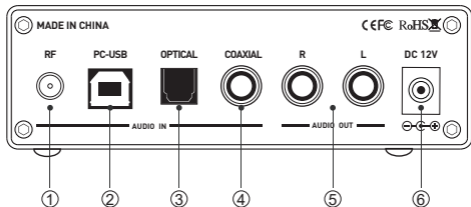
## Front-end interface function description



- ① Display
- ② 3.5mm headphone output jack
- ③ ON/OFF/input mode selection key VOL+/- (short press switch, again short press select input channel, long press switch it off, increase clockwise and decrease counterclockwise)

---

## back interface function specification



- ① Bluetooth antenna interface
- ② PC-USB input jack
- ③ Optical input jack
- ④ COAXIAL INPUT
- ⑤ ANALOG RCA output jack
- ⑥ POWER (DC power can't beyond 12V)

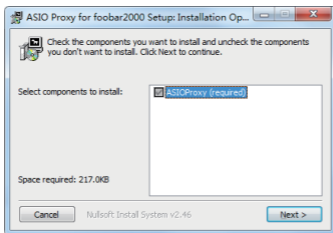
# Operation steps:

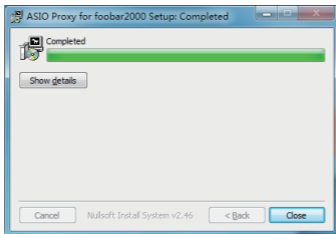
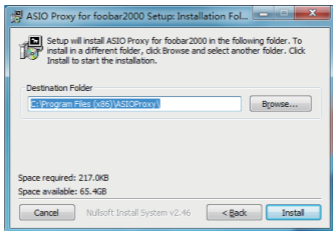
1. Make sure the VOL turns to the minimum.
2. Connect the external back-end equipment to the output interface of sound source.
3. Connect the sound source that needs to be used.
4. To select bluetooth mode, you need to switch the input channel to bluetooth mode for pairing connection.
5. Connect to power.
6. short press switch, again short press select input channel, long press switch it off.
7. signal (coaxial/optional/pc-usb/bluetooth).
8. Turn the VOL button clockwise to select the desired volume.
9. The RCA analog output will automatically disconnect when connected to the headset output, such as the headset.
10. After use, press and hold for 3 seconds to shut down.

# PC driver installation method

## 1. ASIO Driver installation:

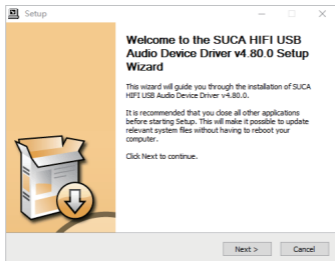
Double click on the ASIOProxyInstall-0.6.5, Then follow the prompts to install.

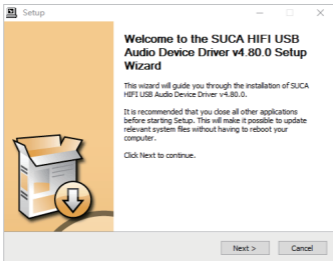
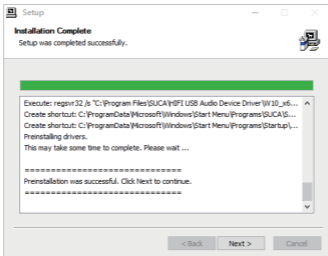
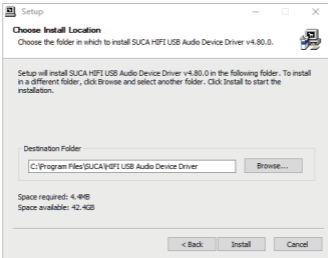




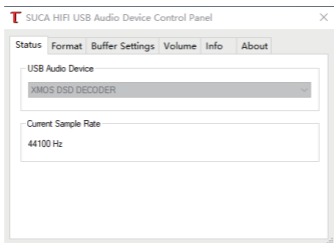
## 2. The sycon driver installation:

Double click on the `SUCA_UsbAudio_v4.80.0_2019-12-09_setup`, Then follow the prompts to install.





After installation, open the driver and the following dialog box appears.

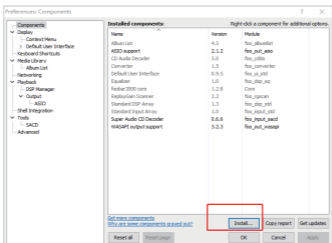


### 3.Foobar The installation:

folder Foobar It is free of installation, Double click open foobar2000

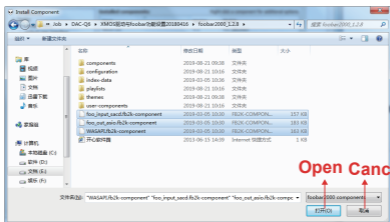
avcodec-fb2k-54.dll	2013-06-14 17:44	应用程序扩展	1,562 KB
avutil-fb2k-52.dll	2013-06-14 17:44	应用程序扩展	194 KB
foo_input_sacd.fb2k-component	2019-03-05 10:30	FB2K-COMPON...	157 KB
foo_out_asio.fb2k-component	2019-03-05 10:30	FB2K-COMPON...	183 KB
foobar2000	2013-06-14 17:44	应用程序	1,757 KB
installer	2013-06-14 23:45	配置设置	1 KB
portable_mode_enabled	2013-06-14 23:45	文件	0 KB
Querv Syntax Help	2008-12-17 04:19	HTML 文档	14 KB

After open the foobar200, click Top left File, choose Prefereces, Click Components, Click again Install.

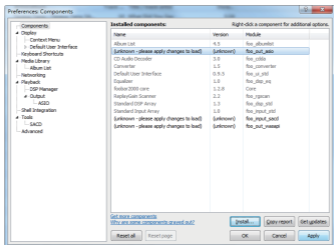




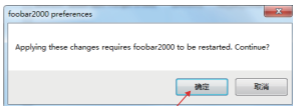
## Select the following three files, Click again open



At the same time selected `foo_input_sacd.fb2k-component`, `foo_out_asio.fb2k-component`, `WASAPI.fb2k-component` Click open after three files.



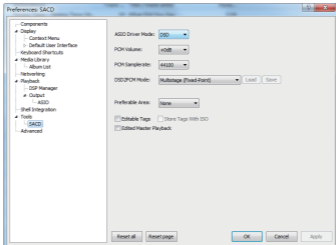
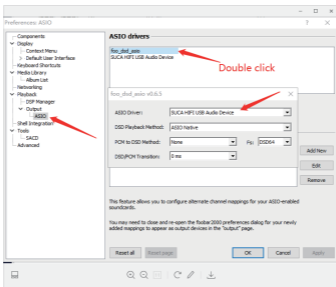
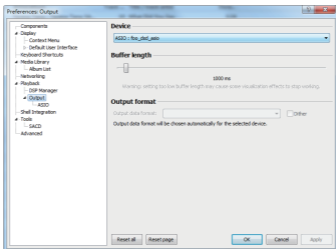
Click Apply



Click OK

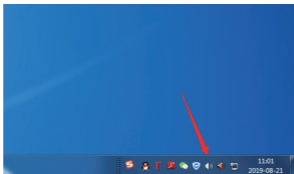


Open foobar2000, Click Library choose Configurer Click again output.



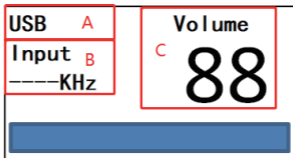
# PC-USB Operation Instructinos:

1. Connect the PC-USB interface of the rear surface of the machine with factory provided USB cable (USB can support hot plug).
2. Press the input signal selection switch to select USB input.
3. The following photo shows the icon with horn symbol in the lower right corner of PC.



4. Right click to pop up the dialog box and click <choose play device>.
5. Select the playback device recognized by PC in the pop-up dialog box(XMOS...).
6. Click to confirm the identified digital output.

## OLED Show:



- A.....Input channel display area, display separately according to selection USB/BT/ Coaxial /Optical
- B.....Input sampling rate display area, no signal displayed
- C.....Volume display area, Volume 0-99
- D.....The bottom is the volume progress bar

# With bluetooth version

## Specification:

PC-USB Input Sampling Frequency	PCM 384K/32Bit DSD256
Coaxial Input Sampling Frequency	PCM 384K/32Bit
Optical Input Sampling Frequency	192K/24Bit
PC-USB System Supported	W7/W8/W10/MAC/linux
Headphone Maxpower Output	1000mW 32Ω load
Headphone Matching Impedance	16-600Ω
Working Voltage	DC12V
RCA Output Voltage	2V
Bluetooth Core	5.0
Bluetooth Support	APT-X HD APT-X LL
Frequency Range	10Hz-40kHz(±0.5dB)
THD	0.001%
SNR	≥112dB
Product Dimension	≥112dB
Product Weight	0.52kg
Package Dimension	L300*W230*H70mm

# Frequently Asked Questions:

## 1: All the cables are connected, but no sound output?

- Check whether the display screen is bright or not. If the display screen is still not bright after starting up, you can find an output of the same voltage (must be 12V) in the test to determine the machine failure or power failure. If the display screen is bright, check whether the corresponding input signal is correctly selected.
- If the indicator light is on, check whether the VOL knob is in the minimum position. If so, turn clockwise to normal Volume
- If both of the above are normal, check the input device if it is paused, mute, or the volume is minimized

## 2: Why does the sound is cracking ?

- This product is for the DAC decoder, but also can be used as preamp, If post equipment is max volume & preamp too, it's easy to distortion, you just need to turn down the volume of the equipment, then ok.

## 3: Why do loudspeakers make a lot of electric noise?

- if you are not using the original factory standard power supply, please replace the power supply before testing. Many power supply in the market have large interference coefficient, which will cause a lot of current sound.

## 4: Why the speaker has drone when I just plug in the input cable but don't connect the sound sources?

- If you use unshielded signal lines, there will be interference signals entering the power amplifier. If you hate the sound, you are advised to use the shielded signal lines or unplug the signal lines.

### **5: Can the 6.35mm headphone output port connect to the microphone?**

- no, the headphone interface is the signal output interface, not the input interface.

### **6: Why does the volume of the machine stay the same, while the sound of different audio sources (such as CDS and mobile phones) is different?**

- The output range of different types of audio source devices is different, the mobile phone is usually 0.35mV, and the CD is 1V. The signal output amplitude of the sound source will directly influence the volume.

### **7: Why there is no sound when PC-USB connects to PC?**

- First press the PC-USB operation to confirm whether the digital playback output has been selected. If still no sound, you can restart the computer and repeat the operation again.

### **8: Why is it that all my wires are plugged in, but the RCA analog output is silent?**

- At this point, you should check to see if the headphone output is plugged into the headphone or headphone adapter. If so, you should unplug the headset or headphone converter to simulate RCA output.

### **9: Why can't I find the bluetooth pairing name**

- the machine is designed to be energy efficient and environmental friendly. To use bluetooth, you must switch to bluetooth input mode to search for pairing.

### **10: Why not support DSD files and the sound is salsa?**

- playing DSD file does not support PC tuning volume, only the default maximum volume.

### **11: Does a driver need to be installed on a MAC?**

- no, the MAC system is driveless and can be used directly.

### **12: I used to have a load driver. Do I need to uninstall it before I install it?**

- yes, be sure to install the original driver after unloading.

## **Warning:**

1. Please do not open the shell without permission. Improper operation may cause the danger of electric shock.
2. Please use the power supply of the regular manufacturer, otherwise it will damage the machine.
3. Please do not use the machine in a high temperature and humidity environment.