



Fosi Audio

Fosi Audio DA-2120D User Manual



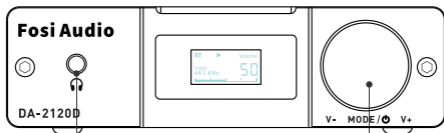
Thanks for choosing us!

Product Specifications

Fosi Audio DA-2120D is a Bluetooth 5.0 audio amplifier for passive speakers that features a stereo 100 watt x2 power output. DA-2120D is a 2.1 channel power DAC amplifier which is equipped with Bluetooth, PC-USB, coaxial, optical, and 3.5mm aux input. A remote control to switch volume, bass and modes.

THD:	≤ 0.001%
SNR:	≥ 90dB
Bluetooth:	V5.0
Bluetooth Name:	“Fosi Audio DA2120D”
Power Supply:	24V/4.5A
Working Voltage:	12V - 24V
Max Power Output:	100W + 100W @4Ω
Terminating Impedance:	4-8Ω
Frequency Range:	15Hz - 25kHz
Bluetooth Transmission Distance:	Up to 50ft
Remote Control Distance:	Up to 20ft
Input Mode:	Bluetooth/3.5mm AUX/ PC-USB/Optical/Coaxial
Output Mode:	Passive speakers/ Active speaker/ Active subwoofer/ Headphone output
PC-USB Input Sampling Frequency:	24Bit/192kHz
Optical/Coaxial Input Sampling Frequency:	24Bit/192kHz
System Supported:	XP/W7/W8/W10/MAC/Linux
Size:	1.09lb/4.72*5.31*1.37inch

Product Overview & Control Functions



3.5MM Headphone Output

LED Display

Multi-function Knob:
Power switch/Switch modes/
volume adjustment

Bluetooth

Antenna Interface

Optical Input

Preamplifier Output to
active speaker/subwoofer



Bluetooth
Antenna



3.5MM
AUX Input

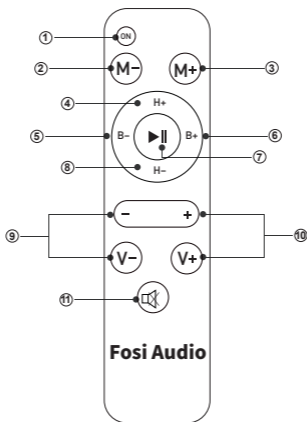
PC-USB
Input

Coaxial
Input

Output to
passive speakers

DC 12V-24V
Input

Remote Control



Number	Function
1	ON: Standby mode
2	M-: Back to the previous mode
3	M+: Next mode
4	H+: Treble up
5	B-: Bass down
6	B+: Bass up
7	Play/Pause
8	H-: Treble down
9	V-/ -: Volume down
10	V+/:+ : Volume up
11	Mut on/off

Package Contents

Fosi Audio DA-2120D Amplifier*1
Remote Control*1
Bluetooth Antenna*1
Optical Cable*1
PC-USB Cable*1
3.5mm to RCA Cable*1
DC 24V Power Supply*1
User Manual*1

Quick Setup

Preparation

- Prepare 1: DA-2120D, 24V power supply, passive speakers or active speaker/subwoofer or headphone, speaker wires or banana plugs;
- Prepare 2: Connect the DA-2120D to the passive speakers via the speaker wire or banana plugs;
- Prepare 3: Connect the 24V power supply to the DC input;
- Prepare 4: Long press the Multi-function Knob to turn on the DA-2120D amplifier.

How to connect the speaker wire?

Method 2: Banana plugs connection illustration

- ① : Release the banana jacket;
- ② : Loosen the screw;
- ③ : Insertion speaker wire and tighten the screw;
- ④ : Tighten the banana jacket;
- ⑤ : Insert the banana plug into the horn terminals of the speaker and amplifier.

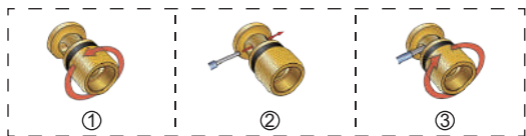
Note: Please make sure that the speakers' wire are not attached with each other, the speaker connection area is very narrow, it is easy to cause the positive and negative speakers' wires to contact each other, which will result in no sound output.



Method 1: Bare wire connection illustration

- ①: Release the horn terminals block terminals;
- ②: Insert the two ends of the speaker wire into the amplifier and speaker terminal holes;
- ③: Tighten the horn terminals.

Note: Please make sure that the speakers' wire are not attached with each other, the speaker connection area is very narrow, it is easy to cause the positive and negative speakers' wires to contact each other, which will result in



Bluetooth Input Mode for example

Prepare: Bluetooth device (Phone for example)

Step 1: Short Press the Multi-function Knob to select to Bluetooth mode, "BT" display is flashing;

Step 2: Turn on the Bluetooth on your phone and search for "Fosi Audio DA2120D" to connect, after Bluetooth connection, "BT" display is no longer flashing and not visible, On the LED display will stay on.

Step 3: Open the audio application, play and enjoy!

PC-USB Input Mode for example

Prepare: PC, PC-USB cable.

Step 1: Connect the PC to DA-2120D's USB interface via the PC-USB cable;

Step 2: Short press the Multi-function Knob to select to USB mode;

Step 3: Click the sound icon in your PC's notification area; click the "Select playback device" option; select the playback device - SPDIF "USB AUDIO" or "Fosi Audio DA2120D";

Step 4: Open the audio application, play and enjoy!

Optical Input Mode for example

Prepare: optical device (TV for example), optical cable.

Step 1: Connect the TV to DA-2120D's optical interface via the optical cable;

Step 2: Short press the Multi-function Knob to select to optical mode;

Step 3: Set the TV's optical output sound to RAW/PCM.

Note: Due to different TV types, some TVs default Dolby or DTS sound output, DA-2120D does not support Dolby and DTS sound, please select RAW/PCM sound, otherwise you will hear a lot of noise or no sound output.

Step 4: Open the audio application, play and enjoy!

Coaxial Input Mode for example

Prepare: Coaxial device (TV for example), Coaxial cable (no include).

Step 1: Connect the TV to DA-2120D's coaxial interface via the coaxial cable;

Step 2: Short press the Multi-function Knob to select to optical mode;

Step 3: Set the TV's coaxial output sound to RAW/PCM.

Note: Due to different TV types, some TVs default Dolby or DTS sound output, DA-2120D does not support Dolby and DTS sound, please select RAW/PCM sound,



otherwise you will hear a lot of noise or no sound output.

Step 4: Open the audio application, play and enjoy!

3.5MM Input Mode for example

Prepare: AUX device (phone for example), 3.5mm to 3.5mm male cable (Package not include).

Step 1: Connect the phone to DA-2120D's AUX interface via the 3.5mm to 3.5mm male cable;

Step 2: Short press the Multi-function Knob to select to AUX mode;

Step 3: Open the audio application, play and enjoy!

Troubleshooting/QA

1: Why do I feel that the amplifier is underpowered and the sound is very small?

- DA-2120D amplifier has hardware volume adjustment and software volume adjustment. Please make sure that the volume of the amplifier and remote control is adjusted to the maximum, and the volume of the audio source is adjusted to the maximum.

2: Why do I get loud hiss noise coming from the TV via optical input?

- Please turn off Dolby/DTS audio on your TV or TV App, DA-2120D does not support Dolby/DTS audio input, please select RAW/PCM sound.

3: Can the DA-2120D be powered by batteries?

- Yes, but it is not recommended. The amplifier may be damaged when the battery power is unstable.

4: Why does the sound is cracking or make a lot of electric noise?

- When you hand attached with the volume knob or the amplifier case will cause some buzzing sound, it's normal because the amplifier case and volume knob are made of aluminum, once your hand move from the amplifier, the buzzing sound will disappear.
- Please make sure all the cables completely pushed into the devices, incompletely connection will cause this cracking.
- Please remove all the inputs then check whether cracking noise disappear or not, the cracking maybe from the audio source or input cables.
- If you are not using the original factory standard power supply, please replace the power supply before testing. Many power supply in the market have large interference coefficient, which will cause a lot of current sound.

5: My Bluetooth device can't pair with DA-2120D?

- Make sure that DA-2120D Bluetooth mode is on and "BT" display is flashing;
- Make sure that DA-2120D is not paired with other devices.
- Make sure that the distance between your device and DA-2120D is not too long, put your device close to the DA-2120D to have a try.
- Make sure there are no obstacles between your device and DA-2120D, obstacles will affect the Bluetooth operation distance.
- Please try to change another Bluetooth audio source to test.
- Replug power supply and restart the DA-2120D and then try to connect again, try to use another brand of mobile phone.

6: No Dolby/DTS audio and I still get noise through the USB input?

- Please switch the USB port to USB 3.0 or back USB port and try again, as some USB ports have unstable data transmission;
- Please try again with another computer;

- Please replace the PC-USB cable and retest, contact me for compensation if the original cable is faulty;
- Please change the power supply adaptation and retest, why? Because of the aging of the power supply, there may be an abnormal power supply resulting in white noise. I recommend using the 12V-24V to power it.

7: Sound quality is not good?

- Please change to another input source.
- Decrease the volume of the input audio source and increase the volume of the amplifier.
- Please make sure your SPK OUT connects to passive speakers, the PRE-OUT connects to the active speaker/subwoofer.
- Please adjust the treble and bass tone function to adjust the sound quality.
- Please make sure the DA-2120D has enough power to drive your speakers, check the specs of your speakers.

8: Why there is no voice from my amplifier?

- Recheck speaker wire connections from the amplifier to each speaker.
- Verify that the amplifier and your source components are turned on.
- Please check that the AC wall outlet is on and working.
- Please check that the cable from the power supply is connected to the amp and the power supply indicator is on.
- Please check that the volume/power knob on the front panel is turned on and not set to the minimum volume.
- Please check that your audio source(iPad, computer, etc.) are turned on and not set to the minimum volume, please change the audio source if you can.
- Please check that the cables from your audio sources are working and are properly connected.

- Please be sure the Power LED on the amp is on when you switch it on.

9: One channel does not work?

- Please make sure there is no short circuit in the speaker wire and no short circuit in the positive and negative terminals.
- Please test whether the Bluetooth/3.5MM AUX/PC-USB/Optical/Coaxial input have the same problem first.

If the five modes have the same problem, swap the speaker cables of the left and right channels, If only 3.5mm AUX mode does not work, change the audio source, change the cable and test again, and make sure that all the cables are completely pushed into the device.

10: Can I leave the DA-2120D power on all the time? Does is it safe?

- Sure, the DA-2120D is a class D amplifier, will cost very low power when nothing playing through it, and it's safe and you can leave it on all the time.

11: Can I exchange the power supply that comes with the amplifier and to get more power?

- The DA-2120D comes with a 24V 4.5A power supply, it's enough for most bookshelf speakers, but if you want to get more power, you can exchange the power supply, the voltage range is DC12-24V, and you can use a 24V 6A power supply or more.

12: Why do I get an intermittent sound on USB input mode?

- Please switch the USB cable to USB 3.0 port or back USB port and try again, as some USB ports have unstable data transmission;

- Please replace the PC-USB cable and replug the power supply to restart the amplifier, contact Fosi Audio customer support for compensation if the original cable is faulty.

13: Does this device allow two-way Bluetooth? (receive Bluetooth source, transmit to Bluetooth output like headphones?)

- NO. The DA-2120D only supports accepting Bluetooth signals.

14: Can I use a subwoofer with this product?





- Yes, the DA2120D can connect the active subwoofer. (via PRE-OUT)

15: Can I use active speaker/subwoofer and passive speakers at the same time?

- Yes, the PRE-OUT connects to the active speaker/subwoofer and the SPK-OUT connects to passive speakers.

Any problems please leave a message to the customer support email address: support@fosiaudio.com.

Comparison Section

Model	DA2120A	DA2120B	DA2120C	DA2120D
Picture				
Type	2.1 CH	2.0 CH	2.1 CH	2.1 CH
Bluetooth 5.0	√	√	√	√
Input	Bluetooth + USB + Optical + Coaxial + 3.5mm AUX	Bluetooth + USB + Optical + Coaxial + 3.5mm AUX + USB flash disk	Bluetooth + USB + Optical + Coaxial + RCA	Bluetooth + USB + optical + coaxial + 3.5mm AUX
Output	Passive Speakers + Subwoofer	Passive speakers	Passive Speakers + Active Subwoofer	Passive Speakers + Active Speaker /Subwoofer
Power Adapter	24V 4.5A	24V 4.5A	32V 4.5A	24V 4.5A
MAX Power Output	50watt x2	100watt x2	120watt x2	100watt x2

Warranty Information

- All Fosi Audio products have an 18-month limited warranty on parts and labor from the date of purchase. Please contact us if you have any problems.

About Fosi Audio

- Fosi Audio designs and builds innovative audio products with all your music in mind. Great sound, simple but elegant designs, high-quality materials, and truly useful features are what Fosi Audio is about. We sincerely hope you get as much enjoyment from our products as we've had to create them!

Our website: www.fosiaudio.com

Amazon store: www.amazon.com/fosiaudio

Our Youtube channel: Fosi Audio

Our Facebook page: Fosi Audio

After-sale Service and Technical Support Email:

support@fosiaudio.com

customer@fosiaudio.com



