



Fosi Audio

Fosi Audio DA-2120B User Manual



Thanks for choosing us!

Product Specifications

Fosi Audio DA-2120B is a ultra mini Bluetooth 5.0 audio amplifier for passive speakers that features stereo 100 watt x2, 2 channel power amp which is equipped with integrated Bluetooth, USB, coaxial, optical, 3.5mm aux and USB flash disk inputs, with a remote control to switch volume, bass, treble and modes to enjoy hi-res music!

THD:	≤ 0.001%
SNR:	≥ 92dB
Bluetooth:	V5.0
Bluetooth Name:	DA-2120B
Power Supply:	24V 4.5A
Working Voltage:	12V - 24V
Max Power Output:	100W + 100W @4Ω
Terminating Impedance:	2-8Ω (Recommended 4Ω)
Frequency Range:	15Hz - 20kHz
Bluetooth Transmission Distance:	Up to 50ft
Remote Control Distance:	Up to 20ft
Input Mode:	Bluetooth + USB + coaxial + optical + 3.5mm aux + USB flash disk
Output Mode:	Passive Speakers
USB Input Sampling Frequency:	16Bit/48kHz
Optical/Coaxial Input Sampling Frequency:	32Bit/192kHz
Maximum USB flash drive storage:	32GB

System Supported:

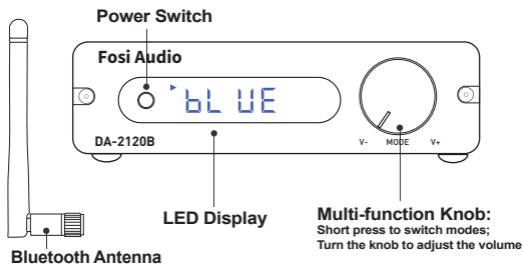
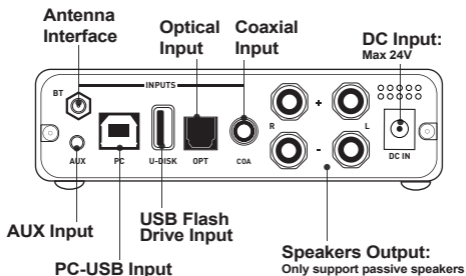
XP/W7/W8/W10/MAC/Linux

Size:

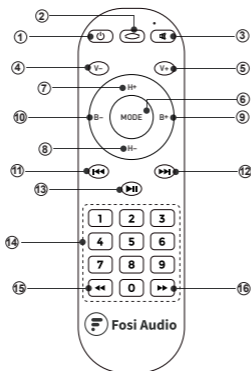
L140*W110*H34mm

(5.5*4.3*1.3inch)

Product Overview & Control Functions



Remote Control



Number	Function
1	Power on/off
2	Play mode: single cycle--- ONE all loop--- ALL file loop--- FLL random play--- rAn Note: It can only be used in USB flash
3	Mute on/off
4	Software volume down (Note: For hardware sound, please adjust the volume knob of the device.)
5	Software volume
6	Treble up

7	Treble down
8	Bass down
9	Bass up
10	Input mode select
11	Previous song
12	Next song
13	Play/Pause
14	Number keys: Allows direct access to specific songs
15	Rewinds song
16	Fast forwards song

Package Contents

Fosi Audio DA-2120B *1
Remote Control *1
Optical Cable *1
PC-USB Cable *1
3.5mm to RCA Cable *1
Bluetooth Antenna *1
DC 24V Power Supply *1
User Manual *1
Banana Plugs *8

Quick Setup

Preparation

- Prepare 1: DA-2120B, 24V power supply, passive speakers, speaker wires, and banana plugs;
- Prepare 2: Connect the DA-2120B to the passive speakers via the speaker wire or banana plugs;
- Prepare 3: Connect the 24V power supply to the DC input;
- Prepare 4: Short press the Power Switch to turn on the DA-2120B amplifier.

How to connect the speaker wire?

Method 1: Banana plugs connection illustration

- ①: Release the banana jacket;
- ②: Loosen the screw;
- ③: Insertion speaker wire and tighten the screw;
- ④: Tighten the banana jacket;
- ⑤: Insert the banana plug into the horn terminals of the speaker and amplifier.

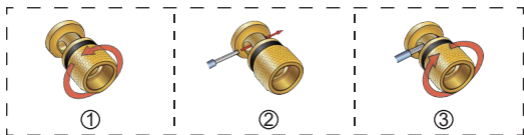
Note: Please make sure that the speakers' wire are not attached with each other, the speaker connection area is very narrow, it is easy to cause the positive and negative speakers' wires to contact each other, which will result in no sound output.



Method 2: Bare wire connection illustration

- ①: Release the horn terminals block terminals;
- ②: Insert the two ends of the speaker wire into the amplifier and speaker terminal holes;
- ③: Tighten the horn terminals;

Note: Please make sure that the speakers' wire are not attached with each other, the speaker connection area is very narrow, it is easy to cause the positive and negative speakers' wires to contact each other, which will result in no sound output.



Bluetooth for example

Prepare: Bluetooth device (Phone for example)

Step 1: Press the Multi-function Knob to select to Bluetooth mode, “BLU” display is flashing;

Step 2: Turn on the Bluetooth on your phone and search for: “DA-2120B”, connect to the DA-2120B, after Bluetooth connection, “BLU” display is no longer flashing and not visible, “▶” will stay on.

Step 3: Open the audio application, play and enjoy!

PC-USB for example

Prepare: PC, PC-USB cable.

Step 1: Connect the PC to DA-2120B’s USB interface via the PC-USB cable;

Step 2: Press the Multi-function Knob to select to USB mode;

Step 3: Click the sound icon in your PC’s notification area; click the “Select playback device” option; select the playback device - SPDIF “USB AUDIO” or “Fosi Audio DA2120B”;

Step 4: Open the audio application, play and enjoy!

Note: In USB mode, please do not insert the USB flash drive, some USB flash drive and USB input is not compatible, resulting in no sound output, or amplifier restart. Please unplug the USB flash drive and try again.

Optical for example

Prepare: optical device (TV for example), optical cable.



Step 1: Connect the TV to DA-2120B's optical interface via the optical cable;

Step 2: Press the Multi-function Knob to select to optical mode;

Step 3: Set the TV's optical output sound to RAW/PCM.

Note: Due to different TV types, some TVs default Dolby or DTS sound output, DA-2120B does not support Dolby and DTS sound, please select RAW/PCM sound, otherwise you will hear a lot of noise or no sound output.

Step 4: Open the audio application, play and enjoy!

Coaxial for example

Prepare: Coaxial device (TV for example), Coaxial cable (no include).

Step 1: Connect the TV to DA-2120B's coaxial interface via the coaxial cable;

Step 2: Press the Multi-function Knob to select to coaxial mode;

Step 3: Set the TV's coaxial output sound to RAW/PCM.

Note: Due to different TV types, some TVs default Dolby or DTS sound output, DA-2120B does not support Dolby and DTS sound, please select RAW/PCM sound, otherwise you will hear a lot of noise or no sound output.

Step 4: Open the audio application, play and enjoy!

AUX for example

Prepare: AUX device (Fosi Audio Phono Preamp BOX X1 for example), 3.5mm to RCA cable.

Step 1: Connect the Fosi Audio BOX X1 to DA-2120B's AUX interface via the 3.5mm to RCA cable;

Step 2: Press the Multi-function Knob to select to AUX mode;

Step 3: Connect the phono and turn it on, play and enjoy!

USB flash drive for example

Prepare: Max 32GB USB flash drive (audio files included: supports MP3/WMA/APE/FLAC/WAV audio formats)

Step 1: Insert the USB flash drive into the U-disk connector of the DA-2120B;

Step 2: Press the Multi-function Knob to select to USB flash drive mode;

Step 3: The device automatically plays the audio from the USB flash drive;

Note: In the USB flash drive mode, please do not insert the USB cable, some USB flash drive and USB input is not compatible, resulting in no sound output, or amplifier restart. Please unplug the USB cable and try again.

Troubleshooting/QA

1: Why do I feel that the amplifier is underpowered and the sound is very small?

- DA-2120B amplifier has hardware volume adjustment and software volume adjustment. Please make sure the volume of the amplifier is adjusted to the maximum, and the volume of the remote control is adjusted to the maximum.

2: Why do I get loud hiss noise coming from the TV via optical input?

- Please turn off Dolby/DTS audio on your TV or TV App, DA-2120B does not support Dolby/DTS audio input, please select RAW/PCM sound.

3: Can the DA-2120B be powered by batteries?

- Yes, but it is not recommended. The amplifier may be damaged when the battery power is unstable.

4: Can I use headphone with this product?

- No, the DA-2120B cannot be connected to headphones and only supports passive speakers. when the battery power is unstable.

5: Why does the sound is cracking or make a lot of electric noise?

- Please make sure all the cables completely pushed into the devices, incompletely connection will cause this cracking.
- Please remove all the inputs then check whether cracking noise disappear or not, the cracking maybe from the audio source or input cables.
- If you are not using the original factory standard power supply, please replace the power supply before testing. Many power supply in the market have large interference coefficient, which will cause a lot of current sound.

6: My Bluetooth device can't pair with DA-2120B?

- Make sure that DA-2120B Bluetooth mode is on and "BLU" display is flashing;
- Make sure that DA-2120B is not paired with other devices.
- Make sure that the distance between your device and DA-2120B is not too long, put your device close to the DA-2120B to have a try.
- Make sure there are no obstacles between your device and DA-2120B, obstacles will affect the Bluetooth operation distance.
- Please try to change another Bluetooth audio source to test.
- Replug power supply and restart the DA-2120B and then try to connect again, try to use another brand of mobile phone.
- Please unplug the USB flash drive, make sure no USB flash drive plug into the amplifier.

7: No Dolby/DTS audio and I still get noise through the USB input?

- Please switch the USB port to USB 3.0 or back USB port and try again, as some USB ports have unstable data transmission;
- Please try again with another computer;
- Please replace the PC-USB cable and retest, contact me for compensation if the original cable is faulty;
- Please change the power supply adaptation and retest, why? Because of the ageing of the power supply there may be an abnormal power supply resulting in white noise. I recommend using the 9V-24V to power it.

8: USB Device not recognized on Windows?

- Computer sound setting: Select Start, then type device manager in the Search box, and then select "Device Manager". Expand Universal Serial Bus controllers. Press and hold (or right-click) the DA-2120B (Digital Hifi Audio) device and select Uninstall.
Repeat for each device to uninstall.
Restart your computer.
Your USB controllers will automatically install.
- Please try another computer connection.
- Please try another USB 3.0 interface connection.
- Please try an alternative USB cable.
- Please unplug the USB flash drive, make sure no USB flash drive plug into the amplifier.

9: Why do I get an intermittent sound?

- Please switch the USB cable to USB 3.0 port or back USB port and try again, as some USB ports have unstable data transmission;

- Please replace the PC-USB cable and replug power supply to restart the amplifier, contact Fosi Audio customer support for compensation if the original cable is faulty.

10: Can this input through USB, and output to optical with 5.1 surround?

- It cannot. The optical connection is only an input, not an output.

11: One channel does not work?

- Please make sure there is no short circuit in the speaker wire and no short circuit in the positive and negative terminals.
- Please test whether the Bluetooth and RCA input have the same problem first.

If the two modes have the same problem, swap the speaker cables of the left and right channels,

If only RCA mode does not work, change the audio source, change the RCA cable and test again, and make sure that all the cables are completely pushed into the device.

12: Can I leave the DA-2120B power on all the time? Does it safe?

- Sure, the DA-2120B is class D amplifier, will cost very low power when nothing playing through it, and it's safe and you can leave it on all the time.

13: Can I exchange the power supply come with the amplifier and to get more power?

- The DA-2120B come with 24V 4.5A power supply, it's enough for most bookshelf speakers, but if you want to get more power, you can exchange the power supply, the voltage range is DC12-24V, and you can use 24V 6A power supply or more.

13: Can I exchange the power supply come with the amplifier and to get more power?

- Can I exchange the power supply come with the amplifier and to get more power?

**14: Can I listen to two audio inputs at the same time?
Bluetooth music and line in game audio?**

- No, only one mode can be used at a time.

Any problems please leave a message to the customer support email address: support@fosiaudio.com.

Warranty Information

- All Fosi Audio products have an 18-month limited warranty on parts and labor from the date of purchase. Please contact us if you have any problems.

About Fosi Audio

- Fosi Audio designs and builds innovative audio products with all your music in mind. Great sound, simple but elegant designs, high-quality materials, and truly useful features are what Fosi Audio is about. We sincerely hope you get as much enjoyment from our products as we've had to create them!

Our website: www.fosiaudio.com

Amazon store: www.amazon.com/fosiaudio

Our Youtube channel: Fosi Audio

Our Facebook page: Fosi Audio

After-sale Service and Technical Support Email:

support@fosiaudio.com

fosiaudio@hotmail.com



Fosi Audio Product's User Manual

