



Fosi Audio

Fosi Audio DA-2120A User Manual



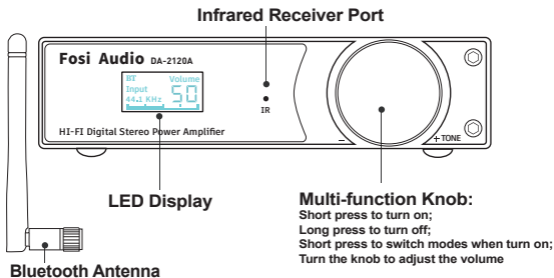
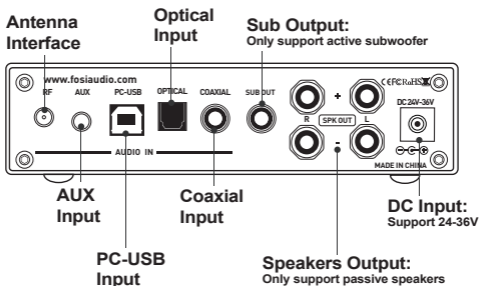
Thanks for choosing us!

Product Specifications

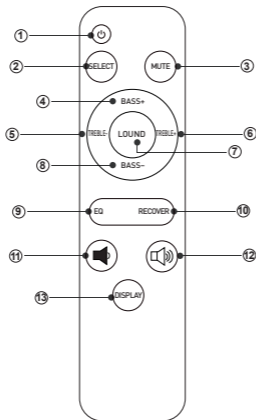
Fosi Audio DA2120A is a Bluetooth hi-res 2.1 channel amplifier that features 50W x2 stereo wireless stream aptX, 24Bit/192kHz compact mini power amp which is equipped with integrated USB DAC coaxial optical input, supporting subwoofer and with a remote control to switch different modes and EQ to enjoy hi-res music!

THD:	≤ 0.01%
SNR:	≥ 105dB
Bluetooth:	V5.0
Bluetooth Name:	“BT HIFI AUDIO” or “Fosi Audio DA2120A”
Power Supply:	24V 4.5A
Output:	50W + 50W @4Ω
Terminating Impedance:	2-6 ohm (Recommended 4ohm)
Frequency Range:	20Hz - 20kHz (±1 dB)
Bluetooth Transmission Distance:	Up to 28ft
Input Mode:	Bluetooth 5.0 + AUX + USB + Optical + Coaxial
Output Mode:	Passive Speakers + Active Subwoofer
USB Input Sampling Frequency:	24Bit/192kHz
Optical/Coaxial Input Sampling Frequency:	24Bit/192kHz
System Supported:	XP/W7/W8/W10/MAC/Linux
Size:	L134*W130*H34mm (5.3*5*1.3inch)

Product Overview & Control Functions



Remote Control



Number	Function
1	Turn on/off
2	Mode select: Bluetooth/USB/Optical/Coaxial/AUX
3	Mute on/off
4	Bass up
5	Treble down
6	Treble up
7	Loudness on/off
8	Bass down
9	EQ mode select: Normal/Rock/SoftRock/Jazz/Classical/ Dance/Pop/Soft

10	Recover: 1. HIFI: Treble and bass initialization; 2. TONE-ON: Restore treble and bass gain.
11	Volume down
12	Volume up
13	OLED display on/off

Package Contents

Fosi Audio DA-2120A *1
Remote Control *1
Optical Cable *1
PC-USB Cable *1
Bluetooth Antenna *1
DC 24V Power Supply *1
User Manual *1

Quick Setup

Preparation

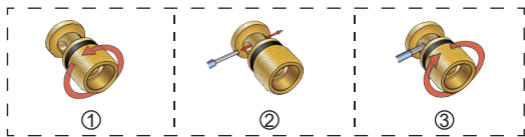
- Prepare 1: DA-2120A, 24V power supply, passive speakers, speaker wires, and banana plugs;
- Prepare 2: Connect the DA-2120A to the passive speakers via the speaker wire or banana plugs;
- Prepare 3: Connect the 24V power supply to the DC input;
- Prepare 4: Short press the Power Knob to turn on the DA-2120A amplifier.

How to connect the speaker wire?

Method 1: Bare wire connection illustration

- ①: Release the horn terminals block terminals;
- ②: Insert the two ends of the speaker wire into the amplifier and speaker terminal holes;
- ③: Tighten the horn terminals.

Note: Please avoid the speaker wires being exposed and touching the amplifier casing, as this may cause a short circuit fault.



Method 2: Banana plugs connection illustration

- ①: Release the banana jacket;
- ②: Loosen the screw;
- ③: Insertion speaker wire and tighten the screw;
- ④: Tighten the banana jacket;
- ⑤: Insert the banana plug into the horn terminals of the speaker and amplifier.

Note: Please take care to avoid contact between the two banana plugs and causing a short circuit fault as some of the banana plugs are metal cased.



Bluetooth for example

Prepare: Bluetooth device (Phone for example)

Step 1: Press the Multi-function Knob to select to Bluetooth mode, “BT” display is flashing;

Step 2: Turn on the Bluetooth on your phone and search for: “BT HIFI AUDIO” or “Fosi Audio DA2120A”, connect to the DA-2120A, “BT” display is always on;

Step 3: Open the audio application, play and enjoy!

Optical for example

Prepare: optical device (TV for example), optical cable.

Step 1: Connect the TV to DA-2120A's optical interface via the optical cable;

Step 2: Press the Multi-function Knob to select to optical mode;

Step 3: Set the TV's optical output sound to RAW/PCM. (NOTE: Due to different TV types, some TVs default Dolby or DTS sound output, DA-2120A does not support Dolby and DTS sound, please select RAW/PCM sound, otherwise you will hear a lot of noise or no sound output.)

Step 4: Open the audio application, play and enjoy!

Coaxial for example

Prepare: Coaxial device (TV for example), Coaxial cable (no include).

Step 1: Connect the TV to DA-2120A's coaxial interface via the coaxial cable;

Step 2: Press the Multi-function Knob to select to coaxial mode;

Step 3: Set the TV's coaxial output sound to RAW/PCM. (NOTE: Due to different TV types, some TVs default Dolby or DTS sound output, DA-2120A DOES NOT support Dolby and DTS sound, please select RAW/PCM sound, otherwise you will hear a lot of noise or no sound output.)

Step 4: Open the audio application, play and enjoy!

AUX for example

Prepare: AUX device (phone for example), 3.5mm to 3.5mm male cable (no include).

Step 1: Connect the phone to DA-2120A's AUX interface via the 3.5mm to 3.5mm male cable;

Step 2: Press the Multi-function Knob to select to AUX mode;

Step 3: Open the audio application, play and enjoy!



Troubleshooting/QA

1: Why do I get loud hiss noise coming from the TV via optical input?

- Please turn off Dolby/DTS audio on your TV or TV App, DA-2120A does not support Dolby/DTS audio input.

2: Can this product be used at 220 volts?

- Yes, the power supply can work at any AC 110V-240V.

3: Does the DA-2120A support Bluetooth 5.0 & aptX?

- The DA-2120A supports Bluetooth 5.0 and backwards compatibility with 4.2, 4.0, etc. Also, the DA-2120A supports Bluetooth aptX.

4: Why can't I use aptX to connect to the DA-2120A?

- The DA2120A supports aptX but still requires a Bluetooth device (e.g. mobile phone) that also supports aptX to work. Please check that your Bluetooth device has aptX enabled or seek support from your Bluetooth device's customer service for further assistance.

5: Can I use headphone with this product?

- No, the DA-2120A cannot be connected to headphones and only supports passive speakers or active subwoofer output.

6: Why does the sound is cracking or make a lot of electric noise?

- Please make sure all the cables completely pushed into the devices, incompletely connection will cause this cracking.
- Please remove all the inputs then check whether cracking noise disappear or not, the cracking maybe from the audio source or input cables.

- If you are not using the original factory standard power supply, please replace the power supply before testing. Many power supply in the market have large interference coefficient, which will cause a lot of current sound.

7: My Bluetooth device can't pair with DA2120A?

- Make sure that DA2120A Bluetooth mode is on and "BT" display is flashing; "BT" display is always on to indicate that it is connected
- Make sure that DA2120A is not paired with other devices.
- Make sure that the distance between your device and DA2120A is not too long, close your device to DA2120A to have a try.
- Make sure there are no obstacles between your device and DA2120A, obstacles will affect the Bluetooth operation distance.
- Please try to change another Bluetooth audio source to test.
- Replug power supply and restart the DA2120A and then try to connect again, try to use another brand of mobile phone.

8: No Dolby/DTS audio and I still get noise through the USB input?

- Please switch the USB port to USB 3.0 or back USB port and try again, as some USB ports have unstable data transmission;
- Please try again with another computer;
- Please replace the PC-USB cable and retest, contact me for compensation if the original cable is faulty;
- Please change the power supply adaptation and retest, why? Because of the ageing of the power supply there may be an abnormal power supply resulting in white noise. I recommend using the 9V-24V to power it.

9: USB Device not recognized on Windows?

- **Computer sound setting:** Select Start, then type device manager in the Search box, and then select “Device Manager”. Expand Universal Serial Bus controllers. Press and hold (or right-click) the DA-2120A (Digital HiFi Audio) device and select Uninstall.
- Repeat for each device to uninstall.
- Restart your computer.
- Your USB controllers will automatically install.
- Please try another computer connection.
- Please try another USB 3.0 interface connection.
- Please try an alternative USB cable.

10: Why do I get an intermittent sound?

- Please switch the USB cable to USB 3.0 port or back USB port and try again, as some USB ports have unstable data transmission;
- Please replace the PC-USB cable and replug power supply to restart the amplifier, contact Fosi Audio customer support for compensation if the original cable is faulty.

11: Can this input through USB, and output to optical with 5.1 surround?

- It cannot. The optical connection is only an input, not an output.

12: One channel does not work?

- Please test whether the Bluetooth and RCA input have the same problem first.
- If the two modes have the same problem, swap the speaker cables of the left and right channels, or change another speakers, and then test whether this channel still does not work;

- If only RCA or Bluetooth mode does not work, change the audio source, change the RCA cable and test again, and make sure that all the cables are completely pushed into the device.

13: DA2120A supports subwoofer, is it possible to connect the subwoofer directly?

- The sub output can be connected to active/powered subwoofer or to subwoofer amplifier then to passive subwoofer.

14: Can I leave the DA-2120A power on all the time? Does it safe?

- Sure, the DA-2120A is class D amplifier, will cost very low power when nothing playing through it, and it's safe and you can leave it on all the time.

15: Can I exchange the power supply come with the amplifier and to get more power?

- The DA-2120A come with 24V 4.5A power supply, it's enough for most bookshelf speakers, but if you want to get more power, you can exchange the power supply, the voltage range is DC12-24V, and you can use 24V 6A power supply or more.

Any problems please leave a message to the customer support email address: support@fosiaudio.com.

Warranty Information

- All Fosi Audio products have an 18-month limited warranty on parts and labor from the date of purchase. Please contact us if you have any problems.

About Fosi Audio

- Fosi Audio designs and builds innovative audio products with all your music in mind. Great sound, simple but elegant designs, high-quality materials, and truly useful features are what Fosi Audio is about. We sincerely hope you get as much enjoyment from our products as we've had to create them!

Our website: www.fosiaudio.com

Amazon store: www.amazon.com/fosiaudio

Our Youtube channel: Fosi Audio

Our Facebook page: Fosi Audio

After-sale Service and Technical Support Email:

support@fosiaudio.com

fosiaudio@hotmail.com



Fosi Audio Product's User Manual

