

GYROOR[®]

USER MANUAL

C1Pro

Folding Electric Scooter

EN



Contents

1. Configuration & Packing Listing.....	4
2. Assembling the Device.....	5
3. Display functions.....	8
4. Using the battery.....	10
5. Precautions before Riding	12
6. First use.....	13
7. Precautions for Safe Riding.....	15
8. Maintenance and care.....	17
9. Parameters	21
10. Warranty	22
11. Warranty Card	24

Attention:

1. Fully charged when not in use.
2. Charge once a month when not in use.
3. Check the tire pressure before riding!
The recommended tire pressure is 2.2-2.5 bar.
Regular check the tire pressure level during use!
4. If you need any help, please directly contact our email at scooter-help@gyroor.com or phone at 8337371294.

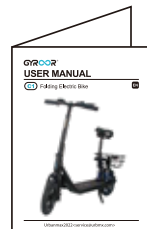
1. Configuration & Packing Listing



Charger



Allen key



User manual

2. Assembling the Device



1. Put the neck in.
2. Make sure the arrows stay aligned.
3. Tighten the bolt at the base of the stem.
4. Lock in.



Assembling the Device



1. Unscrews the assembly at the top.
2. Pop the bar in place.
3. Place the quick release part as it used to be and tighten the screw at the bottom.
4. Tighten the quick release clamp back down.

Please see video instructions on product detail page on amazon if need.



Open the quick release on the seat post mount on the frame and insert the seat post. Adjust the seat height to a comfortable position and then close the quick release.

Preparation

Remove the 4 mounting screws for the luggage basket above the rear mudguard. Adjust the luggage basket and fix it in place with the screws you just removed.



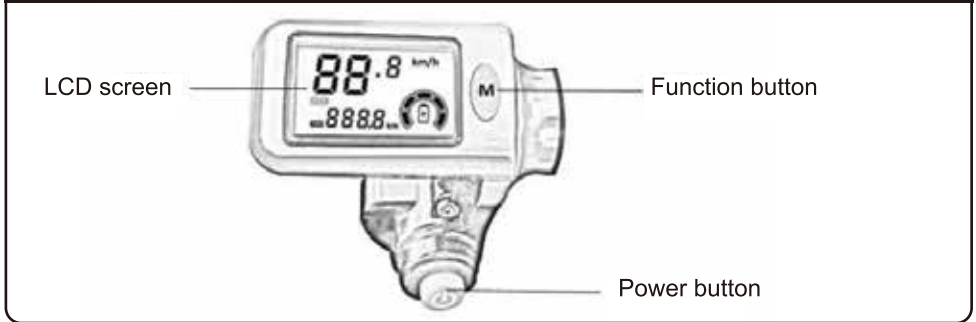
ATTENTION!



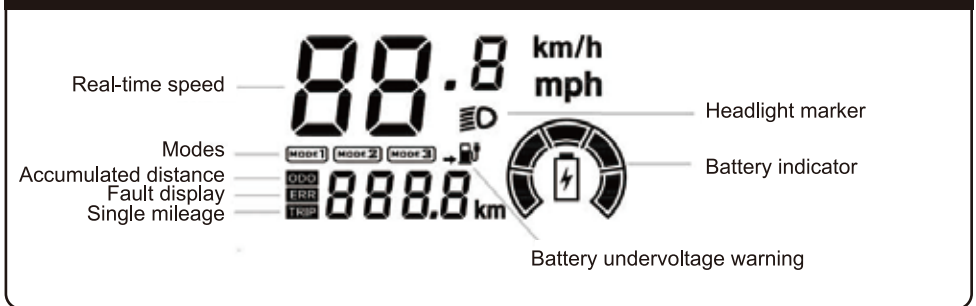
- Make sure that the front light, rear light ,bell and brakes are working well.
- Check the battery capacity on the display and make sure you have enough battery
- Regularly check the tire pressure and fill the tyres with air as needed.
- The recommended tire pressure is 2.5 bar .

3. Display functions

Overall Appearance



LCD interface



Operating Instructions:

1. Power on/off
Single press power button on and single press again off.
2. Switch modes:
Single press M button to change between mode1,mode2,mode3.
Different modes correspond to different speed limits.
3. Switch on/off lights:
Double press M button to switch on and double press again off.
4. Switch the mileage area display content:
By default, single mileage is displayed. Long press the function button (>3 seconds) to switch the display content in the mileage area.
Cumulative mileage (ODO) -> single mileage (TRIP) -> Battery voltage (UXX.X) -> Failure code (ERR)

Display functions

Note:

1. Every time you restart the machine, the single mileage will be reset, and the accumulated mileage will continue to accumulate
2. If no fault is detected, the fault code is skipped during the switchover

5. Fault code display:

When a fault is detected, the "ERR" icon will be displayed. You can find the fault code according to the fault code displayed in the current mileage area. The current fault. Please refer to the attached table for the meaning of the fault code.

6. Battery undervoltage:

When the battery undervoltage is detected, the undervoltage (charge) sign is displayed on the screen, and the scooter can still ride for some distance, but I recommend charging it immediately.

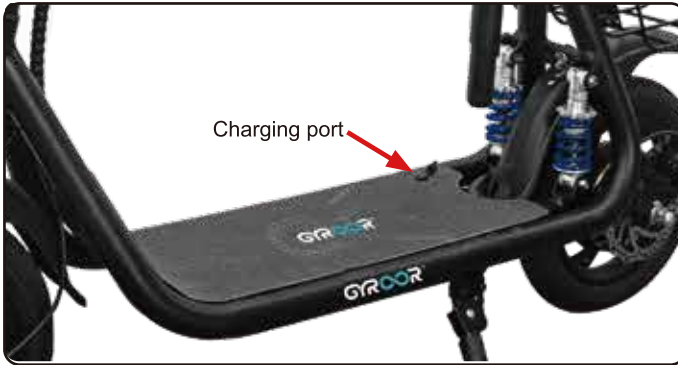
Fault code table

CODE	Meaning
000	Normal
002	Brake handle fault
006	Battery undervoltage
007	Motor fault
008	Rotating handle fault
009	Controller fault
010	Instrument communication reception fault
011	Controller communication reception is faulty

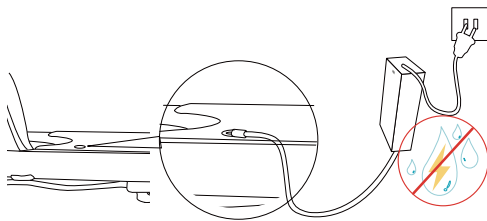
*Guide values, with a user weighing approx. 75 kg and with a fully charged battery on smooth, even road surfaces and under optimal temperature conditions .

4. Using the battery

Charging the battery:



1. The charging port is located at the rear end of the running board as shown.
2. Open the protective cap over the charging port
3. Make sure the charging port and charger are dry.
4. Make sure that the Folding E-Scooter is turned off.
5. Connect the charging cable to the charging port.
6. Connect the charging device's mains plug to a suitable wall socket (100 - 240V / 50 - 60 Hz).
7. The charging light on the charger will light red when charging.
8. The battery is charged once the charging light changes from red to green. You should stop charging at this point.
9. Disconnect the charger from the mains and the Folding E-Scooter.



No wet occasions!



No wet hands!

Battery Charger Model: XHK-800-4215, manufactured by Shenzhen Xin Heng Tyco Electronics Co.,Ltd

Using the battery



WARNING!



- Never remove the battery from the Folding E-Scooter.
- Charge the battery every 1 months for at least 1 hour, even if the Folding E-Scooter has not been in use, otherwise it will lose capacity.
- Regular charging protects the battery from total discharge.
- Never heat the battery or throw it into an open fire.
- Never dispose of battery cells in the household waste.
- Never get moisture on the battery contacts.
- The optimal operating temperature for the battery is between 10° C and 30° C. Above and below this temperature, the power output will deteriorate, resulting in a reduced range and power output.
- The Folding E-Scooter may only be charged with the supplied charger. Ensure the correct voltage supply (100 - 240V / 50 - 60 Hz).
- The Folding E-Scooter must not be charged if the charging cable is damaged. Please contact customer service.
- A battery's service life and performance depends on its age, care and how often it has been used.
- For optimum battery life, charge and store the E-Scooter in a dry and clean environment, preferably at a temperature between 7 and 15° C.
- The Folding E-Scooter takes approx. 5 hours to charge. If the charger is permanently connected to the battery and power supply, this will have a negative effect on the battery life.
- The Folding E-Scooter and the charger must not be covered during charging.
- Please note that a over-discharged battery is irreparably destroyed and must to be replaced for a fee. The battery should never be completely discharged during operation."

5. Precautions before Riding

1. Please kindly check

- if all parts of the E-scooter are well installed without damage;
- if the brake is well;
- if the folding mechanism is locked;
- if there is enough power;
- if the tire is in good condition;
- if the handle is fixed.

2. You need to

- find an open, flat place with a square of at least 4m *20m to practise riding indoor or outdoor;
- fully understand to the riding surroundings, and avoid being disturbed by cars, pedestrians, pets or other obstacles.
- have a skilled assistant who is familiar with riding e-Bike and knows about all precautions and riding methods in this user manual.
- dry and brake it in a safe place after cleaning the bike, for moisture makes brake react slowly.

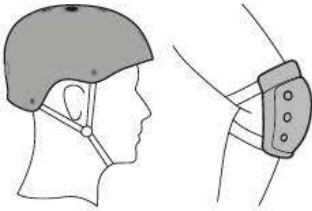
3. Please do not

- on smooth and wet grounds.
- increase the brake distance on rainy days;
- use the E-scooter in bad weathers such as rainy, snowy or icy conditions.
- If you insist in riding the E-scooter under any environment, please ensure that the brake is OK.



6. First use

Before you begin:



Wear a safety helmet and protectors for your own safety.

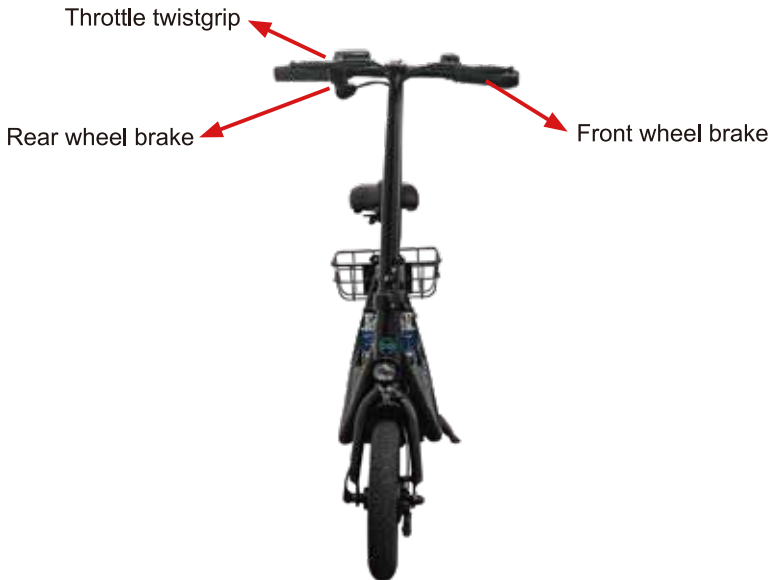
- Wear comfortable leisure or sports clothing and flat shoes while riding.
- Before riding for the first time, make sure you have plenty of space and ensure that there are no obstacles in the way.
- Fold the handlebar up and check the tire pressure.
- Please check your E-Scooter before every journey (see the section on "Maintenance and Care").
- Switch on the E-Scooter (see section on "Display functions").
- Fold in the kickstand before riding, otherwise there may be a risk of accidents and injuries.



First use

First steps

- Use the throttle twist grip to accelerate.
- You can use the front and rear brakes to brake.
- You can choose between three speed levels



Tips:

- Please turn the rear light off after riding every time.
- Please check the battery level before riding and charge if the power is low.
- To fold the E-scooter, please pull the lock lever of the upright tube first.
- Please note the information on storage (see section on "Using the battery")

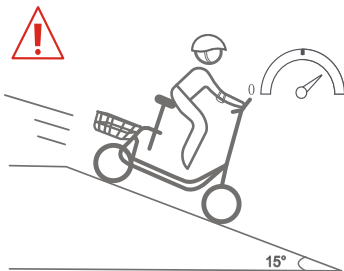
7. Precautions for Safe Riding

E-Scooter is a kind of personal transport tool with certain speeds, which has been strictly inspected on the technology and manufacture. Please use it in accordance with the safety warnings in this manual, otherwise, it may bring risks. Any time or place, it may hurt you or even cause death due to sudden accidents, such as falling, loss of control, collision etc., on the condition that you do not ride e-Scooter by following the manual. In order to reduce risks and avoid injury, you **MUST** carefully read this manual, and obey the following precautions:

1. When riding, please wear the helmet and protectors;
2. Please do not climb slopes exceeding 15° , and do not accelerate or decelerate sharply on slopes;



3. Be cautious to obstacles or slippery surfaces, never ride on grass or cobble roads; please do not ride in water over 30mm;
4. Before use, please confirm whether the power supply is full, or the tire is in a normal state of inflation;





5. DO NOT ride up and down the steps.
6. DO NOT ride in the motorway.



7. DO NOT soak in water;
8. E-Scooter is a single-person vehicle, please do not ride with multiple people;



9. Before you are not familiar with e Scooter, please do not ride faster, but slowly;
10. Due to the particularity of lithium batteries, users should charge it at least once a month;
11. Battery damage caused by improper use or maintenance is not covered by the warranty;
12. E-Scooter is only used as daily transport tool, therefore, please DO NOT use it in extreme sports or other dangerous riding methods.

8. Maintenance and care

- Before each ride, please make sure that all screws or lock lever and quick release clamps are tightened.
- Make sure the tire pressure is correct !
- Only use a soft, damp cloth for cleaning the Folding E-Scooter. Dirt that cannot be removed this way can be removed with plastic polish. Follow the manufacturer's instructions in this regard .



NOTE!



- Never use alcohol, cleaner's naphtha, acetone or other corrosive and volatile chemical solvents that are corrosive to surfaces. These substances can damage the bike's appearance and its exterior or interior structure.
- Never clean the Folding E-Scooter with a strong jet of water or high-pressure cleaner.



WARNING!



- Make sure the Folding E-Scooter is switched off and the charging socket cover is closed before cleaning, otherwise you may be exposed to the risk of electric shock or damage the Folding E-Scooter.

Maintenance and care

- Store your Folding E-Scooter in a dry and cool place.
- A well-maintained battery can still provide good performance even after many kilometres. Charge the battery after each ride and avoid operating the battery on "empty". Please note that the performance of the battery decreases continuously at low temperatures (see section on "Using the battery").



NOTE!



- Do not store the scooter outdoors. Exposing the Folding E-Scooter to sunlight or to hot or cold environments will accelerate ageing of the plastic surfaces, in particular, and reduce the battery life.
- Do not forget to turn off the Folding E-Scooter after each ride and to charge the battery. The cells will be irreparably damaged if the battery is over-discharged. Damage resulting from incorrect use is not covered by the warranty. Removing or opening the battery is not permitted.

·Devices are not intended for use at elevations greater than 2000 m above sea level.

·Prolonged Exposure to UV Rays, Rain and the Elements May Damage the Enclosure Materials, Store Indoors When Not in Use.

·WARNING – Risk of Fire – No User Serviceable Parts

Les appareils ne sont pas destinés à être utilisés à des altitudes supérieures à 2000 m au-dessus du niveau de la mer.

Une exposition prolongée aux rayons UV, à la pluie et aux éléments peut endommager les matériaux de l'enceinte, stocker à l'intérieur lorsqu'ils ne sont pas utilisés.

AVERTISSEMENT- Risque d'incendie et de choc électrique - Aucune des pièces ne peut être réparée par l'utilisateur.

Maintenance and care

Adjusting the brake callipers:

- Check regularly to see whether the brake callipers of the two disc brakes are properly adjusted.
- You will need the Allen key and a rubber band to adjust the brake callipers:
 1. Slightly loosen the two brake calliper mounting bolts until you can move the brake calliper.
 2. Then fix the brake lever with the rubber band to centre the brake calliper.
 3. Tighten both brake calliper mounting bolts again. After removing the rubber band, check whether the wheel can be moved easily.



NOTE!



- The adjustment procedure is the same for both the front and rear brakes.

Maintenance and care

Tautening/loosening the brake cables:

1. To tauten or loosen a brake cable, you first need to loosen the lock nut on the brake lever in question.
2. Then turn the adjusting nut to tauten the brake cable (distance between the brake shoes and brake disc is reduced), or in the opposite direction to loosen it (distance between the brake shoes and brake disc increases).
3. After you have tautened the brake cable, tighten the lock nut again to fix the adjusting nut in place.



NOTE!



- The setting is correct if the brake shoes are a max. 1 mm distance from the brake disc.

9. Parameters

Material	Aluminum
Maximum range	25 miles
Maximum speed	18.6 mph
Bike weight	40 lbs
Maximum load	265 lbs
Display	LCD
Wheel size	12" pneumatic tyres at the front and rear
Brakes	Dual disc brakes
Charger	100-240 V / 50-60 Hz
Charging time	approx. 5 hours
Battery	36 V / 10.4 Ah lithium battery
Airborne noise emissions	58 dB
Vibration intensity	0.09-0.13 mm/s
Gradeability	10°
Operating Temperature in Riding	10-40 °C
Storage Temperature	20-45 °C
Minimum load	55 lbs

- * Guide values, with a user weighing approx. 75 kg and with a fully charged battery on smooth, even road surfaces and under optimal temperature conditions .

10. Warranty

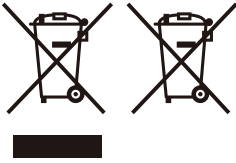
The warranty does not apply in the following cases:

- Use other than the intended,
- improper operation, care and/or maintenance or storage (e.g. damage caused by moisture or excessive temperatures, neglected products, etc.)
- Unauthorized maintenance, misuse, collision, negligence, abuse, intake, accident. Improper use of non-product
- in case of improper transport packaging and/or improper transport
- in the event of improper mechanical influences on the product or parts of the product
- all events which are not due to the processing and manufacture of the product (e.g. fall, impact, damage due to external influences, fire, earthquake, flood damage, lightning etc.)
- unless original proof of purchase is presented
- when used for private purposes, especially for commercial

If this product is used for commercial purposes, all warranty conditions are not maintained.

if the product incurs costs for sending it back/returning it, although neither a warranty case nor a right to return exists, these must be borne by the purchaser.

Storage and Disposal



- Avoid storing the scooter in direct sunlight. Hot temperatures can cause damage to the battery and function of the scooter.
- Avoid storing electric scooter in wet conditions.
- When the scooter is not being used, the battery can lose power. You should test the battery at least once a month, to ensure the battery maintains full charging capabilities.
- Avoid leaving the scooter [and battery] idle for long periods of time, as this can cause battery failure.
- In winter, the batteries may lose power faster because of low temperatures.
- Inappropriate storage can shorten the life of the lithium battery life or cause other mechanical problems. Please store the electric scooter indoors in a cool and dry place.



Dispose of the packaging according to type.
Dispose of paper and cardboard as waste paper, foils via recyclables collection.

Declaration of conformity/certificates

See enclosed leaflet

11. Warranty Card

Name		SN Code	
Purchase Date			
Phone Call			
Email			
Address			
Dealer Name		Phone Call	
Dealer Address			

Contact Us:

Consumer Support Email: scooter-help@gyroor.com

Phone: +1 833 737 1294