

KAKA[®] Industrial

Specifications

Flat steel capacity (warm).....	2-3/4" x 5/16"
Round steel capacity (warm).....	5/8"
Square steel capacity (warm)	5/8"
Bend Angles.....	0 to 120°
Overall dimension.....	45-3/4" x 14" x 11-3/4 "
Base dimension.....	10-1/2"x10-1/2"
Weight.....	71lbs



Unpacking

The Universal bender is shipped from the manufacturer in a carefully packed carton. Thoroughly inspect the product upon opening the package. After unpacking the unit, carefully inspect for any damage that may have occurred during transit. Check for loose, missing, or damaged parts. Shipping damage claims must be filed with the carrier and are the responsibility

of the user.

Warning

The warnings, cautions, and instructions discussed in this instruction manual cannot cover all possible conditions or situations that could occur.

Save this manual

You will need this manual for the safety instruction, assembly instruction, operating procedures, parts list, and diagram. Write your invoice number on the inside front cover. Put both your manual and invoice in a safe, dry place for future reference.

Prepare for Safe Operation

1. Wear proper apparel. Do not wear loose clothing, gloves, neckties, rings, bracelets or other jewelry which may get caught in moving parts of machine.
2. Wear protective hair covering to cover long hair.
3. Wear safety shoes with non-slip soles.
4. Wear safety glasses complying with United States ANSI Z87.1. Everyday glasses have only impact resistant lenses. They are NOT safety

Model UB-100A

glasses.

5. Be alert and think clearly. Never operate tools when tired, or when taking medications that cause drowsiness.

Prepare Safe Working Area

1. Keep work area clean. Cluttered work areas invite accidents.
2. Work area should be properly lighted.
3. Keep visitors at a safe distance from work area.
4. Keep children out of workplace. Make workshop childproof. Use padlocks to prevent any unintentional use of tools.

Tool Should Be Maintained

1. Consult manual for specific maintaining and adjusting procedures.
2. Keep tool lubricated and clean for safest operation.
3. Adopt a continuous maintenance program to keep your bending machine in good working condition.
4. Keep all parts in working order. Check to determine that the guard or other parts will operate properly and perform their intended function.
5. Check for damaged parts. Check for alignment of moving parts, binding, breakage, and mounting or any other

condition that may affect a tool ' s operation.

6. Any damaged part should be properly repaired or replaced. Do not perform makeshift repairs. (Use parts list provided to order repair parts.)

Know How to Use Tool

1. Assemble only according to these instructions. Improper assembly can create hazards.
2. When tools are not in use, store them in a dry, secure place out of the reach of children. Inspect the tools prior to storage and before re-use.
3. Maintain product labels and nameplates. These carry important safety information.

Installation and Assembly

The Universal bender must be securely mounted to a solid surface before using. Operating the tool for certain operations will require exerting considerable force on the handle, thus it is essential that the tool be mounted to a heavy or immovable work bench or other work surface. Be certain there will be adequate clearance for the entire range of motion of the handle with no potential pinch points for

KAKA[®] Industrial

the operator' s hands.

1. Attach the Universal Bender Base(#12) to a solid work surface using 14mm holes provided.

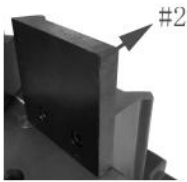


Figure A



Figure B



Figure C

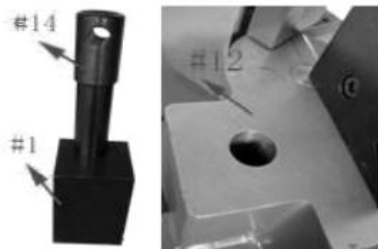


Figure D

2. Connect Die Plate (#2) to Base (#12) using fastener (#4) See Figure A.

3. Insert Sliding Block (#3) Figure B, into

square hole in Rotary Block (#10) Figure C.

4. Insert Eccentric Shaft (#14) thru Block (#1) into Base (#12).

5. Attach Handle (#5) to Rotary Block (#10) using Bolts (#7), Figure 1.

6. Thread Shaft (#15) into Eccentric Shaft(#14). Figure 1.

7. Thread Gauge Shaft (#18) into Base (#12). Slide gauge onto shaft and secure using Nut (#14).

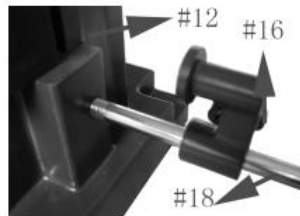


Figure E

8. To set the bend radius, rotate the Rotary Block to the desired setting and lock Shaft Limit (#5) using square nut (#13) See Figure 1.

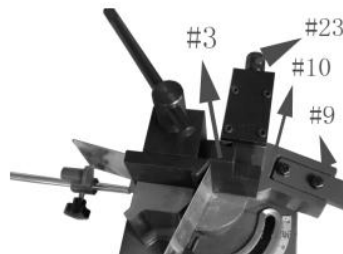


Figure F

Model UB-100A

Operation

Warning

Do not bend material thicker than the benders capacity. You will damage the Bender. Measure the thickness before use.

1. Put the work piece between #1 Block and #2 Die Plate, then rotate #15 Shaft to clamp the work piece. Turn #23 Handle clockwise so that #3 Sliding Block contact the work piece. Rotate #9 Handle clockwise to bend the work piece and turn #23 Handle counter clockwise at the same time to bend the work piece to desired angle.
2. Rotate #15 shaft counter clockwise so that #1 Block is detached from #2 Die Plate. The work piece can then be taken out from the tube bender.

Maintenance

Maintain your tools. It is recommended that the general condition of any tool be examined before it is used. Keep your tools in good working order by adopting a continuous maintenance program in accordance with the recommended procedures found in this manual.

Cleaning. Only use soap and a damp cloth to clean your tools. Many household cleaners are harmful to plastics and other insulation. Never let liquid get inside a tool.

Lubricating. The lubricating of the slid block (every half year to one year) :

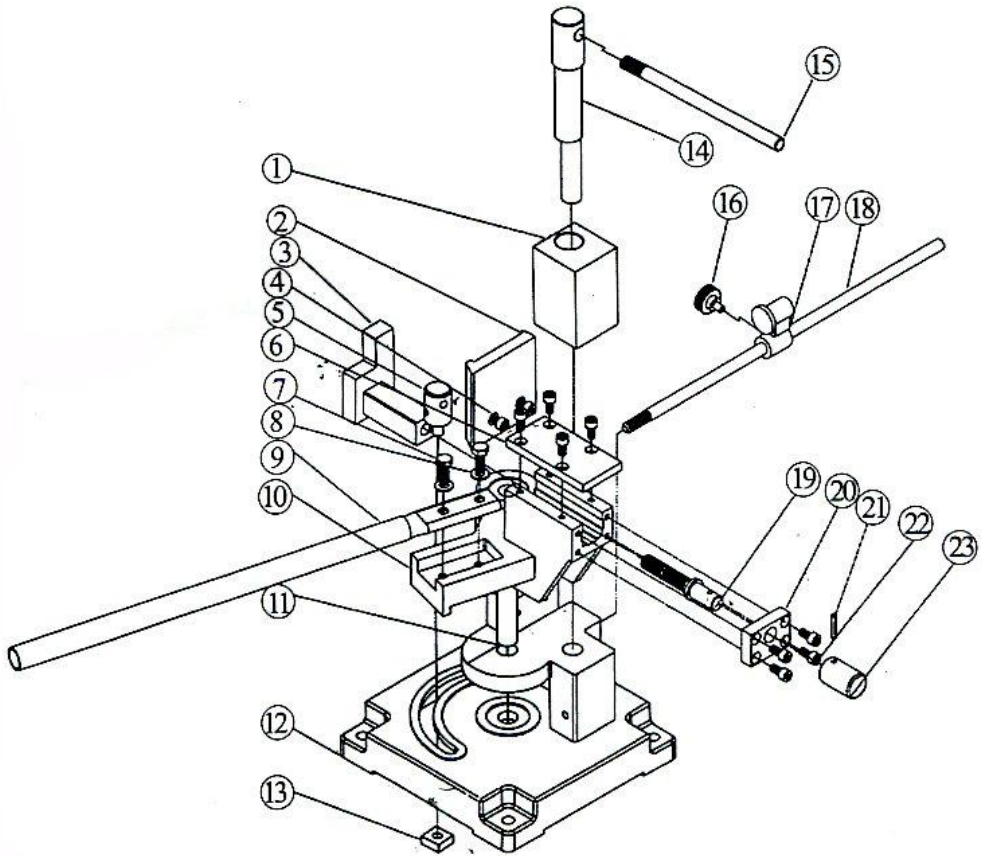
- 1.loosen the screw (#4), take out the press plate (#6), turn the handle (#23), unscrew the shaft (#19) from the slid body (#3).
- 2.add the lubrication oil to the shaft and slide body holes, add the lubrication oil into the slot after taking out the slid body.
- 3.After finishing the lubricating, please screw the shaft into the slide body clockwise and then fix the press plate (#6), After these steps are completed the bender is ready for use..

KAKA[®] Industrial

Part List

Ref.No.	Descripción	QTY
1	Block	1
2	Die Plate	1
3	Sliding Block	1
4	Screw M8x20	2
5	Shaft Limit	1
6	Press Plate	1
7	Bolt M10x25	2
8	Washer 10mm	2
9	Handle	1
10	Rotary Block	1
11	Fixed Shaft	1
12	Main Body	1
13	Square Nut M12	1
14	Eccentric Shaft	1
15	Shaft	1
16	Handle Nut M8x15	1
17	Gauge Clamp	1
18	Gauge Shaft	1
19	Screw Shaft M16x112	1
20	Cover Plate	1
21	Spring Pin 5x30	1
22	Screw M8x16	4
23	Handle	1

Diagram:



SERVICE RECORD

KAKA® Industrial

Date	Maintenance performed	Repair components require

Stock No: 173216
Edition 1 01/2018
Copyright © 2018 KAKA



If you have any questions about the use of this product, please contact the nearest one to you as below:

KAKA INDUSTRIAL LLC

Mail:
info@kakaindustrial.com
Add: 4200 STEVE
REYNOLDS BLVD
STE 6 NORCROSS, GA
30093

KAKA INDUSTRIAL LTD.

Mail:
echo@kakaindustrial.com
Add: 3143 Underhill
Avenue,
Burnaby, B.C V5A3C8,
Canada

KANG INDUSTRIAL PTY LTD

Mail:
kang@kakaindustrial.com
Add: 3 WAYNE COURT
DANDENONG VIC 3175