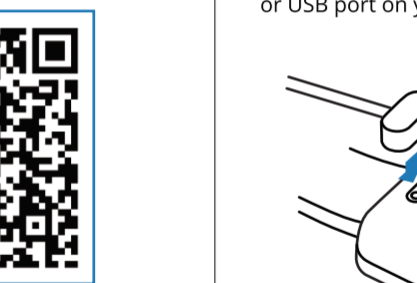




P8 Max USER MAUNAL
SMART WATCH

Downloading the App

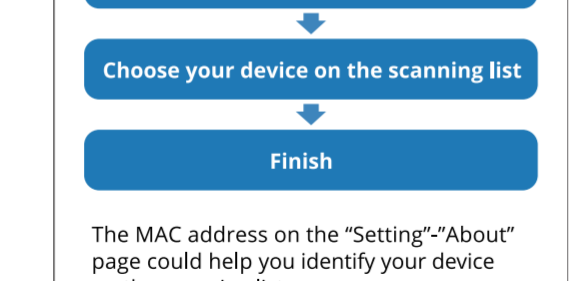
Scan the following QR code, download and install the App.



Scan QR Code and Download

Charging and Active

Charging the device to active before the first time using; To charge your device, plug the charging cable into the adapter or USB port on your computer.



Pairing

Open the App and set up your profile

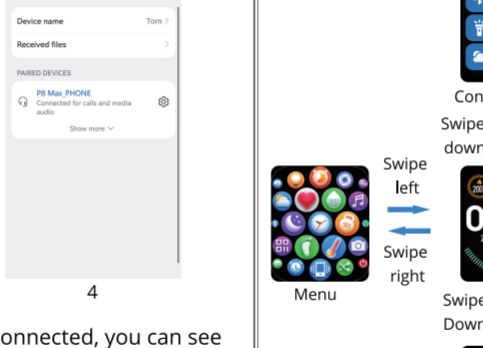
Go to the 'Device', Click [Add a Device]

Choose your device on the scanning list

Finish

The MAC address on the "Setting"- "About" page could help you identify your device on the scanning list.

Connect the P8 Max and P8 Max_PHONE



3. When the P8 Max is connected, you can see the P8 Max_PHONE pairing request. After you click "PAIR", you can use P8 Max to dial

4. And you can see the P8 Max_PHONE in your PAIRED DEVICES list.

Use the Touch Screen



Smart Watch Features

PHONE

You can see the "RECENT CALL", "DIAL PAD", "CONTACT"

RECENT CALL: Recently happened call record, DIAL PAD: Keyboard that can make a call, CONTACT: Use Dafit to set your favorite contacts.

DIAL PAD

Keyboard that can make a call, you can click the number and call icon.

NOTE: Use P8 Max to make a call, the voice come out form P8 Max. If you use your mobile phone to make a call, the voice come out form mobile phone defaulted, you can choose it come out form P8 Max on phone call interface.

Smart Watch Features

SLEEP

Sleep

If you keep wearing Smart Watch in your sleep, it can provide the hours slept and quality of sleep stats on both the screen and the APP.

NOTE: Sleep stats reset to zero at 8:00 pm.

MEASURE HR

Heart Rate Test

The Smart Watch could record your heart rate all day. You also could tap on the page to start measuring heart rate.

Smart Watch Features

SP02

SpO2 Test

Tap the SpO2 page to start measuring your SpO2. On the SpO2 page, It can show the SpO2 measured data of the last times.

MEASURE BP

blood pressure

Click on the blood pressure interface to measure the current body state. More detailed information analysis and data records can be viewed in the client.

Smart Watch Features

STEPS

Sports

Smart Watch automatically tracks steps taken on the screen.

NOTE: Your movement stats reset to zero at midnight.

TRAINING

Training

Tap the training icon on the menu to start a new training measure recording, there are 8 sport modes to be chosen. The last training recording will be shown on the training page.

Smart Watch Features

Remind to Drink

The smart watch will remind you "Time to Drink Some Water" at the planned drinking time.

Note: You can set the feature in the APP.

WEATHER

weather

It could show the weather info of current and tomorrow on the weather page. weather info is synced after connecting with the APP, it will not be updated after a long disconnected.

Smart Watch Features

MESSAGES REMINDER

Messages Reminder

The device can sync incoming notifications from Twitter, Facebook, Whatsapp, Instagram etc. Recently 3 messages can be stored.

Note: You can switch of/off the incoming notification in the APP.

SHUTTER

Remote Shutter

After connecting the device, you can remote control the camera on your phone.

Smart Watch Features

ALARM

Silent Alarms

set up the alarm on the APP. The device will vibrate to remind on time.

STOPCLOCK

Stop Watch

Tap the start button on stopwatch page to start timing, and tap the stop button to stop timing.

Smart Watch Features

THEATER

Theater Mode

The device will turn off the vibration and turn down the brightness when the theater mode is turned on.

Note: You can turn on/off the theater mode in the control center.

Remind to Move

The device will vibrate to remind you to make a relax after 1 hour sitting.

Note: You can switch on/off the feature in the APP.

Getting to Know Your Device

1.Environmental Conditions
Operating temperature: 14°F to 122°F (-10°C to 50°C)
Non-operating temperature: -4°F to 140°F (-20°C to 60°C)

2.Size
Fits a wrist between 5.5 and 7.7 inches in circumference.

3.Disposal and Recycling
Please kindly be aware that it is the consumer's responsibility to properly dispose and recycle Smart Bracelet and accompanying components. Do not dispose of Smart Bracelet with common household waste, the Smart Bracelet unit is considered electronic waste and should be disposed of at your local electronic equipment collection facility. For more information, please contact your local electronic equipment waste management authority or the retailer where you bought the product.

General Info & Specifications

Using Quick View
With Quick View you can check the time or the message from your phone on your Smart Bracelet without taping. Just turn your wrist towards you and the time screen will appear for a few seconds.