

- ① Unscrew the clamp stand
- ② Pull the upper plastic base up
- ③ Fix the clamp stand on the table

*** Note:** Twist the bendy tube back and forth like S or spiral shape to keep the balance



Warm Tips

1. Before use, please twist the flexible arm back and forth like S, Z or spiral shape for better stability, especially as holding a heavy tablet.
2. Do not over-tighten the screw, otherwise, may break the upper plastic panel.
3. Please try to mount the holder on flat surface.

Warranty

18 Months from the date of purchase

Contact US

For suggestions and/or comments regarding our products or for any quality-related issue, please feel free to contact us at support@choetech.com, our representative will get in touch with you within 24 hours ... normally less than 12 hours during business hours.

Statement

1. We're only able to provide after-sales service for purchases made directly from CHOETECH. If you purchased through a 3rd-part retailer, please contact the original seller for service.
2. Please note that unauthorized reselling of CHOETECH products is prohibited.

Thank you for using CHOETECH H013 Long Arm Rotating Holder.

Enjoy CHOETECH items.

CHOETECH

Web: www.choetech.com
 Email: support@choetech.com
 OEM/ODM: b2b@choetech.com
<http://www.facebook.com/choetechofficial>
<http://www.twitter.com/CHOETECH>
 Tel: +86-755-2718 6275



CHOETECH

Instructions
Specifications

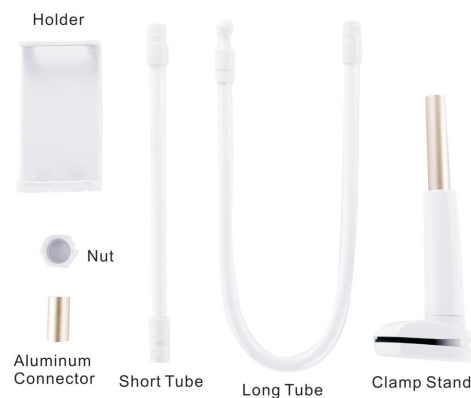
Long Arm Rotating Holder
For Cell Phones, Tablets, E-readers

H013

Thank you so much for choosing CHOETECH H013 Long Arm Rotating Holder!

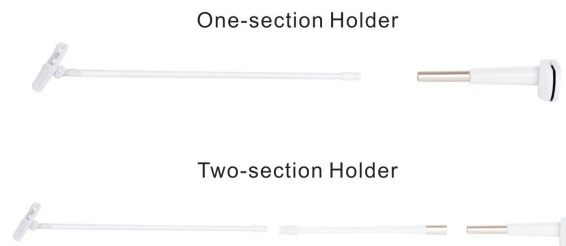
We recommend you to read this user manual carefully before using the product to ensure safety and proper use. The Manual contains important information ... please retain for future reference.

Package Contents



Two Setup Options

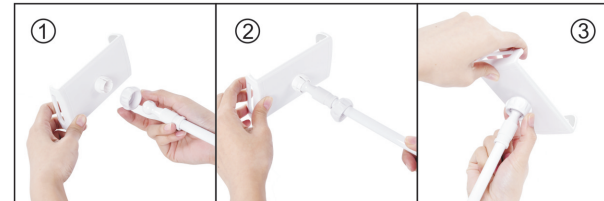
Install the holder with one tube or two tubes as you need.



Installation Steps

A) One-section Holder Installation

Step 1: Connect the long tube with the holder



- ① Put the nut into the long tube
- ② Install the ball into the interface
- ③ Screw the nut tightly

Step 2: Connect the Step 1 setup with the clamp stand



- ① Align clamp stand with long tube
- ② Screw them tightly
- ③ Completed

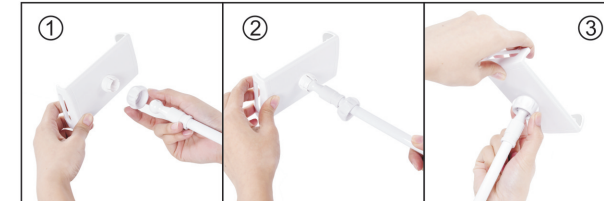
Step 3: Clip the clamp stand on your desired location



- ① Unscrew the clamp stand
- ② Pull the upper plastic base up
- ③ Fix the clamp stand on the table

B) Two-section Holder Installation

Step 1: Connect the long tube with the holder



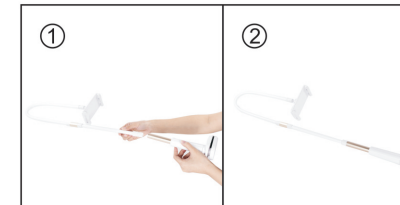
- ① Put the nut into the long tube
- ② Install the ball into the interface
- ③ Screw the nut tightly

Step 2: Connect the long tube with short tube via the connector



- ① Install the connector to the long tube
- ② Connect the short tube via the connector
- ③ Screw the connector tightly

Step 3: Connect the short tube with the clamp stand



- ① Align the clamp stand with the short tube
- ② Screw tightly

Step 4: Clip the clamp stand on your desired location