

IQUNIX L80 Driver Installation Guide

- Two firmware needs to be updated first to successfully use the driver for L80.

Step 1: Update the firmware on Windows in wired mode.

Step 2: Update the firmware on IOS via BlueTooth mode.

Step 3: Install and apply the driver

- Please make sure to do Step 1 and then Step 2. If not, the keyboard will be completely UNRESPONSIVE.
- If the IOS firmware does not upgrade successfully at step 2, the keyboard will remain UNRESPONSIVE.
- If you only update it on one of the systems, the keyboard will remain UNRESPONSIVE.

*****Very important*****

Please note that there is a chance that the files are reported by your computer or your protection software as a risky file or file with a virus. It will make the system delete the downloaded application. You will have to change the security setting of your computer to successfully download in this case. Our source is safe to download.

You will need to update the firmware on **TWO** different systems to finish. Please make sure to prepare BOTH no matter which system you use on a daily basis.

Please have the following devices with you now to begin.

- **IOS** system (iPhone or iPad), and
- **Windows** 7 (or later) system

Step 1:

Please follow the instructions below to update the firmware of your A80 On WINDOWS system.

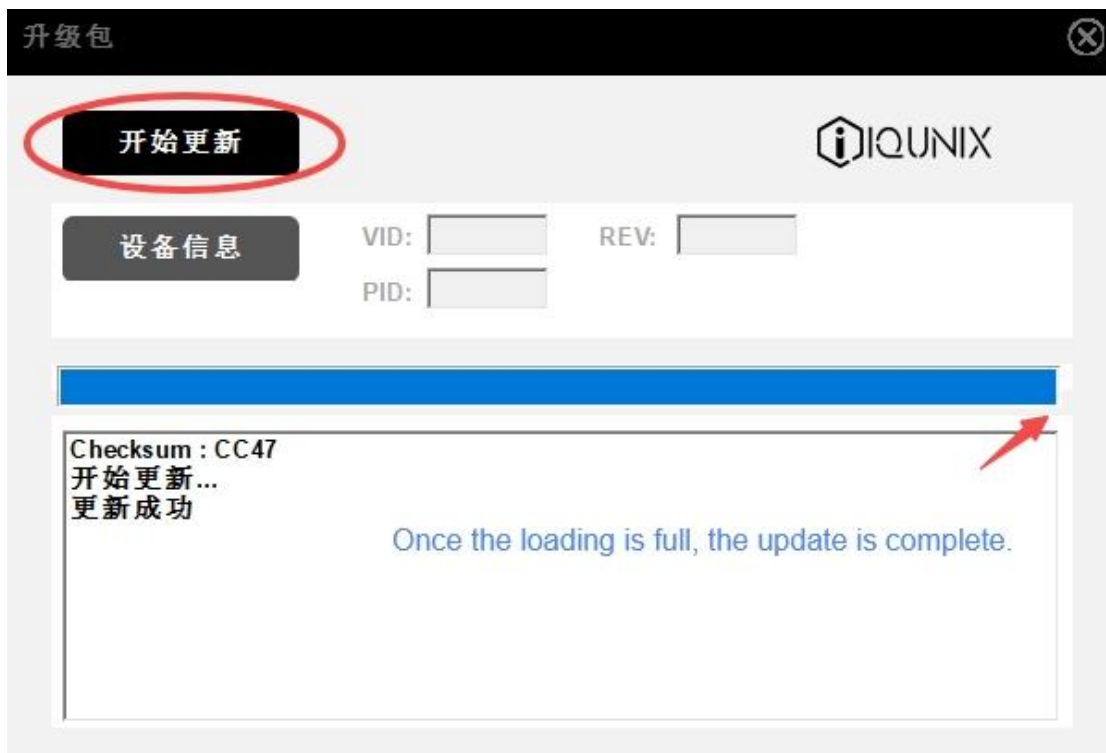
The Windows firmware can only be installed in **wired mode**.

Download Link for Firmware on Windows:

<https://drive.google.com/file/d/1JIPD-Rrw4UoLqfO5OAvnglAeOLO5tU2A/view>

Guide of Firmware on Windows

Please click the labeled black button and wait for the progress to be completed as below:



Step:2

Please follow the instructions below to update the firmware of your L80 On IOS system.

Preparing to Update the Firmware on IOS:

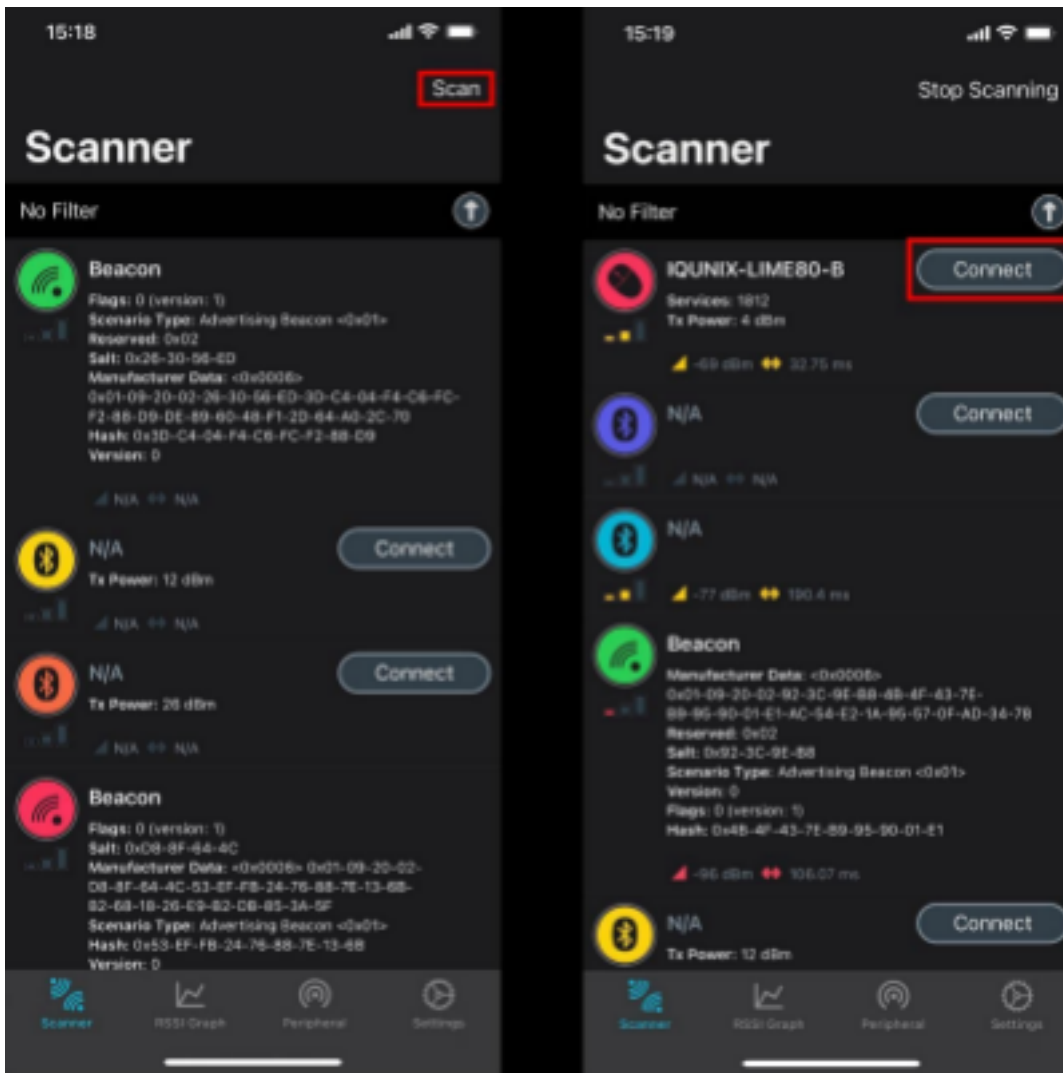
[Click the link and download the nRF Connect for Mobile from App Store] <https://apps.apple.com/cn/app/id1054362403>

[Download the L80 Firmware IOS firmware]

https://drive.google.com/file/d/1QtP546bpC6GtdGPv_VwdvrDxg9kegjbe/view?usp=sharing

To update the firmware of your L80 **On IOS system**, follow the instructions below:

1. Toggle the keyboard Mode Switch to the wireless side.
Press and Hold FN+1 for 5 seconds to enter Bluetooth pairing mode.
2. Launch **nRF Connect**, allowing for data networks and Bluetooth.
Click **Scan** on the top right.

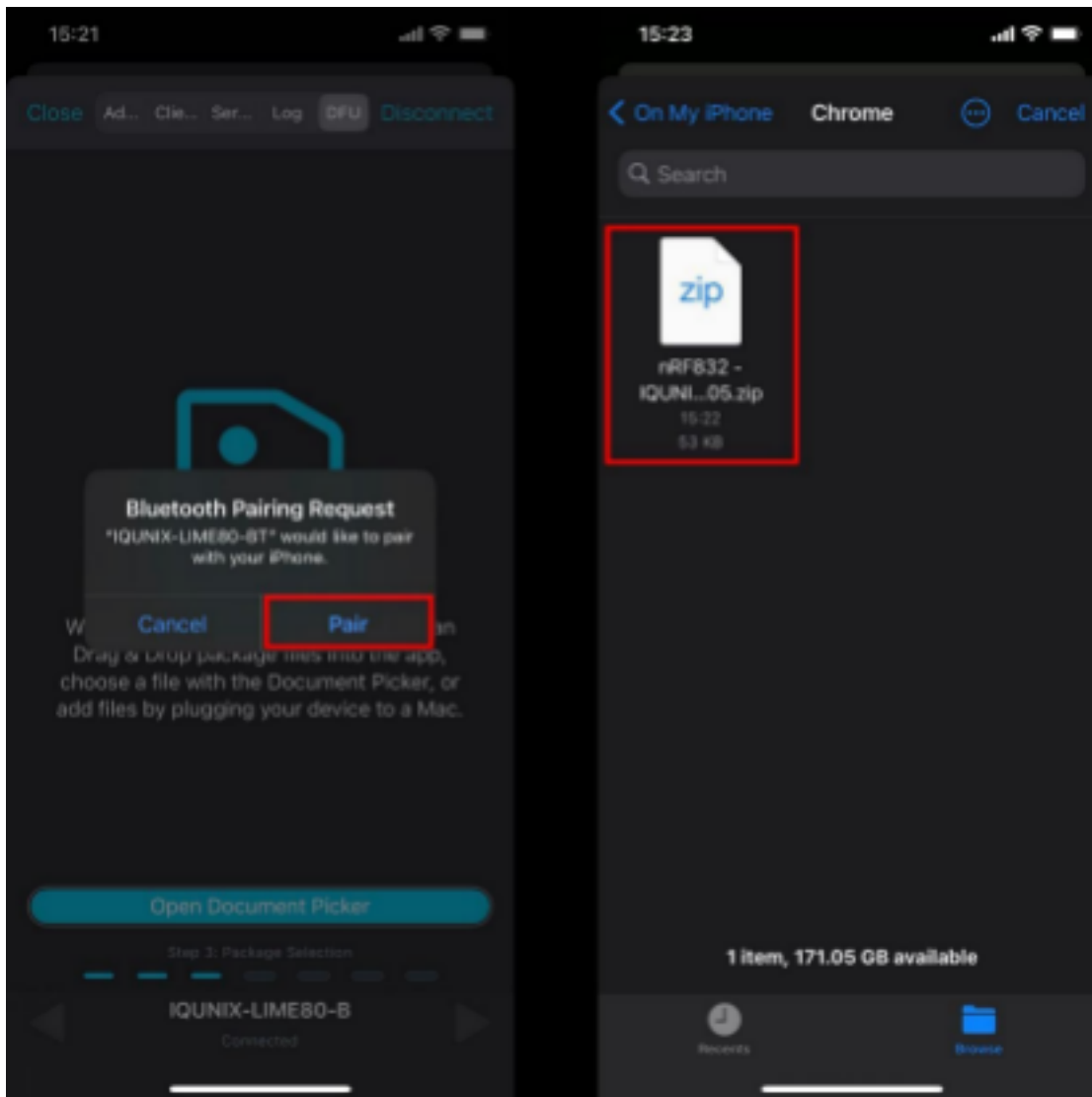


3. Click **Connect** when **IQUNIX-LIME80-B** appears, and then click **Pair**.

***If you cannot find the corresponding keyboard device in the list, you can try the following operations to troubleshoot.**

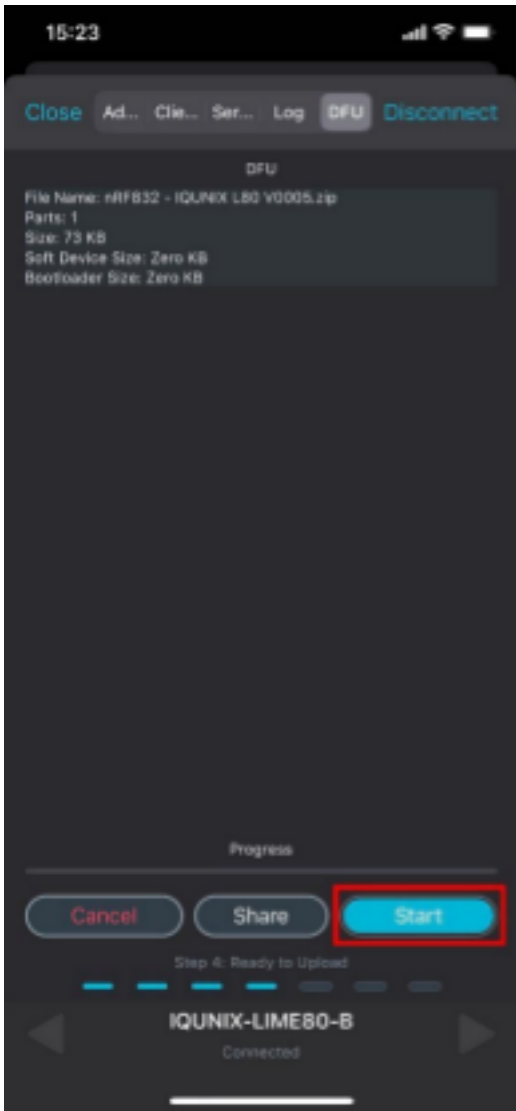
- **Pull down to refresh and search for keyboard devices again. It might take a while (up to several minutes) for the device to appear. Please keep refreshing the page and make sure the keyboard is in pairing mode.**
- **Check if the keyboard is in pairing mode (the Bluetooth indicator flashes in blue quickly)**
- **Check whether the keyboard device has been connected to the mobile phone, if it is connected, you need to ignore/remove the device first from your phone's Bluetooth device list.**

4. Swipe left to get to the last page of DFU. Click **Open Document Picker**, and choose **L80 IOS Firmware.zip** just downloaded.



5. Click **Start** after the check.

6. Update is completed when the **DFU logo** shows up.



Step: 3 Installation of AL80 Driver

The firmware updates are now finished. Please download and follow the instruction to install.

Download Link for AL80 Driver

<https://drive.google.com/file/d/1gqPaGrrNSLvIZ2BRpLUN4SGpjbXUSs4/view?usp=sharing>

*Please note that there is a chance that your computer or your protection software reports the file as a risky file or file with a virus. It will make the system delete the downloaded application. You will have to change the security setting of your computer to download successfully.



Opt for English (the left one) as the installation language, the following steps will be in English.

Thank you for your time reading this guide.