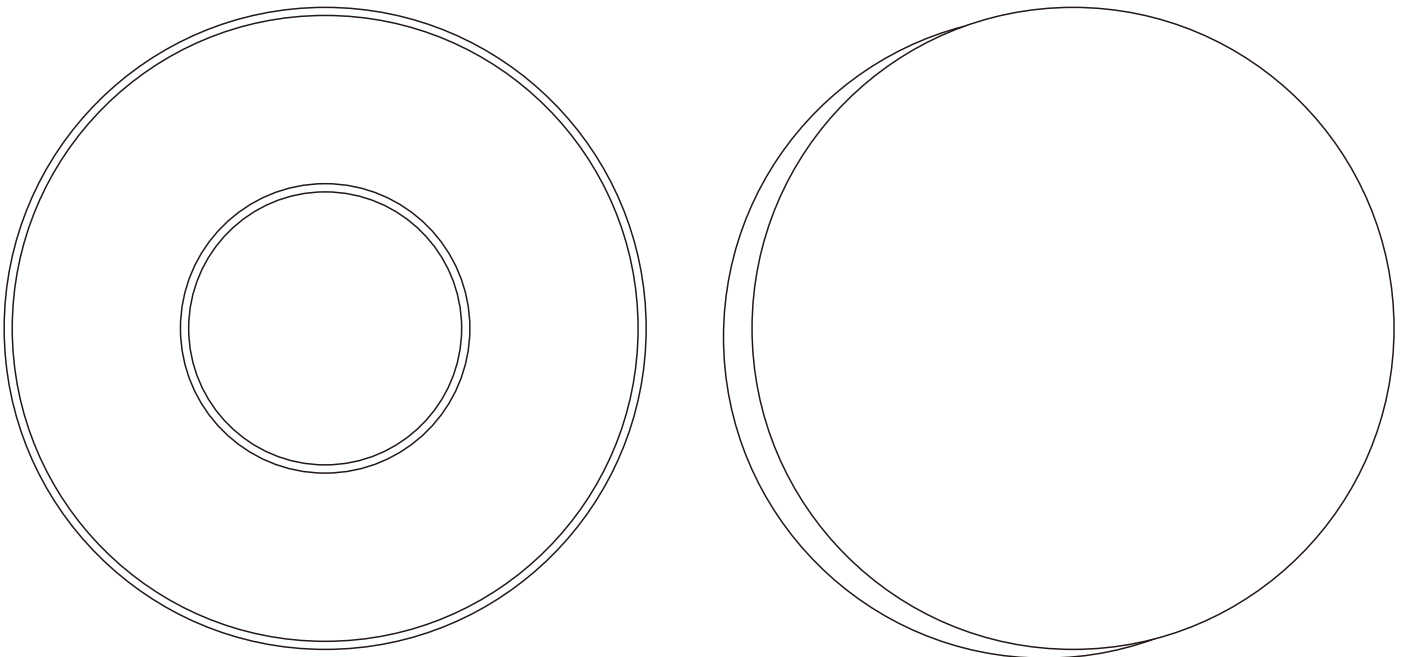


Item Number: F00097

WARNING


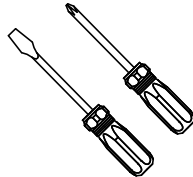
1. Please read the instruction carefully and save it as you may need it at a later time.
2. Mounting surface should be clean, dry, flat, strong enough and 1/4" larger than the canopy on all sides. Any gaps between the mounting surface and canopy exceeding 3/16" should be corrected as required.
3. Make sure that the ceiling or wall can stand the weight of the mirror before installation.
4. The safety instructions appearing in this manual are not meant to cover all possible conditions that may occur. It must be understood that common sense, caution and care must be used with any products.

IMAGE FOR FINISHED PRODUCT:



**TOOLS REQUIRED
(NOT INCLUDED):**

Before starting assembly and installation please prepare the needed tools as below picture

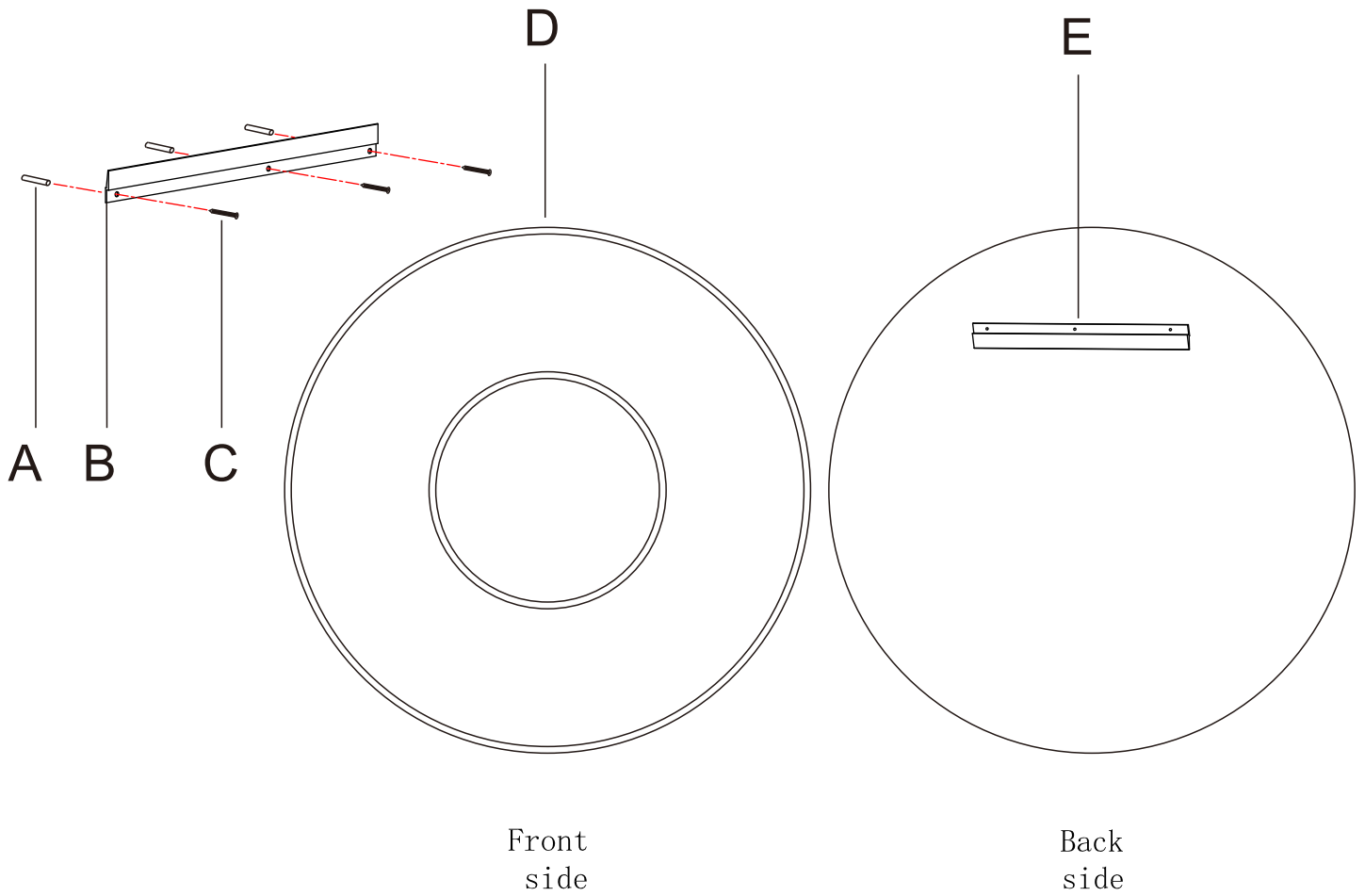
	Ladder		Philips Heador Flat Blade Screwdriver
---	--------	--	---------------------------------------

ORDERING PARTS

Keep this sheet for future reference in case you need to order replacement parts. All parts for this fixture can be ordered from the place of purchase. Be sure to use exact wording from illustration when ordering parts.

CLEANING

To clean, wipe the fixture with a soft cloth. Clean glass with a mild cleaner (such as mild and non-abrasive soap). Do not use abrasive materials such as scouring pads or powders, steel wool or abrasive paper.

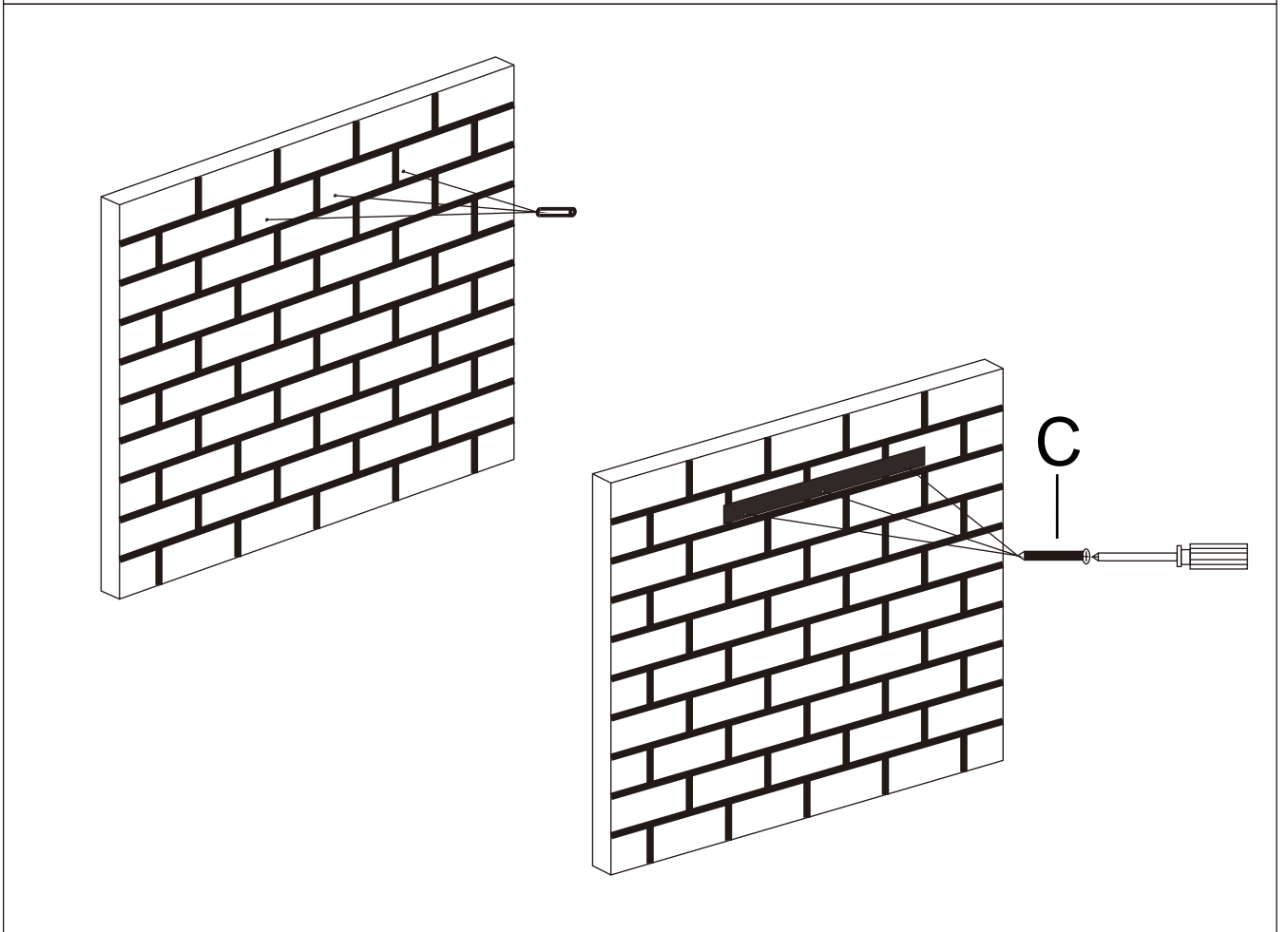
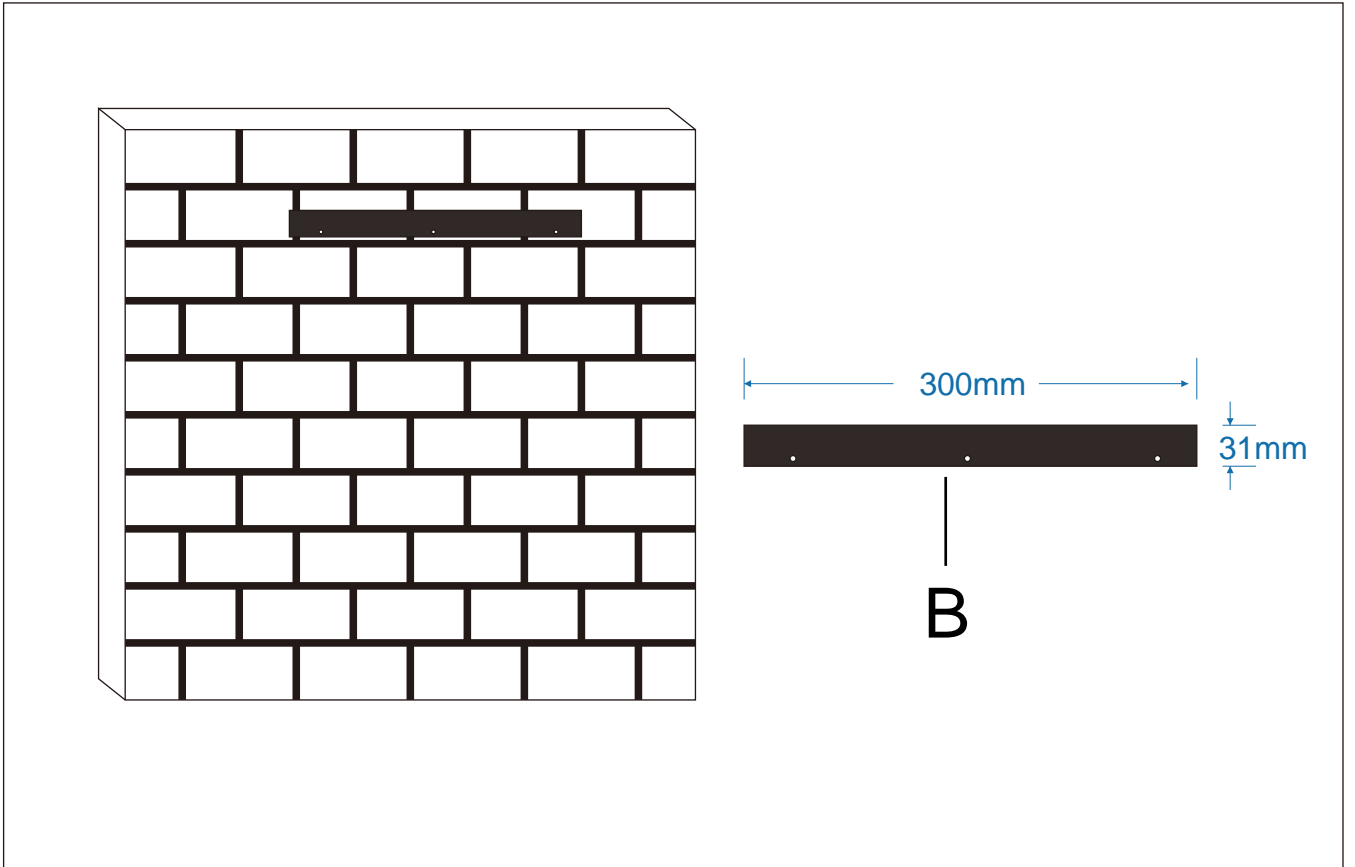


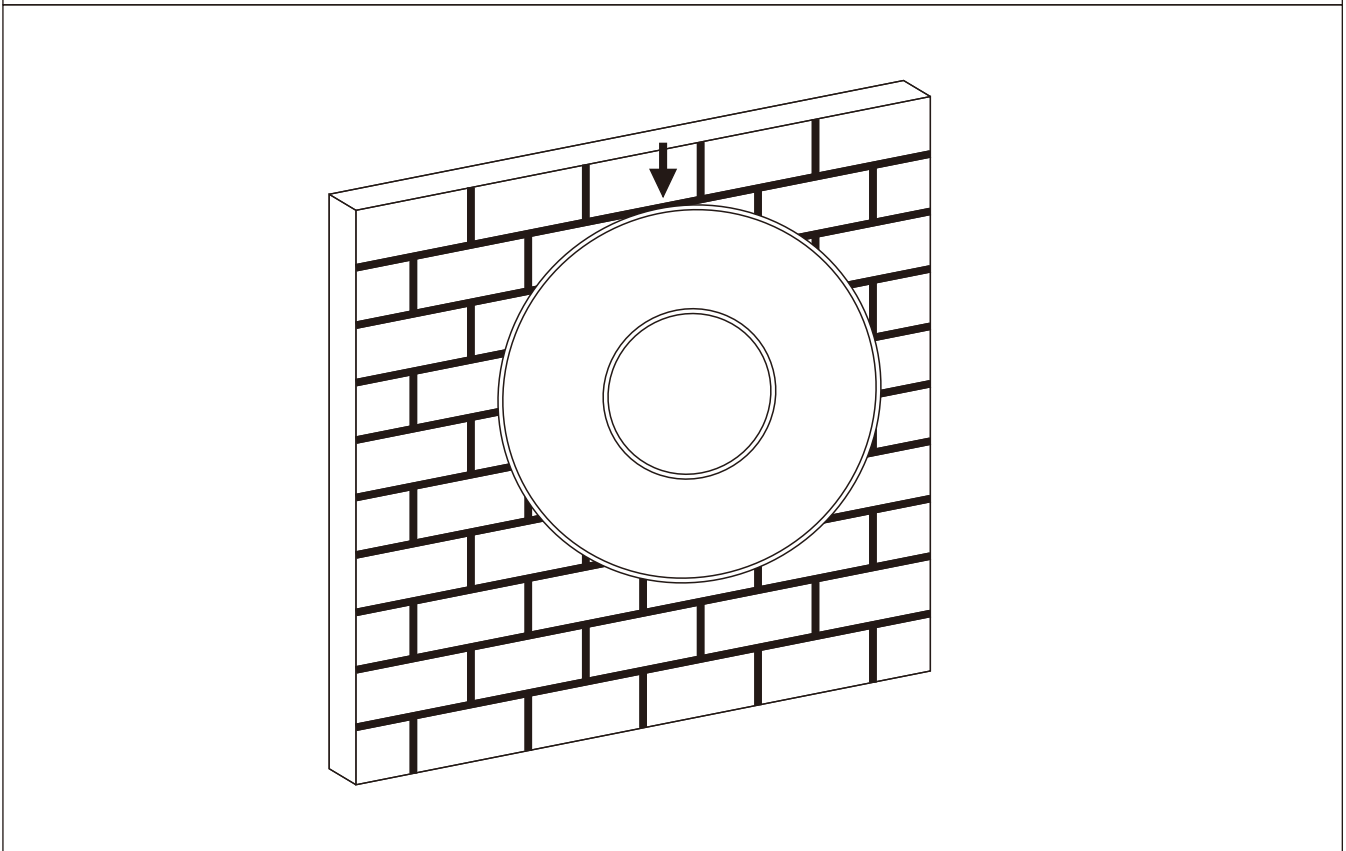
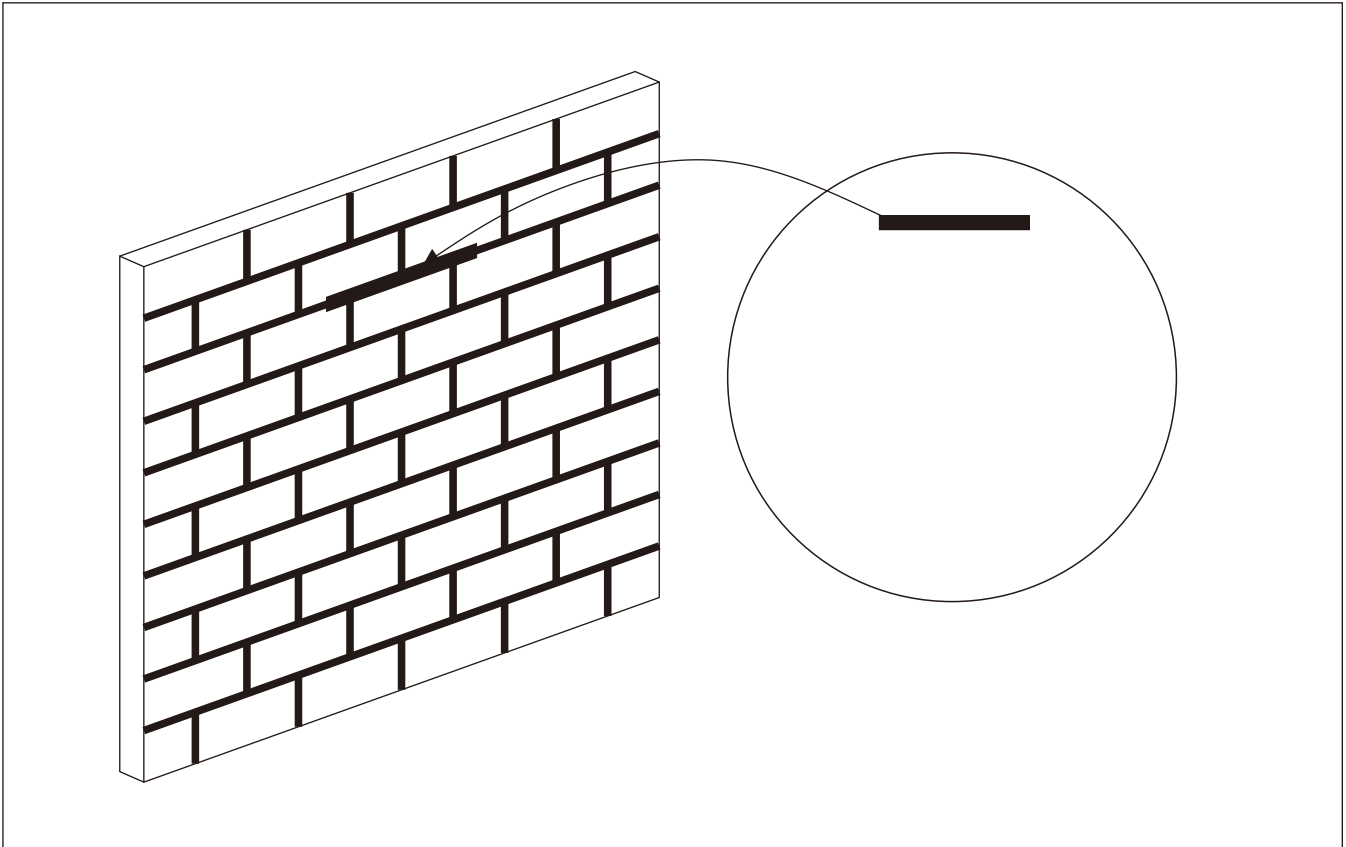
PARTS TYPE & QTY INCLUDING:

- (B) Hanging plate (1)
- (D) Mirror (1)
- (E) Back plate (1)

ACCESSORIES & QTY ENCLOSED:

- (A) Wall anchor (3)
- (C) Self tapping screw (3)





ASSEMBLY & INSTALLATION INSTRUCTIONS:

Carefully remove the fixture from the carton and check that all parts and accessories are included as shown in the above illustration.