

# User Manual

## **【3D printing resin post-processing unit】**

\*Please read the manual carefully before using it, and keep it properly.





## Before Using

---

- DO NOT insert the power cord into the socket when the product is not being used.
- Keep away from any ignition source or electronic device that may produce sparks when using the product.
- When unattended, please cut off the power supply to prevent accidental fire.
- When the product malfunctions, please cut off power and contact EIBOS or the distributor; do not fix it yourself.
- Keep products and accessories out of reach of children.
- This user manual can be modified without any prior notice.
- EIBOS is not responsible for any direct or indirect damages caused by product operation, modification, or any accidents caused by user inattention.

## NOTICE

---

If flammable and explosive liquids (such as Ethanol, IPA, etc., hereinafter referred to as cleaning fluid) are used as the resin cleaning agents, whether it is machine or manual cleaning, the safety regulations for using cleaning fluid should be strictly followed. Users should understand the local laws and regulations on cleaning fluid and the MSDS of cleaning fluid before using it. Using cleaning fluid without knowing all the information mentioned above is strictly prohibited.

It is specially stated that the resin post-processing equipment is only used to help the user to clean up the resin conveniently, and the cleaning fluid is not part of the product sales.

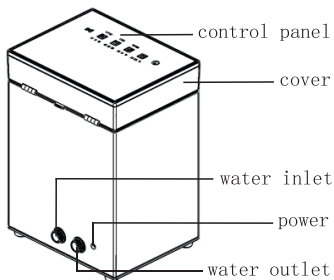
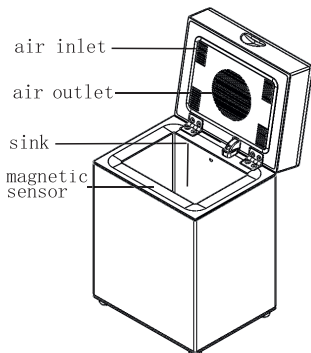
EIBOS is not responsible for direct or indirect accidents caused by the improper use of cleaning fluid or the user's inattention.

## Product Parameter

Input: AC100~240V 50/60Hz  
Product Size: 240x195x345mm  
Package Size: 300x260x445mm  
UV Lamp: 405nm 19W 96pcs  
Capacity: L(1.3L)/ M(2.2L)/ H(3L)

Power Output: DC12V 3A  
Net Weight: 5.5kg  
Total Weight: 6.2kg  
Cavity Size: 175x125x160mm  
Minimum Cleaning Size:  $\geq 14$ mm

## Product Description



## Packing List



user manual  $\times 1$



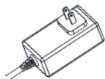
seal box  $\times 1$



shelf board  $\times 1$



water pipe  $\times 2$



power adapter  $\times 1$

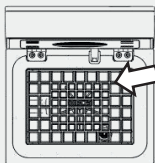
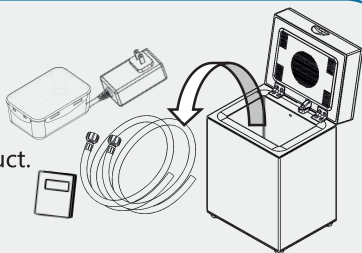
The cleaning agents container is not included in the package. Using a  $\geq 4$ L transparent bottle with a mouth diameter  $\geq 30$ mm is recommended.



# Installation Instructions

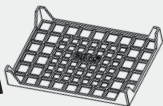
①

Remove the accessories from internal of the product.



②

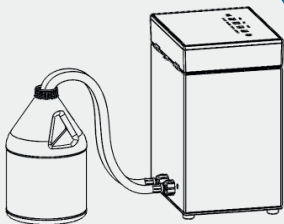
Install the shelf board into the sink (factory installed).



③ Install the water inlet and outlet ,the other end into the bottom of the cleaning agents container.

Take care to prevent cleaning agents containers from tipping.

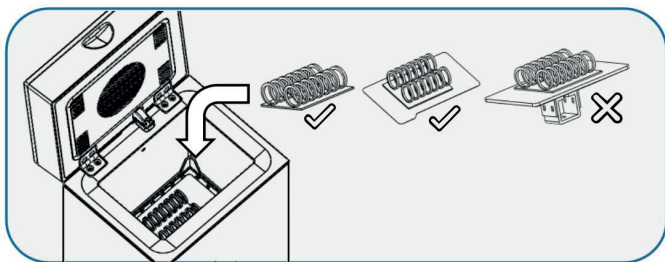
The cleaning agents container is not included in the package.



# Method of Operation

1. Place the printed resin model in the sink. It is not recommended to put the printer platform into the sink. Otherwise, the platform easily turns white.

The mesh size of the shelf board is 14mm. Do not clean the model smaller than 14mm. Otherwise, it will fall into the cleaning component.



2. Plug in power, the ON/OFF Button flashes, and the device is in a standby state.
3. Close the cover, turn it on, and the panel will light up.



L M H



## 【Water Level】

---

Press the Water Level button to switch to the appropriate water level according to the model height. Press the water level button for 8 seconds to forcibly drain the water.

4 8 12



## 【Washing】

---

Press the Wash button to set up the washing duration. The light off means turning off this function.

" 4" means 2 cycles, 2 mins for each;

" 8" means 2 cycles, 4 mins for each;

"12" means 3 cycles, 4 mins for each;

12 15 18



## 【Drying】

---

Press the Dry button to set up the air-dry duration. The light off means turning off this function. If unsure about the drying time, you can open the cover to observe whether the model is dry.

2 4 6



## 【Curing】

---

Press the Cure button to switch the curing duration. The light off means turning off this function.

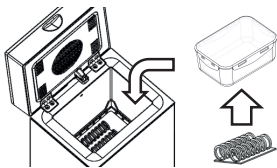
---

After setting each function, press the start button, and the unit will start to work. The corresponding function light button will flash when the unit runs, and you can press the start/pause button to pause or continue.

The device will pause when opening the cover during working. And the internal buzzer of the device will prompt. The device will continue when the cover is closed.

## Recycling of cleaning fluid

A lot of resin will dissolve into the cleaning fluid after cleaning. It will reduce the cleaning effect. These methods are recommended to increase the times of cleaning fluid can be used:



1. After taking out the printing model from the printer, simply soak the model with turbid cleaning fluid. It can remove most of the resin on the surface of the printing model. And then put it in the device for automatic cleaning. You can use the

sealed box in the package or other container as a pre-cleaning box. 2 pre-cleaning boxes in sequence for better effect.

2. If the cleaning fluid has been turbid, pour the upper layer of cleaning fluid into other clean containers after standing for 10 hours slowly.

## Maintenance

1. Please drain the internal cleaning fluid to avoid long-term soaking inside the device after use. And cover the cleaning fluid bottle to avoid volatilization.

2. Please double-check whether there is resin debris or other sundries in the bottom of the sink each time using the unit. The dirt must be cleaned out before it can be used.

3. Regularly check and clean the filters inside the water pipes and the filters inside the sink.



# Troubleshooting

---

## **1. The printing model turns white after curing**

*a.* The cleaning fluid is too turbid. Please change to a clean cleaning fluid or follow the previous page <Recycling of cleaning fluid>.

*b.* The printing model is too complicated or placed in a poor position causing the model to not dry completely. It is recommended to increase the drying time for complicated printing models. In addition, please face up the surface of the printing model that is not easy to dry and tilt the model appropriately to avoid storing a lot of cleaning fluid in the groove of the printing model.

## **2. The water level button flashes, and the buzzer alarms**

Check that the cleaning fluid is sufficient and check that the water inlet pipe is correctly placed in the cleaning fluid

## **3. All button lights flash, and buzzer alarms**

The high-level sensor detects a signal. Wipe the inside of the cover after turning off the power.

## **4. Drain pump is working after pressing the start button.**

*a.* The device will drain the internal cleaning fluid before proceeding with the normal process

*b.* There are too many cleaning fluid drops inside the device (especially low water level). Please wipe and clean the internal guts wall.

## After-sales Service Card

Shenzhen EIBOS Chuanggou Tech Co., Ltd

Username	
Contact number	
Address	
Product Model	
Production Number	
Invoice Number	
Distributor	

- As a product warranty certificate, the customer should keep this card. Do not change anything on this card.
- From the date of purchasing, if any non-artificial malfunctions occur, this product can be returned within 7 days and changed within 15 days, with 1 year paid warranty.
- Malfunctions or damages caused by self-disassembly, improper use, or other personal reasons are not included in the warranty.
- Support email: [support@EIBOS3D.com](mailto:support@EIBOS3D.com)



