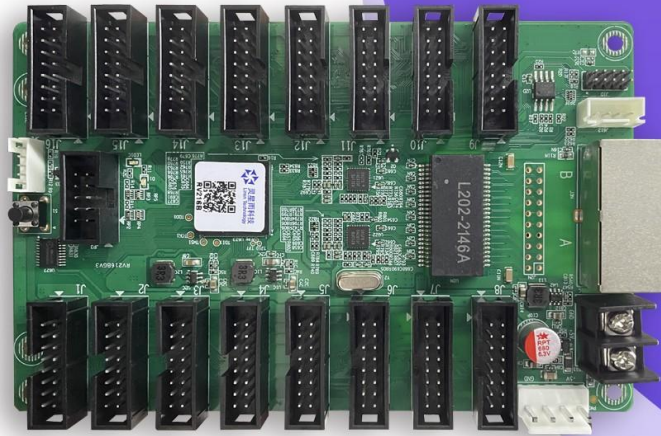




Linsn Technology

Buy website address: <https://reissopto-led.com/products/linsn-technology-rv216b-receiving-card-led-display>



RV216B Receiver Specifications

V3.0

Revision History

Document Version	Hardware Version	Revision Date	Note
V3.0	V2	2022/1	New edition

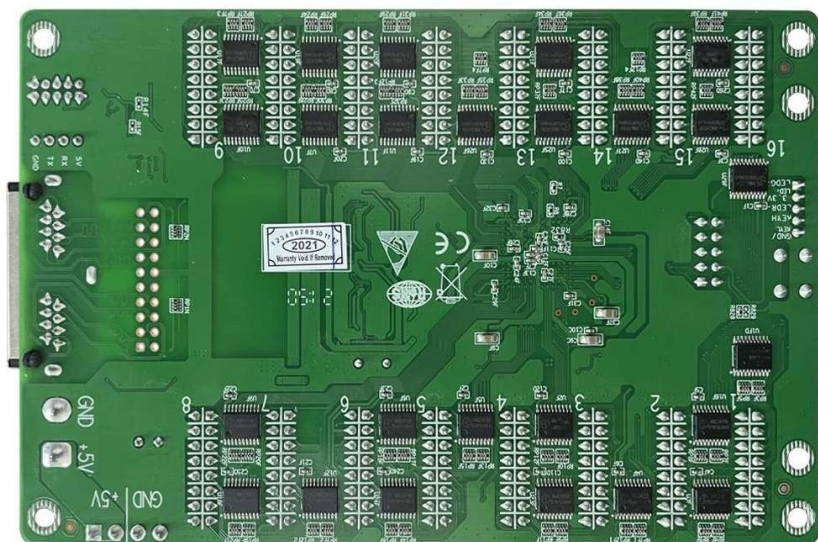
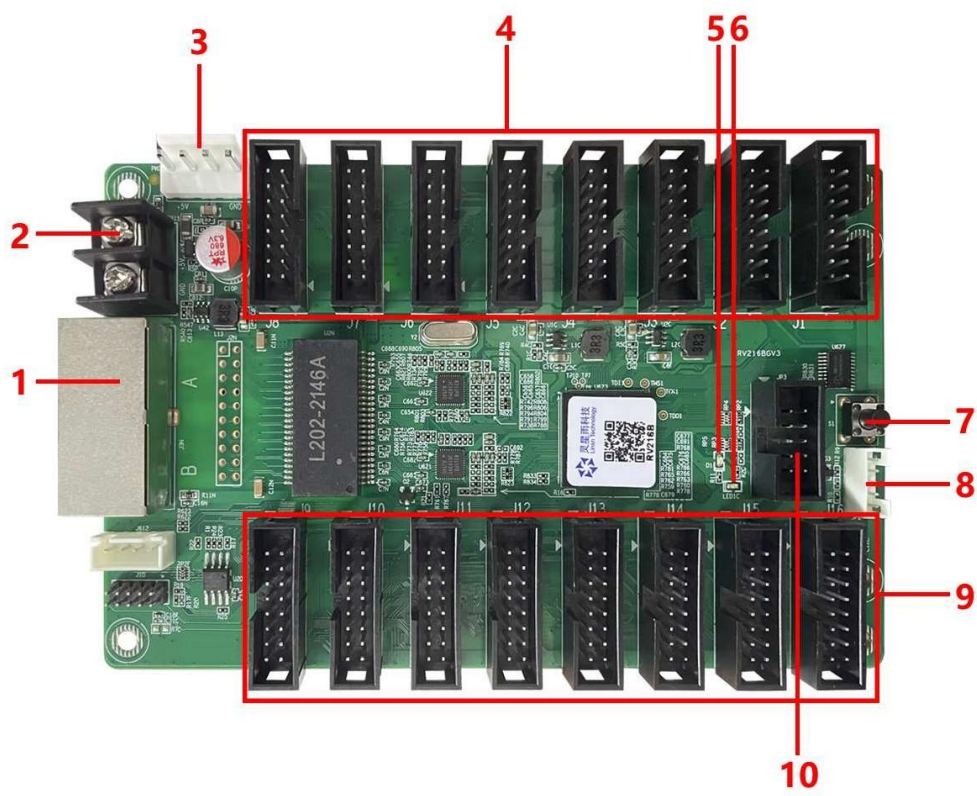
Overview

RV216B is a standardize product for LED screen manufacturer, which is integrated with 16 standard hub75-type connectors and does not require an extra hub card. One card supports up to 512*512pixels and up to 32 sets of RCG data.

Functions and features

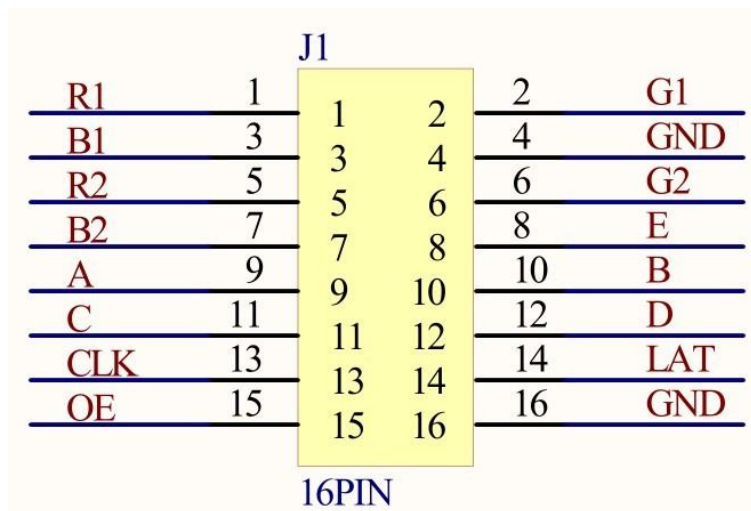
1. Single card can support 32 group of RGB data output mode
2. Maximum supports 512X512(Please note that there are recommended values depending on the design of LED screen pixels)
3. Supports brightness calibration pixel by pixel and single-card color space conversion
4. Supports configuration file read back
5. Supports 138 decode, 595 serial decode and so on
6. Realizes high refresh and high gray level effect
7. Dual card backup

Appearance



No.	1	2	3	4/9
Description	Gigabit network port	Power connector	Power port	Hub75 Connector
No.	5	6	7	8
Description	Green indicator	Red power indicator	Self-test button	Self-test extension port
No.	10			
Description	Backup port			

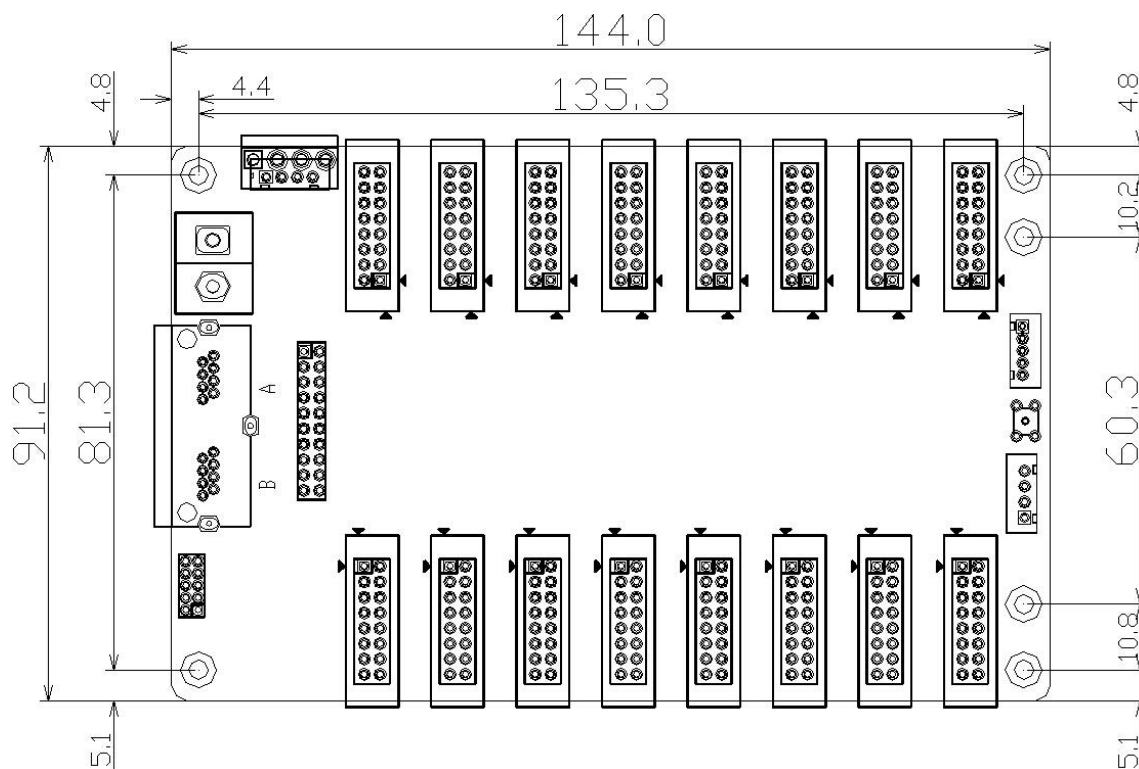
Pinouts



/	R1	1	2	G1	/
/	B1	3	4	GND	GND
/	R2	5	6	G2	/
/	B2	7	8	E	Row selection signal
Row selection signal	A	9	10	B	Row selection signal

Row selection signal	C	11	12	D	Row selection signal
Scan clock	CLK	13	14	LAT	Latch
Display enable	OE	15	16	GND	GND

Dimension



Specifications

Capacity	512X512 Pixels	
Power	Input Voltage	DC3.8V ~ 5.5V
	Rated power consumption	3.5W
Working	Temperature	-20°C ~ 70°C
Environment	Humidity	0% ~ 95%
Physical	Dimensions	144.0 X 91.2mm
Dimensions	Weight	110g
Packing Info	Packing	Each card packed with small red foam bag, and 100pcs per carton
	Carton Dimension	622.0mm × 465.0mm × 176.0mm
	Carton Weight	13.8 kg

END