

Buy website address: <https://reissopto-led.com/products/huidu-hd-b6-advertising-machine-splicing-special-control-card>



Product Specifications

Dual-mode Control Card

HD-B6

V1.0 20200514

1. System Overview

HD-B6, it is an LED control system for remote control and offline HD video playback for small-pitch LED advertising screens. Including asynchronous sending box HD-B6, receiving card R50X and control software HDPlayer three parts.

HD-B6 supports multi-card HDMI connected for splicing, which can realize multi-card adaptive splicing, single-card independent control and other modes, a product tailored for advertising machines and mirror screens.

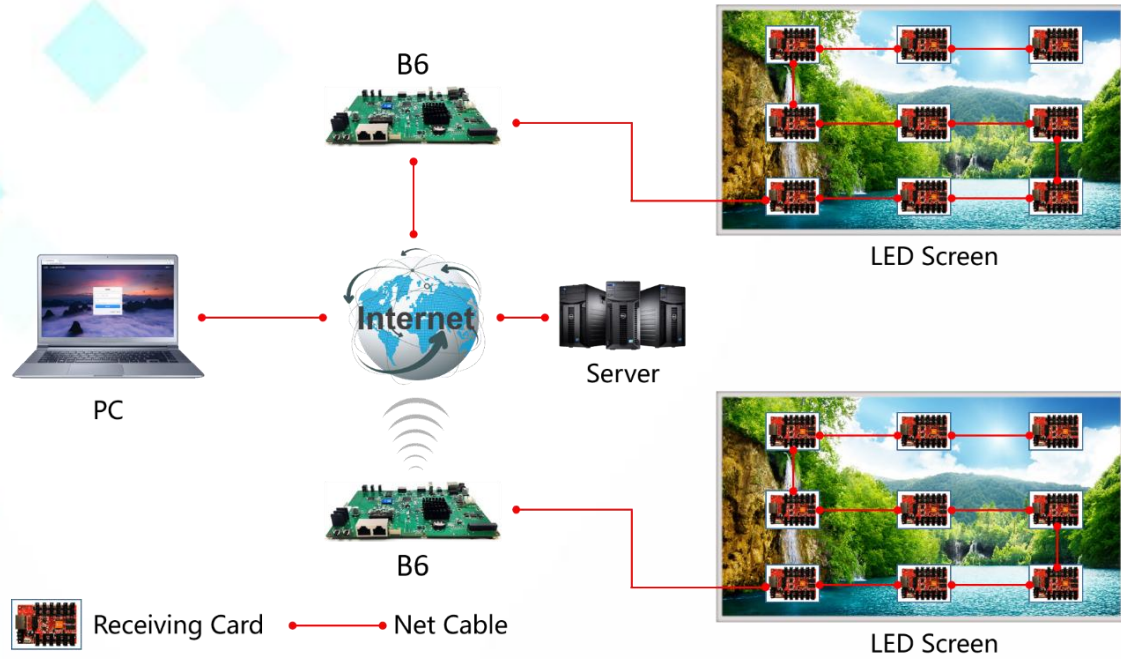
The user completes the parameter setting and program editing and transmission of the display through HDPlayer

2. Controlling System Configuration

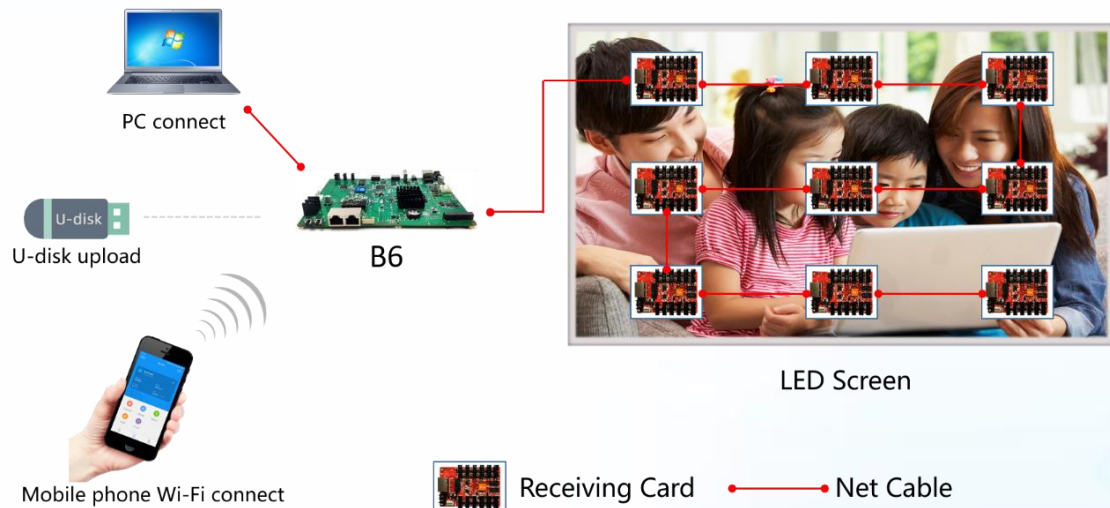
Product	Type	Functions
Dual-mode LED display player	HD-B6	Asynchronous core parts It has 8GB memory.
Receiving card	R Series	Connected the screen, Showing programs in the screen
Control Software	HDPlayer	Screen parameter settings, editing the program, send program, etc.
Accessories		Network cables, HDMI Cable. etc.

3. Control Mode

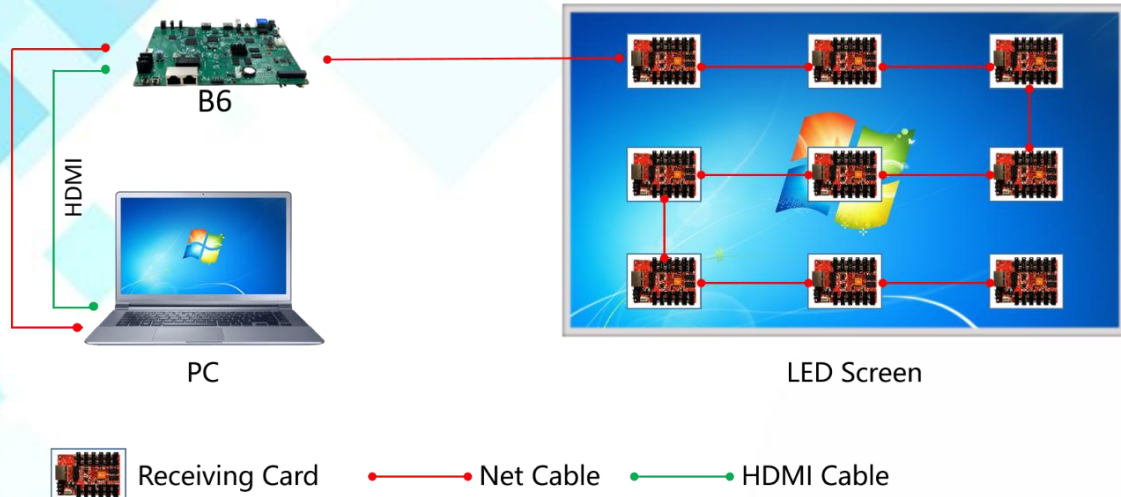
Internet unified management: The play box can be connected to the Internet through 4G (optional), network cable connection, or Wi-Fi Bridge.



2. Asynchronous one-to-one control: Update programs by network cable connections, Wi-Fi connections or USB flash drives. LAN (cluster) control can access the LAN network through by network cable connection or Wi-Fi Bridge.



3. Real-time picture synchronization display: The play box is connected to the sync source through the HDMI high-definition video line, and the sync picture is automatically scaled without any setting.



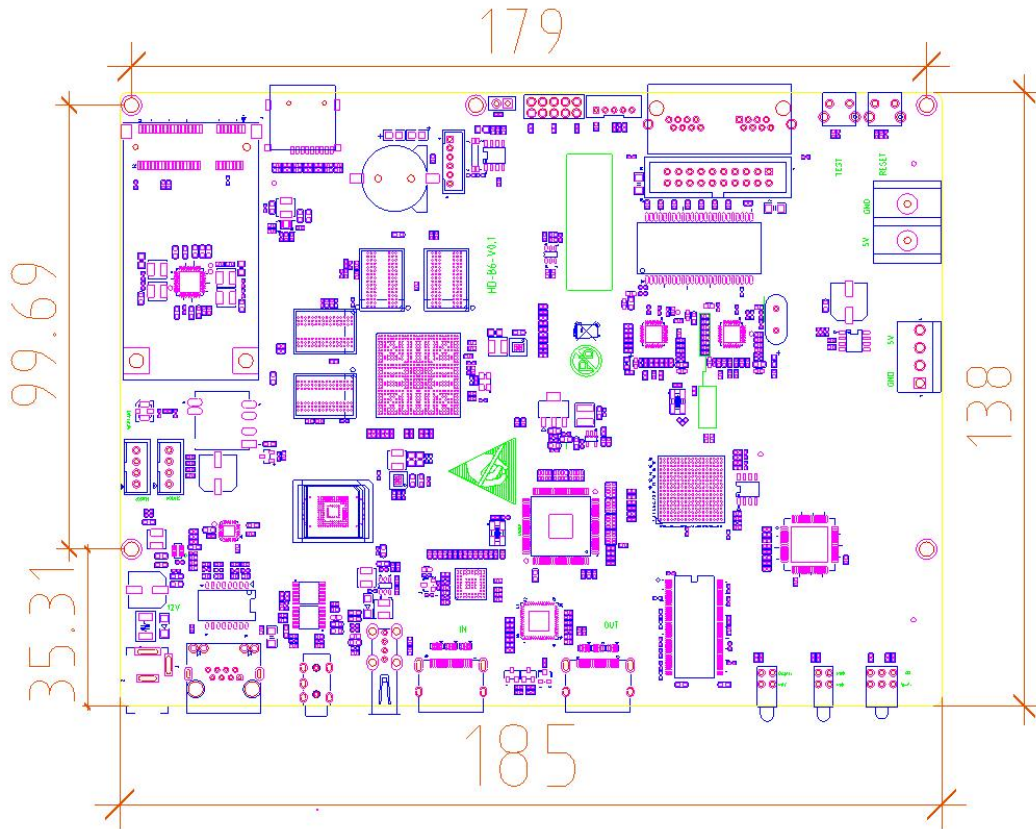
4. Product Features

- Control rang: 1.30 million pixels, Support HDMI multiple card splicing up to 2.3 million (1920*1200)pixel;
- Support Asynchronous & Synchronous display.
- Support HDMI automatic zooming function;
- HDMI LOOP, Support multiple B6 stitching;
- One B6 control card support widest 3840 pixel, highest 2048 pixel.
- 8GB memory, support expending memory by U-disk,
- Support HD video decoding, 60Hz frame rate output
- No need set IP address, it could be identified by controller ID automatically
- Unified management of more LED display through Internet or LAN.
- Equipped with Wi-Fi, Mobile APP management.
- Equipped 3.5mm standard audio interface output.

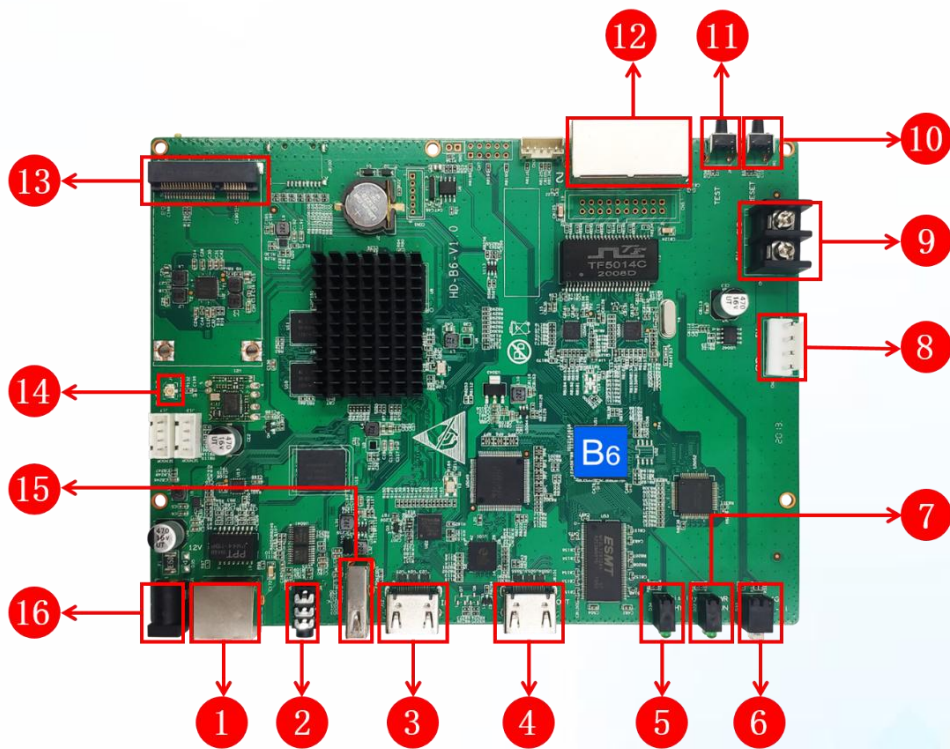
5. System Function List

Module Type	Compatible with indoor and outdoor full color and single color module Support conventional chip and mainstream PWM chip
Scan Mode	Static to 1/64 scan mode
Control Range	One B6 control range: 1.3 million pixel, widest 3840, highest 2048; HDMI multiple B6 splicing control range: 2.3 million pixel, widest 3840, highest 4096.
Gray Scale	256-65536 (adjustable)
Basic Functions	Video, Pictures, Gif, Text, Office, Clocks, Timing, etc. Remote, Temperature, Humidity, Brightness, PM Value, etc. Support Synchronized picture auto-zooming, Playing live screen without video processor.
Video Format	HD video hard decoding, 60Hz frame rate output. AVI, WMV, RMVB, MP4, 3GP, ASF, MPG, FLV, F4V, MKV, MOV, DAT, VOB, TRP, TS, WEBM, etc.
Image Format	Support BMP, GIF, JPG, JPEG, PNG, PBM, PGM, PPM, XPM, XBM, etc.
Text	Text editing, Image, Word, Txt, Rtf, Html, etc.
Document	DOC, DOCX, XLSX, XLS, PPT, PPTX, etc. Office2007 Document format
Time	Classic Analog Clock, digital clock and various of clock with image background
Audio output	Double track stereo audio output
Memory	8GB Flash Memory, Expanding memory by U-disk
Communication	100M/1000M RJ45 Ethernet, Wi-Fi, 3G/4G, LAN, USB
Working Temp	-40°C-80°C
Port	IN: 12V Power Adapter*1, 1Gbps RJ45*1, USB 2.0*1, Test Button*1, GPS, 4G(Optional), Sensor port*1, HDMI*1 OUT: 1Gbps RJ45*1, AUDIO*1, HDMI*1
Power	18W

6. Dimension Chart



7. Appearance Description



1. Input network port, connected to the computer network port.

2. Audio output port: standard two-channel stereo output
3. HDMI Input port: Video Signal Input, Connecting Computer, Set Top Box, etc, when splicing, it is connected to the HDMI output port of the previous B6.
4. HDMI output port: can be connected to the LCD display, When splicing, it is connected to the HDMI input port of the next B6.
5. Screen Display light: showing the programs status of the display,
6. 4G and Wi-Fi light: For showing 4G/ Wi-Fi working status.
7. Power and running light: The (PWR) light is always on when the power is turned on, and (RUN) light is flashing.
8. 5V Power interface: Connect 5V DC power supply power to the control card;
9. 5V Power interface: Connect 5V DC power supply power to the control card
10. Reset button: Used to restore default parameter values.
11. Test button: for test module.
12. Output Network Port: Connect to Receiving Card
13. PCIE Port: For insert 4G module,
14. External antenna interface: Connect the antenna to enhance Wi-Fi signal,
15. USB port: Connecting USB devices, such as: U disk, mobile hard disk, etc.
16. Power port, connect to 12V DC.

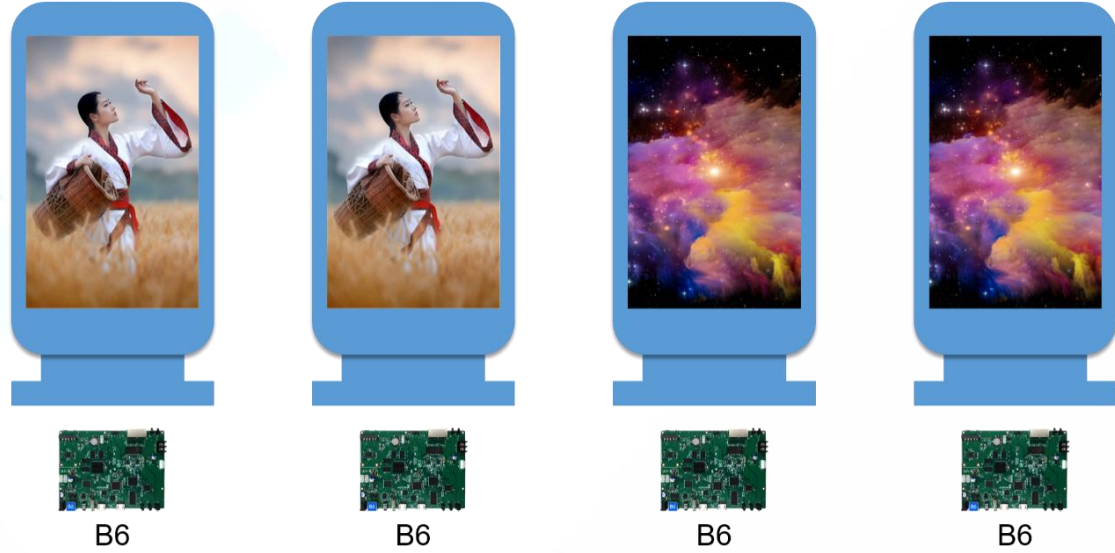
8. Basic Parameters

	Minimum	Typical	Maximum
Rated voltage(V)	11.2	12	12.5
Storage temperature(°C)	-40	25	105
Work environment temperature(°C)	-40	25	80
Work environment humidity (%)	0.0	30	95
Net weight (kg)			
Certificate	CE, FCC, RoHS		

9. Advertising Screen Application

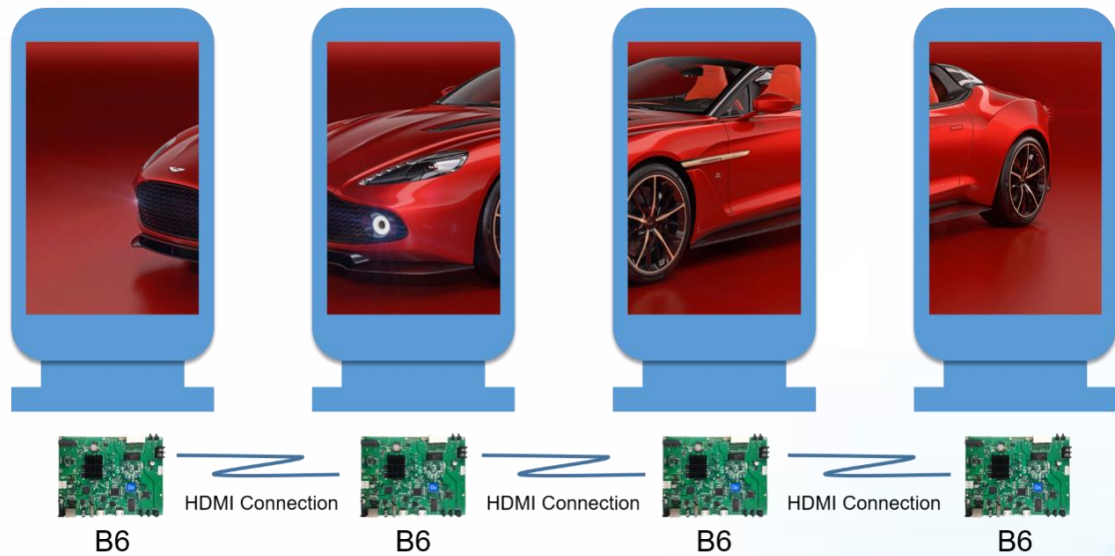
1. Play independently

Each display screen is independent and plays independently without interfering with each other.



2. Multi-screen splicing to play one program

With HDMI high-definition cable connected to put the contents of multiple display screens into a whole picture.



10. Product appearance



