

HOME
DECORATORS
COLLECTION

KITCHEN & BATH CABINETS

Semi Custom | Ships in 7-10 Days

METROPOLITAN
SERIES

**EXCITING NEW PRODUCTS
FOR FALL OF 2023 SEE DETAILS INSIDE**

*High Gloss White with
High Gloss Metallic*



SPECIFICATION GUIDE

Ships in 7-10 Days | Plywood Cabinetry | Soft Close Doors & Drawers
Factory Built in the USA | Limited Lifetime Warranty

For use with 20/20 catalogs: HMDEC_MT, HMDEC_M2

HDCKitchens.com 866-373-9131

HDCKitchens.com



HomerDesignTools.com

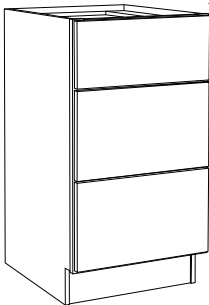


Exclusively at



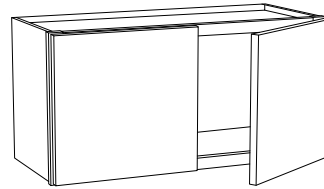
EXCITING NEW PRODUCTS FOR FALL OF 2023

To enable you to design even more beautiful and functional spaces here are a few highlights introducing our Fall 2023 new releases.



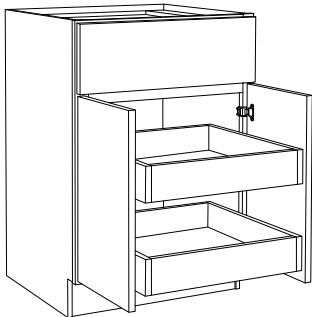
We've added more Base Drawer sizes to give you greater flexibility in your designs. Now available in 21" and 27" widths.

See details starting on page 19

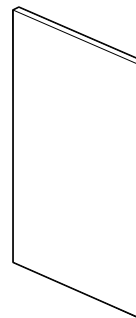


We've added additional bridge and standard Wall Cabinet sizes to better accommodate unique appliance sizes.

See details starting on page 5



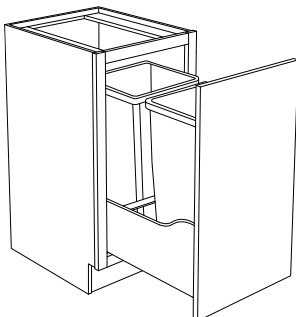
We have upgraded ALL of our roll-out trays to now have full extension, smooth gliding runners with soft close operation.



For luxury finishing touches check out our full line of:

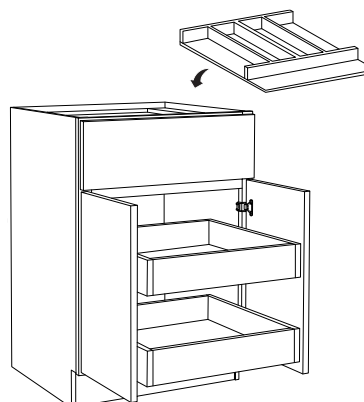
- Replacement door and drawer fronts
- Decorative Panels
- Wainscot

See details starting on page 42



We've upgraded our Wastebasket Base Cabinets with higher capacity trash cans and full extension, soft close runners.

See details starting on page 18



You can now order base cabinets with built in accessories including:

- Utensil Trays
- Cutlery Trays
- Spice Trays
- Knife Blocks

See details starting on page 16

Please Note:

Throughout this Specification Book you will find our new Fall products highlighted in **YELLOW** for easy identification.

For any questions please call, 866-373-9131.

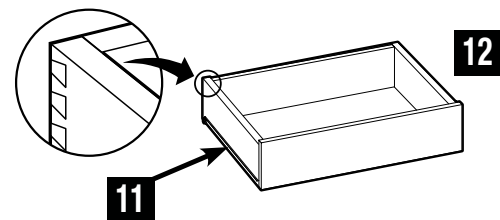
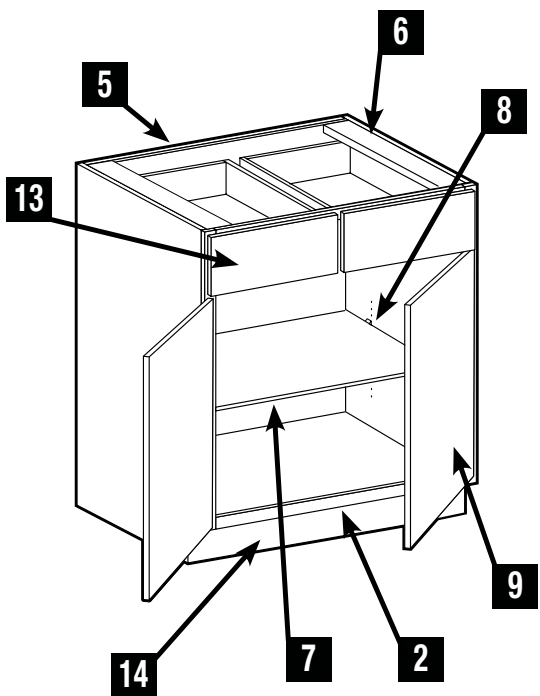
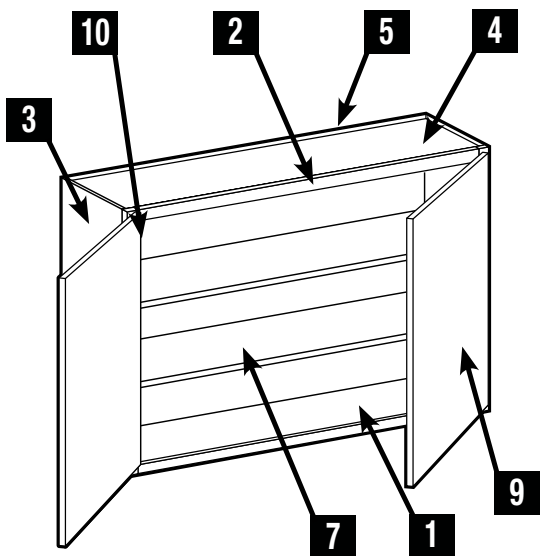
Table of Contents



Cabinet Construction	2
Door Styles.....	3
Customizing Options.....	4
Wall Cabinets & Cover Panels.....	5-12
Base Cabinets & Cover Panels	13-23
Tall Cabinets & Cover Panels	24-27
Vanity Cabinets.....	28-30
Cover Panels ..	31-32
Accessories	33-36
Decorative Hardware.....	37-38
Cabinet Frame & Opening Dimensions	39-41
Decorative & Replacement Door and Drawer Fronts	42-44

PLEASE NOTE: Line drawings are artistic representations of products for general dimensioning purposes. These should not be relied upon for accurate product appearance. Please consult the website or a designer if you have any questions or specific design requirements. Photography is for illustration purposes. Actual colors may vary slightly due to the printing process. We recommend ordering a sample door to see the color and finish you like for yourself.

Standard Cabinet Construction



1	INTERIOR	Natural birch vinyl laminate provides a durable, wipe clean finish.
2	FACE FRAME	1½" wide x ¾" thick painted solid hardwood, pocket screwed
3	END PANELS	½" thick CARB2 plywood, exterior vinyl laminate is color matched to face frame.
4	FLOOR & CEILING	½" thick CARB2 plywood, both sides captured by end panels.
5	BACK PANELS	½" thick CARB2 plywood with natural birch vinyl laminate interior and raw exterior. The 'clipped' back panels on Wall Angle and Easy Reach Corner cabinets will be ¼".
6	"I-BEAM" SUPPORTS	½" thick CARB2 plywood, full depth braces provide stability and support for countertop attachment.
7	ADJUSTABLE SHELVES	¾" thick CARB2 plywood with natural birch vinyl laminate both sides with matching edgebanding. Base and wall adjustable shelves are full depth.
8	SHELF SUPPORTS	Clear, high strength plastic with locking top tab to prevent shelf tip. Provides easy shelf adjustment.
9	DOORS	Contemporary, full-overlay doors available in a durable melamine finish.
10	HINGES	Fully concealed 110° opening Soft Close hinges with 6-way adjustment for ease of alignment.
11	RUNNERS	Drawers and Roll-Out Trays feature smooth glide, full extension, soft close, under mounted runners that engage when 1" from closed. Runners are rated for 90 lb. dynamic loads.
12	DRAWERS & ROLL-OUT TRAYS	5/8" thick finger jointed hardwood four sided dovetail box construction, finished with a clear topcoat and a ¼" thick captured plywood floor.
13	DRAWER FRONTS	Contemporary, full-overlay drawers available in a durable melamine finish. The top drawer front is 8" high & the bottom two drawer fronts are 10 ½" high.
14	INTEGRAL TOE KICK	½" thick plywood secured between end panels. Provides solid backing for installation of Toe Kick Filler Strip (TKFS8) or other materials such as ceramic, vinyl, etc.



Member
NKBA

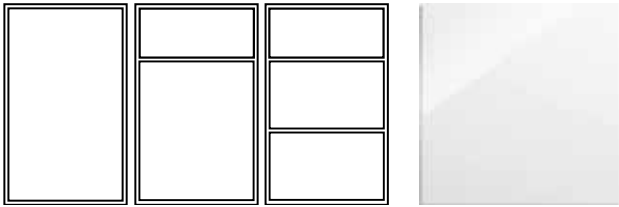


CARB2
compliant

Specifications subject to change without notice.

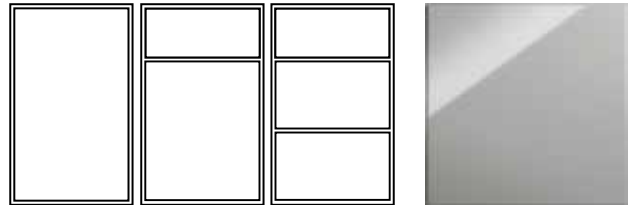
Flat Panel Door Styles

Midtown High Gloss White (MHW)



- 3/4" thick melamine faced MDF with scratch resistant high gloss lacquer finish
 - 2x as scratch resistant as thermofoil (PVC/PET)
 - 6x more scratch resistant than acrylic
- Full Overlay door style, on a solid hardwood face frame
- Edges sealed with color-matched PVC edge banding
- Doors are mounted on a white painted face frame
- 6-way adjustable, soft-close concealed hinges
- Decorative hardware required

Midtown High Gloss Metallic (MHM)



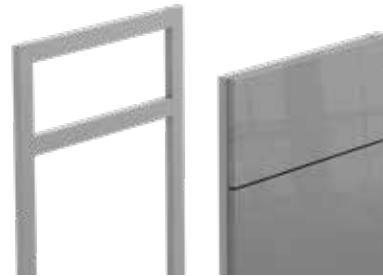
- 3/4" thick melamine faced MDF with scratch resistant high gloss lacquer finish
 - 2x as scratch resistant as thermofoil (PVC/PET)
 - 6x more scratch resistant than acrylic
- Full Overlay door style, on a solid hardwood face frame
- Edges sealed with color-matched PVC edge banding
- Doors are mounted on a gray painted face frame
- 6-way adjustable, soft-close concealed hinges
- Decorative hardware required

FACE FRAMES AND DOOR FINISHES

Our modern Metro cabinetry has the European look with traditional craftsmanship. The streamlined doors will come on a semi-custom built box with a face frame in one of two complimentary colors.



White Face Frame



Gray Face Frame

FINISHED ENDS OPTIONS



1. **Cabinet box sides** are manufactured to color match the cabinet's face frame.

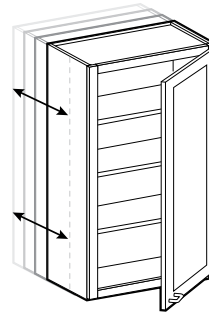


2. **Cover Panels** are 3/4" thick and will match the doors/drawers. Cover Panels are 1" wider and are designed to align flush with the front of the door/drawer and create the look of an inset doorstyle. They are available for base, wall, and tall cabinets and can be found on pages 31-32. Cover Panels must be ordered separately for field modification and installation.

Customizing Options

CUSTOM DEPTH

CABINET TYPE	CUSTOM DEPTH MIN-MAX
12" DEEP WALL	5" to 15"
24" DEEP WALL	16" to 23"
STANDARD BASE	9" to 23"
BASE DRAWER*	15" to 23"
TALL UTILITY/LINEN	9" to 23"



- Available on standard cabinet types in 1" depth increments

* Base cabinets with drawers that are customized from 15" to 23" deep will include working drawers. 9" to 14" deep cabinets will have no drawer and a false drawer front.

* Design and Order Tip: If a cabinet needs to be a custom depth, the depth modification needs to be done before the cabinet order is placed. This modification can be done in 2020 design or in the shopping cart on the website.



The use of full height base cabinets and drawer stacks will help the kitchen to achieve the true metropolitan look. Use the full height cabinets as sink bases, cooktop bases and more!



Using cover panels on the sides, top and bottom of the wall cabinet and waterfall countertops on the base cabinets will create an inset door look in your new kitchen. Using horizontal hardware placement completes the look!



Give the kitchen a true metropolitan look by combining full height doors and drawer bases, versus standard drawer and door cabinets. Also simply installing the hardware horizontally on all cabinets can complete the look!

WALL CABINET CODING

STANDARD (12" DEEP)

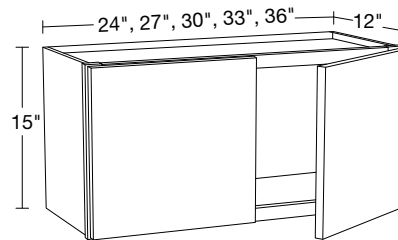
W	30	30
Cabinet Code	Cabinet Width	Cabinet Height

REFRIGERATOR (24" DEEP)

W	36	24	18
Cabinet Code	Cabinet Width	Cabinet Depth	Cabinet Height

- All wall cabinets are 12" deep unless otherwise noted. Actual height of 24" high cabinets is 23½" overall. Refrigerator wall cabinets are 24" deep.
- Cabinet depth does not include door thickness
- Products are available in all door styles unless stated otherwise
- Standard cabinet exterior sides are color matched to face frame
- Soft close hinges unless stated otherwise

15" High Double Door



W2415

W2715

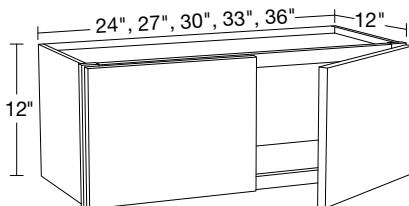
W3015

W3315

W3615

- No adjustable shelf
- **CUSTOM DEPTH: 5" to 15" deep**

12" High Double Door



W2412

W2712

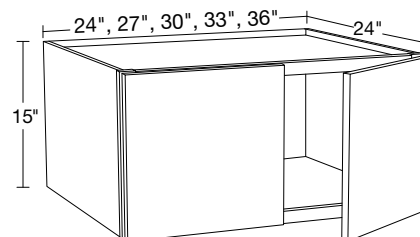
W3012

W3312

W3612

- No adjustable shelf
- **CUSTOM DEPTH: 5" to 15" deep**

15" High x 24" Deep Double Door



W242415

W272415

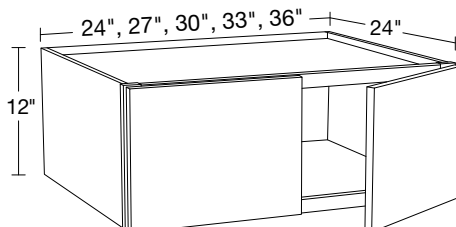
W302415

W332415

W362415

- No adjustable shelf
- Must be supported from back and both sides
- **CUSTOM DEPTH: 16" to 23" deep**

12" High x 24" Deep Double Door



W242412

W272412

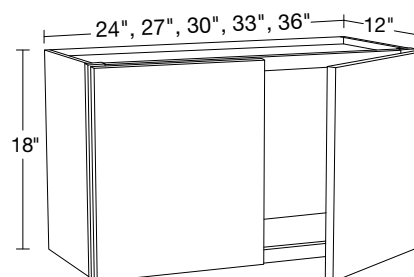
W302412

W332412

W362412

- No adjustable shelf
- Must be supported from back and both sides
- **CUSTOM DEPTH: 16" to 23" deep**

18" High Double Door



W2418

W2718

W3018

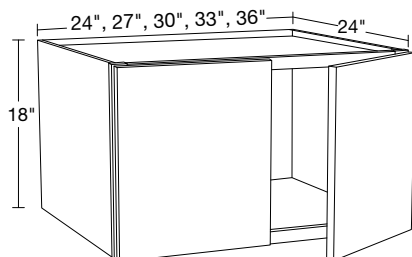
W3318

W3618

- No adjustable shelf
- **CUSTOM DEPTH: 5" to 15" deep**

Wall Cabinets

18" High x 24" Deep Double Door



W242418

W272418

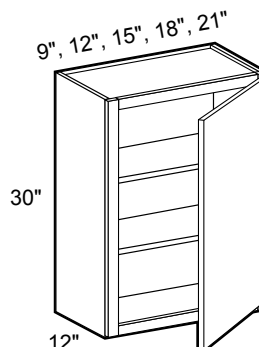
W302418

W332418

W362418

- No adjustable shelf
- Must be supported from back and both sides
- **CUSTOM DEPTH: 16" to 23" deep**

30" High Single Door



**SPECIFY
RIGHT or LEFT HINGED**

W0930

W1230

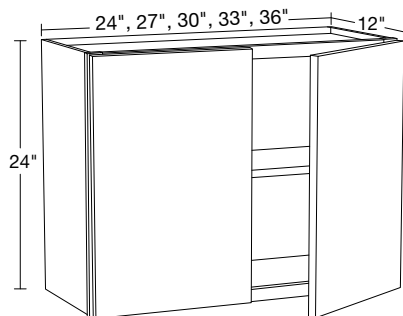
W1530

W1830

W2130

- Two adjustable shelves
- **CUSTOM DEPTH: 5" to 15" deep**

24" High Double Door



W2424

W2724

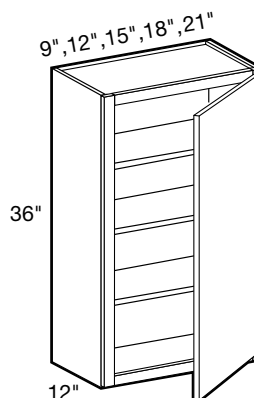
W3024

W3324

W3624

- One adjustable shelf
- **CUSTOM DEPTH: 5" to 15" deep**

36" High Single Door



**SPECIFY
RIGHT or LEFT HINGED**

W0936

W1236

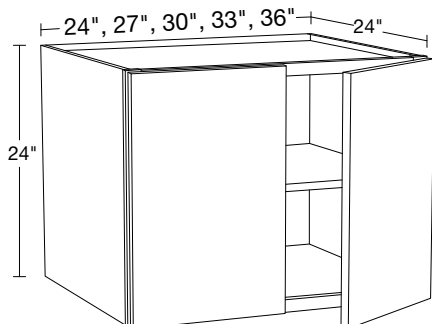
W1536

W1836

W2136

- Three adjustable shelves
- **CUSTOM DEPTH: 5" to 15" deep**

24" High x 24" Deep Double Door



W242424

W272424

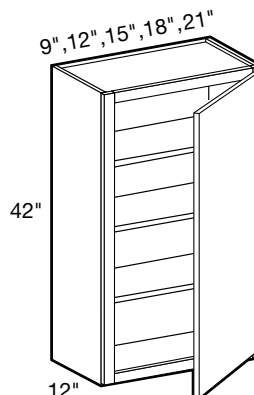
W302424

W332424

W362424

- One adjustable shelf
- Must be supported from back and both sides
- **CUSTOM DEPTH: 16" to 23" deep**

42" High Single Door



**SPECIFY
RIGHT or LEFT HINGED**

W0942

W1242

W1542

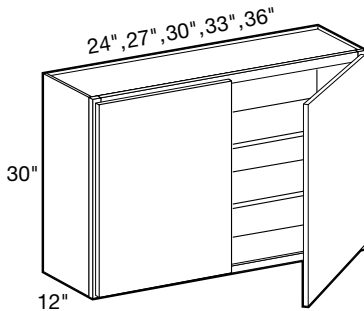
W1842

W2142

- Three adjustable shelves
- **CUSTOM DEPTH: 5" to 15" deep**

Wall Cabinets

30" High Double Door



- Two adjustable shelves
- **CUSTOM DEPTH:** 5" to 15" deep



**CUSTOM
DEPTH**

W2430

W2730

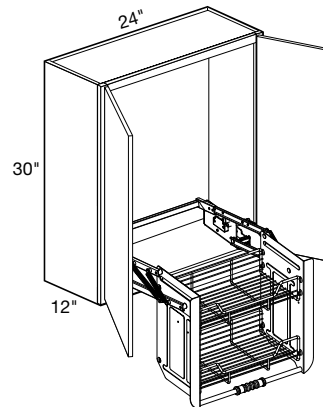
W3030

W3330

W3630

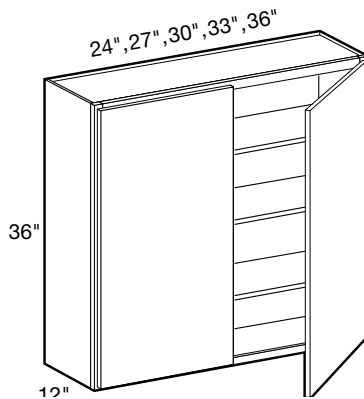
30" High Double Door with Pull Down Chrome Shelves

W2430-PDSCR



- Field install at desired height in cabinet
- Two tier chrome shelves lowers 10" and brings items forward 14 $\frac{3}{4}$ "
- Gas assisted mechanism smoothly raises and lowers unit
- Locking arm feature holds shelf in down position

36" High Double Door



- Three adjustable shelves
- **CUSTOM DEPTH:** 5" to 15" deep



**CUSTOM
DEPTH**

W2436

W2736

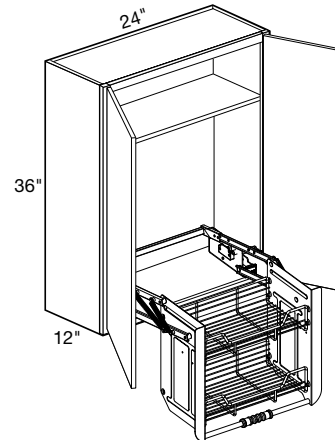
W3036

W3336

W3636

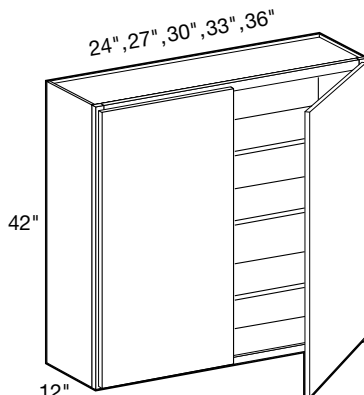
36" High Double Door with Pull Down Chrome Shelves

W2436-PDSCR



- Field install at desired height in cabinet
- Two tier chrome shelves lowers 10" and brings items forward 14 $\frac{3}{4}$ "
- Gas assisted mechanism smoothly raises and lowers unit
- Locking arm feature holds shelf in down position

42" High Double Door



- Three adjustable shelves
- **CUSTOM DEPTH:** 5" to 15" deep



**CUSTOM
DEPTH**

W2442

W2742

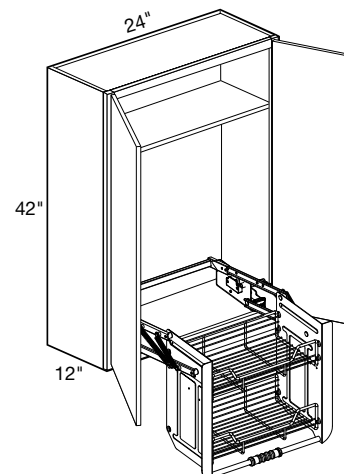
W3042

W3342

W3642

42" High Double Door with Pull Down Chrome Shelves

W2442-PDSCR

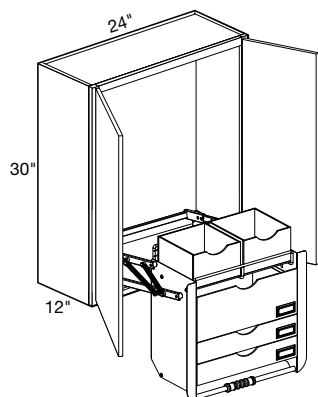


- Field install at desired height in cabinet
- Two tier chrome shelves lowers 10" and brings items forward 14 $\frac{3}{4}$ "
- Gas assisted mechanism smoothly raises and lowers unit
- Locking arm feature holds shelf in down position

Wall Cabinets

30" High Double Door with Pull Down Frosted Shelves

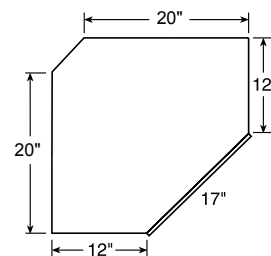
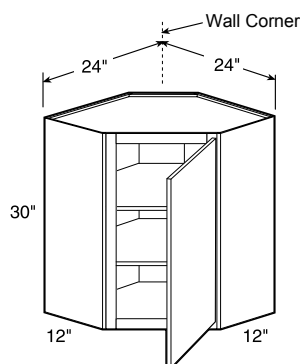
W2430-PDSFR



- Field install at desired height in cabinet
- Features 5 removable acrylic storage bins
- Lowers items 10" and brings forward 14 $\frac{3}{4}$ "
- Gas assisted mechanism smoothly raises and lowers unit

30" High Wall Angle

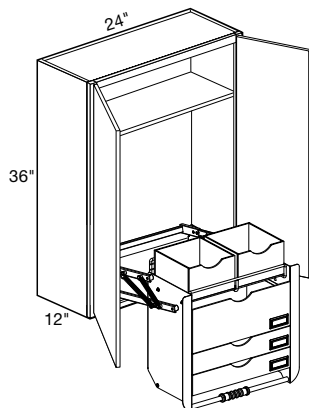
**SPECIFY
RIGHT or LEFT HINGED
WA2430**



- Two adjustable shelves
- Clip corner back provides clearance for installation

36" High Double Door with Pull Down Frosted Shelves

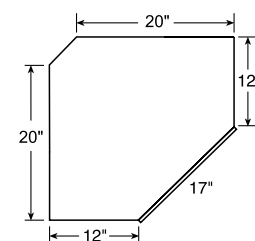
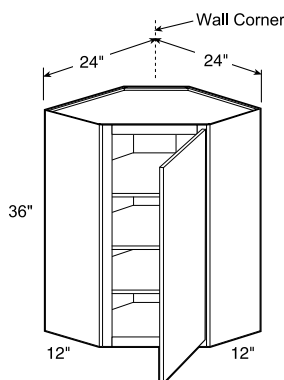
W2436-PDSFR



- Field install at desired height in cabinet
- Features 5 removable acrylic storage bins
- Lowers items 10" and brings forward 14 $\frac{3}{4}$ "
- Gas assisted mechanism smoothly raises and lowers unit

36" High Wall Angle

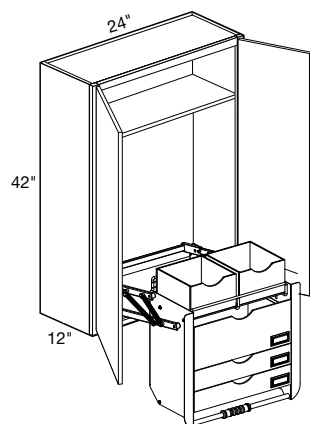
**SPECIFY
RIGHT or LEFT HINGED
WA2436**



- Three adjustable shelves
- Clip corner back provides clearance for installation

42" High Double Door with Pull Down Frosted Shelves

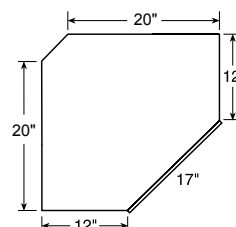
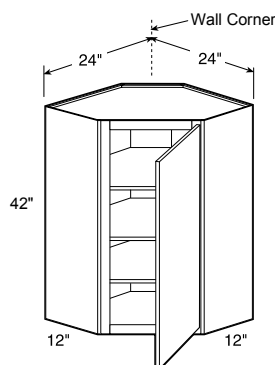
W2442-PDSFR



- Field install at desired height in cabinet
- Features 5 removable acrylic storage bins
- Lowers items 10" and brings forward 14 $\frac{3}{4}$ "
- Gas assisted mechanism smoothly raises and lowers unit

42" High Wall Angle

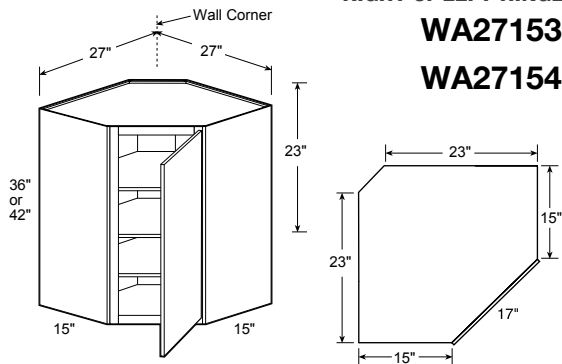
**SPECIFY
RIGHT or LEFT HINGED
WA2442**



- Three adjustable shelves
- Clip corner back provides clearance for installation

Wall Cabinets

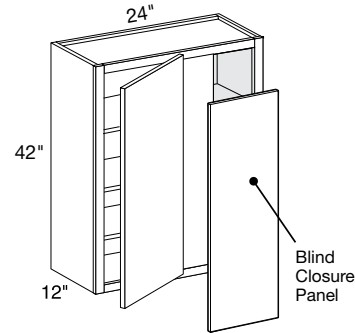
36" and 42" High x 15" Deep Wall Angle



SPECIFY
RIGHT or LEFT HINGED
WA271536
WA271542

- Three adjustable shelves
- Clip corner back provides clearance for installation

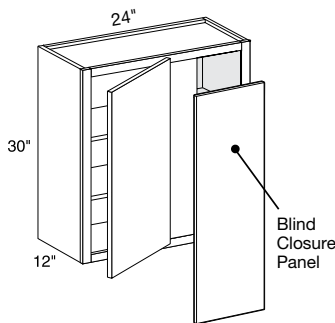
42" High Wall Blind Corner



CUSTOM DEPTH
SPECIFY
RIGHT or LEFT BLIND
WBCU2742

- Three adjustable shelves
- Indicate R or L for blind side (right shown)
- Cabinet can be pulled for exact fit (see installation guide)
- 3" color matched to face frame filler, 3" & 6" color matched to doors overlay fillers, and 3/16" blind closure panel included
- Door width is 11 3/4"
- **CUSTOM DEPTH: 5" to 15" deep**

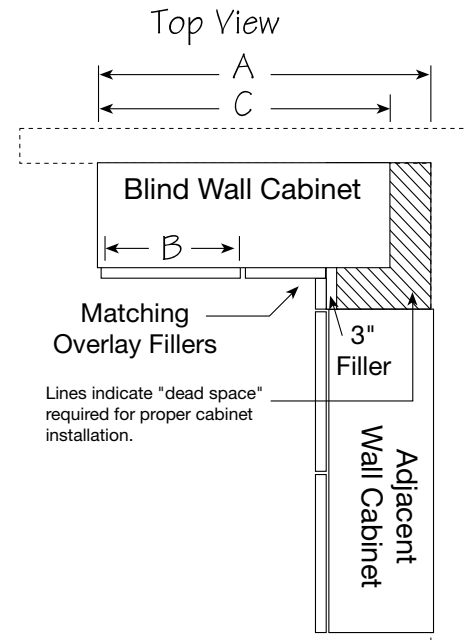
30" High Wall Blind Corner



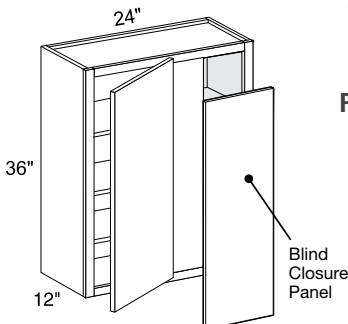
CUSTOM DEPTH
SPECIFY
RIGHT or LEFT BLIND
WBCU2730

- Two adjustable shelves
- Indicate R or L for blind side (right shown)
- Cabinet can be pulled for exact fit (see installation guide)
- 3" color matched to face frame filler, 3" & 6" color matched to doors overlay fillers, and 3/16" blind closure panel included
- Door width is 11 3/4"
- **CUSTOM DEPTH: 5" to 15" deep**

Blind Corner Installation Guide



36" High Wall Blind Corner



CUSTOM DEPTH
SPECIFY
RIGHT or LEFT BLIND
WBCU2736

- Three adjustable shelves
- Indicate R or L for blind side (right shown)
- Cabinet can be pulled for exact fit (see installation guide)
- 3" color matched to face frame filler, 3" & 6" color matched to doors overlay fillers, and 3/16" blind closure panel included
- Door width is 11 3/4"
- **CUSTOM DEPTH: 5" to 15" deep**

BLIND WALL INSTALLATION GUIDE			
Cabinet	Wall Space "A"	Frame Opening	Cabinet
	Min - Max	Width "B"	Width "C"
WBCU2730	25" - 30"	8 7/8"	24"
WBCU2736	25" - 30"	8 7/8"	24"
WBCU2742	25" - 30"	8 7/8"	24"

Wall Cabinets

12" High Uplift



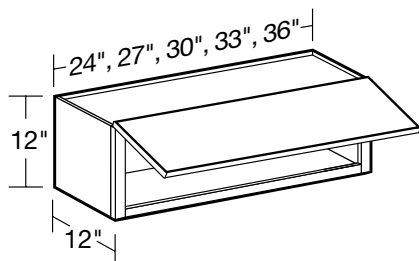
W2412UL

W2712UL

W3012UL

W3312UL

W3612UL



- No adjustable shelf
- **CUSTOM DEPTH: 5" to 15" deep**

15" High x 24" Deep Uplift

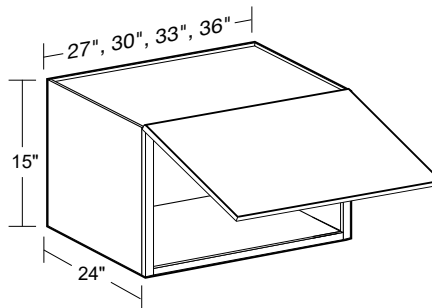


W272415UL

W302415UL

W332415UL

W362415UL



- No adjustable shelf
- Must be installed between two cabinets, cabinet and wall, or supported by CPVT's.
- **CUSTOM DEPTH: 16" to 23" deep**

12" High x 24" Deep Uplift



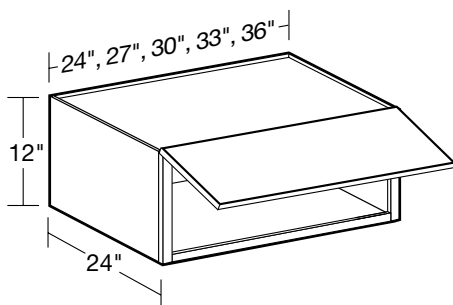
W242412UL

W272412UL

W302412UL

W332412UL

W362412UL



- No adjustable shelf
- Must be installed between two cabinets, cabinet and wall, or supported by CPVT's.
- **CUSTOM DEPTH: 16" to 23" deep**

18" High Uplift



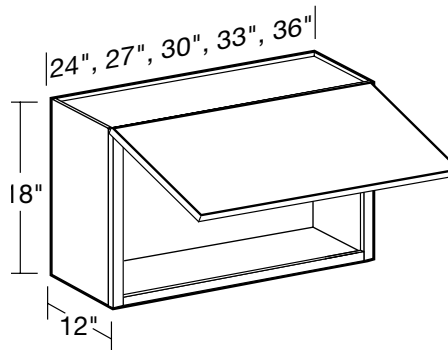
W2418UL

W2718UL

W3018UL

W3318UL

W3618UL



- No adjustable shelf
- **CUSTOM DEPTH: 5" to 15" deep**

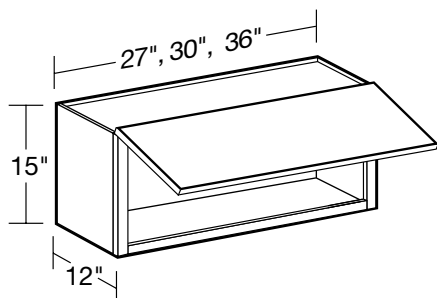
15" High Uplift



W2715UL

W3015UL

W3615UL



- No adjustable shelf
- **CUSTOM DEPTH: 5" to 15" deep**

18" High x 24" Deep Uplift



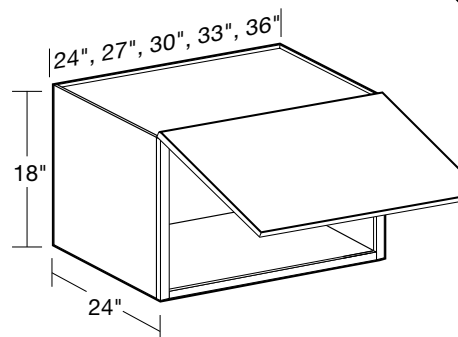
W242418UL

W272418UL

W302418UL

W332418UL

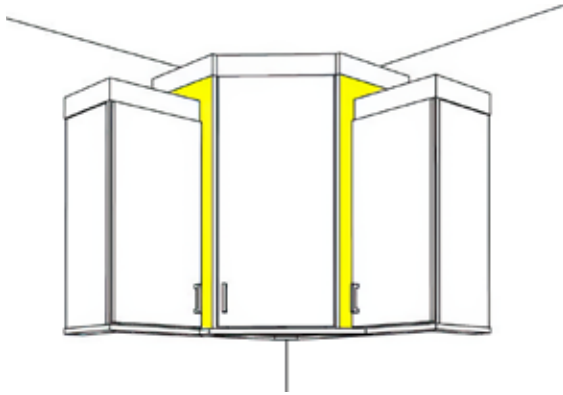
W362418UL



- No adjustable shelf
- Must be installed between two cabinets, cabinet and wall, or supported by CPVT's
- **CUSTOM DEPTH: 16" to 23" deep**

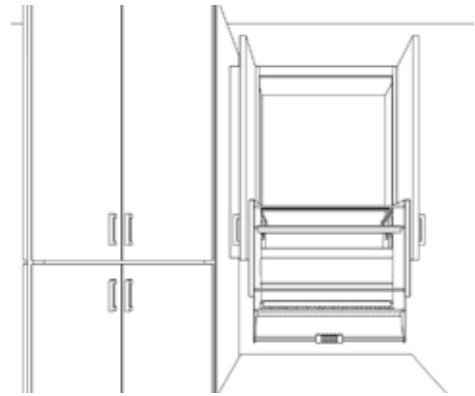
Wall Cabinets Designer Tips

Staggering Upper Cabinets



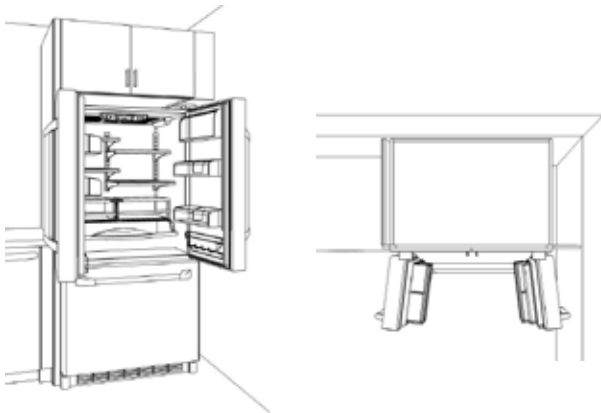
When using the 27" Deep corner cabinets, make sure to place a 3/4" filler next to adjacent cabinet if the adjacent cabinet is shallower. Also make sure to remember the Cover Panel for the deeper cabinet.

Using the Wall Cabinet with accessories



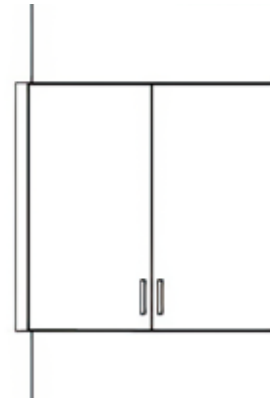
Make sure to allow proper clearance on each side so doors can open 90 degrees or more. This will allow the interior accessory to pull down correctly.

Placing a refrigerator next to a return wall



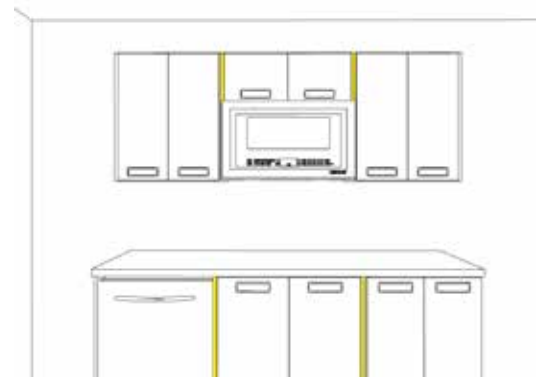
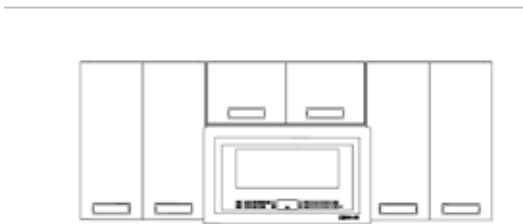
Make sure to leave enough space between refrigerator and wall so doors will open on refrigerator at least 90 degrees.

Placing wall cabinets next to a return wall



When placing cabinets against a side wall, use a minimum of 3/4" filler between wall and cabinet to allow doors to open.

Designing with panels verses skins

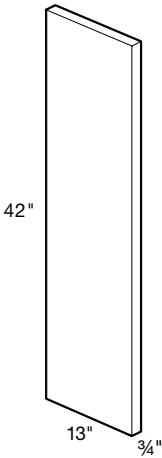


When designing with panels verses skins in the kitchen, you must allow for an extra 3/4" space for each panel. The panels will give the sides of the cabinets the same look/color as the cabinet doors and drawers. When using the panels in the upper run of cabinetry around a microwave or sink, you will also need to balance out the bottom with either panels or fillers so everything stays centered.

Wall Cover Panels

13" Wide Wall Cover Panels

CPVW1342

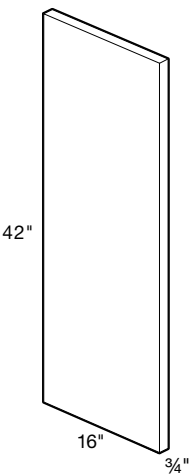


- 3/4" thick
- Durable 2 sided melamine fused to Furniture Grade particleboard or MDF
- Cover Panels designed to match the finish of the doors
- Edgebanded on all 4 sides
- Field installed
- Panel designed for Left or Right application and to align with front of door face to create inset door appearance

NOTE: Must be field modified if using with reduced depth cabinets

16" Wide Wall Cover Panels

CPVW1642

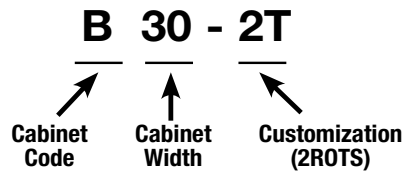


- 3/4" thick
- Durable 2 sided melamine fused to Furniture Grade particleboard or MDF
- Cover Panels designed to match the finish of the doors
- Edgebanded on all 4 sides
- Field installed
- Panel designed for Left or Right application and to align with front of door face to create inset door appearance

NOTE: Must be field modified if using with reduced depth cabinets

Base Cabinets

BASE CABINET CODING

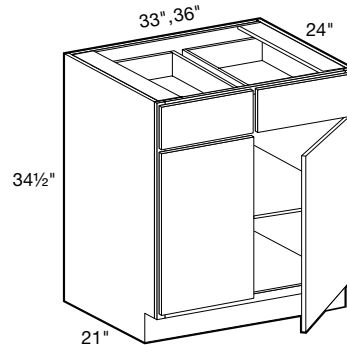


- Standard Base Cabinets are 24" deep and 34½" high
- Soft close hinges and full extension drawers with soft close
- Cabinet depth does not include door thickness
- Standard cabinet exterior is color matched to face frame. Cover panels that match the door finish are optional
- Cover Panels are required if the cabinet will be on the end of a run or exposed in any way.

24" Deep Double Door



B33
B36



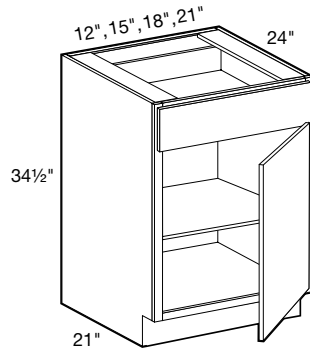
- One full-depth adjustable shelf
- **CUSTOM DEPTH: 9" to 23" deep (9" to 14" deep options have false front & no drawer)**

24" Deep Single Door



SPECIFY
RIGHT or LEFT HINGED

B12
B15
B18
B21

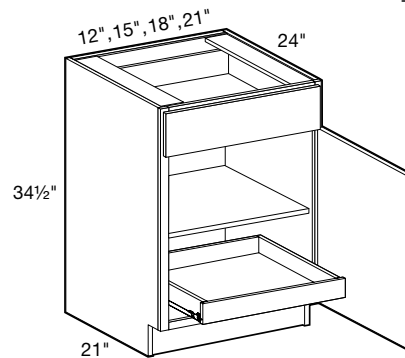


- One full-depth adjustable shelf
- **CUSTOM DEPTH: 9" to 23" deep (9" to 14" deep options have false front & no drawer)**

24" Deep Single Door with 1 Roll-Out Tray

SPECIFY
RIGHT or LEFT HINGED

B12-1T
B15-1T
B18-1T
B21-1T



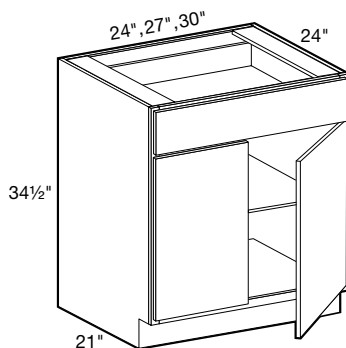
NOTE: Roll-out trays are not adjustable

- One full-depth adjustable shelf
- **One full width, full extension, soft close roll-out tray**

24" Deep Double Door



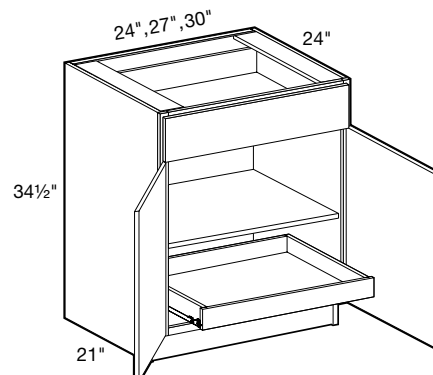
B24
B27
B30



- One full-depth adjustable shelf
- **CUSTOM DEPTH: 9" to 23" deep (9" to 14" deep options have false front & no drawer)**

24" Deep Double Door with 1 Roll-Out Tray

B24-1T
B27-1T
B30-1T

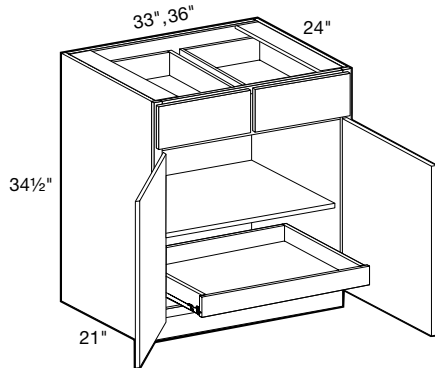


NOTE: Roll-out trays are not adjustable

- One full-depth adjustable shelf
- **One full width, full extension, soft close roll-out tray**

Base Cabinets

24" Deep Double Door with 1 Roll-Out Tray

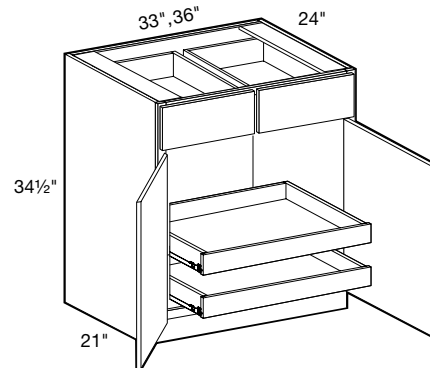


B33-1T
B36-1T

NOTE: Roll-out trays are not adjustable

- One full-depth adjustable shelf
- One full width, full extension, soft close roll-out tray

24" Deep Double Door with 2 Roll-Out Trays

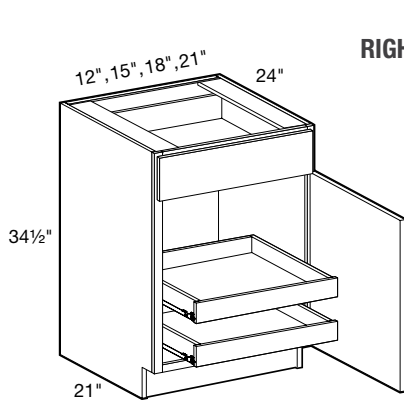


B33-2T
B36-2T

NOTE: Roll-out trays are not adjustable

- Two full width, full extension, soft close roll-out trays

24" Deep Single Door with 2 Roll-Out Trays

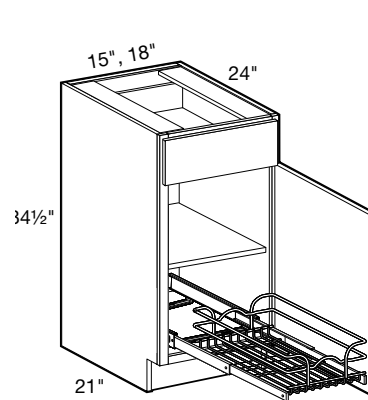


SPECIFY
RIGHT or LEFT HINGED
B12-2T
B15-2T
B18-2T
B21-2T

NOTE: Roll-out trays are not adjustable

- Two full width, full extension, soft close roll-out trays

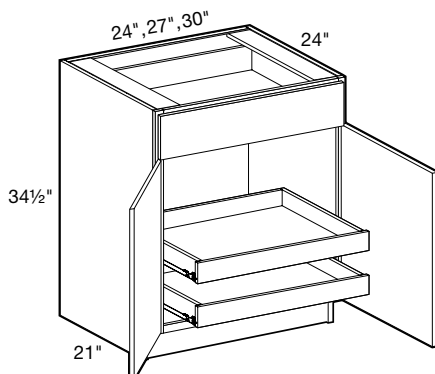
24" Deep Single Door with 1 Chrome Roll-Out Tray



SPECIFY
RIGHT or LEFT HINGED
B15-1WT
B18-1WT

- **FIELD INSTALLED**
- One full width chrome wire roll-out tray
- 100 lb rated full-extension, ball bearing slides (not soft close)
- Floor mounting, not adjustable

24" Deep Double Door with 2 Roll-Out Trays

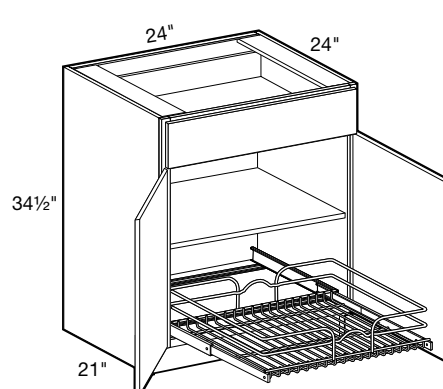


B24-2T
B27-2T
B30-2T

NOTE: Roll-out trays are not adjustable

- Two full width, full extension, soft close roll-out trays

24" Deep Double Door with 1 Chrome Roll-Out Tray

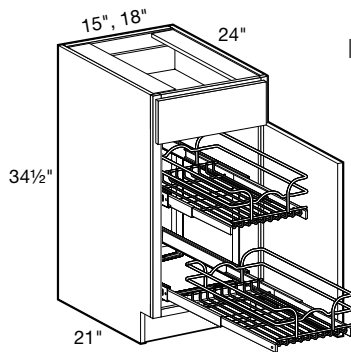


B24-1WT

- **FIELD INSTALLED**
- One full width chrome wire roll-out tray
- 100 lb rated full-extension, ball bearing slides (not soft close)
- Floor mounting, not adjustable

Base Cabinets

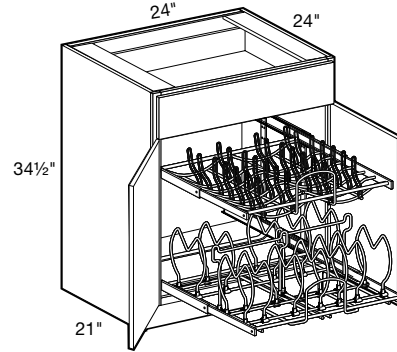
24" Deep Single Door with 2 Chrome Roll-Out Trays



**SPECIFY
RIGHT or LEFT HINGED
B15-2WT
B18-2WT**

- **FIELD INSTALLED**
- Two full width chrome wire roll-out trays
- 100 lb rated full-extension, ball bearing slides (not soft close)
- Floor mounting, not adjustable

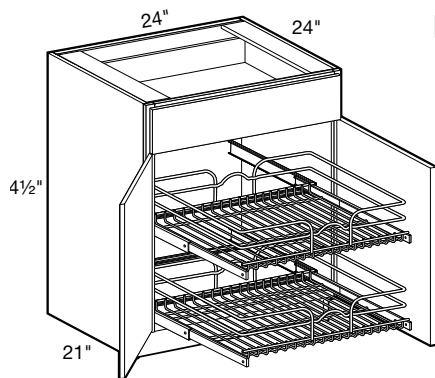
24" Deep Double Door with 2-Tier Cookware Organizer



B24-CWO

- **FIELD INSTALLED**
- Two chrome wire tiers operate independently
- Adjustable dividers on bottom tier accommodate different size pots and pans
- Floor, side, and rear mounted
- 100lb rated full-extension soft close ball-bearing slides

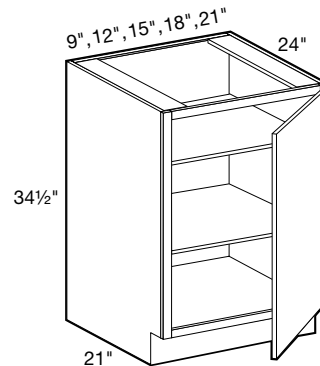
24" Deep Double Door with 2 Chrome Roll-Out Trays



B24-2WT

- **FIELD INSTALLED**
- Two full width chrome wire roll-out trays
- 100 lb rated full-extension, ball bearing slides (not soft close)
- Floor mounting, not adjustable

24" Deep Single Full Height Door

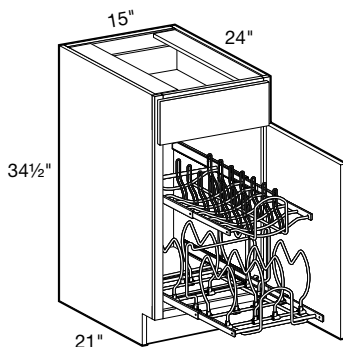


**SPECIFY
RIGHT or LEFT HINGED**

**B09FH
B12FH
B15FH
B18FH
B21FH**

- Two full-depth adjustable shelves
- **CUSTOM DEPTH: 9" to 23" deep**

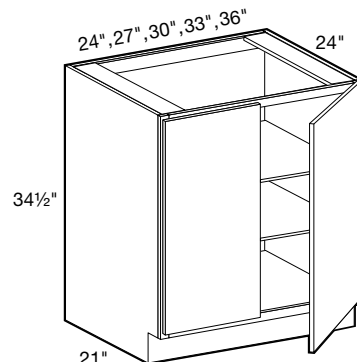
24" Deep Single Door with 2-Tier Cookware Organizer



**SPECIFY
RIGHT or LEFT HINGED
B15-CWO**

- **FIELD INSTALLED**
- Two chrome wire tiers operate independently
- Adjustable dividers on bottom tier accommodate different size pots and pans
- Floor, side, and rear mounted
- 100lb rated full-extension soft close ball-bearing slides

24" Deep Double Full Height Door

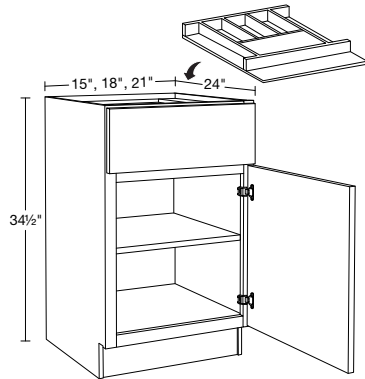


**B24FH
B27FH
B30FH
B33FH
B36FH**

- Two full-depth adjustable shelves
- **CUSTOM DEPTH: 9" to 23" deep**

Base Cabinets

24" Deep Single Door with Cutlery Tray



SPECIFY
RIGHT or LEFT HINGED

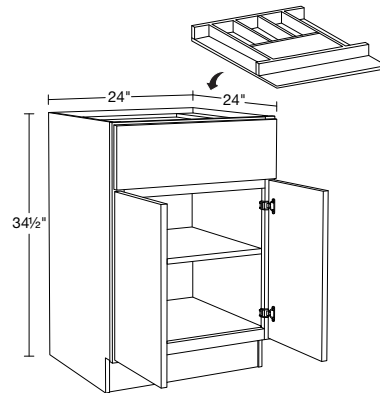
B15-CT

B18-CT

B21-CT

- One full-depth adjustable shelf
- Solid hardwood drawer insert
- 6 compartments 10"-14" deep (B15, B18)
- 8 compartments 10"-14" deep (B21)
- One full width front utensil compartment

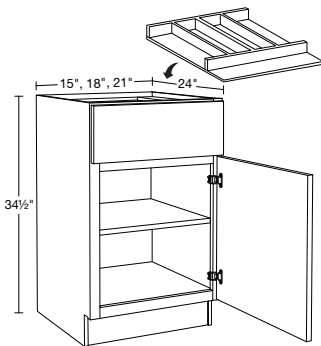
24" Deep Double Door with Cutlery Tray



B24-CT

- One full-depth adjustable shelf
- Solid hardwood drawer insert
- 8 compartments 10"-14" deep (B24)
- One full width front utensil compartment

24" Deep Single Door with Utensil Tray



SPECIFY
RIGHT or LEFT HINGED

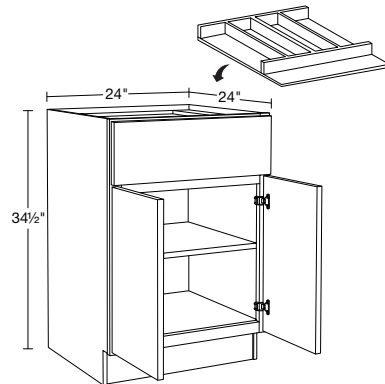
B15-UT

B18-UT

B21-UT

- One full-depth adjustable shelf
- Solid hardwood drawer insert
- 2 additional compartments 16" deep (B15)
- 4 additional compartments 16" deep (B18)
- 5 additional compartments 16" deep (B21)
- One full width front utensil compartment

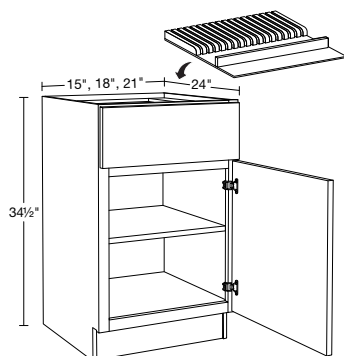
24" Deep Double Door with Utensil Tray



B24-UT

- One full-depth adjustable shelf
- Solid hardwood drawer insert
- 5 additional compartments 16" deep (B24)
- One full width front utensil compartment

24" Deep Single Door with Knife Block



SPECIFY
RIGHT or LEFT HINGED

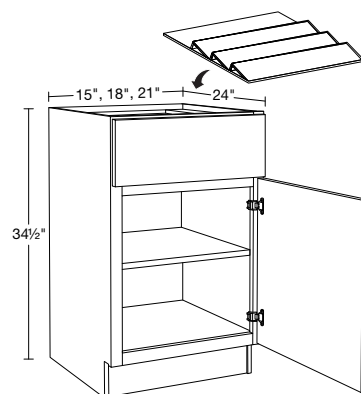
B15-KB

B18-KB

B21-KB

- One full-depth adjustable shelf
- Solid hardwood drawer insert
- 10 knife slots + utensil compartment (B15)
- 13 knife slots + utensil compartment (B18)
- 16 knife slots + utensil compartment (B21)
- One full width front utensil compartment

24" Deep Single Door with Spice Tray



SPECIFY
RIGHT or LEFT HINGED

B15-ST

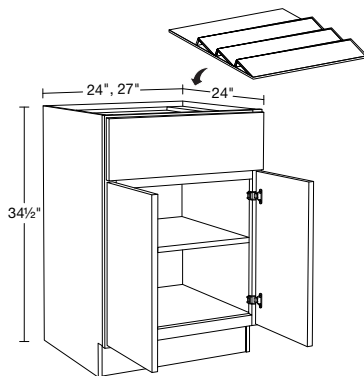
B18-ST

B21-ST

- One full-depth adjustable shelf
- Solid hardwood drawer insert
- Three 5" high angled tiers
- Rear 4" deep compartment

Base Cabinets

24" Deep Double Door with Spice Tray

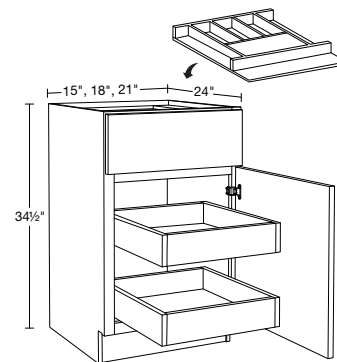


B24-ST

B27-ST

- One full-depth adjustable shelf
- Solid hardwood drawer insert
- Three 5" high angled tiers
- Rear 4" deep compartment

24" Deep Single Door with 2 Roll-Out Trays and Cutlery Tray



SPECIFY
RIGHT or LEFT HINGED

B15-2T-CT

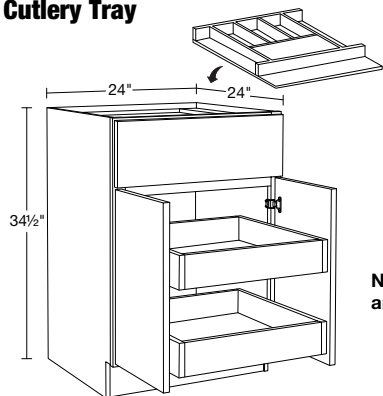
B18-2T-CT

B21-2T-CT

NOTE: Roll-out trays are not adjustable

- Two full width, full extension, soft close roll-out trays
- Solid hardwood drawer insert
- 6 compartments 10"-14" deep (B15, B18)
- 8 compartments 10"-14" deep (B21)

24" Deep Double Door with 2 Roll-Out Trays and Cutlery Tray

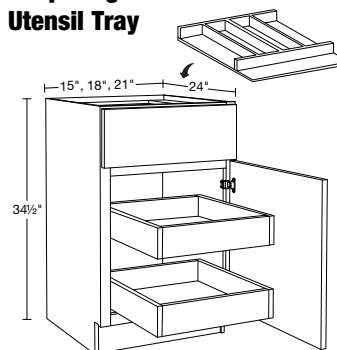


B24-2T-CT

NOTE: Roll-out trays are not adjustable

- Two full width, full extension, soft close roll-out trays
- Solid hardwood drawer insert
- 8 compartments 10"-14" deep (B24)
- One full width front utensil compartment

24" Deep Single Door with 2 Roll-Out Trays and Utensil Tray



SPECIFY
RIGHT or LEFT HINGED

B15-2T-UT

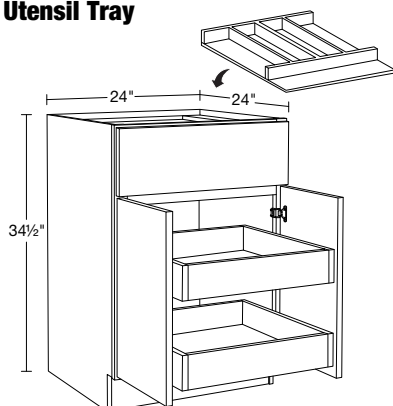
B18-2T-UT

B21-2T-UT

NOTE: Roll-out trays are not adjustable

- Two full width, full extension, soft close roll-out trays
- Solid hardwood drawer insert
- 2 additional compartments 16" deep (B15)
- 4 additional compartments 16" deep (B18)
- 5 additional compartments 16" deep (B21)
- One full width front utensil compartment

24" Deep Double Door with 2 Roll-Out Trays and Utensil Tray

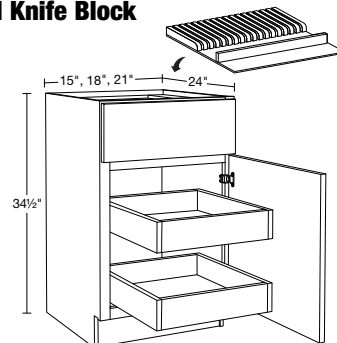


B24-2T-UT

NOTE: Roll-out trays are not adjustable

- Two full width, full extension, soft close roll-out trays
- Solid hardwood drawer insert
- 5 additional compartments 16" deep (B24)
- One full width front utensil compartment

24" Deep Single Door with 2 Roll-Out Trays and Knife Block



SPECIFY
RIGHT or LEFT HINGED

B15-2T-KB

B18-2T-KB

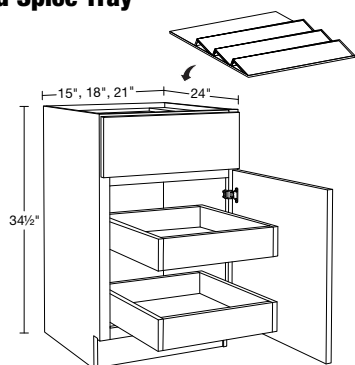
B21-2T-KB

NOTE: Roll-out trays are not adjustable

- Two full width, full extension, soft close roll-out trays
- Solid hardwood drawer insert
- 10 knife slots + utensil compartment (B15)
- 13 knife slots + utensil compartment (B18)
- 16 knife slots + utensil compartment (B21)
- One full width front utensil compartment

Base Cabinets

24" Deep Single Door with 2 Roll-Out Trays and Spice Tray



SPECIFY
RIGHT or LEFT HINGED

B15-2T-ST

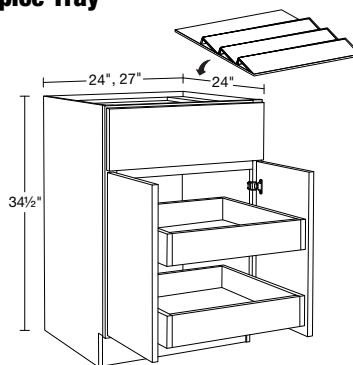
B18-2T-ST

B21-2T-ST

NOTE: Roll-out trays
are not adjustable

- Two full width, full extension, soft close roll-out trays
- Solid hardwood drawer insert
- Three 5" high angled tiers
- Rear 4" deep compartment

24" Deep Double Door with 2 Roll-Out Trays and Spice Tray



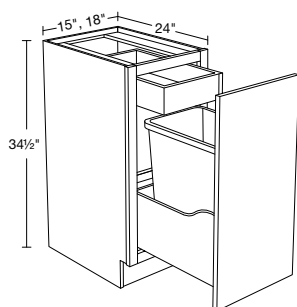
B24-2T-ST

B27-2T-ST

NOTE: Roll-out trays
are not adjustable

- Two full width, full extension, soft close roll-out trays
- Solid hardwood drawer insert
- Three 5" high angled tiers
- Rear 4" deep compartment

24" Deep DELUXE Single 35 qt. Waste Basket Pullout



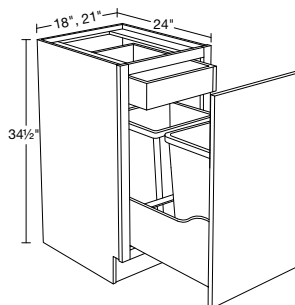
B1DWB15

B1DWB18

- Basket is removable
- Basket slides on heavy duty, full extension, Soft Close runners

- 35 quart white plastic basket sits in a dovetailed plywood drawer box
- Basket dimensions: 14"W x 10"D x 18"H
- Rollout tray not adjustable or removable
- Top mount roll-out tray for trash bag storage
- **SOFT CLOSE DOOR AND ROLL OUT TRAY INCLUDED!**

24" Deep DELUXE Double 35 qt. Waste Basket Pullout



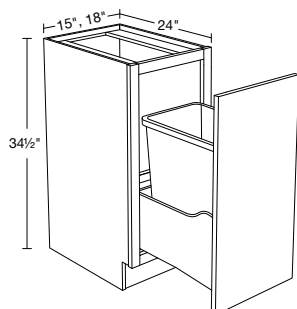
B2DWB18

B2DWB21

- Basket is removable
- Baskets slide on heavy duty, full extension, Soft Close runners

- Two 35 quart white plastic baskets sit in a dovetailed plywood drawer box
- Basket dimensions: 14"W x 10"D x 18"H
- Rollout tray not adjustable or removable
- Top mount roll-out tray for trash bag storage
- **SOFT CLOSE DOOR AND ROLL OUT TRAY INCLUDED!**

Base Full 55qt Single Wastebasket



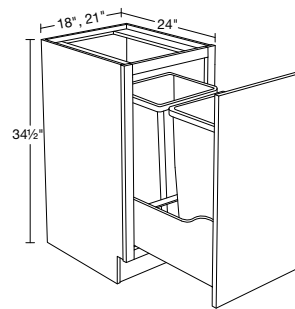
B1LWB15

B1LWB18

- Basket is removable
- Basket slides on heavy duty, full extension, Soft Close runners

- 55 quart white plastic basket sits in a dovetailed plywood drawer box
- Basket dimensions: 14"W x 10"D x 18"H
- Rollout tray not adjustable or removable
- Top mount roll-out tray for trash bag storage
- **SOFT CLOSE DOOR INCLUDED!**

Base Full 55qt Double Wastebasket



B2LWB18

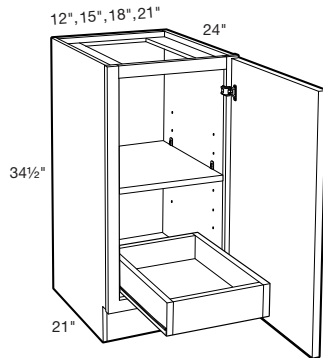
B2LWB21

- Basket is removable
- Baskets slide on heavy duty, full extension, Soft Close runners

- Two 55 quart white plastic baskets sit in a dovetailed plywood drawer box
- Basket dimensions: 14"W x 10"D x 18"H
- Rollout tray not adjustable or removable
- Top mount roll-out tray for trash bag storage
- **SOFT CLOSE DOOR INCLUDED!**

Base Cabinets

24" Deep Double Door with 1 Roll-Out Tray



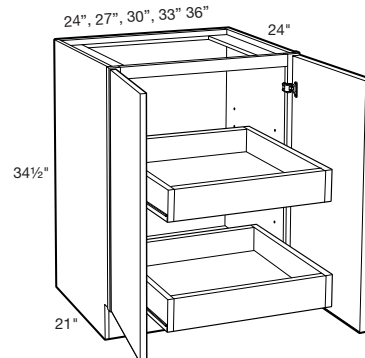
SPECIFY
RIGHT or LEFT HINGED

B12FH-1T
B15FH-1T
B18FH-1T
B21FH-1T

NOTE: Roll-out trays
are not adjustable

- One full-depth adjustable shelf
- One full width, full extension, soft close

24" Deep Double Door with 2 Roll-Out Trays

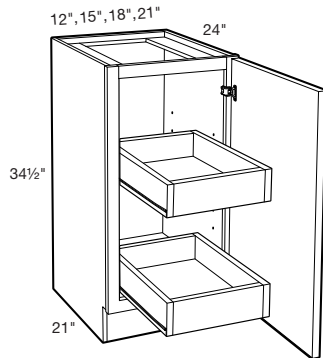


B24FH-2T
B27FH-2T
B30FH-2T
B33FH-2T
B36FH-2T

NOTE: Roll-out trays
are not adjustable

- Two full width, full extension, soft close roll-out trays

24" Deep Single Door with 2 Roll-Out Trays



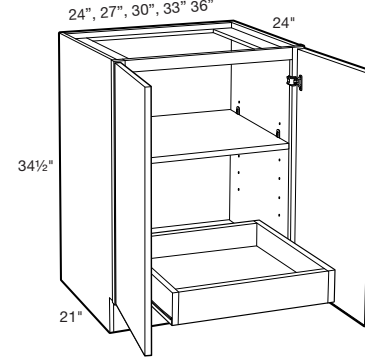
SPECIFY
RIGHT or LEFT HINGED

B12FH-2T
B15FH-2T
B18FH-2T
B21FH-2T

NOTE: Roll-out trays
are not adjustable

- Two full width, full extension, soft close roll-out trays

24" Deep Double Door with 1 Roll-Out Tray

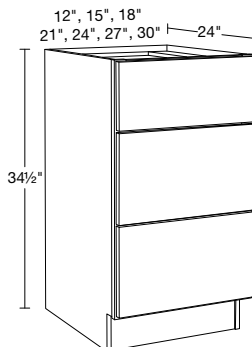


B24FH-1T
B27FH-1T
B30FH-1T
B33FH-1T
B36FH-1T

NOTE: Roll-out trays
are not adjustable

- One full-depth adjustable shelf
- One full width, full extension, soft close

24" Deep Base - 3 Drawers

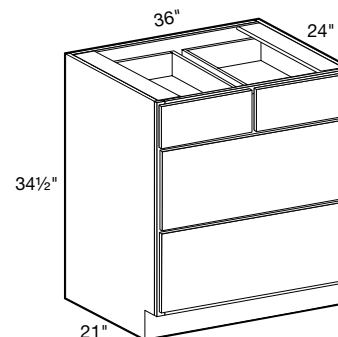


BD12*
BD15
BD18
BD21
BD24
BD27
BD30

- One standard top drawer
- Two deep drawers
- **CUSTOM DEPTH: 15" to 23" deep**

* Maximum drawer handle width is 4" wide for raised panel styles, 5 1/2" wide for recessed panel styles.

24" Deep Base - 4 Drawers

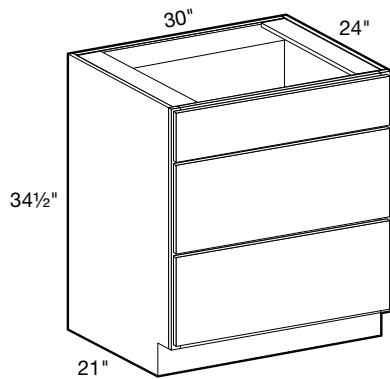


BD36

- Two standard top drawers
- Two deep drawers
- **CUSTOM DEPTH: 15" to 23" deep**

Base Cabinets

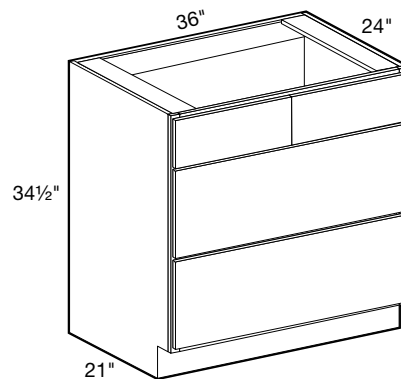
24" Deep Base Cooktop - Single False Front



BCT30

- False top drawer front
- Two deep drawers
- Accepts drop-in cooktop

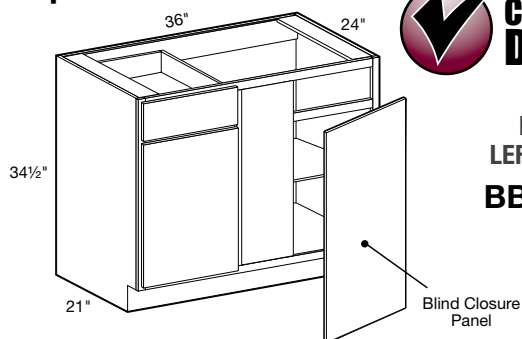
24" Deep Base Cooktop - Double False Front



BCT36

- False top drawer fronts
- Two deep drawers
- Accepts drop-in cooktop

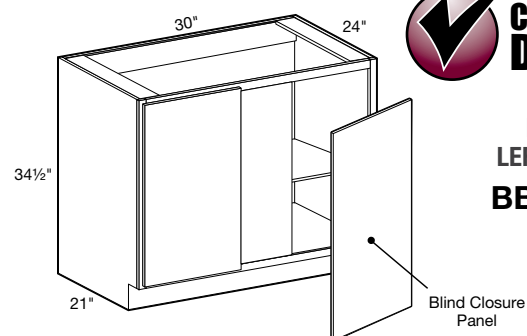
24" Deep Blind Base Corner



CUSTOM DEPTH
SPECIFY
RIGHT or
LEFT BLIND
BBCU42

- Indicate R or L for blind side (right shown)
- Cabinet can be pulled for exact fit (see installation chart)
- 3" filler, 3" & 6" overlay fillers, and 1/8" blind closure panel included
- Door and Drawer Width is 14 3/4"
- **CUSTOM DEPTH: 9" to 23" deep (9" to 14" deep options have false front & no drawer)**

24" Deep Blind Base Corner Full Height Door

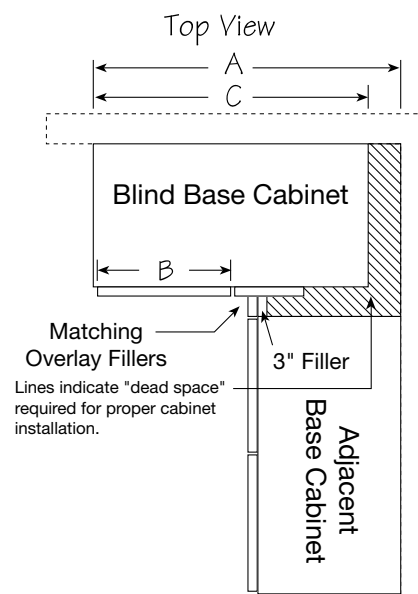


CUSTOM DEPTH
SPECIFY
RIGHT or
LEFT BLIND
BBCU39

- Indicate R or L for blind side (right shown)
- Cabinet can be pulled for exact fit (see installation chart)
- 3" filler, 3" & 6" overlay fillers, and 1/8" blind closure panel included
- Door width is 11 3/4"
- **CUSTOM DEPTH: 9" to 23" deep**

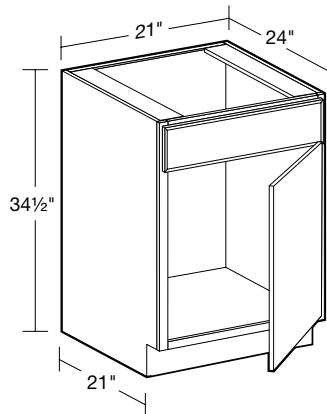
Blind Base Corner Installation

BLIND BASE INSTALLATION GUIDE			
Cabinet	Wall Space "A"	Frame Opening	Cabinet
	Min - Max	Width "B"	Width "C"
BBCU39	39" - 42"	8 7/8"	30"
BBCU42	42" - 45"	12"	36"



Base Cabinets

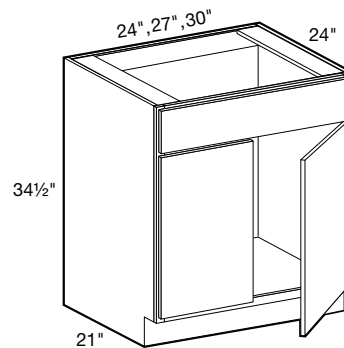
21" Deep Single Door Sink Base



CUSTOM DEPTH
SPECIFY
RIGHT or LEFT HINGED
SB21

- Maximum sink cutout 19" wide
- No shelf
- False drawer front

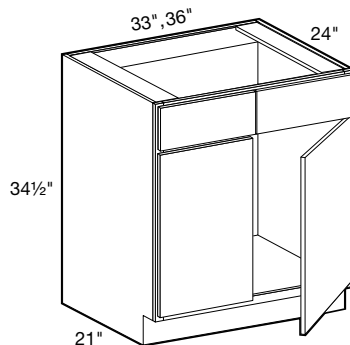
24" Deep Sink Base



CUSTOM DEPTH
SB24
SB27
SB30

- No shelf, false drawer front
- May also be used as drop-in cooktop base
- **CUSTOM DEPTH: 9" to 23" deep**

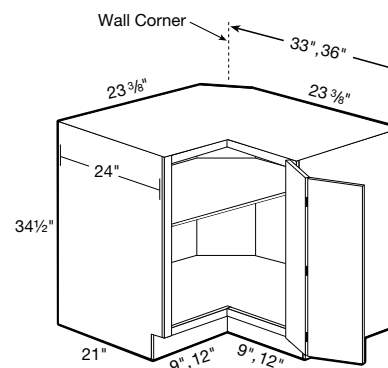
24" Deep Sink Base



CUSTOM DEPTH
SB33
SB36

- No shelf, two false drawer fronts
- May also be used as drop-in cooktop base
- **CUSTOM DEPTH: 9" to 23" deep**

33" and 36" Easy Reach

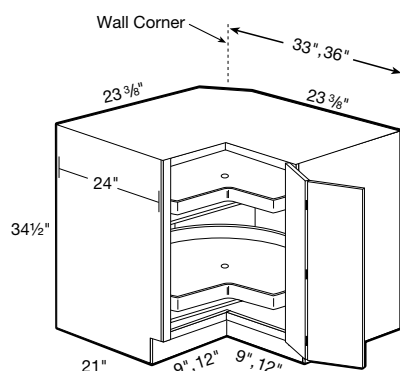


CUSTOM DEPTH
SPECIFY
RIGHT or LEFT HINGED
EZR33
EZR36

- **SOFT CLOSE DOOR (SCD) OPTION NOT AVAILABLE**

- One full-depth straight adjustable shelf (reversible)
- Doors open 170 degrees for easy access
- Clip corner is 1/4" plywood

33" and 36" Easy Reach Super Suzan

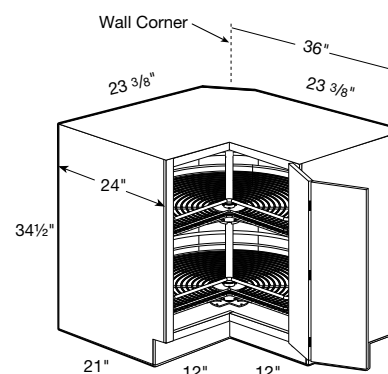


CUSTOM DEPTH
SPECIFY
RIGHT or LEFT HINGED
EZR33SS
EZR36SS

- **SOFT CLOSE DOOR (SCD) OPTION NOT AVAILABLE**

- Two 26" or 28" diameter, pie-cut independently revolving all wood shelves
- Doors open 170 degrees for easy access
- Clip corner is 1/4" plywood

36" Easy Reach Chrome Susan



CUSTOM DEPTH
SPECIFY
RIGHT or LEFT HINGED
EZR36-2WLS

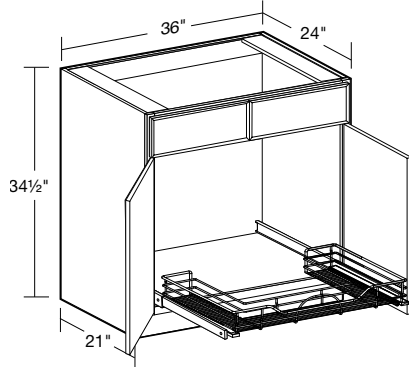
- **SOFT CLOSE DOOR (SCD) OPTION NOT AVAILABLE**

- **CHROME SUSAN FIELD INSTALLED BEFORE COUNTERTOP INSTALLATION**
- Doors open 170 degrees for easy access
- Clip corner is 1/4" plywood

Base Cabinets and Panels

24" Deep Sink Base with 1 Chrome Roll-out Tray

SB36-1USWP

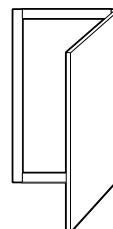
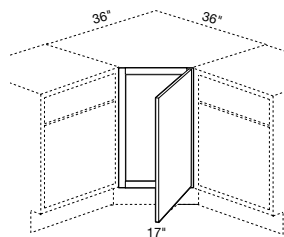


- No Shelf, two false drawer fronts full extension with soft close
- One full width U-shaped chrome wire roll-out tray
- Designed to fit around sink plumbing
- Full extension, 250lb. rated slides with soft-close

Sink Front Angle

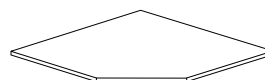
FACE FRAME & DOOR

SFA36



CORNER FLOOR

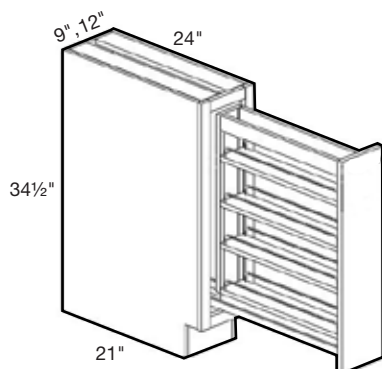
SFAF36



- Angle sink front must be installed between two cabinets
- Frame/door can be installed with hinges on right or left
- Floor support and toe base must be field constructed
- Maximum sink width for this application 25 3/4"

24" Deep Base Pantry Pullout

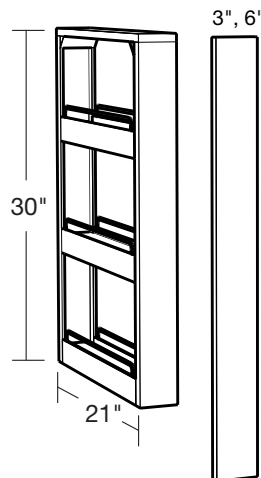
**BPPO9
BPPO12**



- Available in 9" & 12" width cabinets
- Full extension ball bearing slides provide stable, smooth pullout function
- Adjustable shelves with chrome rails

24" Deep Filler Pantry Pullout

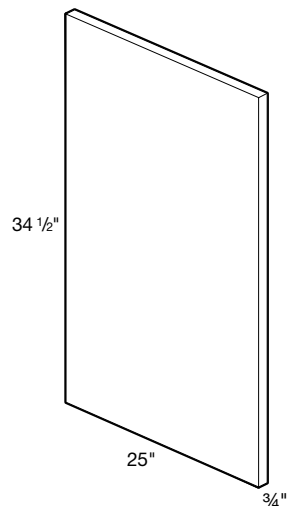
**BFPO3
BFPO6**



- Available in 3" & 6" widths with matching Filler Strip
- A second 3" or 6" filler should be purchased as an overlay filler
- Full extension ball bearing slides provide stable, smooth pullout function
- Adjustable shelves with chrome rails
- Pull-out unit must be installed between two cabinets
- Filler strip attached to pull-out unit after installation

25" Wide Base Cover Panels

CPVB25345

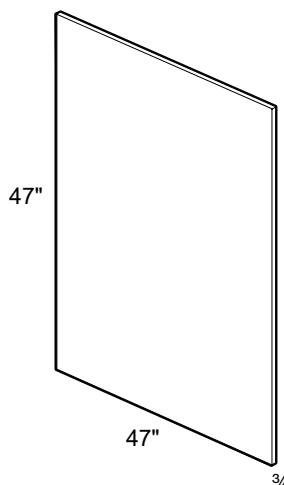


- 3/4" Thick
- Durable 2 sided melamine finish fused to MDF
- Cover Panels designed to match the finish of the doors
- Edgebanded on all 4 sides
- Field installed
- Panel designed for Left or Right application and to align with front of door face to create inset door appearance

NOTE: Must be field modified if using with reduced depth cabinets

Island Panel

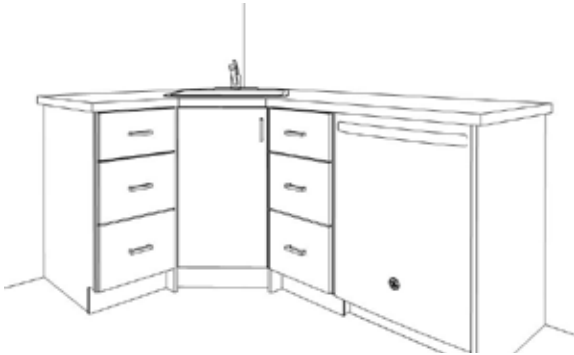
IPL4747



- 3/4" thick
- Durable 2 sided melamine fused to MDF
- Island Panels designed to match the finish of the doors
- Edgebanded on all 4 sides
- Field modified and installed

Base Cabinets Design Tips

Using a Sink Front Angle



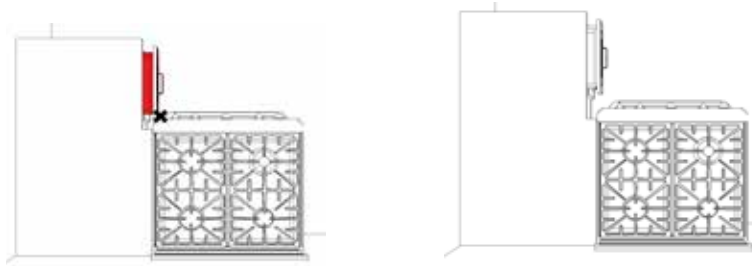
For sufficient dishwasher door clearance and loading/unloading space, a 15" wide base cabinet is recommended for use between a corner sink base and dishwasher.

Clearance for Roll Out Trays



Be sure to leave enough clearance for doors to open at least 90 degrees. This will allow the roll out trays to be operated correctly.

Blind Cabinets with Drawers

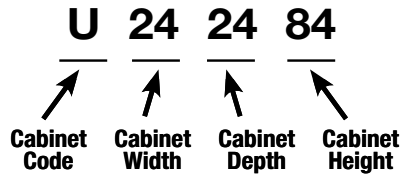


When placing a blind base cabinet, cabinet with drawer or trash pull out, make sure to allow enough clearance so drawer/pull out will open fully.

Make sure to leave enough space to allow drawer to open if placing around corner from range or appliance.

Tall Cabinets

TALL CABINET CODING



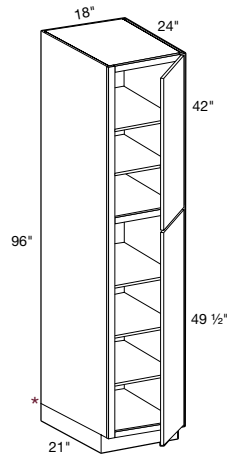
- Standard Tall Cabinets are 24" deep
- Add door thickness for total cabinet depth
- Standard cabinet exterior is color matched to face frame. Cover panels that match the door finish are optional
- Cover Panels are required if the cabinet will be on the end of a run or exposed in any way.
- Soft close hinges

24" Deep Two Door Utility



**SPECIFY
RIGHT or LEFT HINGED**

U182496



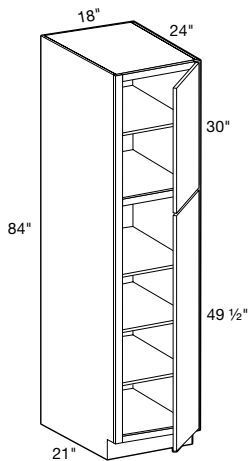
- One fixed shelf dividing upper and lower door, 5 adjustable shelves
- Optional rollout trays or additional shelves available
- * Loose toe kick box for ease of installation
- **CUSTOM DEPTH: 9" to 23"**

24" Deep Two Door Utility



**SPECIFY
RIGHT or LEFT HINGED**

U182484

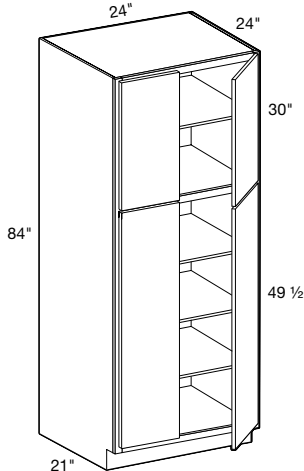


- One fixed shelf dividing upper and lower door, 4 adjustable shelves
- Optional rollout trays or additional shelves available
- **CUSTOM DEPTH: 9" to 23"**

24" Deep Four Butt Door Utility



U242484



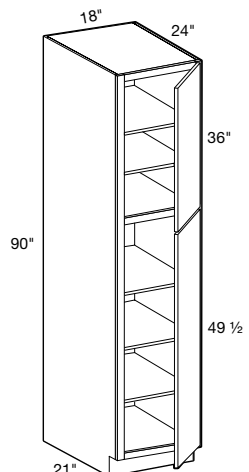
- One fixed shelf dividing upper and lower doors, 4 adjustable shelves
- Optional rollout trays or additional shelves available
- **CUSTOM DEPTH: 9" to 23"**

24" Deep Two Door Utility



**SPECIFY
RIGHT or LEFT HINGED**

U182490

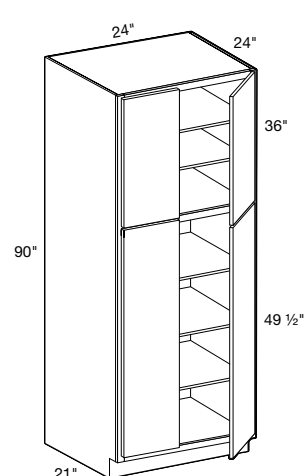


- One fixed shelf dividing upper and lower door, 4 adjustable shelves
- Optional rollout trays or additional shelves available
- **CUSTOM DEPTH: 9" to 23" deep**

24" Deep Four Butt Door Utility



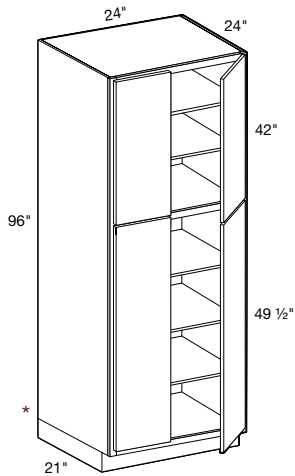
U242490



- One fixed shelf dividing upper and lower doors, 4 adjustable shelves
- Optional rollout trays or additional shelves available
- **CUSTOM DEPTH: 9" to 23" deep**

Tall Cabinets

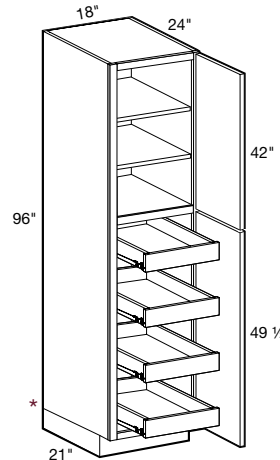
24" Deep Four Butt Door Utility



- One fixed shelf dividing upper and lower doors, 5 adjustable shelves
- Optional rollout trays or additional shelves available
- * Loose toe kick box for ease of installation
- **CUSTOM DEPTH: 9" to 23" deep**

24" Deep Two Door Utility with Four Rollout Trays

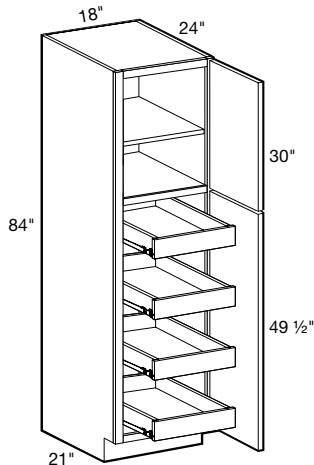
**SPECIFY
RIGHT or LEFT HINGED
U182496-4T**



- One fixed shelf dividing upper and lower door, 2 adjustable shelves
- **Four full width, repositionable, full extension, soft close roll-out trays**
- * Loose toe kick box for ease of installation

24" Deep Two Door Utility with Four Rollout Trays

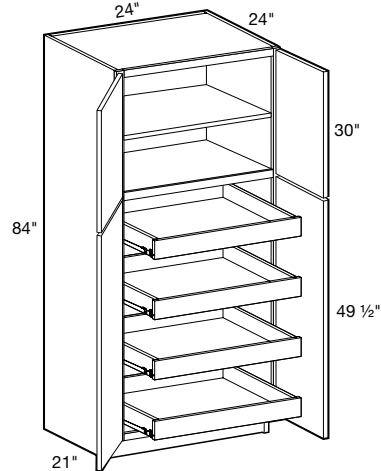
**SPECIFY
RIGHT or LEFT HINGED
U182484-4T**



- One fixed shelf dividing upper and lower door, one adjustable shelf
- **Four full width, repositionable, full extension, soft close roll-out trays**

24" Deep Four Butt Door Utility with Four Rollout Trays

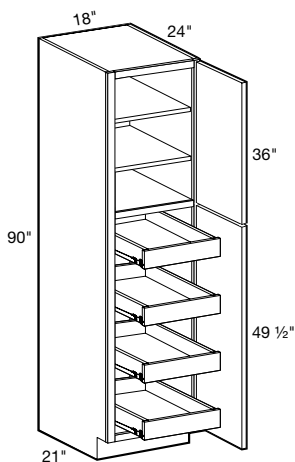
U242484-4T



- One fixed shelf dividing upper and lower doors, one adjustable shelf
- **Four full width, repositionable, full extension, soft close roll-out trays**

24" Deep Two Door Utility with Four Rollout Trays

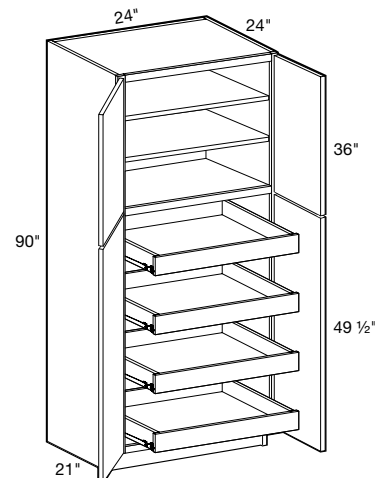
**SPECIFY
RIGHT or LEFT HINGED
U182490-4T**



- One fixed shelf dividing upper and lower door, 2 adjustable shelves
- **Four full width, repositionable, full extension, soft close roll-out trays**

24" Deep Four Butt Door Utility with Four Rollout Trays

U242490-4T

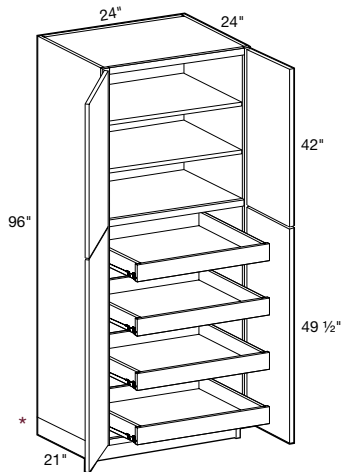


- One fixed shelf dividing upper and lower doors, 2 adjustable shelves
- **Four full width, repositionable, full extension, soft close roll-out trays**

Tall Cabinets

24" Deep Four Butt Door Utility with Four Rollout Trays

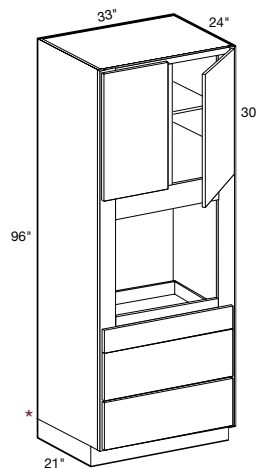
U242496-4T



- One fixed shelf dividing upper and lower doors, 2 adjustable shelves
- **Four full width, repositionable, full extension, soft close roll-out trays**
- * Loose toe kick box for ease of installation

24" Deep Universal Oven

OC332496U

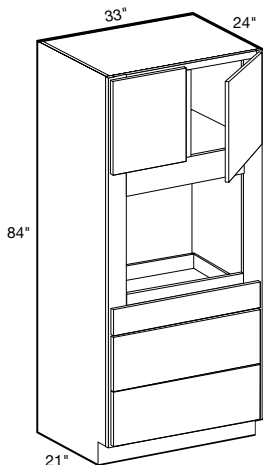


- Consult chart for oven cutout dimensions
- One adjustable shelf
- 3 field removable drawers
- 3" stiles in oven compartment
- * Loose toe kick box for ease of installation
- For frame openings refer to page 37
- 33"W x 62"H cover panel included. This will need to be trimmed to fit on the job site to fit behind the trim of your appliance

CABINET	MIN. WIDTH	MAX. WIDTH	MIN. HEIGHT	MAX. HEIGHT
OC332496U	27"	31"	22"	69"

24" Deep Universal Oven

OC332484U



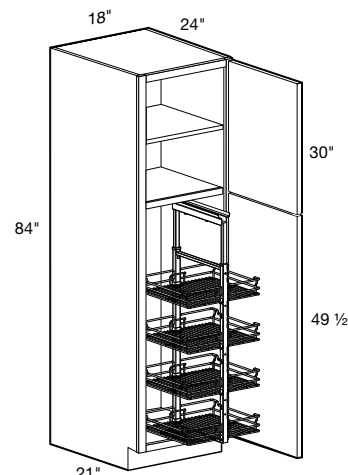
- Consult chart for oven cutout dimensions
- No adjustable shelf
- 3 field removable drawers
- 3" stiles in oven compartment
- For frame openings refer to page 37
- 33"W x 62"H cover panel included. This will need to be trimmed to fit on the job site to fit behind the trim of your appliance

CABINET	MIN. CUTOUT WIDTH	MAX. CUTOUT WIDTH	MIN. CUTOUT HEIGHT	MAX. CUTOUT HEIGHT
OC332484U	27"	31"	22"	60"

24" Deep Two Door Utility with Four Pull-out Chrome Trays

**SPECIFY
RIGHT or LEFT HINGED**

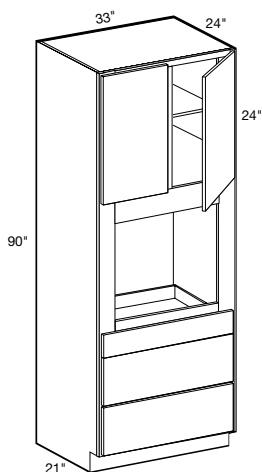
U182484-PO4WS



- **FIELD INSTALLED PULL-OUT UNIT**
- Pull-out unit includes 4 chrome baskets and optional door mounts
- Top and bottom glides are soft closing and 250 lb. weight rated
- One fixed shelf dividing upper and lower door
- One adjustable upper shelf
- Full extension, 250lb. rated slides with soft-close

24" Deep Universal Oven

OC332490U



- Consult chart for oven cutout dimensions
- One adjustable shelf
- 3 field removable drawers
- 3" stiles in oven compartment
- For frame openings refer to page 37
- 33"W x 62"H cover panel included. This will need to be trimmed to fit on the job site to fit behind the trim of your appliance

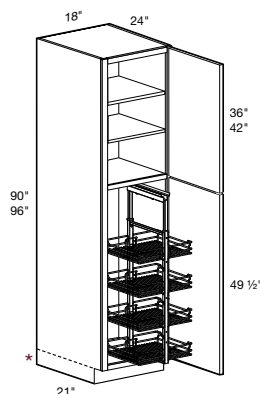
CABINET	MIN. CUTOUT WIDTH	MAX. CUTOUT WIDTH	MIN. CUTOUT HEIGHT	MAX. CUTOUT HEIGHT
OC332490U	27"	31"	22"	60"

24" Deep Two Door Utility with Four Pull-out Chrome Trays

**SPECIFY
RIGHT or LEFT HINGED**

U182490-PO4WS

U182496-PO4WS



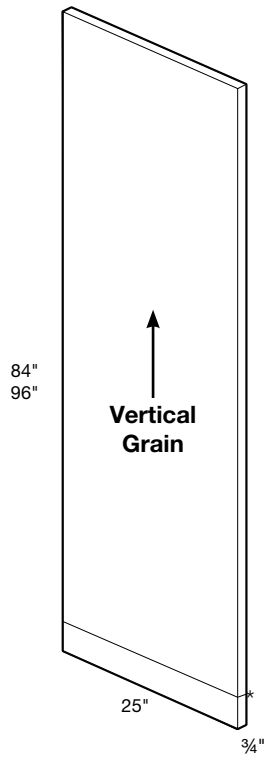
- **FIELD INSTALLED PULL-OUT UNIT**
- Pull-out unit includes 4 chrome baskets and optional door mounts
- Top and bottom glides are soft closing and 250 lb. weight rated
- One fixed shelf dividing upper and lower door
- Two adjustable upper shelves
- Full extension, 250lb. rated slides with soft-close

* Loose toe kick box for ease of installation

25" Wide Tall Cover Panels

CPVT2584

CPVT2596

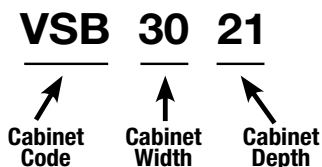


- 3/4" thick
- Durable 2 sided melamine fused to MDF
- Cover Panels designed to match the finish of the doors
- Edgebanded on all 4 sides
- Field installed
- Panel designed for Left or Right application and to align with front of door face to create inset door appearance

NOTE: Must be field modified if using with reduced depth cabinets

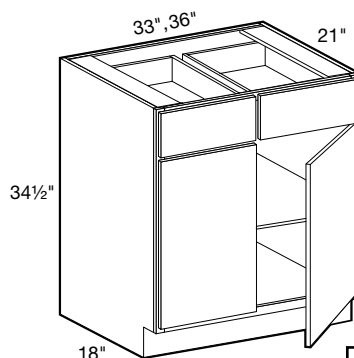
Vanity Base Cabinets

VANITY CABINET CODING



- Standard Vanity Base Cabinets are 21" deep and 34½" high
- Cabinet depth does not include door thickness
- **Custom Depths are available where indicated. Use Standard Base Cabinet coding to order as specified.**
- Standard cabinet exterior is color matched to face frame. Cover panels that match the door finish are optional
- Soft close hinges
- Cover Panels are required if the cabinet will be on the end of a run or exposed in any way.

21" Deep Double Door Vanity Base



**STANDARD
21" DEPTHS**

**VB3321
VB3621**



FOR CUSTOM DEPTHS

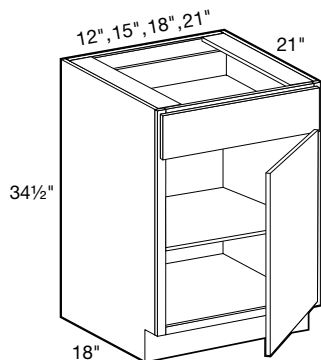
- Order **B33** or **B36**
- Select 9" to 23" depth
- 9" to 14" deep have false fronts & no drawer

21" Deep Single Door Vanity Base

**SPECIFY
RIGHT or LEFT HINGED**

**STANDARD
21" DEPTHS**

**VB1221
VB1521
VB1821
VB2121**



FOR CUSTOM DEPTHS

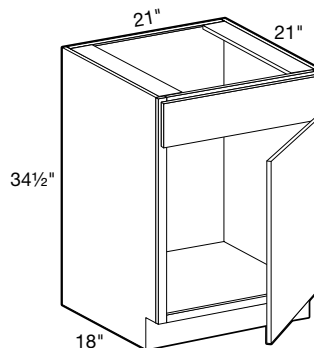
- One full depth adjustable shelf
- One standard drawer

- Order **B12, B15, B18** or **B21**
- Select 9" to 23" depth
- 9" to 14" deep have false fronts & no drawer

21" Deep Single Door Vanity Sink Base

**SPECIFY
RIGHT or LEFT HINGED**

VS2121

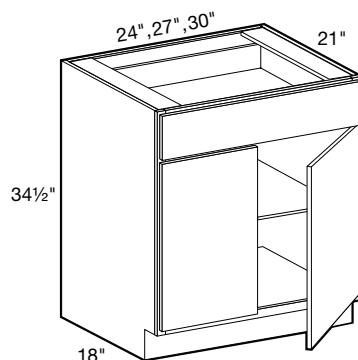


- Maximum sink cutout 19" wide
- No shelf
- False drawer front

21" Deep Double Door Vanity Base

**STANDARD
21" DEPTHS**

**VB2421
VB2721
VB3021**



FOR CUSTOM DEPTHS

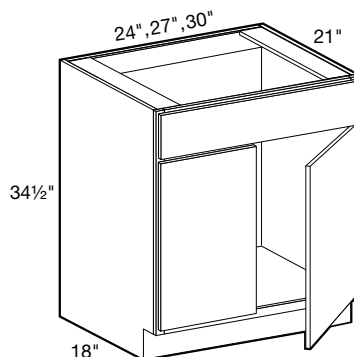
- One full depth adjustable shelf
- One standard drawer

- Order **B24, B27** or **B30**
- Select 9" to 23" depth
- 9" to 14" deep have false fronts & no drawer

21" Deep Double Door Vanity Sink Base

**STANDARD
21" DEPTHS**

**VS2421
VS2721
VS3021**



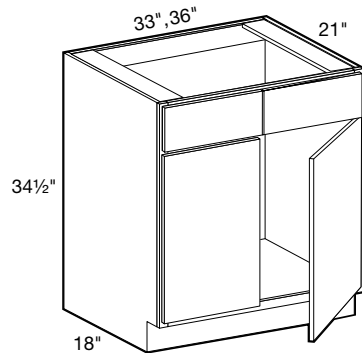
FOR CUSTOM DEPTHS

- No shelf
- False drawer front

- Order **SB24, SB27** or **SB30**
- Select 9" to 23" depth

Vanity Base Cabinets

21" Deep Double Door Vanity Sink Base



- No shelf, two false drawer fronts

**STANDARD
21" DEPTHS**

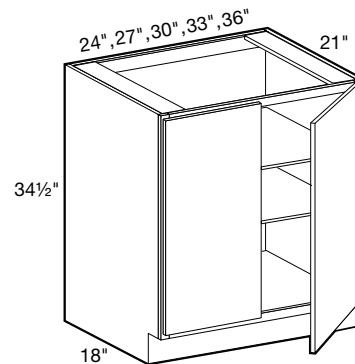
**VSB3321
VSB3621**



FOR CUSTOM DEPTHS

- Order **SB33** or **SB36**
- Select 9" to 23" depth

21" Deep Double Full Height Door Vanity Base



- Two adjustable shelves

**STANDARD
21" DEPTHS**

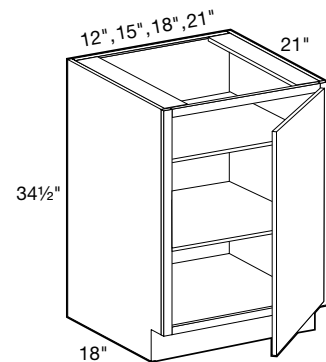
**VB2421FH
VB2721FH
VB3021FH
VB3321FH
VB3621FH**



FOR CUSTOM DEPTHS

- Order **B24FH**, **B27FH**, **B30FH** or **B36FH**
- Select 9" to 23" depth

21" Deep Single Full Height Door Vanity Base



- Two adjustable shelves

**SPECIFY
RIGHT or LEFT HINGED**

**STANDARD
21" DEPTHS**

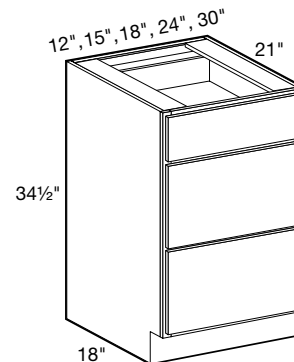
**VB1221FH
VB1521FH
VB1821FH
VB2121FH**



FOR CUSTOM DEPTHS

- Order **B12FH**, **B15FH**, **B18FH** or **B21FH**
- Select 9" to 23" depth

21" Deep Vanity Base Drawer



- One standard drawer
- Two deep drawers

**STANDARD
21" DEPTHS**

**VBD1221
VBD1521
VBD1821
VBD2421
VBD3021**



FOR CUSTOM DEPTHS

- Order **BD12**, **BD15**, **BD18**, **BD24** or **BD30**
- Select 15" to 23" depth

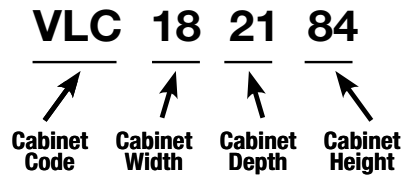
Designing with Vanity Base Cabinets for a Cost Savings



If you need to gain up to 3" of depth, use Vanity base cabinets in your kitchen or laundry room instead of customizing the depth of a standard base for a cost savings!

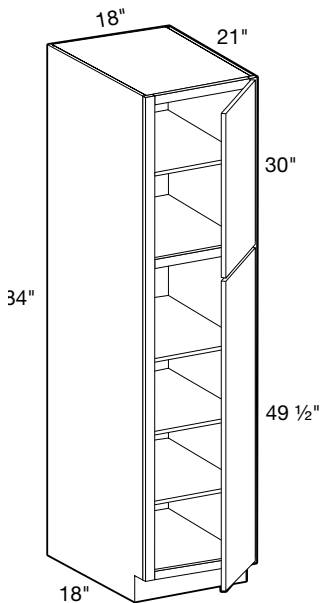
Vanity Linen

VANITY CABINET CODING



- Standard Vanity Linen Cabinets are 21" deep and 34½" high
- Cabinet depth does not include door thickness
- Custom Depths are available where indicated. Use Standard Tall Cabinet coding to order as specified.**
- Standard cabinet exterior is color matched to face frame. Cover panels that match the door finish are optional
- Cover Panels are required if the cabinet will be on the end of a run or exposed in any way.
- Soft close hinges

21" Deep Two Door Linen



**SPECIFY
RIGHT or LEFT HINGED**

**21" DEPTH
VLC182184**

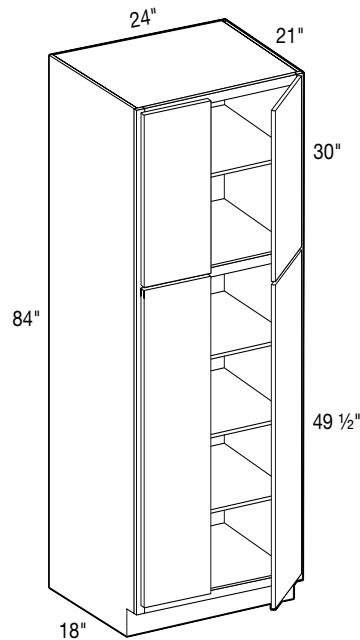
- One fixed shelf dividing upper and lower doors, four adjustable shelves



FOR CUSTOM DEPTHS

- Order **U182484**
- Select 9" to 23" depth

21" Deep Four Door Linen



**21" DEPTH
VLC242184**

- One fixed shelf dividing upper and lower doors, four adjustable shelves



FOR CUSTOM DEPTHS

- Order **U182484**
- Select 9" to 23" depth

COVER PANEL DESIGN TIPS

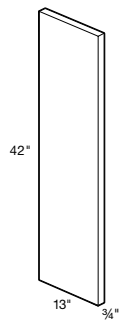
In our Metropolitan Series the sides of the cabinets will be finished to the color of the face frame and will not have a High Gloss Finish.

To achieve a Hi-Gloss Finish you will need to apply cover panels to the sides of exposed cabinets.

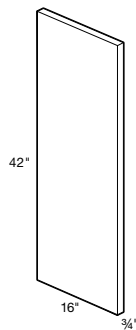
The cover panels are deeper than the box and door of the cabinet to create an inset look to the door.

- The height of the panel will be the box height or may have to be modified on the job site to match the height of the box.
- Please also keep in mind that the panels are $\frac{3}{4}$ " thick, so plan for them when you are designing as adding them after the fact could be a problem

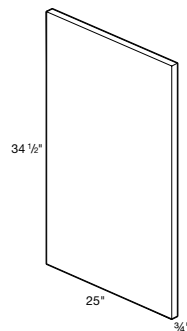
**13" Wide Wall
Cover Panels**
Page 12



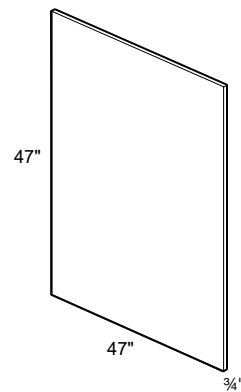
**16" Wide Wall
Cover Panels**
Page 12



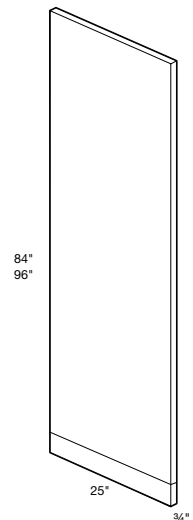
**25" Wide Base
Cover Panels**
Page 20



Island Panel
Page 20



25" Wide Tall Cover Panels
Page 24



This picture shows the cabinets if no panels are used. The sides will be matte finished to match the face frame not the doors of the cabinet. The doors and drawer fronts set on the face-frame and will not have an inset look.



Cover Panels

This picture shows the cabinets with the cover panels applied as well as top and bottom molding to give the cabinet doors an inset look. For the top and bottom, filler pieces (FS96) were used and pulled out to just beyond the cabinet door, so about 1 Inch.

When using panels, a good rule to remember is that what ever you do to the upper cabinets you must also account for on the bottom run.

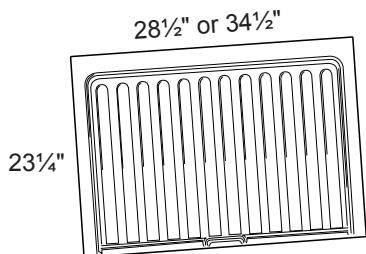
As an example, please notice around the upper bridge cabinet, there are panels on each side. To keep the run symmetrical and in line, panels were also used on each side of the full height door cabinet below.



Another way to create this look is to use waterfall countertops on the end of the cabinet run and on the island. Panels can be used on the uppers and countertop on the lowers.



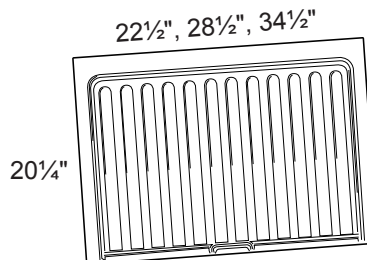
Sink Base Liner



SBL2730
SBL3336

- Helps protect sink cabinet from damage due to leaks in piping or drains
- Sleek surface for easy cleanup
- SBL2730 can be trimmed to fit SB27 or SB30
- SBL3336 can be trimmed to fit SB33 or SB36
- Field installed
- Grey polystyrene easy to clean surface
- Not for use in custom-depth cabinets

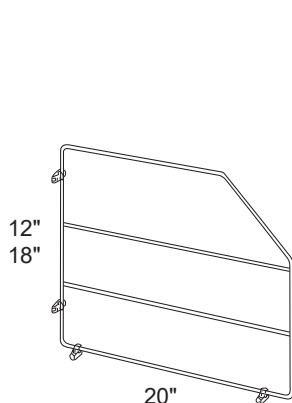
21" Deep Vanity Sink Base Liner



VSBL2124
VSBL2730
VSBL3336

- Helps protect sink cabinet from damage due to leaks in piping or drains
- Field installed
- Grey polystyrene easy to clean surface
- Not for use in custom-depth cabinets
- VSBL2124 can be trimmed to fit VSB2121 or VSB2421
- VSBL2730 can be trimmed to fit VSB2721 or VSB3021
- VSBL3336 can be trimmed to fit VSB3321 or VSB3621

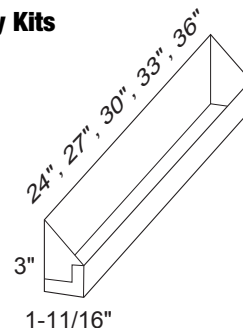
Tray Dividers



TD12CR
TD18CR

- Available in 12" & 18" heights
- Chrome finish
- Stores baking sheets, serving dishes, etc.
- Comes with 4 clips & fasteners
- Attaches to cabinet middle or bottom shelf
- Field installed
- Not for use in custom-depth cabinets

Tilt-out Tray Kits

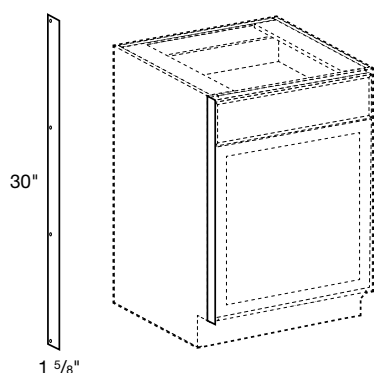


SBTOTK24
SBTOTK27
SBTOTK30
SBTOTK33*
SBTOTK36*

- Kit attaches to sink base false drawer front to create tilt-out drawer
- Holds sponges, scouring pads, dish soaps, etc.
- Stainless steel construction
- Field installed prior to countertop
- * Two trays included to fit double false fronts

Heat Shield

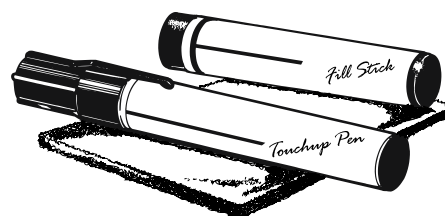
HEAT_SHIELD_WHITE
HEAT_SHIELD_BLACK



- Helps protect cabinet doors adjacent to ovens
- Attaches to the cabinet face frame
- Available in White or Black

Touch-Up Kit

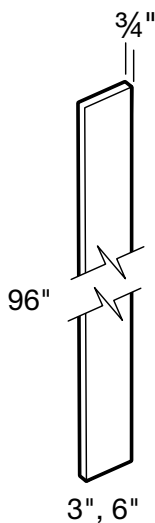
TUK



- **Not included with cabinets, must purchase separately**
- Includes fill stick, touch-up pen, and 4 door bumpers
- Will match the face frame, not the high gloss door finish color

Accessories

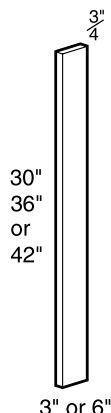
Tall Filler Strips



FS96
FS696

- 3/4" Thick
- Durable 2 side melamine finish fused to MDF
- Edgebanded on 2 long sides except 3" fillers. 3" fillers will only have front and one side
- Available in all melamine door finishes

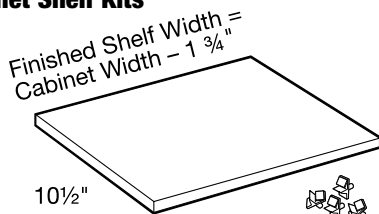
Filler Strip



FS30 FS630
FS36 FS636
FS42 FS642

- 3/4" Thick
- Durable 2 sided melamine finish fused to MDF
- Edgebanded on 2 long sides except 3" fillers. 3" fillers will only have front and one side

Wall Cabinet Shelf Kits

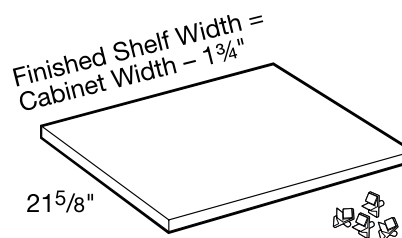


SK1212 SK2112 SK3012
SK1512 SK2412 SK3312
SK1812 SK2712 SK3612

- Shelf kits are 3/4" thick plywood finished with vinyl laminate color matched to cabinetry face frame
- Edgebanded on front edge
- One shelf and set of clips per kit

EXAMPLE: 36" wide wall cabinet uses SK3612

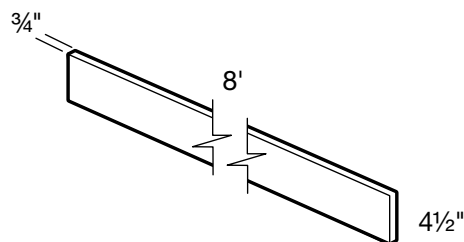
Base Cabinet Shelf Kits



SK1224 SK2124 SK2724 SK3324
SK1524 SK2424 SK3024 SK3624
SK1824

- Shelf kits are 3/4" thick plywood finished with vinyl laminate color matched to cabinetry face frame
- Edgebanded on front edge
- One shelf and set of clips per kit
- Consult availability guide

8' Matching Toe Kick – Matches Door Finish

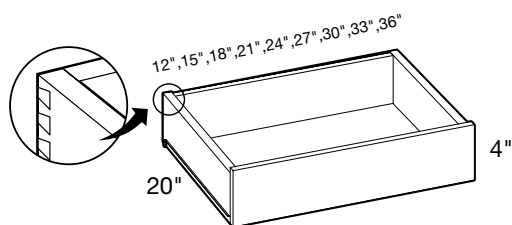


TKFS8

- Durable 2 sided melamine fused to Furniture Grade particleboard or MDF
- Face and two long edges are edgebanded
- Available in all melamine door finishes
- Field modified and installed
- TKFS8 designed to match finish of the doors

SHELF KIT AVAILABILITY GUIDE		
PART#	DESIGNED TO FIT	ACTUAL WIDTH
SK1224	B12, B12FH	10 1/4"
SK1524	B15, B15FH	13 3/4"
SK1824	B18, B18FH, U182484/96	16 3/4"
SK2124	B21, B21FH	19 3/4"
SK2424	B24, B24FH, SB24, U242484 / 90 / 96	22 3/4"
SK2724	B27, B27FH, SB27	25 3/4"
SK3024	B30, B30FH, SB30, BBCU39	28 3/4"
SK3324	B33, B33FH, SB33, OC332484U / 90U / 96U	31 3/4"
SK3624	B36, B36FH, SB36, BBCU42	34 3/4"

Rollout Tray Kits



ROT12 ROT18 ROT24 ROT30 ROT36
ROT15 ROT21 ROT27 ROT33

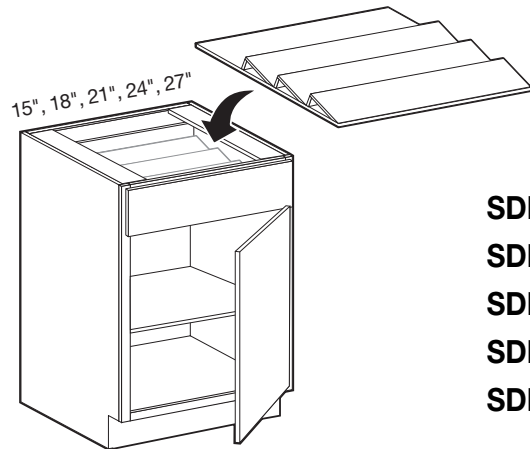
NOTE: Roll out trays not available for Vanity Linen Cabinets or reduced depth cabinets.

- 5/8" Solid wood dovetail construction
- Includes **full extension** smooth-glide **under-mounted** runners
- **Soft Close Included**
- **90 lb. load capacity**
- Available for use base and tall cabinets
- Field-install into factory pre-drilled locations only
- Consult availability guide

ROLL-OUT TRAY KIT AVAILABILITY GUIDE		
PART#	DESIGNED TO FIT	ACTUAL WIDTH
ROT12	B12, B12FH	8"
ROT15	B15, B15FH	11"
ROT18	B18, B18FH, U182484 / 90 / 96	14"
ROT21	B21, B21FH	17"
ROT24	B24, B24FH, SB24, U242484 / 90 / 96	20"
ROT27	B27, B27FH, SB27	23"
ROT30	B30, B30FH, SB30	26"
ROT33	B33, B33FH, SB33	29"
ROT36	B36, B36FH, SB36	32"

Accessories

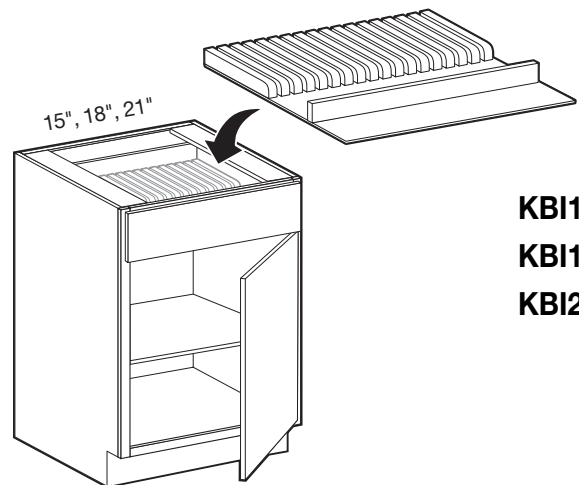
Spice Drawer Insert



SDI15
SDI18
SDI21
SDI24
SDI27

- Solid hardwood drawer insert
- Three 5" high angled tiers
- Rear 4" deep compartment
- Sized to fit inside 15", 18", 21", 24", 27" wide drawers
- Not for use in custom-depth cabinets

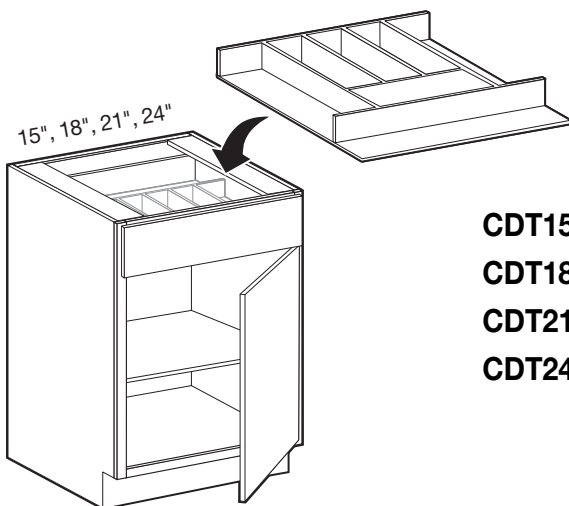
Knife Block Insert



KBI15
KBI18
KBI21

- Solid hardwood drawer insert
- One full width front utensil compartment
- KBI15:** 10 knife slots + utensil compartment (fits B15, BD15)
- KBI18:** 13 knife slots + utensil compartment (fits B18, BD18, B36, BD36)
- KBI21:** 16 knife slots + utensil compartment (fits B21)
- Not for use in custom-depth cabinets

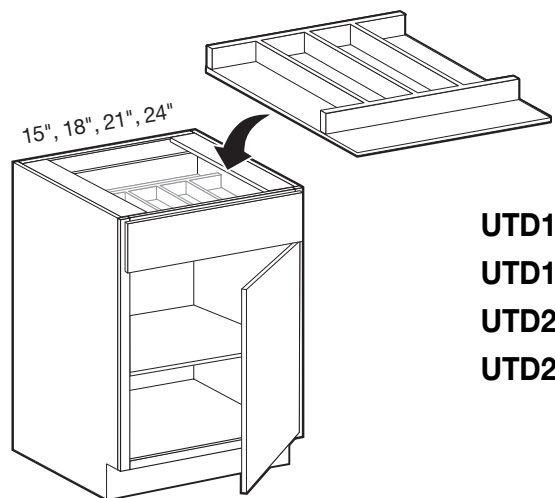
Cutlery Divider Tray



CDT15
CDT18
CDT21
CDT24

- Solid hardwood drawer insert
- One full width front utensil compartment
- CDT15:** 6 compartments 10"-14" deep (fits B15, BD15)
- CDT18:** 6 compartments 10"-14" deep (fits B18, BD18, B36, BD36)
- CDT21:** 8 compartments 10"-14" deep (fits B21)
- CDT24:** 8 compartments 10"-14" deep (fits B24, BD24)
- Not for use in custom-depth cabinets

Utensil Divider Tray



UTD15
UTD18
UTD21
UTD24

- Solid hardwood drawer insert
- One full width front utensil compartment
- UTD15:** 2 additional compartments 16" deep (fits B15, BD15)
- UTD18:** 4 additional compartments 16" deep (fits B18, BD18, B36, BD36)
- UTD21:** 5 additional compartments 16" deep (fits B21)
- UTD24:** 5 additional compartments 16" deep (fits B24, BD24)
- Not for use in custom-depth cabinets



- Matte black

DH801-96MBL

4-1/4" Square Bar Pull

3 3/4" center (96mm)

DH801-128MBL

5-1/2" Square Bar Pull

5" center (128mm)

DH00801-17MBL

6-3/4" Square Bar Pull

6-5/16" center (160mm)



- Brushed nickel

DH801-96BRN

4-1/4" Square Bar Pull

3 3/4" center (96mm)

DH801-128BRN

5-1/2" Square Bar Pull

5" center (128mm)

DH00801-17MBL

6-3/4" Square Bar Pull

6-5/16" center (160mm)



- Champagne Bronze

DH873-96CHBR

4-1/4" Square Bar Pull

3 3/4" center (96mm)

DH873-128CHBR

5-3/8" Square Bar Pull

5" center (128mm)

DH873-160CHBR

6-3/4" Square Bar Pull

6-5/16" center (160mm)



- Brushed nickel

DH5016-96BRN

5-3/8" Tubular Bar Pull

3 3/4" center (96mm)

DH5016-128BRN

6-5/8" Tubular Bar Pull

5" center (128mm)

DH5016-160BRN

7-7/8" Tubular Bar Pull

6-5/16" center (160mm)



- Champagne Bronze

DH5016-96CHBR

5-3/8" Tubular Bar Pull

3 3/4" center (96mm)

DH5016-128CHBR

6-5/8" Tubular Bar Pull

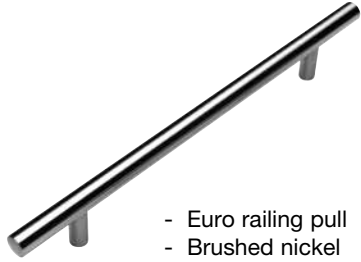
5" center (128mm)

DH5016-160CHBR

7-7/8" Tubular Bar Pull

6-5/16" center (160mm)

Decorative Hardware



- Euro railing pull
- Brushed nickel

DH45-100 - 6 15/16" Euro Pull
3-13/16" center (96mm)

DH45-102 - 10 3/4" Euro Pull
7-9/16" center (192mm)

DH45-104 - 14 7/8" Euro Pull*
11-3/4" center (298mm)

DESIGN TIP: Make sure to double check the length of drawer/door to ensure pull will fit the cabinet



DH99-188

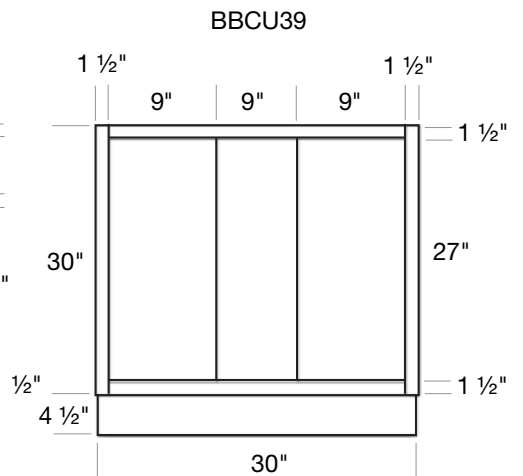
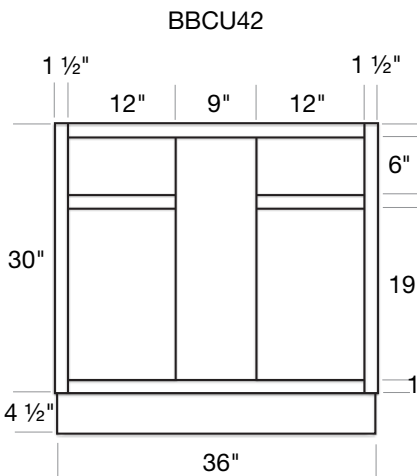
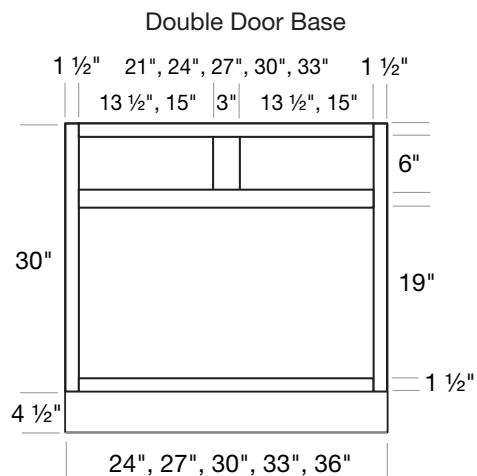
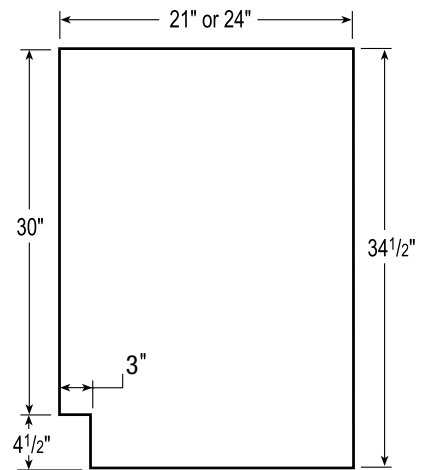
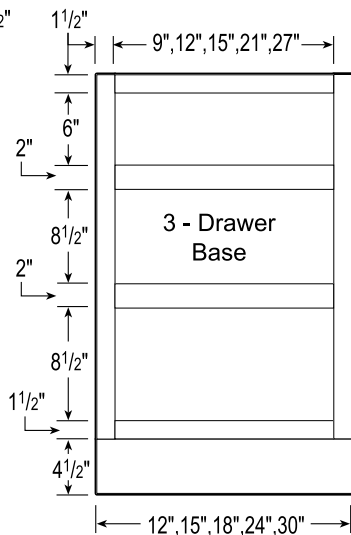
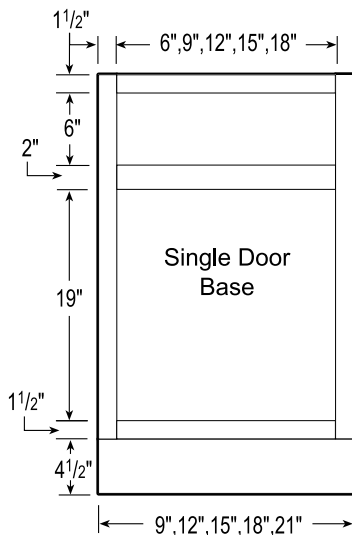
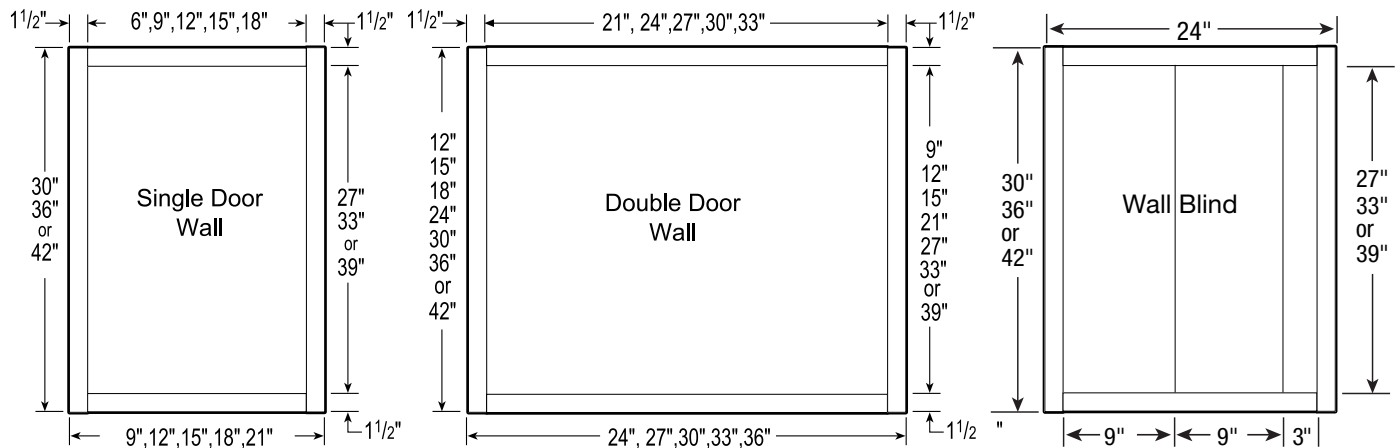
- Round knob
- Brushed nickel
- 1-1/4" diameter

DH99-128



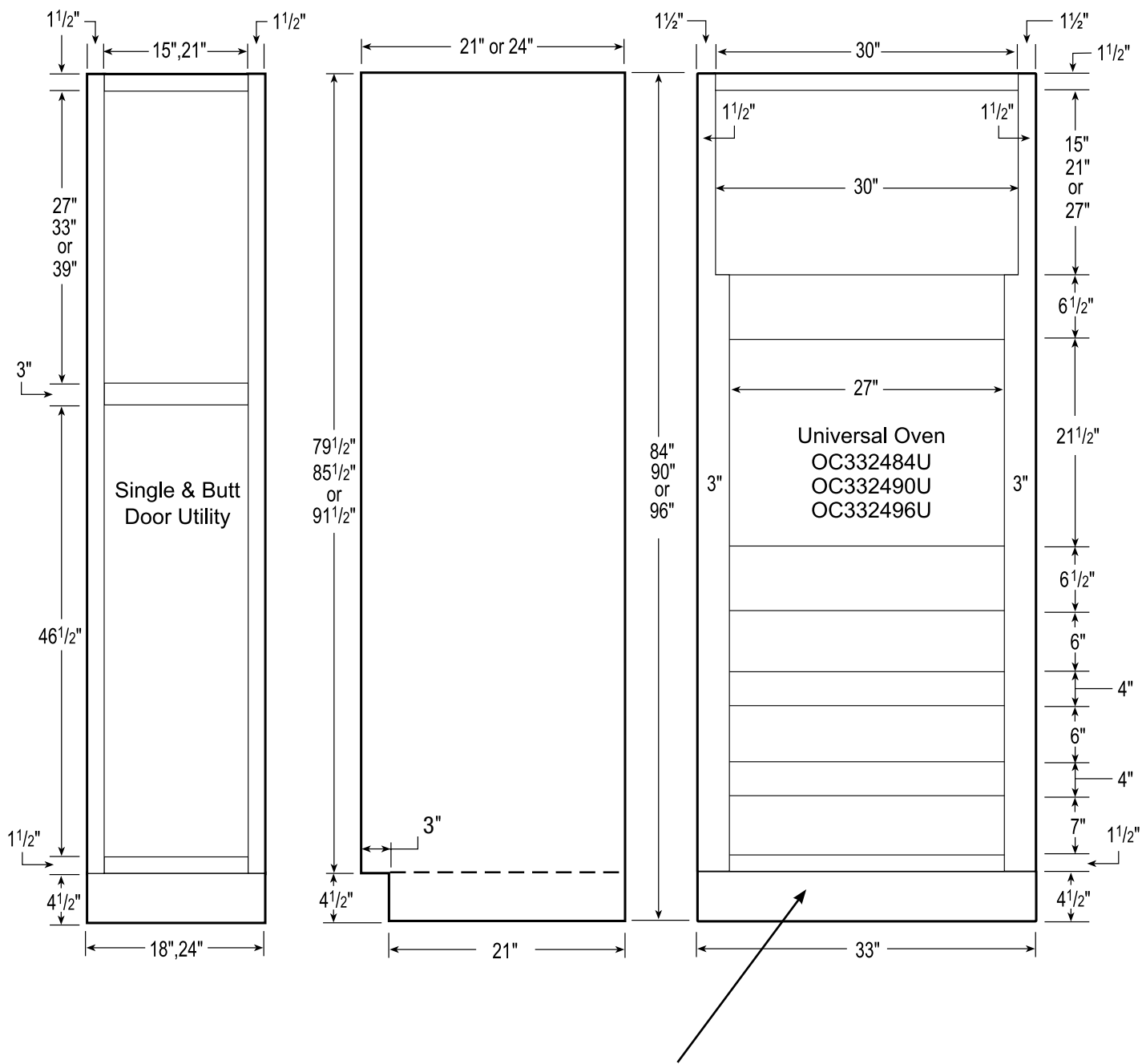
- Contemporary bow pull
- Brushed nickel
- 3-3/4" center (96mm)
- 5-1/4" outside length

Cabinet Frame & Opening Dimensions



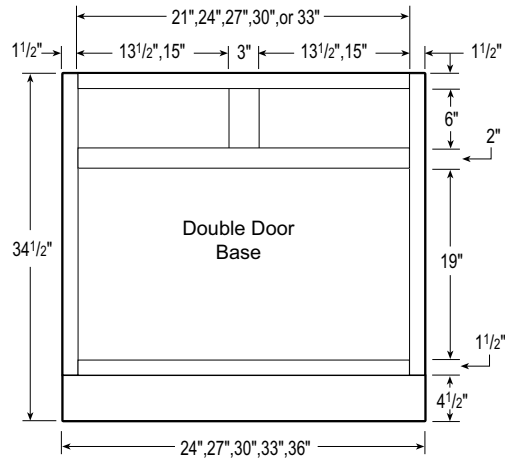
NOTE: B27, B30 have full width drawers

Cabinet Frame & Opening Dimensions

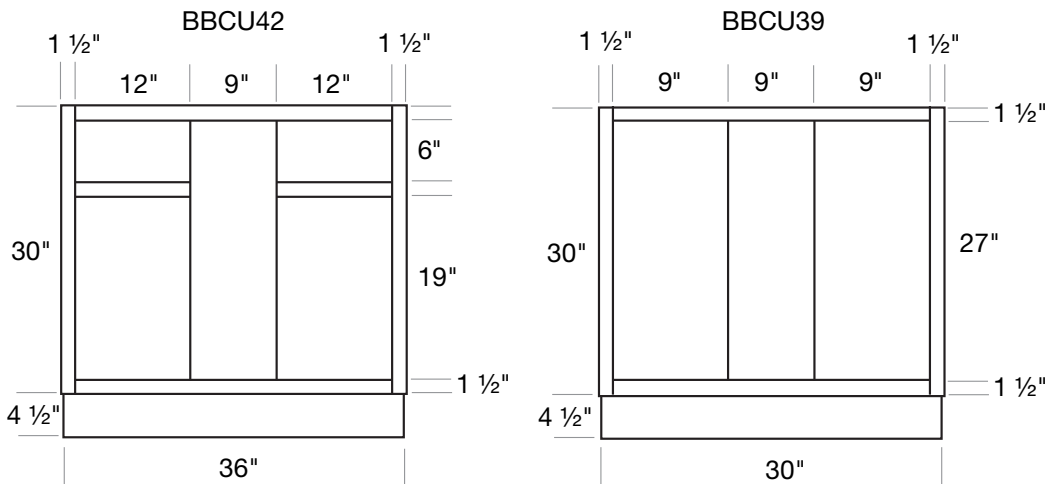


NOTE: 96" TALL CABINETS ARE SUPPLIED WITH LOOSE TOE KICK BOX (EXPOSED SIDES REQUIRE TALL COVER PANELS)

Cabinet Frame & Opening Dimensions



NOTE: B27, B30 have full width drawers



DRAWER BOX INSIDE DIMENSIONS						
CABINET	SHALLOW DRAWER			DEEP DRAWER		
	HEIGHT	DEPTH	WIDTH	HEIGHT	DEPTH	WIDTH
B12, BD12	4-3/8"	19-11/16"	6-7/8"	6-3/4"	19-11/16"	6-7/8"
VB1221, VBD1221	4-3/8"	16-11/16"	6-7/8"	6-3/4"	16-11/16"	6-7/8"
B15, BBCU42, BD15	4-3/8"	19-11/16"	9-7/8"	6-3/4"	19-11/16"	9-7/8"
VB1521, VBD1521	4-3/8"	16-11/16"	9-7/8"	6-3/4"	16-11/16"	9-7/8"
B18, BD18	4-3/8"	19-11/16"	12-7/8"	6-3/4"	19-11/16"	12-7/8"
VB1821, VBD1821	4-3/8"	16-11/16"	12-7/8"	6-3/4"	16-11/16"	12-7/8"
B21	4-3/8"	19-11/16"	15-7/8"	N/A	N/A	N/A
B24, BD24	4-3/8"	19-11/16"	18-7/8"	6-3/4"	19-11/16"	18-7/8"
VB2421	4-3/8"	16-11/16"	18-7/8"	N/A	N/A	N/A
B27	4-3/8"	19-11/16"	21-7/8"	N/A	N/A	N/A
B30, BD30	4-3/8"	19-11/16"	24-7/8"	6-3/4"	19-11/16"	24-7/8"
VB3021	4-3/8"	16-11/16"	24-7/8"	N/A	N/A	N/A
VBD3021	4-3/8"	16-11/16"	24-7/8"	6-3/4"	16-11/16"	24-7/8"
B33	4-3/8"	19-11/16"	11-1/4"	N/A	N/A	N/A
B36, BD36	4-3/8"	19-11/16"	12-7/8"	6-3/4"	19-11/16"	30-7/8"
VB3621	4-3/8"	16-11/16"	12-7/8"	N/A	N/A	N/A
OC332484U, OC332490U, OC332496U	4-3/8"	19-11/16"	24-7/8"	N/A	N/A	N/A

NEW Decorative & Replacement Door and Drawer Fronts

Wall Cabinets

Cabinet	Front	Qty
W0930	Door0930	1
W1230	Door1230	1
W1530	Door1530	1
W1830	Door1830	1
W2130	Door2130	1
W2430	Door1230	2
W2730	Door1330	2
W3030	Door1530	2
W3330	Door1630	2
W3630	Door1830	2
W0936	Door0936	1
W1236	Door1236	1
W1536	Door1536	1
W1836	Door1836	1
W2136	Door2136	1
W2436	Door1236	2
W2736	Door1336	2
W3036	Door1536	2
W3336	Door1636	2
W3636	Door1836	2
W0942	Door0942	1
W1242	Door1242	1
W1542	Door1542	1
W1842	Door1842	1
W2142	Door2142	1

Cabinet	Front	Qty
W2442	Door1242	2
W2742	Door1342	2
W3042	Door1542	2
W3342	Door1642	2
W3642	Door1842	2
W2412	Door1212	2
W2712	Door1312	2
W3012	Door1512	2
W3312	Door1612	2
W3612	Door1812	2
W2415	Door1215	2
W2715	Door1315	2
W3015	Door1515	2
W3315	Door1615	2
W3615	Door1815	2
W2418	Door1218	2
W2718	Door1318	2
W3018	Door1518	2
W3318	Door1618	2
W3618	Door1818	2
W2424	Door1224	2
W2724	Door1324	2
W3024	Door1524	2
W3324	Door1624	2
W3624	Door1824	2



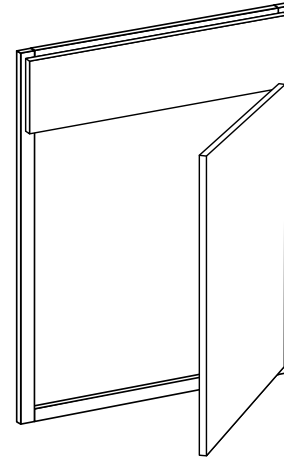
*Frame is not included.

Door fronts come with pre drilled hinge holes. Hinges are not included.

NEW Decorative & Replacement Door and Drawer Fronts

Base Cabinets

Cabinet	Front	Qty
B12FH	Door1230	1
B15FH	Door1530	1
B18FH	Door1830	1
B21FH	Door2130	1
B24FH	Door1230	2
B27FH	Door1330	2
B30FH	Door1530	2
B33FH	Door1630	2
B36FH	Door1830	2
EZR33	Door0830	2
EZR36	Door1130	2



*Frame is not included.

Door fronts come with pre drilled hinge holes. Hinges are not included.

Cabinet	Front	Qty	Front	Qty
B12	Door1221	1	DF128	1
B15	Door1521	1	DF158	1
B18	Door1821	1	DF188	1
B21	Door2121	1	DF218	1
B24	Door1221	2	DF248	1
B27	Door1321	2	DF278	1
B30	Door1521	2	DF308	1
B33	Door1621	2	DF168	2
B36	Door1821	2	DF188	2

Cabinet	Front	Qty	Front	Qty
SB21	Door2121	1	DF218	1
SB24	Door1221	2	DF248	1
SB27	Door1321	2	DF278	1
SB30	Door1521	2	DF308	1
SB33	Door1621	2	DF168	2
SB36	Door1821	2	DF188	2
FSB36	Door1818	2		

Cabinet	Front	Qty	Front	Qty
BD12	DF128	1	DDF1210	2
BD15	DF158	1	DDF1510	2
BD18	DF188	1	DDF1810	2
BD21	DF218	1	DDF2110	2
BD24	DF248	1	DDF2410	2
BD27	DF278	1	DDF2710	2
BD30	DF308	1	DDF3010	2
BD36	DF188	2	DDF3610	2

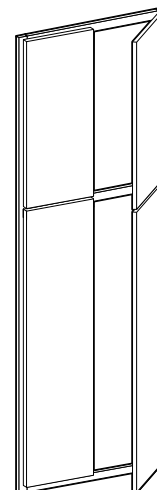
Cabinet	Front	Qty
EZR33	Door0830	2
EZR36	Door1130	2

NEW Decorative & Replacement Door and Drawer Fronts

Tall Cabinets

Cabinet	Front	Qty	Front	Qty
U1884	Door1849	1	Door1830	1
U1890	Door1849	1	Door1836	1
U1896	Door1849	1	Door1842	1
U2484	Door1249	2	Door1230	2
U2490	Door1249	2	Door1236	2
U2496	Door1249	2	Door1242	2

Cabinet	Front	Qty	Front	Qty	Front	Qty
OC3384	Door1618	2	DF338	1	DDF3310	2
OC3390	Door1624	2	DF338	1	DDF3310	2
OC3396	Door1630	2	DF338	1	DDF3310	2



*Frame is not included.

Door fronts come with pre drilled hinge holes. Hinges are not included.

Vanity Cabinets

Cabinet	Front	Qty
VB12	Door1221	1
VB15	Door1521	1
VB18	Door1821	1
VB21	Door2121	1
VB12FH	Door1230	1
VB15FH	Door1530	1
VB18FH	Door1830	1
VB21FH	Door2130	1

Cabinet	Front	Qty	Front	Qty
VBD12	DF128	1	DDF1210	2
VBD15	DF158	1	DDF1510	2
VBD18	DF188	1	DDF1810	2
VBD24	DF248	1	DDF2410	2
VBD30	DF308	1	DDF3010	2

Cabinet	Front	Qty	Front	Qty
VLC182184	Door1849	1	Door1830	1
VLC242184	Door1249	2	Door1230	2



METROPOLITAN S E R I E S

SEMI-CUSTOM KITCHEN AND BATH CABINETRY

Limited Lifetime Warranty

Ideal Cabinetry® (warrantor) warrants to the original consumer purchaser, that all products manufactured or supplied by warrantor will be free from defects in material and workmanship. This warranty is for your lifetime as long as you own the cabinetry, on product used for Residential Purposes only and is not transferable to subsequent owners. Proof of Purchase is required.

This warranty does not cover damage resulting from normal wear, accident, misuse or lack of reasonable and necessary maintenance and service; nor does it warranty the improper installation or unauthorized repair, alteration, or modification or defects in the product when the product is installed. This warranty is limited to the repair or replacement of the defective part at the sole discretion of warrantor. Warranty is limited to Home Decorators Collection Metropolitan Series branded products excluding all electrical components: Excluded items may carry separate warranties as provided directly by the of these products.

It is our option to provide repair parts or replace with functionally equivalent product. Return of product may be required for replacements. Such repair parts or replacement shall be at warrantor's expense, but customer shall bear all other expenses, including, but not limited to, cost of removal, transportation, re-installation, communication and any special service required by customer such as, overtime labor, etc.

Natural woods and finishes vary in color, grain pattern and exhibit color changes over time. Cabinets may darken or lighten with age due to exposure to certain environmental conditions including but not limited to sunlight, moisture, household cleaners, smoke, etc. Painted cabinets may show cracking at seams. These variations are considered the natural characteristics of the material and finishes and are not covered under this warranty.

In the event of a warranted product performance issue, submit request including proof of purchase documentation, specific description of warranty issue (include photos) in writing to:

Warranty Department
210 Century Boulevard
Bartow, FL 33830

Due to nature of materials and finishes Ideal Cabinetry cannot guarantee warranty replacement will be an exact match.

Ideal Cabinetry reserves the right to alter design, specifications and material without obligation to make changes to product previously manufactured.

EXCEPT TO THE EXTENT PROVIDED BY APPLICABLE LAW, ALL IMPLIED WARRANTIES, INCLUDING WARRANTIES OF MERCHANTABILITY AND FITNESS FOR A PARTICULAR PURPOSE, ARE LIMITED IN DURATION TO THE SHORTER OF THE PERIOD PROVIDED BY LAW OR THE PERIOD OF THIS WARRANTY, AND UNDER NO CIRCUMSTANCE SHALL HOME DECORATORS COLLECTION BE LIABLE FOR INCIDENTAL OR CONSEQUENTIAL DAMAGES SUSTAINED IN CONNECTION WITH THE PRODUCT. THE EXPRESS WARRANTY ABOVE CONSTITUTES THE ENTIRE WARRANTY AND IS IN LIEU OF ALL OTHERS EXPRESSED OR IMPLIED.

Some states do not allow the exclusion or limitation of incidental or consequential damages, or limitation on how long an implied warranty lasts, therefore, the above limitations or exclusions may not apply to you. This warranty gives you specific legal rights, and you may also have other rights, which vary from state to state.

INDEMNITY

Ideal Cabinetry shall not be liable for either its failure to perform or its delays in performance hereunder arising out of or resulting from causes beyond its control, including but not limited to, acts of God, acts of Representation, acts of Government, wars, fires, floods, epidemics, quarantine, strike, freight embargoes, weather or default by suppliers due to any such causes.

HOME DECORATORS COLLECTION



High Gloss White

METROPOLITAN S E R I E S

SEMI-CUSTOM KITCHEN & BATH CABINETRY

Have Questions? Need Design Help?

 [HDCkitchens.com](https://www.HDCkitchens.com)  [homerdesigntools.com](https://www.homerdesigntools.com)  866-373-9131

Monday-Friday 9 A.M. to 8 P.M. EST | Saturday 9 A.M. to 6 P.M. EST

October 2023



Member
NKBA

LIFETIME
Limited
Warranty

CARB2
compliant 

Instant Kitchen Estimator



KCMA



CARB2 compliant



HDC-METRO-SPECBOOK-1023