

HOME
DECORATORS
COLLECTION

KITCHEN & BATH CABINETS

Semi Custom | Ships in 2 Days* or Less

*Express Painted Pearl Gray
with Pacific White*



2 DAY* EXPRESS



SPECIFICATION GUIDE

Ships in 2 Days* or Less | Hundreds of Sizes | Plywood Cabinetry
Soft Close Doors & Drawers | Premium Painted Finish

For use with 20/20 catalogs: HDC_XPRS, HDC_XPR2

 HDCKitchens.com  844-484-7843 *2 Business Days

HDCKitchens.com



HomerDesignTools.com



Exclusively at





Kitchen & Bath Cabinetry

Limited Lifetime Warranty

Ideal Cabinetry® (warrantor) warrants to the original consumer purchaser, that all products manufactured or supplied by warrantor will be free from defects in material and workmanship. This warranty is for your lifetime as long as you own the cabinetry, on product used for Residential Purposes only and is not transferable to subsequent owners. Proof of Purchase is required.

This warranty does not cover damage resulting from normal wear, accident, misuse or lack of reasonable and necessary maintenance and service; nor does it warranty the improper installation or unauthorized repair, alteration, or modification or defects in the product when the product is installed. This warranty is limited to the repair or replacement of the defective part at the sole discretion of warrantor. Warranty is limited to Home Decorators Collection branded products excluding all electrical components: Excluded items may carry separate warranties as provided directly by the manufacturer of these products.

It is our option to provide repair parts or replace with functionally equivalent product. Return of product may be required for replacements. Such repair parts or replacement shall be at warrantor's expense, but customer shall bear all other expenses, including, but not limited to, cost of removal, transportation, re-installation, communication and any special service required by customer such as, overtime labor, etc.

Natural woods and finishes vary in color, grain pattern and exhibit color changes over time. Cabinets may darken or lighten with age due to exposure to certain environmental conditions including but not limited to sunlight, moisture, household cleaners, smoke, etc. Painted cabinets may show cracking at seams. These variations are considered the natural characteristics of the material and finishes and are not covered under this warranty.

In the event of a warranted product performance issue, submit request including proof of purchase documentation, specific description of warranty issue (include photos) in writing to:

Warranty Department
210 Century Boulevard
Bartow, FL 33830

Due to nature of materials and finishes Ideal Cabinetry cannot guarantee warranty replacement will be an exact match.

Ideal Cabinetry reserves the right to alter design, specifications and material without obligation to make changes to product previously manufactured.

EXCEPT TO THE EXTENT PROVIDED BY APPLICABLE LAW, ALL IMPLIED WARRANTIES, INCLUDING WARRANTIES OF MERCHANTABILITY AND FITNESS FOR A PARTICULAR PURPOSE, ARE LIMITED IN DURATION TO THE SHORTER OF THE PERIOD PROVIDED BY LAW OR THE PERIOD OF THIS WARRANTY, AND UNDER NO CIRCUMSTANCE SHALL HOME DECORATORS COLLECTION BE LIABLE FOR INCIDENTAL OR CONSEQUENTIAL DAMAGES SUSTAINED IN CONNECTION WITH THE PRODUCT. THE EXPRESS WARRANTY ABOVE CONSTITUTES THE ENTIRE WARRANTY AND IS IN LIEU OF ALL OTHERS EXPRESSED OR IMPLIED.

Some states do not allow the exclusion or limitation of incidental or consequential damages, or limitation on how long an implied warranty lasts, therefore, the above limitations or exclusions may not apply to you. This warranty gives you specific legal rights, and you may also have other rights, which vary from state to state.

INDEMNITY

Ideal Cabinetry shall not be liable for either its failure to perform or its delays in performance hereunder arising out of or resulting from causes beyond its control, including but not limited to, acts of God, acts of Representation, acts of Government, wars, fires, floods, epidemics, quarantine, strike, freight embargoes, weather or default by suppliers due to any such causes.

Table of Contents

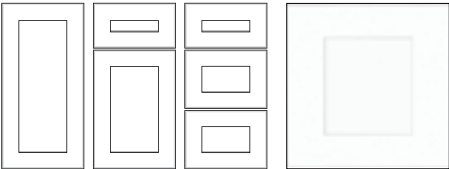


Door Styles	2
Cabinet Construction	3
Finished End.....	4
Wall Cabinets	5-8
Base Cabinets	9-13
Tall Cabinets	14-16
Vanity Cabinets.....	17-19
Accessories.. ..	20-21
Decorative Molding	22-23
<i>(includes crowns and light rails)</i>	
Decorative Hardware.....	24-25
<i>(includes handles and knobs)</i>	
Cabinet Frame & Opening Dimensions	26 -28

PLEASE NOTE: Line drawings are artistic representations of products for general dimensioning purposes. These should not be relied upon for accurate product appearance. Please consult the website or a designer if you have any questions or specific design requirements. Photography is for illustration purposes. Actual colors may vary slightly due to the printing process. We recommend ordering a sample door to see the color and finish you like for yourself.



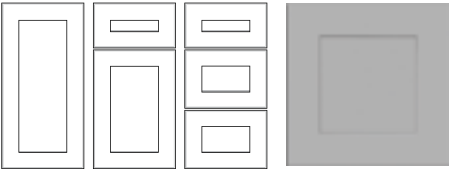
Express Painted Pacific White (XPW)



- 3/4" thick x 3" wide MDF Shaker framed doors with 5/8" thick solid MDF center panels
- 3/4" thick x 3" wide MDF Shaker framed drawer fronts with 5/8" thick solid MDF recessed center panels
- Soft close hinges & full extension drawers with soft close
- Decorative hardware required

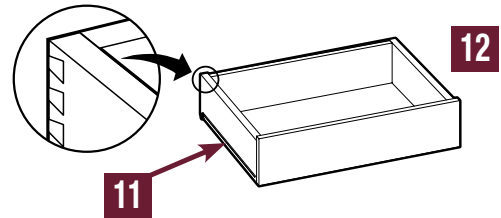
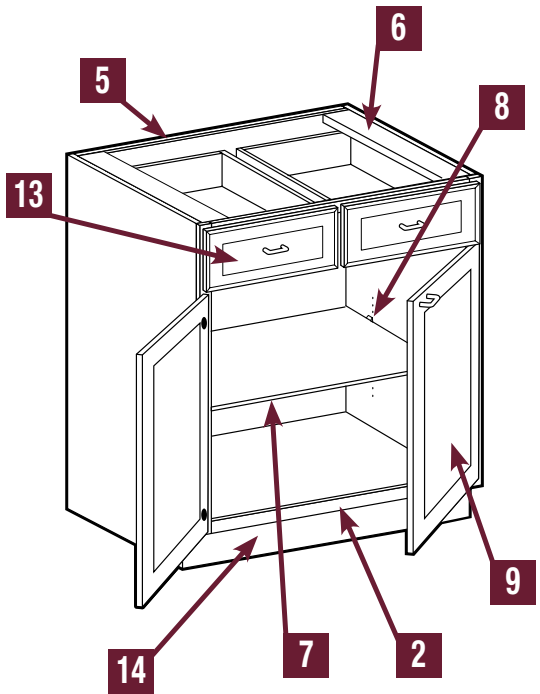
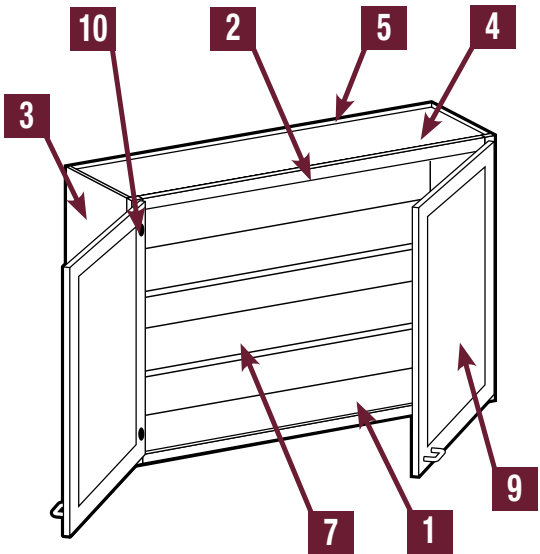


Express Painted Pearl Gray (XPG)



- 3/4" thick x 3" wide MDF Shaker framed doors with 5/8" thick solid MDF center panels
- 3/4" thick x 3" wide MDF Shaker framed drawer fronts with 5/8" thick solid MDF recessed center panels
- Soft close hinges & full extension drawers with soft close
- Decorative hardware required

All of our painted door styles feature solid wood painted face frames. As with any painted wood surface, expansion and contraction with changes in climate may cause fractures in the paint surface at joints. This is an acceptable characteristic and will vary based on climate conditions. In addition, there may be a slight color shift over time due to continued exposure to both natural and artificial light.



1	INTERIOR	Natural birch laminate provides a durable, wipe clean finish.
2	FACE FRAME	1½" wide x 3/4" thick solid hardwood pocket screwed.
3	END PANELS	1/2" thick CARB2 plywood, exterior laminate is color matched to the face frame.
4	FLOOR & CEILING	1/2" thick CARB2 plywood, both sides captured by end panels.
5	BACK PANELS	1/2" thick CARB2 plywood with natural birch laminate interior and raw exterior. The 'clipped' back panels on Wall Angle and Easy Reach Corner cabinets will be 1/4" plywood.
6	"I-BEAM" SUPPORTS	1/2" thick CARB2 plywood, full depth braces provide stability and support for countertop attachment.
7	ADJUSTABLE SHELVES	3/4" thick CARB2 plywood finished with natural birch laminate and matching edgebanding. Base and wall adjustable shelves are full depth. 75 lb. weight capacity
8	SHELF SUPPORTS	Clear, high strength plastic with locking top tab to prevent shelf tip. Provides easy shelf adjustment.
9	DOORS	Stylish, full-overlay doors manufactured using furniture grade MDF. See page 2 for details.
10	HINGES	Fully concealed 110° opening Soft Close hinges with 6-way adjustment for ease of alignment.
11	RUNNERS/GLIDES	Drawers feature smooth gliding, full extension, ball bearing runners with Soft Closing shocks that engage when drawer is 1" from closed. Interior roll out trays have epoxy coated side mount runners. Both are rated for 100 lb. static and 75 lb. dynamic loads.
12	DRAWERS & ROLL-OUT TRAYS	5/8" thick finger jointed hardwood four sided dovetail box construction, finished with a clear top coat and a 1/4" thick captured plywood floor. 75 lb. weight capacity
13	DRAWER FRONTS	Stylish full overlay drawer fronts. See page 2 for details. For Standard kitchen base cabinets, the drawer front is 8" high. For drawer base cabinets, the top drawer front is 8" high and the bottom two drawer fronts are 10 1/2" high.
14	INTEGRAL TOE KICK	1/2" thick plywood secured between end panels. Provides solid backing for installation of Matching Toe Kick (MTK8) or other materials such as ceramic, vinyl, etc.



FINISHED END



Standard End Panels are 1/2" thick CARB2 plywood. Exterior laminate matches face frame finish.



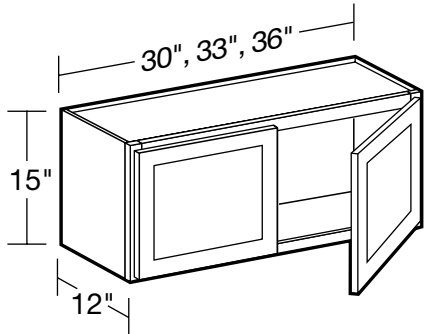
PLAY
DESIGN TIP

WALL CABINET CODING

STANDARD (12" DEEP)			REFRIGERATOR (24" DEEP)			
W	30	30	W	36	24	18
Cabinet Code	Cabinet Width	Cabinet Height	Cabinet Code	Cabinet Width	Cabinet Depth	Cabinet Height

- All wall cabinets are 12" deep unless otherwise noted. Refrigerator wall cabinets are 24" deep.
- Cabinet depth does not include door thickness
- Products are available in all door styles unless stated otherwise
- Standard cabinet exterior is color matched to face frame
- Soft close hinges

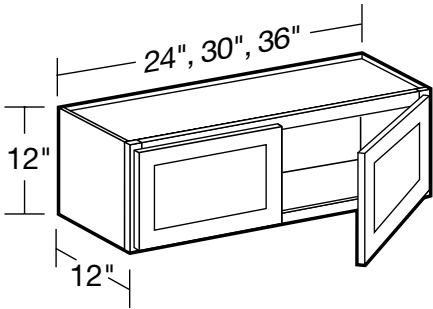
15" High Double Door



W3015
W3315
W3615

- No adjustable shelf

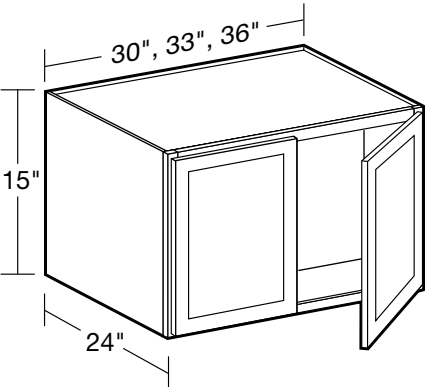
12" High Double Door



W2412
W3012
W3612

- No adjustable shelf

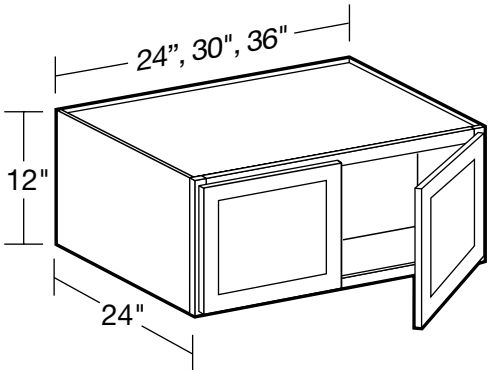
15" High x 24" Deep Double Door



W302415
W332415
W362415

- No adjustable shelf
- Must be installed between two cabinets, cabinet and wall, or supported by refrigerator panels (RP)

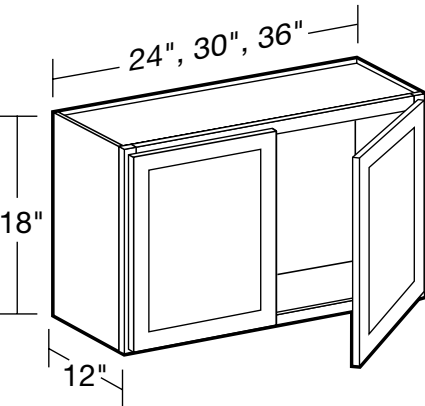
12" High x 24" Deep Double Door



W242412
W302412
W362412

- No adjustable shelf
- Must be installed between two cabinets, cabinet and wall, or supported by refrigerator panels (RP)

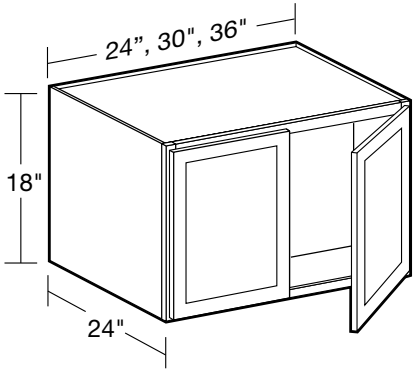
18" High Double Door



W2418
W3018
W3618

- No adjustable shelf

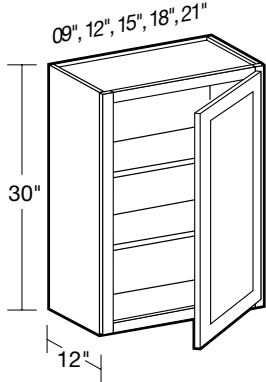
18" High x 24" Deep Double Door



W242418
W302418
W362418

- No adjustable shelf
- Must be installed between two cabinets, cabinet and wall, or supported by refrigerator panels (RP)

30" High Single Door

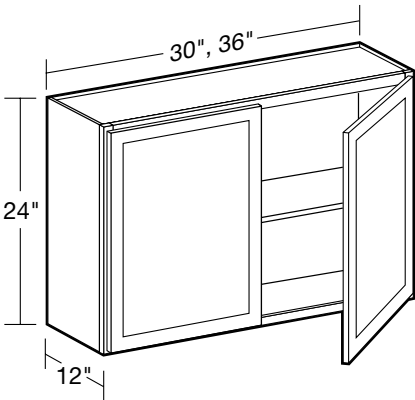


- Two adjustable shelves

SPECIFY
RIGHT or LEFT HINGED

W0930
W1230
W1530
W1830
W2130

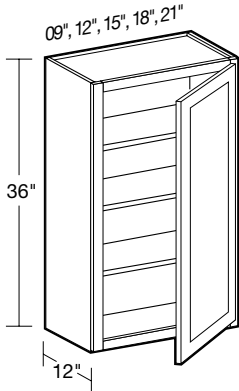
24" High Double Door



W3024
W3624

- One adjustable shelf

36" High Single Door

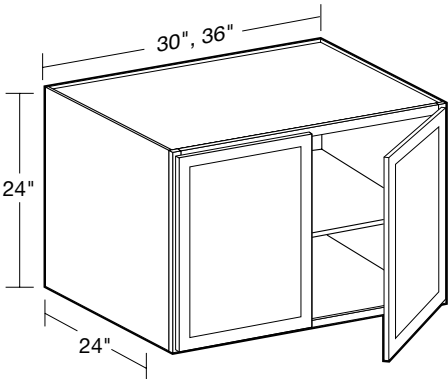


- Three adjustable shelves

SPECIFY
RIGHT or LEFT HINGED

W0936
W1236
W1536
W1836
W2136

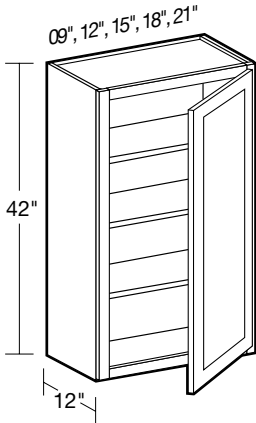
24" High x 24" Deep Double Door



W302424
W362424

- One adjustable shelf
- Must be installed between two cabinets, cabinet and wall, or supported by refrigerator panels (RP)

42" High Single Door

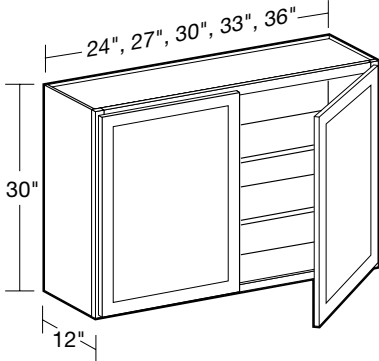


- Three adjustable shelves

SPECIFY
RIGHT or LEFT HINGED

W0942
W1242
W1542
W1842
W2142

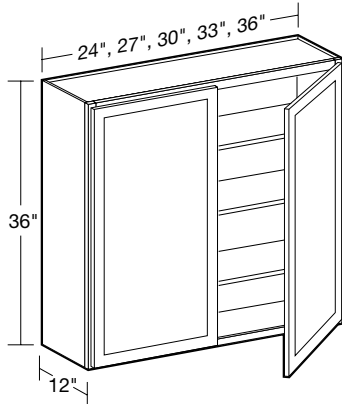
30" High Double Door



- Two adjustable shelves

W2430
W2730
W3030
W3330
W3630

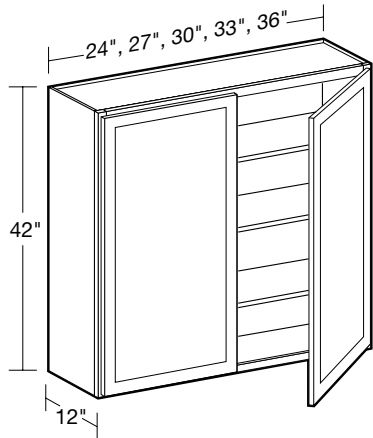
36" High Double Door



- Three adjustable shelves

W2436
W2736
W3036
W3336
W3636

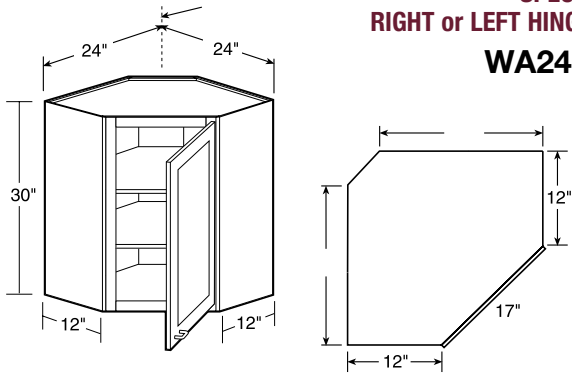
42" High Double Door



- Three adjustable shelves

W2442
W2742
W3042
W3342
W3642

30" High Wall Angle

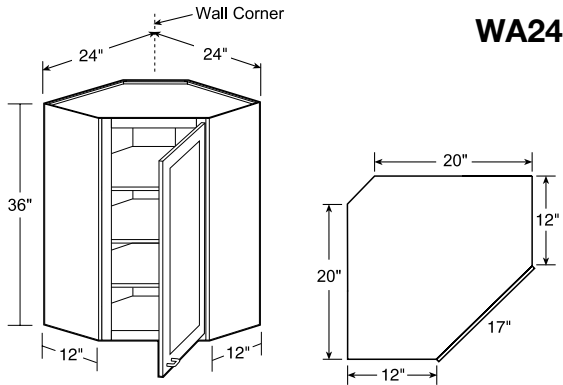


- Two adjustable shelves
- Clip corner back provides clearance for installation
- Clip corner back is 1/4" plywood

SPECIFY
RIGHT or LEFT HINGED

WA2430

36" High Wall Angle

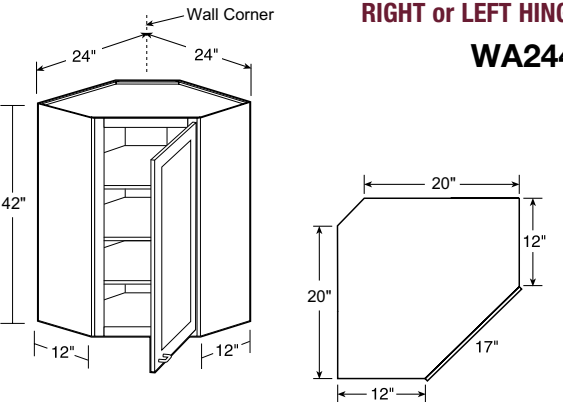


- Three adjustable shelves
- Clip corner back provides clearance for installation
- Clip corner back is 1/4" plywood

SPECIFY
RIGHT or LEFT HINGED

WA2436

42" High Wall Angle

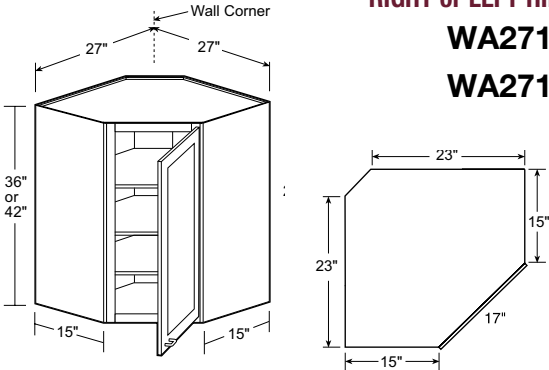


- Three adjustable shelves
- Clip corner back provides clearance for installation
- Clip corner back is 1/4" plywood

SPECIFY
RIGHT or LEFT HINGED

WA2442

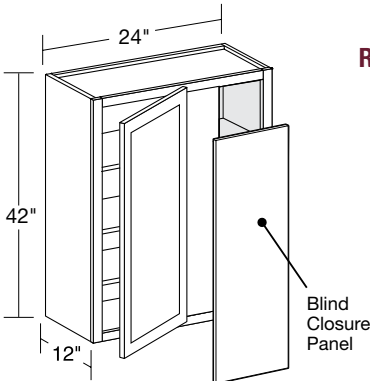
36" and 42" High x 15" Deep Wall Angle



- Three adjustable shelves
- Clip corner back provides clearance for installation
- Clip corner back is 1/4" plywood

SPECIFY
RIGHT or LEFT HINGED
WA271536
WA271542

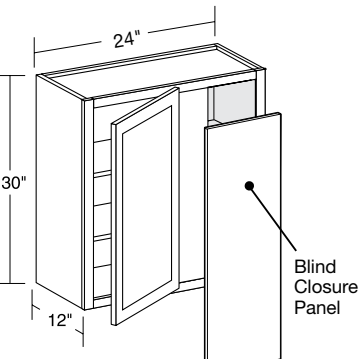
42" High Wall Blind Corner



- Three adjustable shelves
- Indicate R or L for blind side (right shown)
- Cabinet can be pulled for exact fit (see installation chart)
- 3" filler & 3/16" blind closure panel included
- Door width is 11-3/4"

SPECIFY
RIGHT or LEFT BLIND
WBCU2742

30" High Wall Blind Corner

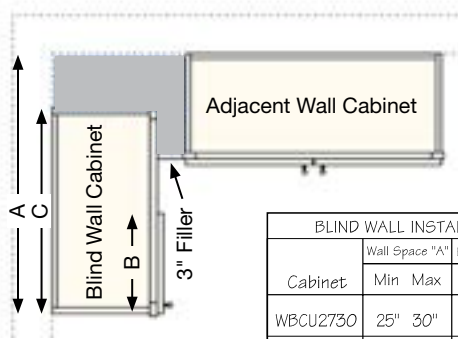


- Two adjustable shelves
- Indicate R or L for blind side (right shown)
- Cabinet can be pulled for exact fit (see installation guide)
- 3" filler & 3/16" blind closure panel included
- Door width is 11-3/4"

SPECIFY
RIGHT or LEFT BLIND
WBCU2730

Blind Corner Installation Guide

*Gray area represents empty space.
Cabinet is designed to be pulled for exact space.

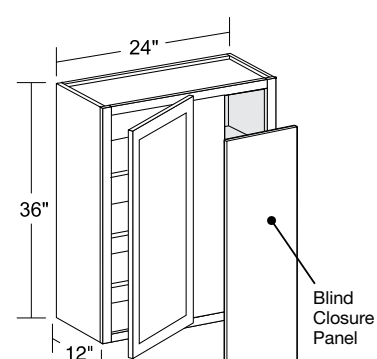


BLIND WALL INSTALLATION GUIDE				
Cabinet	Wall Space "A"		Frame Opening	Cabinet
	Min	Max	Width "B"	Width "C"
WBCU2730	25"	30"	8 7/8"	24"
WBCU2736	25"	30"	8 7/8"	24"
WBCU2742	25"	30"	8 7/8"	24"



PLAY
2020 TIP

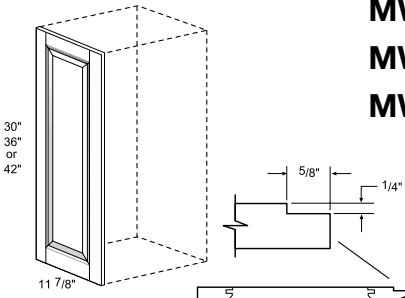
36" High Wall Blind Corner



- Three adjustable shelves
- Indicate R or L for blind side (right shown)
- Cabinet can be pulled for exact fit (see installation guide)
- 3" filler & 3/16" blind closure panel included
- Door width is 11-3/4"

SPECIFY
RIGHT or LEFT BLIND
WBCU2736

Matching Wall End Panels



- 3/4" thick
- Field installation
- Panel is for Left or Right application & fits flush against cabinet sides

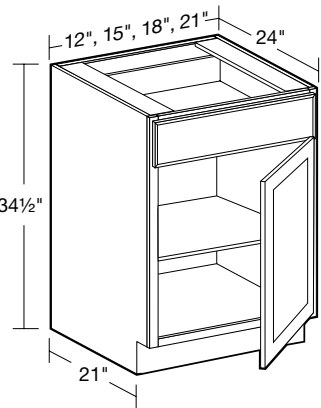
MWEP30
MWEP36
MWEP42

BASE CABINET CODING

B 30 - 2T
Cabinet Code Cabinet Width Customization (2ROTS)

- Standard Base Cabinets are 24" deep and 34 1/2" high
- Desk Height base cabinets are 21" deep and 28 1/2" high
- Cabinet depth does not include door thickness
- Products are available in all door styles unless stated otherwise
- Standard cabinet exterior is color matched to face frame
- Base cabinets are shipped with an unfinished toekick. Finished toekicks in painted MDF must be ordered separately and field installed.
- Soft close hinges & full extension drawers with soft close

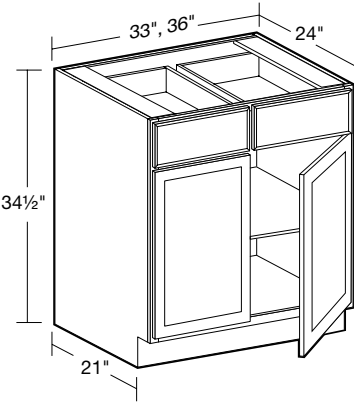
24" Deep Single Door



- One full-depth adjustable shelf

SPECIFY
RIGHT or LEFT HINGED
B12
B15
B18
B21

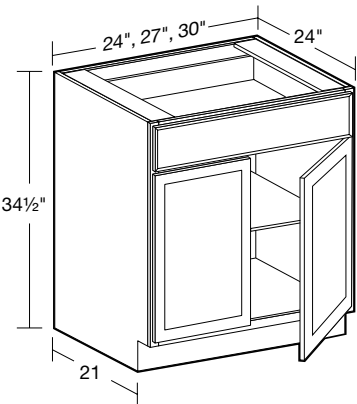
24" Deep Double Door



- One full-depth adjustable shelf

B33
B36

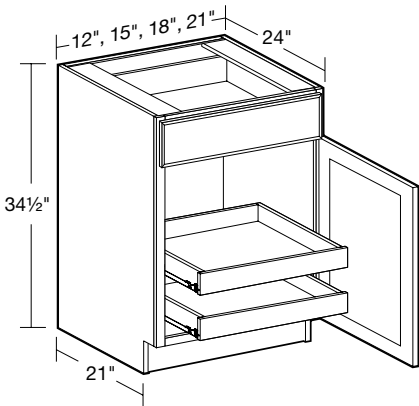
24" Deep Double Door



- One full-depth adjustable shelf

B24
B27
B30

24" Deep Single Door with 2 Roll-Out Trays



- Two full width roll-out trays

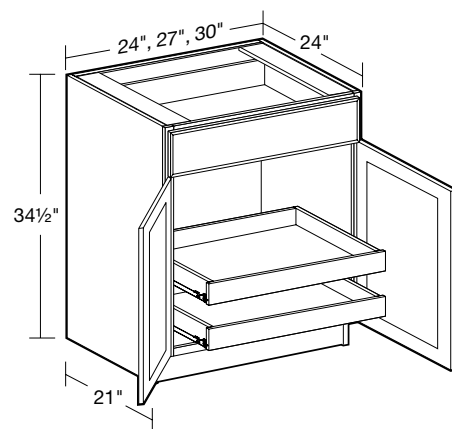
NOTE: Roll-out trays are not full extension, soft close or adjustable

SPECIFY
RIGHT or LEFT HINGED
B12-2T
B15-2T
B18-2T
B21-2T



PLAY
DESIGN TIP

24" Deep Double Door with 2 Roll-Out Trays



- Two full width roll-out trays

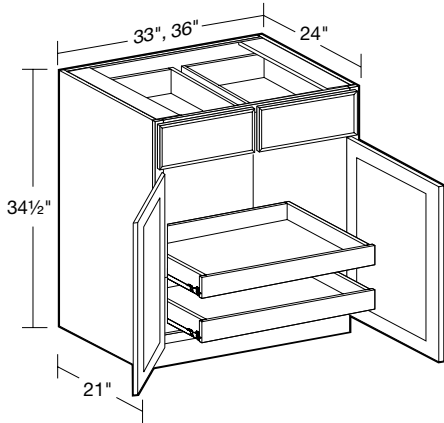
NOTE: Roll-out trays are not full extension, soft close or adjustable

B24-2T
B27-2T
B30-2T



PLAY
DESIGN TIP

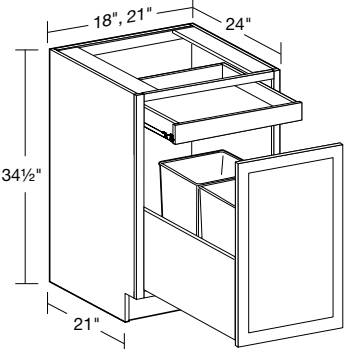
24" Deep Double Door with 2 Roll-Out Trays



B33-2T
B36-2T

- Two full-depth roll-out trays
- NOTE:** Roll-out trays are not full extension, soft close or adjustable

24" Deep DELUXE Double 35 qt. Waste Basket Pullout



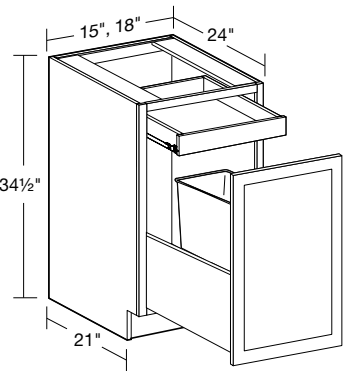
B2DWB18
B2DWB21

- Baskets slide on heavy duty, full extension, Soft Close runners
- Two 35 quart white plastic baskets sit in a dovetailed plywood drawer box
- Baskets are removable
- Basket dimensions: 14"W x 10"D x 18"H
- Top mount roll-out tray for trash bag storage
- **SOFT CLOSE INCLUDED!**



PLAY
DESIGN TIP

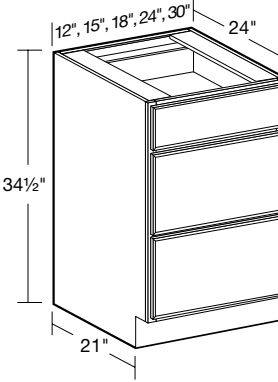
24" Deep DELUXE Single 35 qt. Waste Basket Pullout



B1DWB15
B1DWB18

- Basket slides on heavy duty, full extension, Soft Close runners
- 35 quart white plastic basket sits in a dovetailed plywood drawer box
- Basket is removable
- Basket dimensions: 14"W x 10"D x 18"H
- Top mount roll-out tray for trash bag storage
- **SOFT CLOSE INCLUDED!**

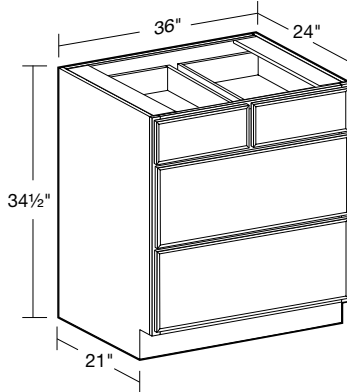
24" Deep Base - 3 Drawers



BD12*
BD15
BD18
BD24
BD30

- One standard top drawer
 - Two deep drawers
- * Maximum drawer handle width for lower drawers is 4" wide for raised panel styles, 5 1/2" wide for recessed panel styles.

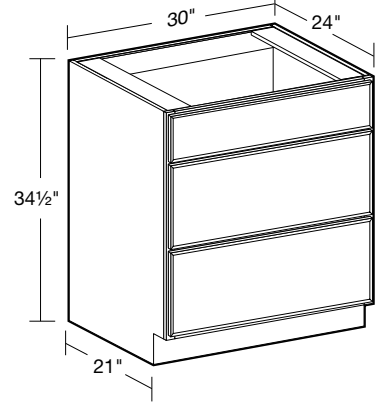
24" Deep Base - 4 Drawers



BD36

- Two standard top drawers
- Two deep drawers

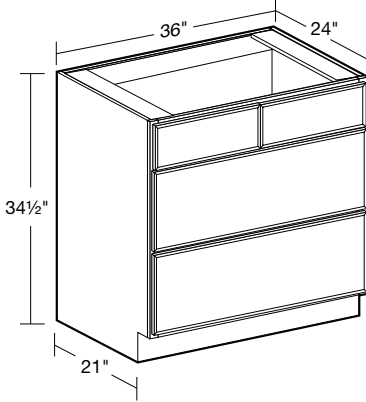
24" Deep Base Cooktop - Single False Front



BCT30

- False top drawer front
- Two deep drawers
- Accepts drop-in cooktop

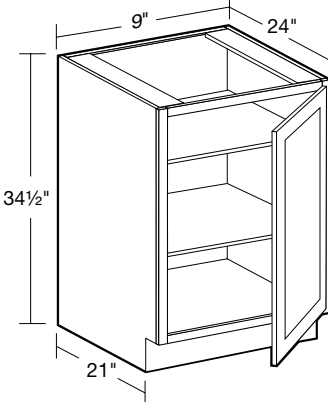
24" Deep Base Cooktop - Double False Front



BCT36

- False top drawer fronts
- Two deep drawers
- Accepts drop-in cooktop

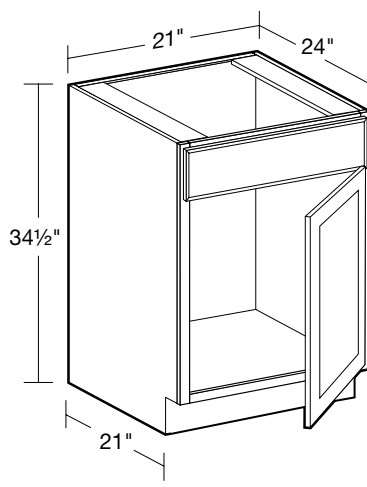
24" Deep Single Full Height Door



**SPECIFY
RIGHT or LEFT HINGED
B09FH**

- Two full-depth adjustable shelves

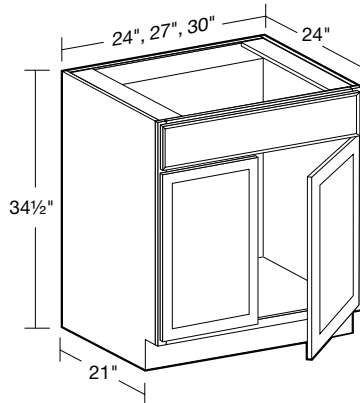
21" Deep Single Door Sink Base



**SPECIFY
RIGHT or LEFT HINGED
SB21**

- Maximum sink cutout 19" wide
- No shelf
- False drawer front

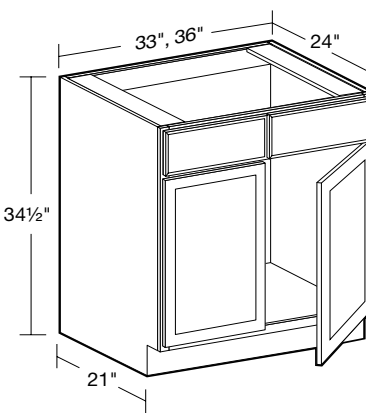
24" Deep Sink Base



SB24
SB27
SB30

- No shelf, false drawer front
- May also be used as drop-in cooktop base

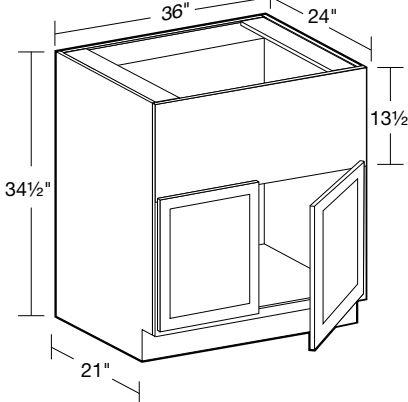
24" Deep Sink Base



SB33
SB36

- No shelf, two false drawer fronts
- May also be used as drop-in cooktop base

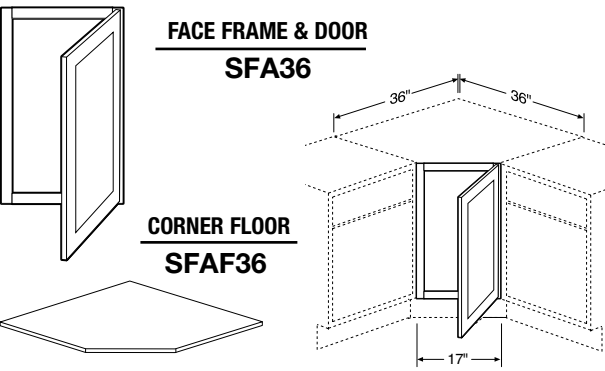
24" Deep Farm Sink Base



FSB36

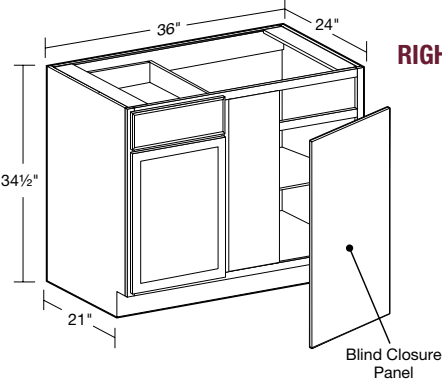
- Front rail is field modified to fit sink
- No shelf

Sink Front Angle



- Angle sink front must be installed between two cabinets
- Frame/door can be installed with hinges on right or left
- Floor support and toe base must be field constructed
- Maximum sink width for this application 25 3/4"

24" Deep Blind Base Corner

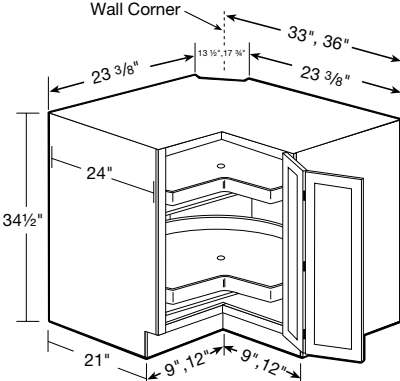


**SPECIFY
RIGHT or LEFT BLIND**

BBCU42

- Indicate R or L for blind side (right shown)
- Cabinet can be pulled for exact fit (see installation chart)
- 3" filler & 3/16" blind closure panel included
- Door width is 14-3/4"

33" and 36" Easy Reach Super Suzan



**SPECIFY
RIGHT or LEFT HINGED**

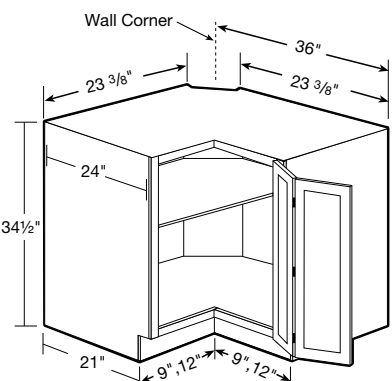
**EZR33SS
EZR36SS**



DESIGN TIP
PLAY

- Two 26" or 28" diameter, pie-cut independently revolving all wood shelves
- Doors open 170 degrees for easy access
- Clip corner is 1/4" plywood
- **SOFT CLOSE DOOR (SCD) OPTION NOT AVAILABLE**

36" Easy Reach

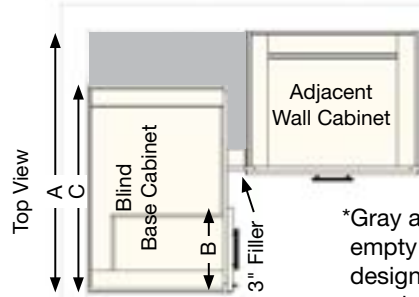


**SPECIFY
RIGHT or LEFT HINGED**

EZR36

- One full-depth straight adjustable shelf (reversible)
- Doors open 170 degrees for easy access
- Clip corner is 1/4" plywood
- **SOFT CLOSE DOOR (SCD) OPTION NOT AVAILABLE**

Blind Base Corner Installation



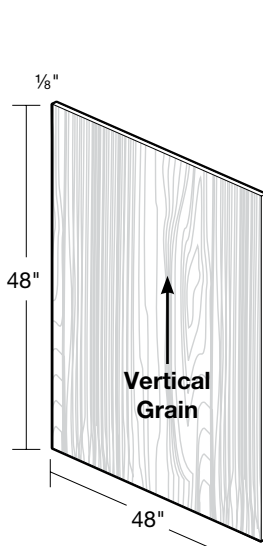
*Gray area represents empty space. Cabinet is designed to be pulled for exact space.

BLIND BASE INSTALLATION GUIDE				
Cabinet	Wall Space "A"		Frame Opening	Cabinet
	Min	Max	Width "B"	Width "C"
BBCU39	39"	42"	8 7/8"	30"
BBCU42	42"	45"	12"	36"



2020 TIP
PLAY

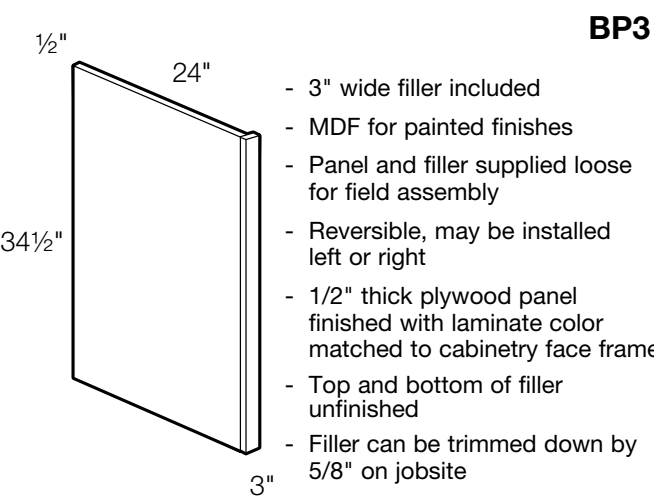
Island Skin



ISK4848

- 1/8" thick plywood finished with laminate color matched to cabinetry face frame
- Field modified and installed

24" Deep End Panel with 3" Wide Filler



BP3

- 3" wide filler included
- MDF for painted finishes
- Panel and filler supplied loose for field assembly
- Reversible, may be installed left or right
- 1/2" thick plywood panel finished with laminate color matched to cabinetry face frame
- Top and bottom of filler unfinished
- Filler can be trimmed down by 5/8" on jobsite

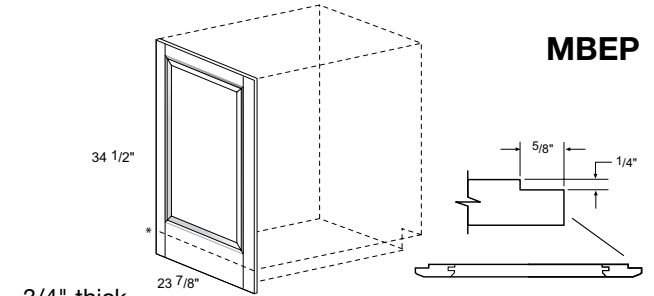
Base Skin



BSK345

- 1/8" thick plywood finished with laminate color matched to cabinetry face frame
- Field modified and installed
- Can be field modified for shallower depth cabinets
- Finish matches cabinetry face frame

Matching Base End Panel



MBEP

- 3/4" thick
- Field installation
- Panel is for Left or Right application & fits flush against cabinet sides

Using a Sink Front Angle



For sufficient dishwasher door clearance and loading/unloading space, a 15" wide base cabinet is recommended for use between a corner sink base and dishwasher.

Designing Around a Range



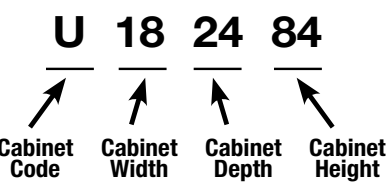
Make sure to give landing space on each side of a cooking appliance when placing in design.

Clearance for Roll Out Trays



Be sure to leave enough clearance for doors to open at least 90 degrees. This will allow the roll out trays to be operated correctly.

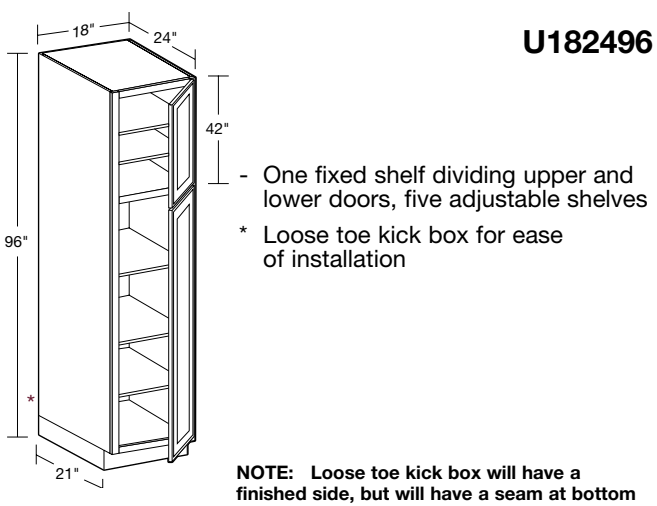
TALL CABINET CODING



- Standard Tall Cabinets are 24" deep
- Add door thickness for total cabinet depth
- Products are available in all door styles unless stated otherwise
- Standard cabinet exterior is color matched to face frame
- Soft close hinges

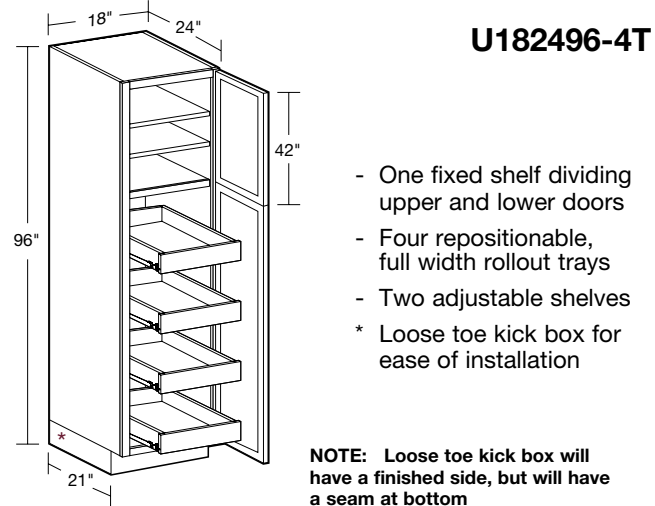
24" Deep Two Door Utility

SPECIFY
RIGHT or LEFT HINGED
U182496



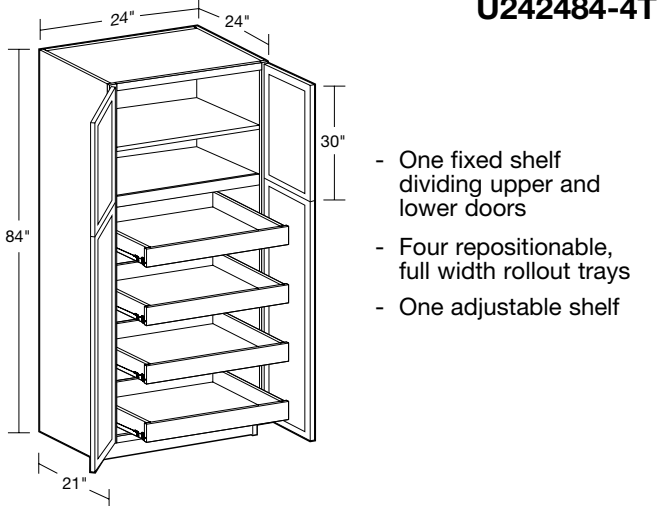
24" Deep Two Door Utility
with Four Rollout Trays

SPECIFY
RIGHT or LEFT HINGED
U182496-4T



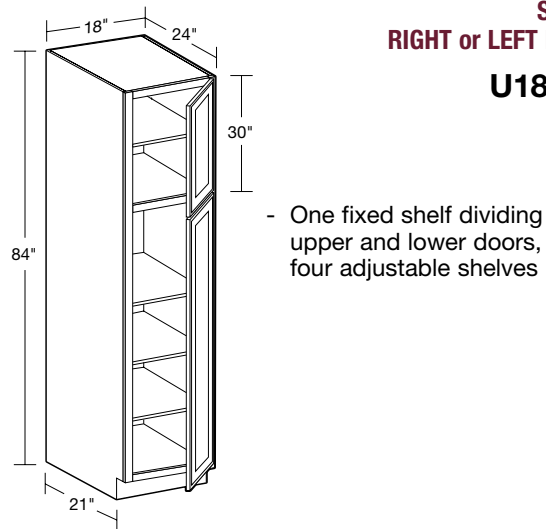
24" Deep Four Butt Door Utility
with Four Rollout Trays

U242484-4T



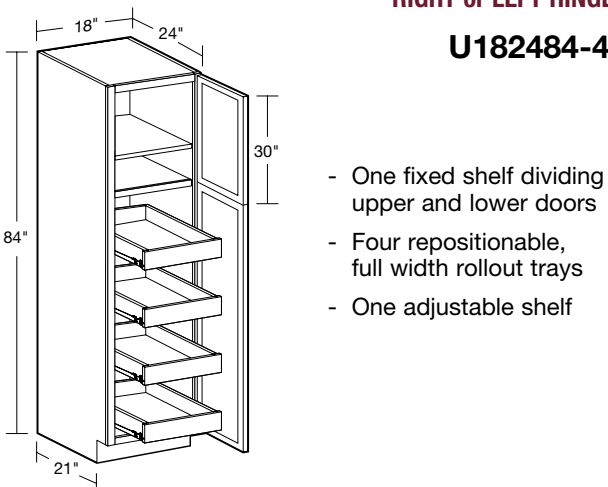
24" Deep Two Door Utility

SPECIFY
RIGHT or LEFT HINGED
U182484



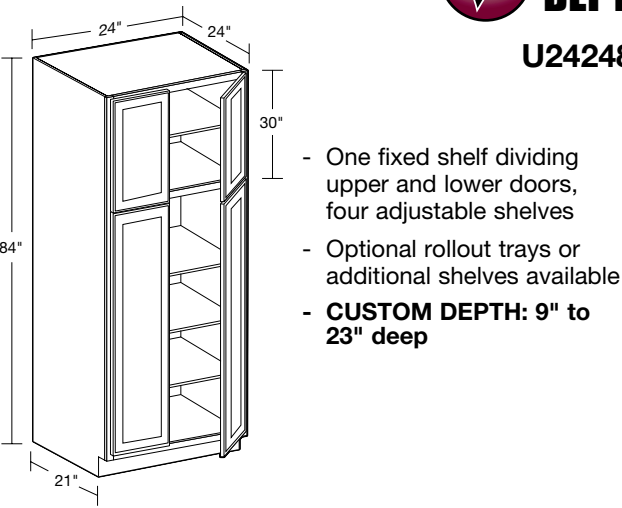
24" Deep Two Door Utility
with Four Rollout Trays

SPECIFY
RIGHT or LEFT HINGED
U182484-4T



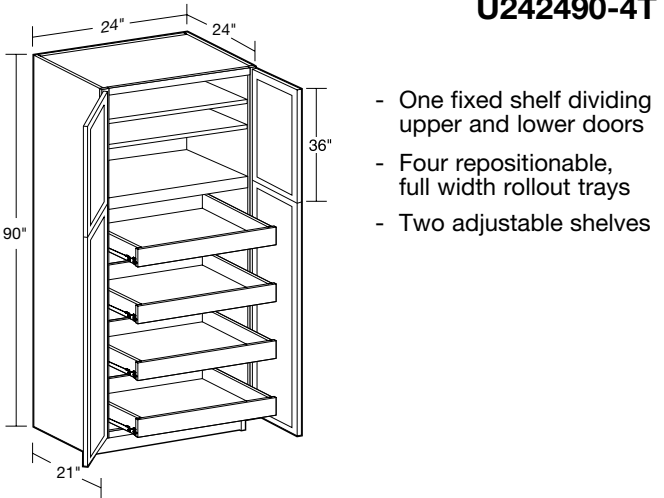
24" Deep Four Butt Door Utility

CUSTOM DEPTH
U242484



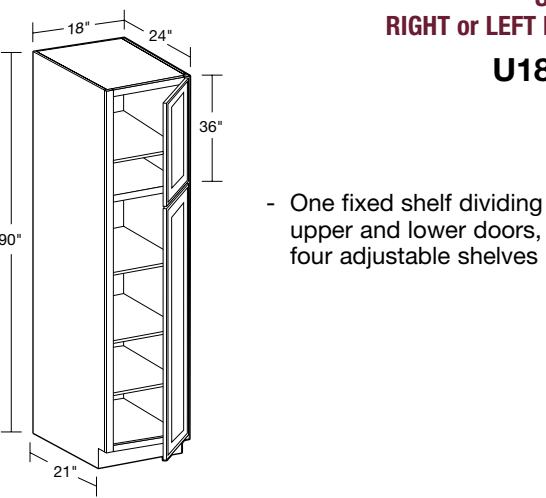
24" Deep Four Butt Door Utility
with Four Rollout Trays

U242490-4T



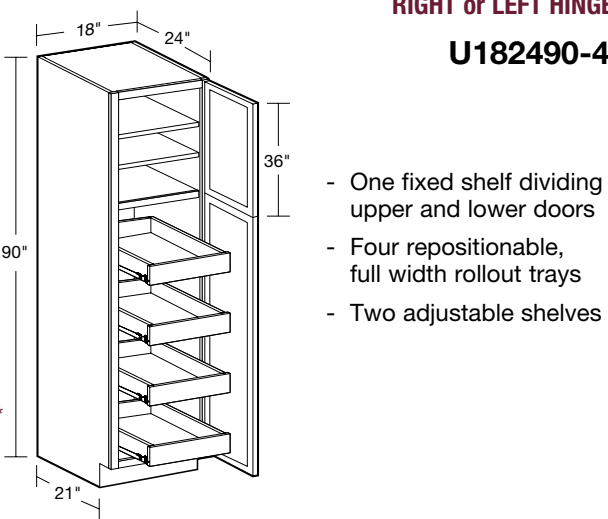
24" Deep Two Door Utility

SPECIFY
RIGHT or LEFT HINGED
U182490



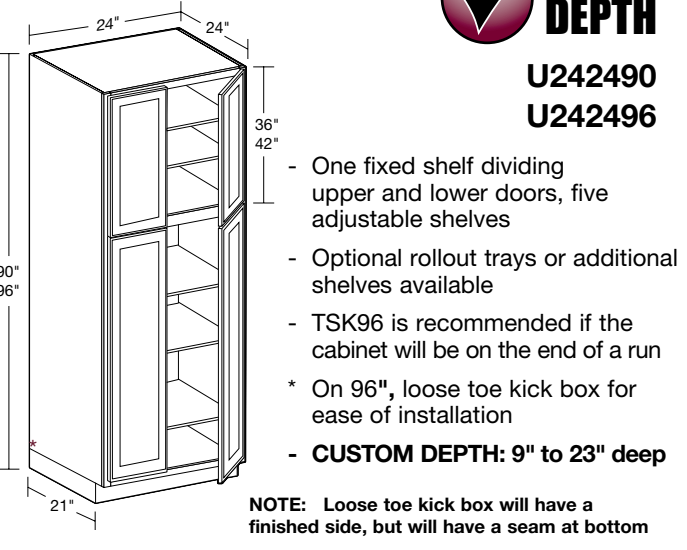
24" Deep Two Door Utility
with Four Rollout Trays

SPECIFY
RIGHT or LEFT HINGED
U182490-4T



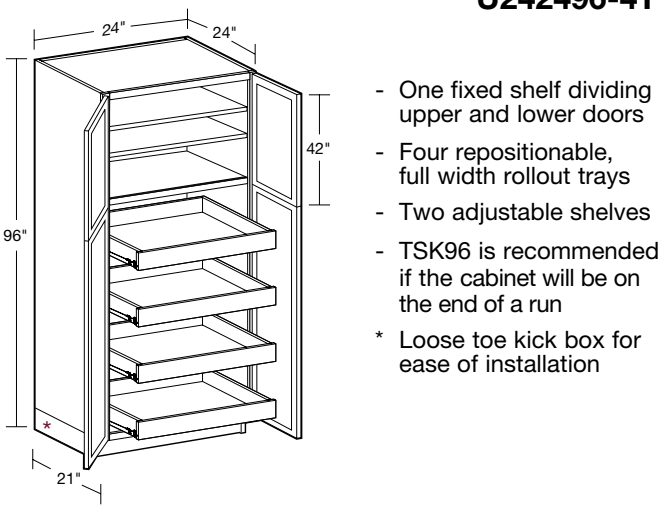
24" Deep Four Butt Door Utility

CUSTOM DEPTH
U242490
U242496

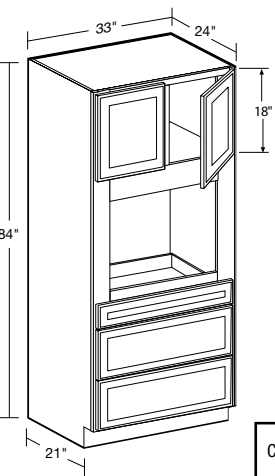


24" Deep Four Butt Door Utility
with Four Rollout Trays

U242496-4T



24" Deep Universal Oven

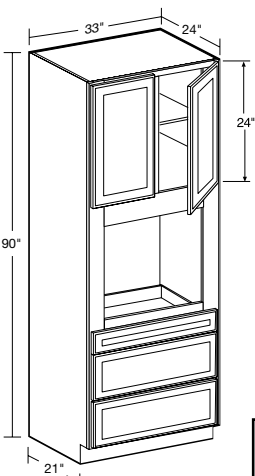


OC332484U

- Consult chart for oven cutout dimensions
- No adjustable shelf
- 3 field removable drawers
- 3" stiles in oven compartment
- For frame openings refer to page 28

CABINET	MIN. CUTOUT WIDTH	MAX CUTOUT WIDTH	MIN. CUTOUT HEIGHT	MAX CUTOUT HEIGHT
OC332484U	27"	31"	22"	60"

24" Deep Universal Oven

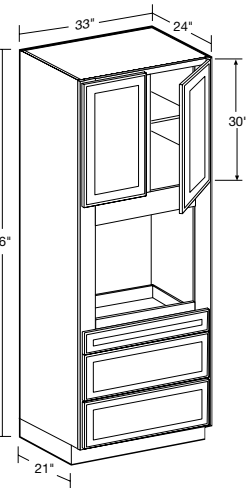


OC332490U

- Consult chart for oven cutout dimensions
- One adjustable shelf
- 3 field removable drawers
- 3" stiles in oven compartment
- For frame openings refer to page 28

CABINET	MIN. CUTOUT WIDTH	MAX CUTOUT WIDTH	MIN. CUTOUT HEIGHT	MAX CUTOUT HEIGHT
OC332490U	27"	31"	22"	60"

24" Deep Universal Oven

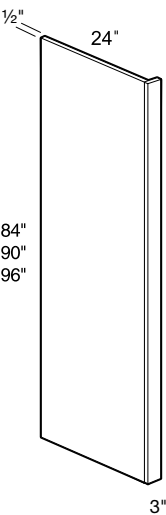


OC332496U

- Consult chart for oven cutout dimensions
- One adjustable shelf
- 3 field removable drawers
- 3" stiles in oven compartment
- * Loose toe kick box for ease of installation
- TSK96 is recommended if the cabinet will be on the end of a run
- For frame openings refer to page 28

CABINET	MIN. WIDTH	MAX WIDTH	MIN. HEIGHT	MAX HEIGHT
OC332496U	27"	31"	22"	69"

24" Deep Refrigerator Panel with 3" Wide Filler



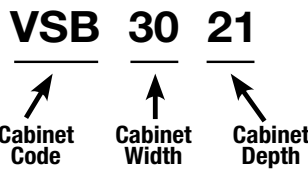
RP384

RP390

RP396

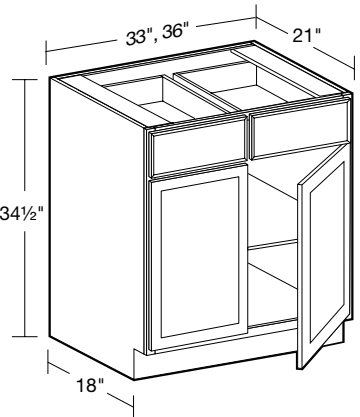
- 3" wide filler included
- MDF for painted finishes
- Panel and filler supplied loose for field assembly
- Reversible, may be installed left or right
- 1/2" thick plywood panel finished with laminate color matched to cabinetry face frame
- Filler can be trimmed down by 5/8" on jobsite

VANITY CABINET CODING



- Standard Vanity Base Cabinets are 21" deep and 34½" high
- Cabinet depth does not include door thickness
- Products are available in all door styles unless stated otherwise
- Standard cabinet exterior is color matched to face frame

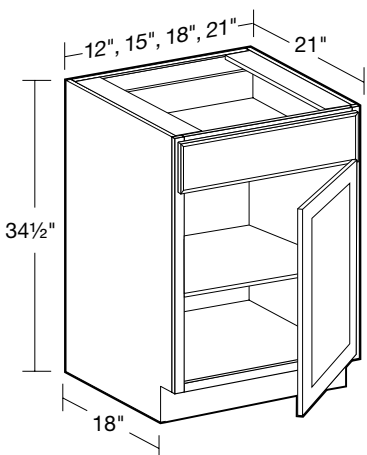
21" Deep Double Door Vanity Base



STANDARD
21" DEPTHS
VB3321
VB3621

- One full depth adjustable shelf
- Two standard drawers

21" Deep Single Door Vanity Base

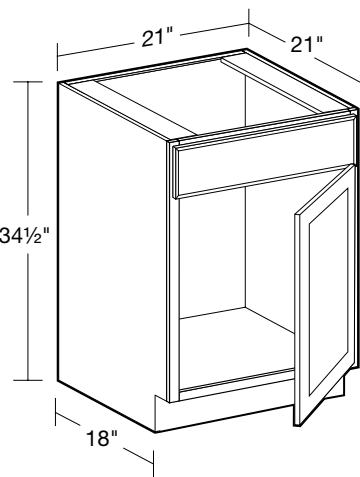


SPECIFY
RIGHT or LEFT HINGED
STANDARD
21" DEPTHS

VB1821 VB1221
VB2121 VB1521

- One full depth adjustable shelf
- One standard drawer

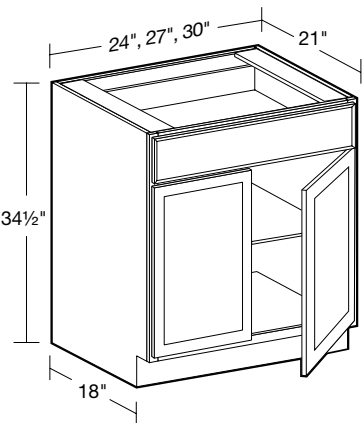
21" Deep Single Door Vanity Sink Base



SPECIFY
RIGHT or LEFT HINGED
VSB2121

- Maximum sink cutout 19" wide
- No shelf
- False drawer front

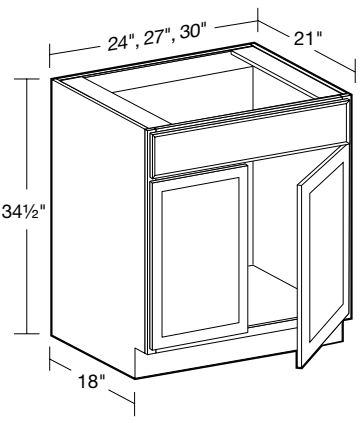
21" Deep Double Door Vanity Base



STANDARD
21" DEPTHS
VB2421
VB2721
VB3021

- One full depth adjustable shelf
- One standard drawer

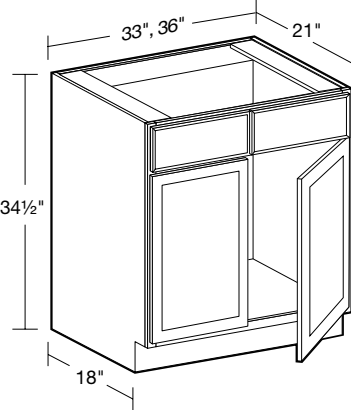
21" Deep Double Door Vanity Sink Base



STANDARD
21" DEPTHS
VSB2421
VSB2721
VSB3021

- No shelf
- False drawer front

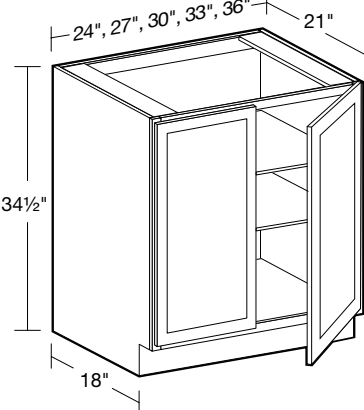
21" Deep Double Door Vanity Sink Base



STANDARD
21" DEPTHS
VS3321
VS3621

- No shelf, two false fronts

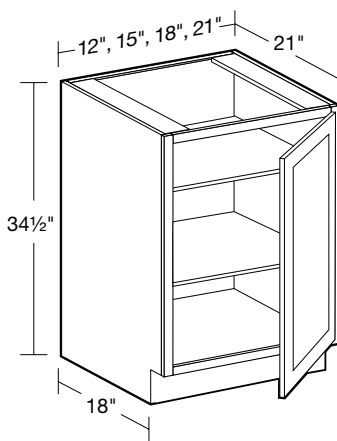
21" Deep Double Full Height Door Vanity Base



STANDARD
21" DEPTHS
VB2421FH
VB2721FH
VB3021FH
VB3321FH
VB3621FH

- Two adjustable shelves

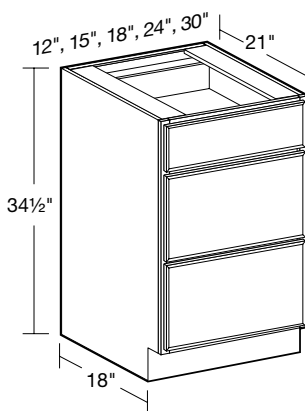
21" Deep Single Full Height Door Vanity Base



**SPECIFY
RIGHT or LEFT HINGED**
STANDARD
21" DEPTHS
VB1221FH
VB1521FH
VB1821FH
VB2121FH

- Two adjustable shelves

21" Deep Vanity Base Drawer

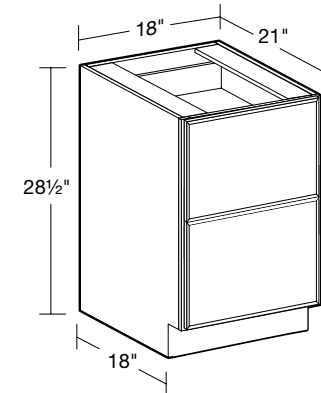


STANDARD
21" DEPTHS
VBD1221*
VBD1521
VBD1821
VBD2421
VBD3021

- One standard drawer
 - Two deep drawers
- * Maximum drawer handle width for lower drawers is 4" wide for raised panel styles, 5 1/2" wide for recessed panel styles.

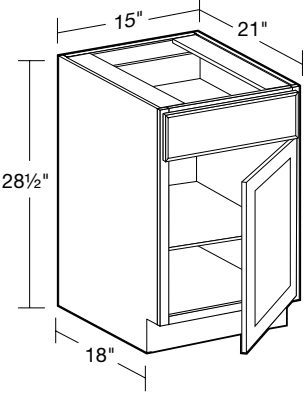
21" Deep Desk Drawer

DDR18



- Two standard drawers*
 - Comfortable height for dressing table or writing surface
- *Does not support hanging files.

21" Deep Desk Door

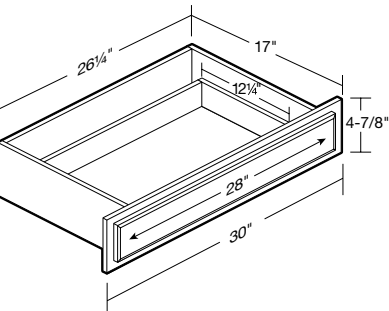


**SPECIFY
RIGHT or LEFT HINGED**
DDO15

- One adjustable shelf
- Comfortable height for dressing table or writing surface

21" Deep Desk Knee Drawer

DKD30

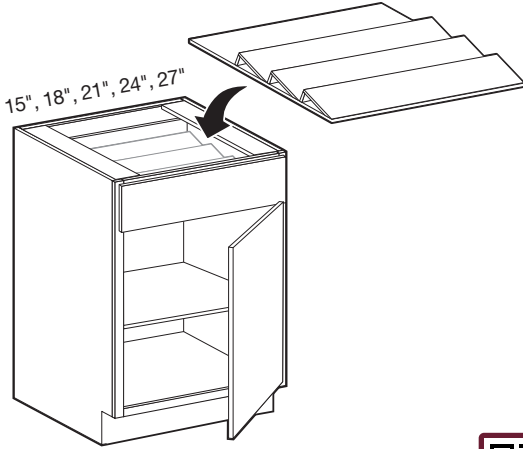


- One full width pencil/cosmetic drawer
- Knee drawer is designed for use between two base cabinets
- Comfortable height for dressing table or writing surface when installed at 28 1/2" height with 1 1/2" thick countertop
- **Slab drawer front all door styles**
- May be trimmed up to 1" on each side

**NOTE: Full Extension
Soft-Close Runner
Not Available**



Spice Drawer Insert



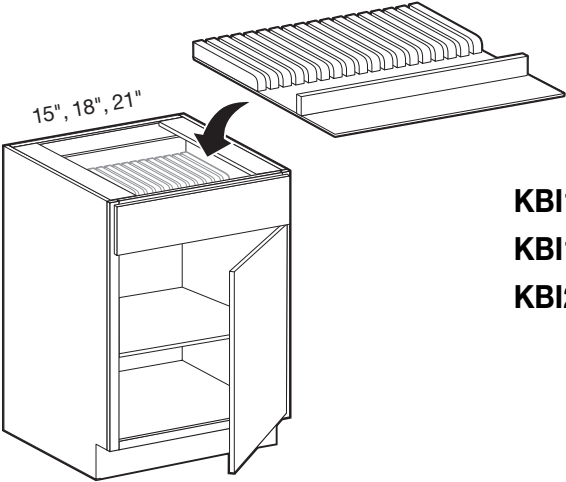
SDI15
SDI18
SDI21
SDI24
SDI27



DESIGN TIP

- Solid hardwood drawer insert
- Three 5" high angled tiers
- Rear 4" deep compartment
- Sized to fit inside 15", 18", 21", 24", 27" wide drawers

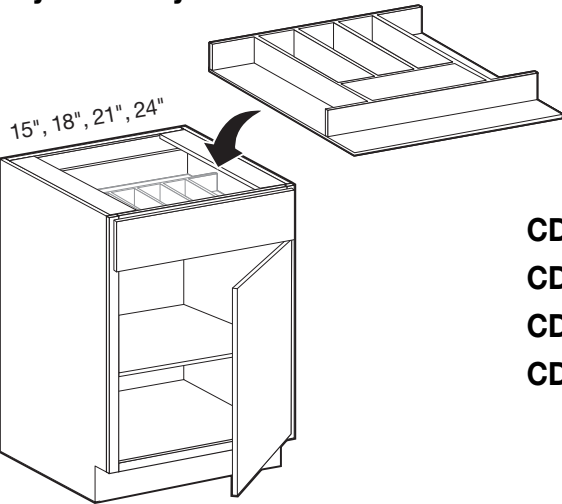
Knife Block Insert



KBI15
KBI18
KBI21

- Solid hardwood drawer insert
- One full width front utensil compartment
- KBI15:** 10 knife slots + utensil compartment (fits B15, BD15)
- KBI18:** 13 knife slots + utensil compartment (fits B18, BD18, B36, BD36)
- KBI21:** 16 knife slots + utensil compartment (fits B21)

Cutlery Divider Tray

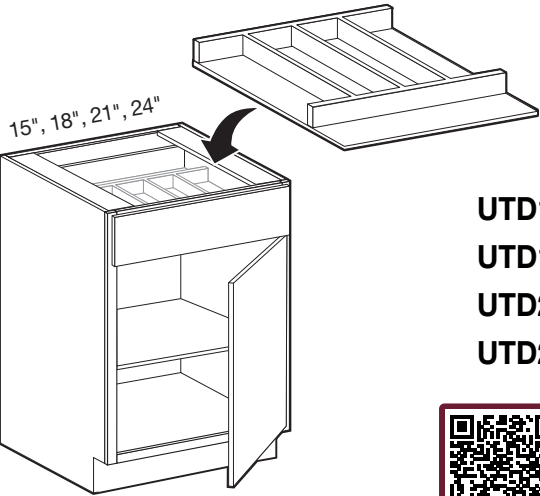


CDT15
CDT18
CDT21
CDT24

- Solid hardwood drawer insert
- One full width front utensil compartment

CDT15: 6 compartments 10"-14" deep (fits B15, BD15)
CDT18: 6 compartments 10"-14" deep (fits B18, BD18, B36, BD36)
CDT21: 8 compartments 10"-14" deep (fits B21)
CDT24: 8 compartments 10"-14" deep (fits B24, BD24)

Utensil Divider Tray



UTD15
UTD18
UTD21
UTD24

- Solid hardwood drawer insert
- One full width front utensil compartment

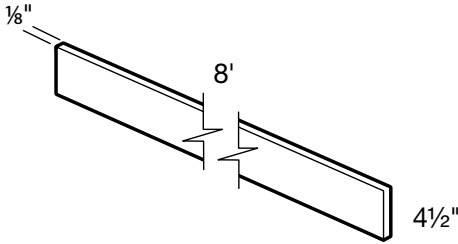
UTD15: 2 additional compartments 16" deep (fits B15, BD15)
UTD18: 4 additional compartments 16" deep (fits B18, BD18, B36, BD36)
UTD21: 5 additional compartments 16" deep (fits B21)
UTD24: 5 additional compartments 16" deep (fits B24, BD24)



DESIGN TIP

8' Finished Toe Kick – Matches Frame Color

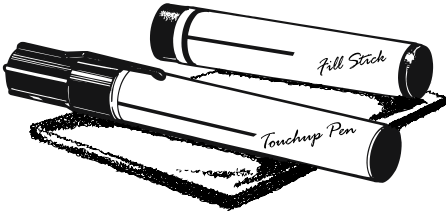
MTK8



- 1/8" thick plywood finished with laminate color matched to cabinetry face frame
- Field modified and installed

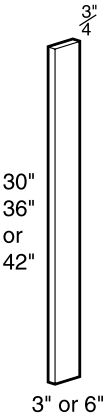
Touch-Up Kit

TUK



- Includes fill stick, touch-up pen, and 4 door bumpers

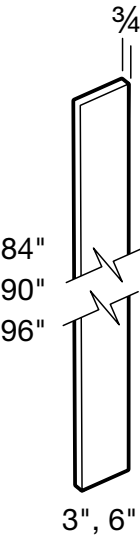
Filler Strips



FS30 FS630
FS36 FS636
FS42 FS642
FS84

- 3/4" thick MDF for Painted Finishes
- Face and sides finished

Tall Filler Strips

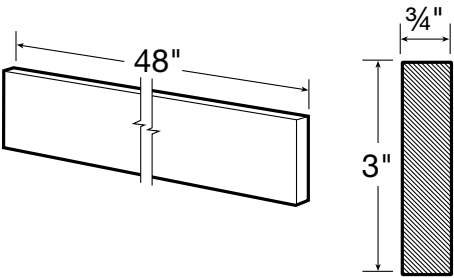


FS84
FS90
FS96
FS696

- 3/4" thick MDF for Painted Finishes
- Face and sides finished

48" Valance

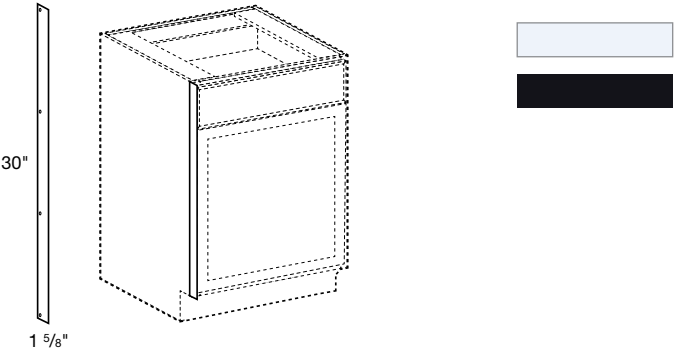
VA48



- 3/4" thick solid wood
- May be trimmed on each end

Heat Shield

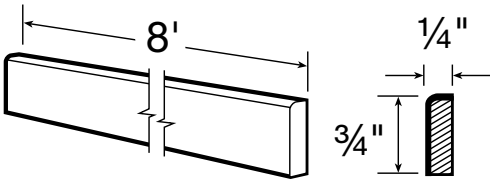
HEAT_SHIELD_WHITE
HEAT_SHIELD_BLACK



- Helps protect cabinet doors adjacent to ovens
- Attaches to the cabinet face frame
- Available in White or Black

Scribe Molding

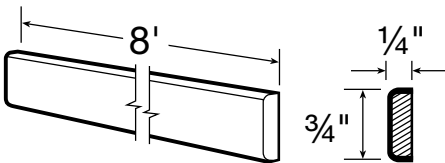
SM8



- 1/4" thick solid wood

Batten Molding

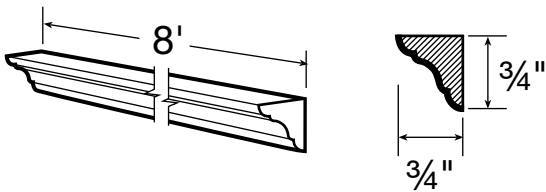
BM8



- 1/4" thick solid wood

Inside Corner Molding

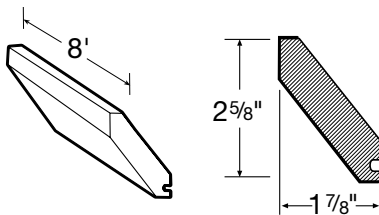
ICM8



- 3/4" thick solid wood

Angle Crown Molding

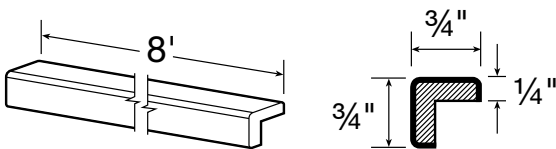
ACM8



- DESIGN TIP:** When returning crown molding to the wall at the end of a run, allow at least 3" of wall space
- 3/4" thick solid wood
 - Use with TMMS8 for top of cabinet installation

Outside Corner Molding

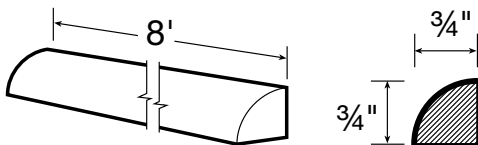
OSC8



- 3/4" thick solid wood

Quarter Round

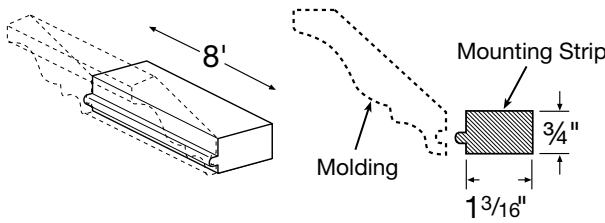
QR8



- 3/4" thick solid wood

Top Molding Mounting Strip

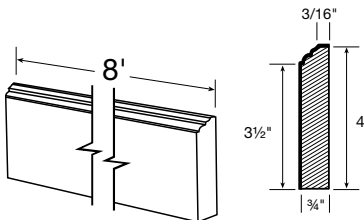
TMMS8



- 3/4" thick solid unfinished wood
- Recommended for installation of ACM8, CM8 moldings

Furniture Base Molding

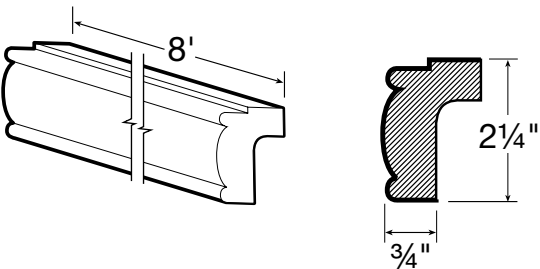
FBM8



- 3/4" thick solid wood

Classic Light Rail

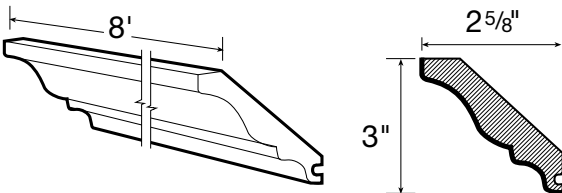
CLR8



- 3/4" thick solid wood

Crown Molding

CM8



- 3/4" thick solid wood
- Use with TMMS8 for top of cabinet installation



- Matte black

DH801-96MBL
4-1/4" Square Bar Pull
3 3/4" center (96mm)

DH801-128MBL
5-1/2" Square Bar Pull
5" center (128mm)

DH00801-17MBL
6-3/4" Square Bar Pull
6-5/16" center (160mm)



- Brushed nickel

DH5016-96BRN
5-3/8" Tubular Bar Pull
3 3/4" center (96mm)

DH5016-128BRN
6-5/8" Tubular Bar Pull
5" center (128mm)

DH5016-160BRN
7-7/8" Tubular Bar Pull
6-5/16" center (160mm)



- Brushed nickel

DH801-96BRN
4-1/4" Square Bar Pull
3 3/4" center (96mm)

DH801-128BRN
5-1/2" Square Bar Pull
5" center (128mm)

DH00801-17BRN
6-3/4" Square Bar Pull
6-5/16" center (160mm)



- Champagne Bronze

DH5016-96CHBR
5-3/8" Tubular Bar Pull
3 3/4" center (96mm)

DH5016-128CHBR
6-5/8" Tubular Bar Pull
5" center (128mm)

DH5016-160CHBR
7-7/8" Tubular Bar Pull
6-5/16" center (160mm)



- Champagne Bronze

DH873-96CHBR
4-1/4" Square Bar Pull
3 3/4" center (96mm)

DH873-128CHBR
5-3/8" Square Bar Pull
5" center (128mm)

DH873-160CHBR
6-3/4" Square Bar Pull
6-5/16" center (160mm)



DH99-188

- Round knob
- Brushed nickel
- 1-1/4" diameter



DH99-128

- Contemporary bow pull
- Brushed nickel
- 3-3/4" center (96mm)
- 5-1/4" outside length



- Euro railing pull
- Brushed nickel

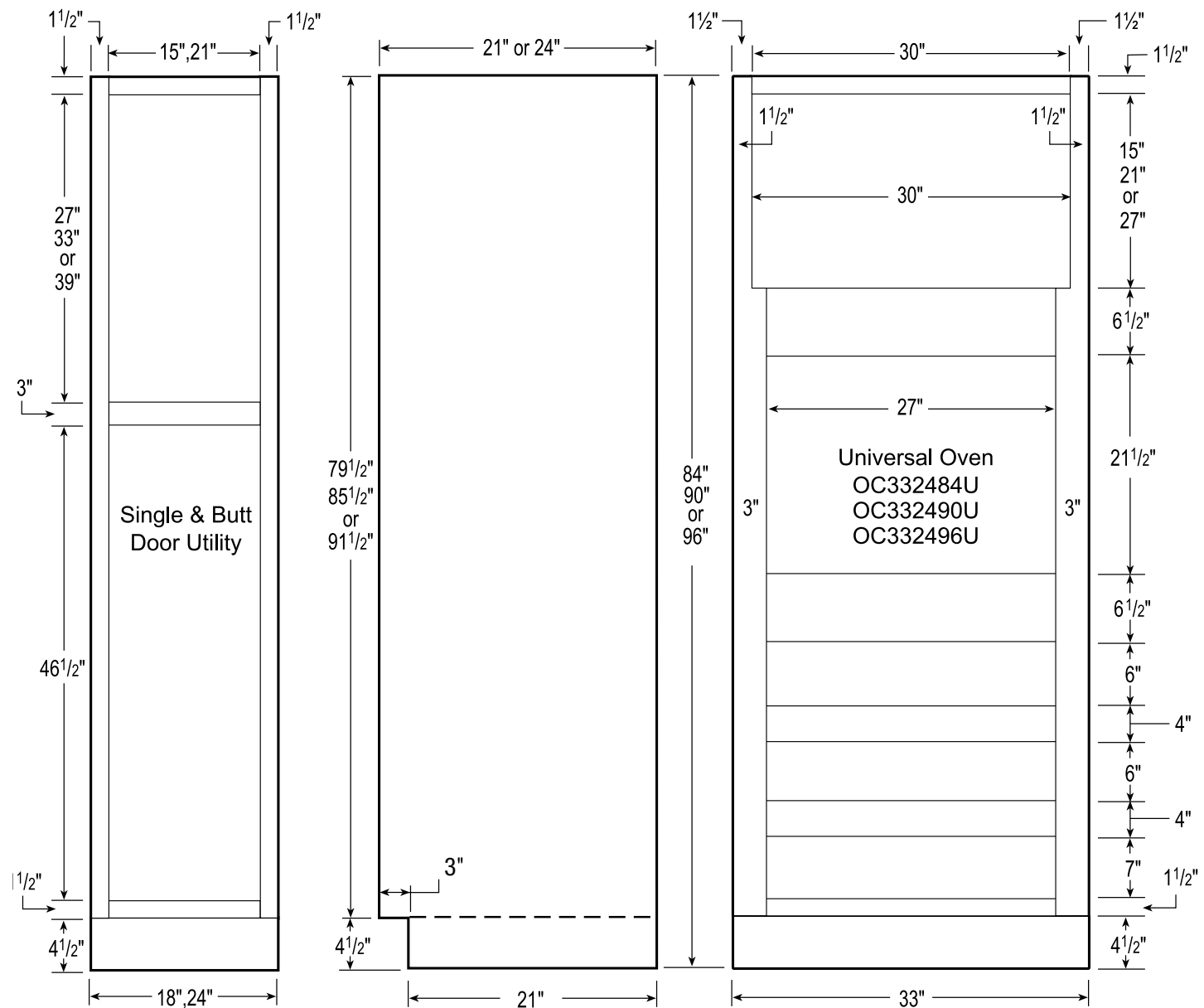
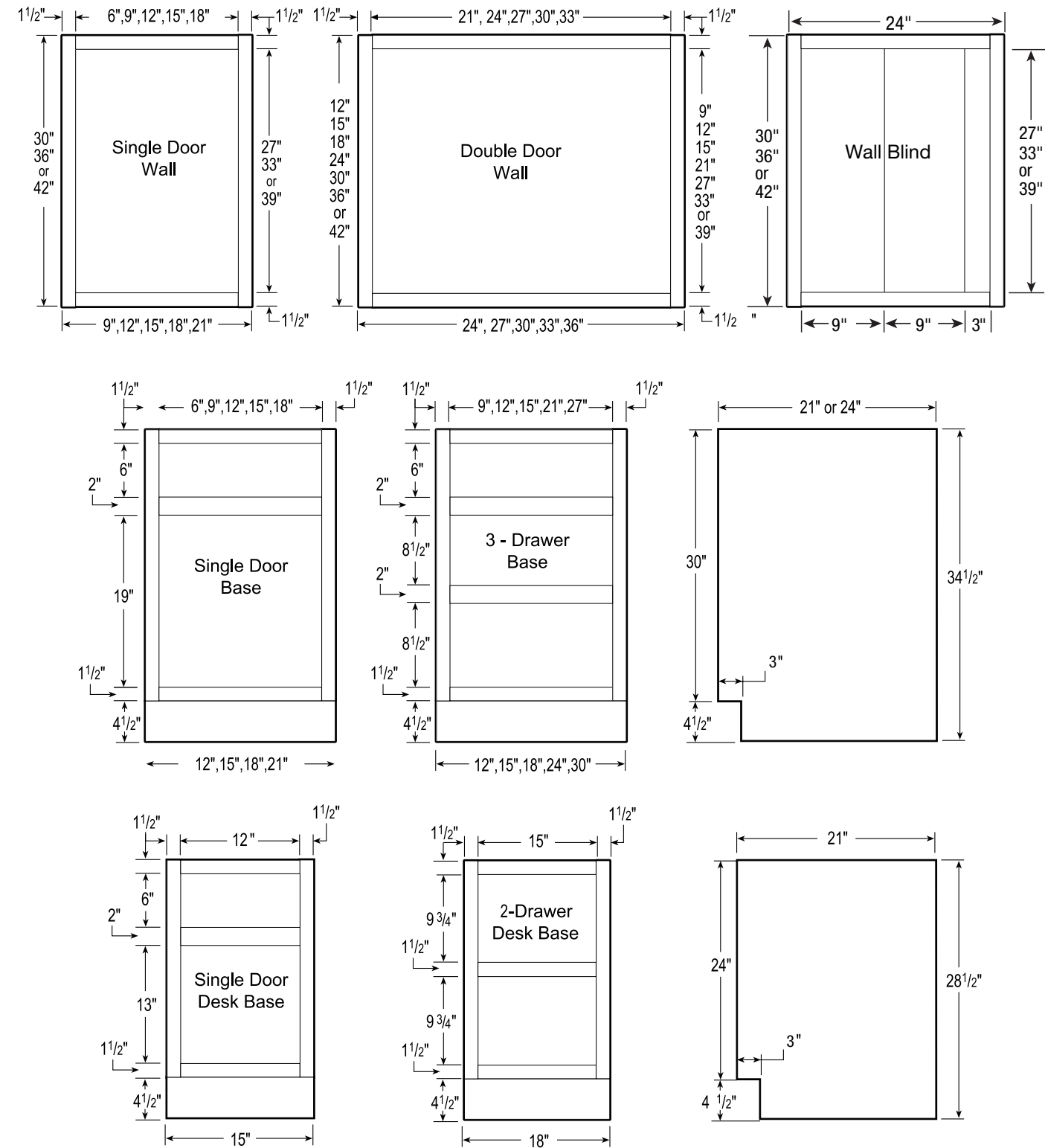
DH45-100 - 6 15/16" Euro Pull
3-13/16" center (96mm)

DH45-102 - 10 3/4" Euro Pull
7-9/16" center (192mm)

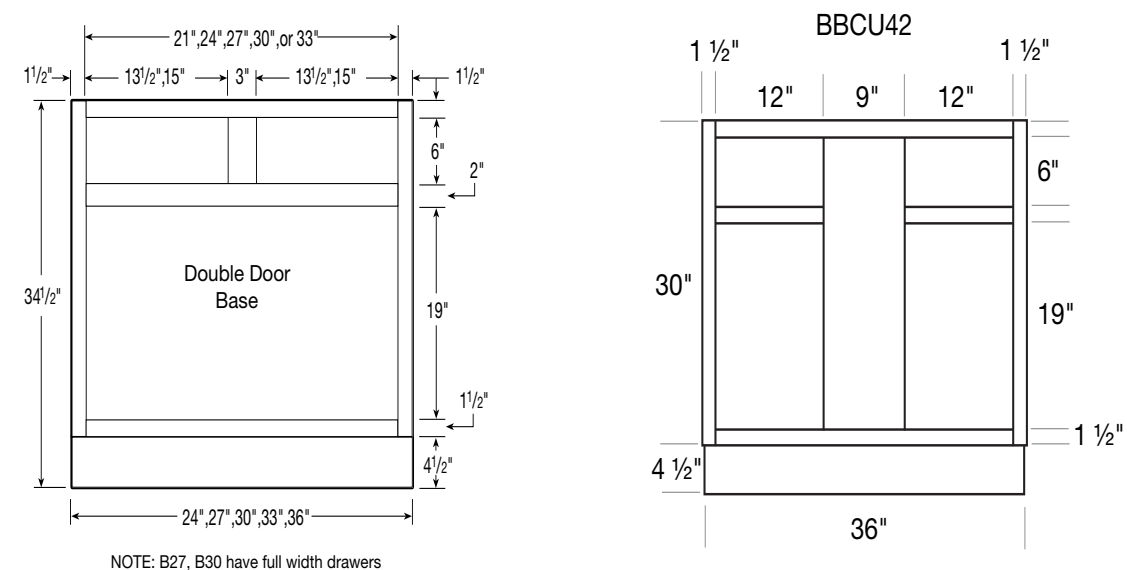
DH45-104 - 14 7/8" Euro Pull*
11-3/4" center (298mm)

DESIGN TIP: Make sure to double check the length of drawer/door to ensure pull will fit the cabinet





NOTE: 96" TALL CABINETS ARE SUPPLIED WITH LOOSE TOE KICK BOX



DRAWER BOX INSIDE DIMENSIONS						
CABINET	SHALLOW DRAWER			DEEP DRAWER		
	HEIGHT	DEPTH	WIDTH	HEIGHT	DEPTH	WIDTH
B12, BD12	4-3/8"	19-11/16"	6-7/8"	6-3/4"	19-11/16"	6-7/8"
VB1221, VBD1221	4-3/8"	16-11/16"	6-7/8"	6-3/4"	16-11/16"	6-7/8"
B15, BBCU42, BD15	4-3/8"	19-11/16"	9-7/8"	6-3/4"	19-11/16"	9-7/8"
VB1521, VBD1521	4-3/8"	16-11/16"	9-7/8"	6-3/4"	16-11/16"	9-7/8"
DDO15, DDR15	4-3/8"	19-11/16"	9-7/8"	N/A	N/A	N/A
B18, BD18	4-3/8"	19-11/16"	12-7/8"	6-3/4"	19-11/16"	12-7/8"
VB1821, VBD1821	4-3/8"	16-11/16"	12-7/8"	6-3/4"	16-11/16"	12-7/8"
B21	4-3/8"	19-11/16"	15-7/8"	N/A	N/A	N/A
B24, BD24	4-3/8"	19-11/16"	18-7/8"	6-3/4"	19-11/16"	18-7/8"
VB2421	4-3/8"	16-11/16"	18-7/8"	N/A	N/A	N/A
B27	4-3/8"	19-11/16"	21-7/8"	N/A	N/A	N/A
B30, BD30	4-3/8"	19-11/16"	24-7/8"	6-3/4"	19-11/16"	24-7/8"
VB3021	4-3/8"	16-11/16"	24-7/8"	N/A	N/A	N/A
VBD30	4-3/8"	16-11/16"	24-7/8"	6-3/4"	16-11/16"	24-7/8"
B33	4-3/8"	19-11/16"	11-1/4"	N/A	N/A	N/A
B36, BD36	4-3/8"	19-11/16"	12-7/8"	6-3/4"	19-11/16"	30-7/8"
VB3621	4-3/8"	16-11/16"	12-7/8"	N/A	N/A	N/A

HOME DECORATORS COLLECTION

Express Painted Pearl Gray

2 DAY* EXPRESS

2 DAY* EXPRESS KITCHEN AND BATH CABINETRY

Have Questions? Need Design Help?

 [HDCkitchens.com](https://www.HDCkitchens.com)  [homerdesigntools.com](https://www.homerdesigntools.com)  844-474-7843

Monday-Friday 9 A.M. to 8 P.M. EST | Saturday 9 A.M. to 6 P.M. EST

*2 Business Days

January 2023

KCMA

CARB2 compliant



HDC-EXPRESS-SPECBOOK-0123



Member
NKBA

LIFETIME
Limited
Warranty

CARB2
compliant