

FF918C-W Wireless Boat Fish Finder Manual Guide

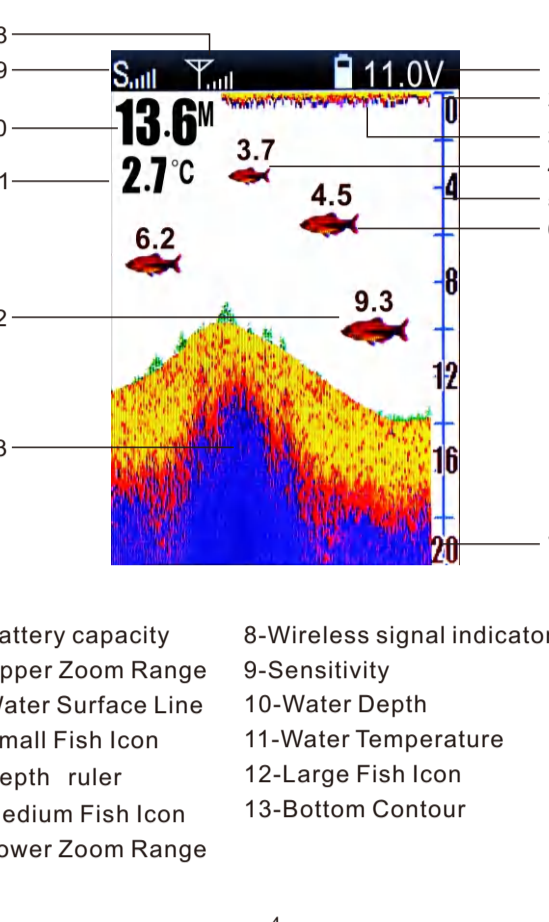


1. Thank you for choosing LUCKY FF918C-W Wireless boat fish finder.

This amazing product is especially designed for amateur and professional fishermen alike, to find out the location of fish ,depth and bottom contour of water. The unit can be used in ocean, river or lake and is fantastic for detecting schools of fish in any particular area. Using amazing and innovative technology, this fish finder is the ideal tool to bring the fish to you!

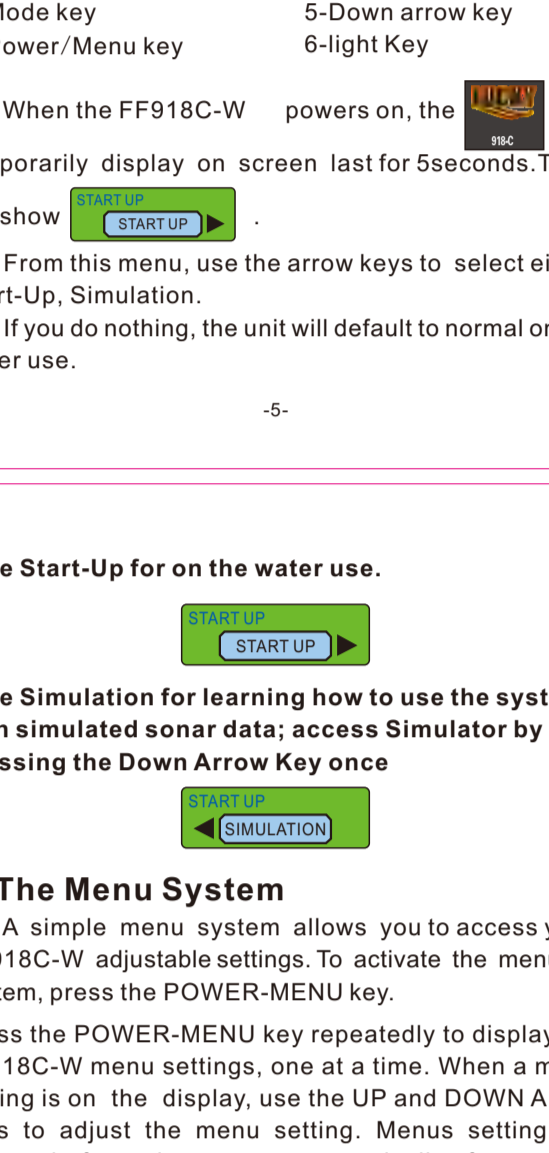
2. Installing Cell Battery of Wireless Sonar Sensor

1. Please open the wireless sonar sensor cover.



-1-

2. According to picture shows, make the battery with right direction put into the battery holder, the battery positive level upward, battery into the sheet iron below, then press down.



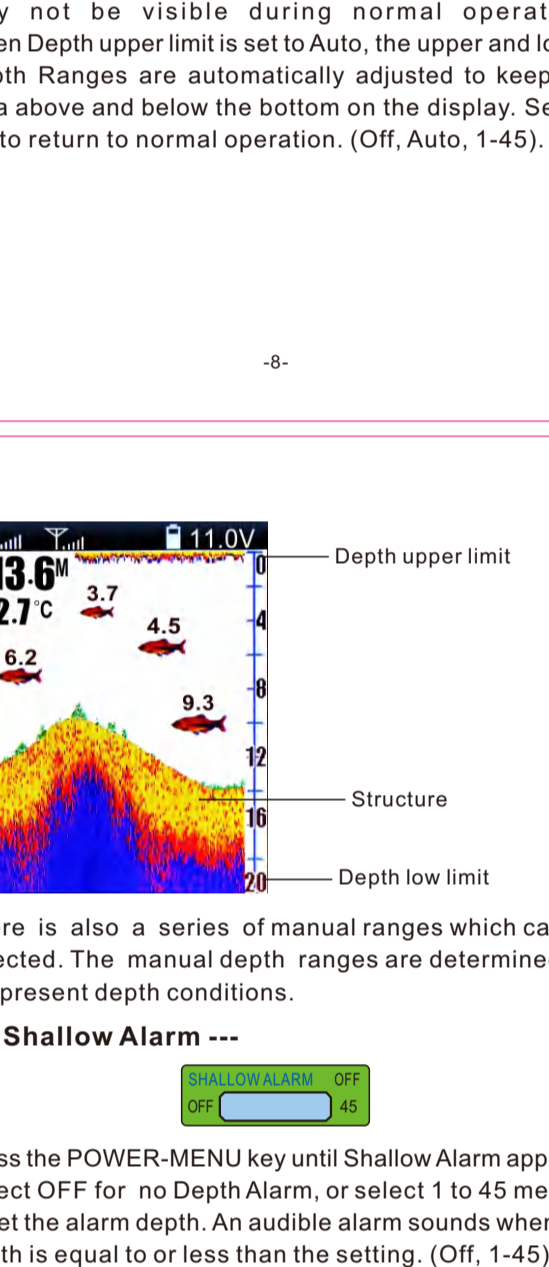
-2-

3. Display View

The FF918C-W displays underwater information in an easy-to-understand format. The top of the display corresponds to the water surface, and the bottom of the display corresponds to the Depth Range automatically selected for the current water depth. The Bottom Contour varies as the depth under the boat changes. Digital readouts provide precise information for depth, fish and water temperature.

As the boat moves, terrain and bottom composition variations are displayed. Fish, baitfish and thermoclines (underwater temperature changes) are displayed when detected. Underwater conditions vary greatly, so some experience and interpretation is needed to realize all the benefits of the FF918C-W use the picture as a guide to the most common conditions and practice using the FF918C-W over known bottom types.

-3-

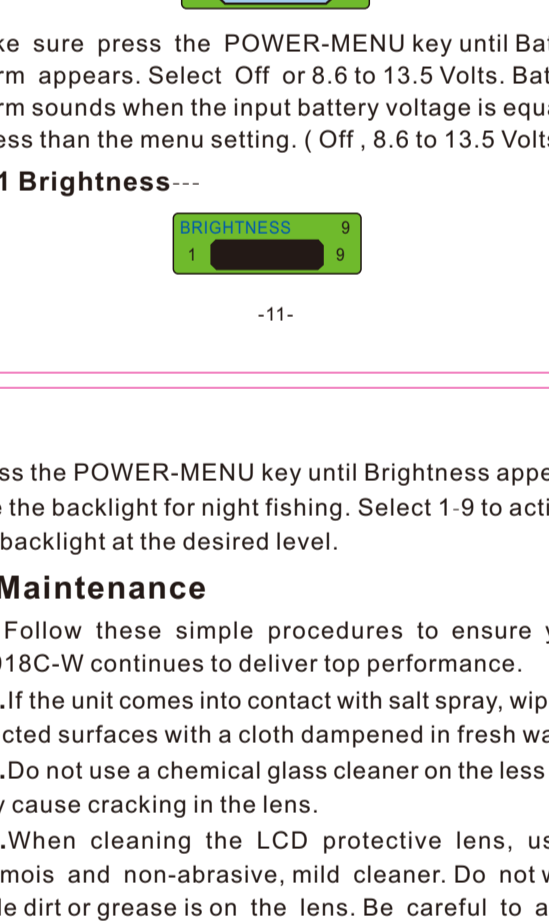


- 1-Battery capacity
- 2-Upper Zoom Range
- 3-Water Surface Line
- 4-Small Fish Icon
- 5-Depth ruler
- 6-Medium Fish Icon
- 7-Lower Zoom Range
- 8-Wireless signal indicator
- 9-Sensitivity
- 10-Water Depth
- 11-Water Temperature
- 12-Large Fish Icon
- 13-Bottom Contour

-4-

5. Powering ON and OFF

Press last 3seconds and release the POWER-MENU key to power the FF918C-W on. Press and hold the POWER-MENU key until the unit shuts down to power off.



- 1-Up arrow key
- 2-Mode key
- 3-Power/Menu key
- 4-Sensitivity key
- 5-Down arrow key
- 6-light Key

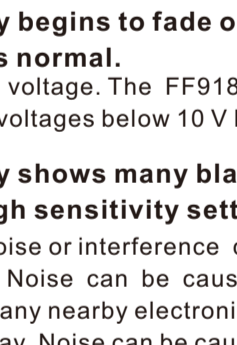
When the FF918C-W powers on, the will temporarily display on screen last for 5seconds. Then will show .

From this menu, use the arrow keys to select either Start-Up, Simulation.

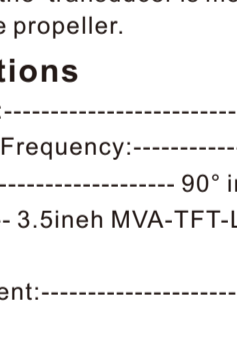
If you do nothing, the unit will default to normal on the water use.

-5-

-Use Start-Up for on the water use.



-Use Simulation for learning how to use the system with simulated sonar data; access Simulator by pressing the Down Arrow Key once



6. The Menu System

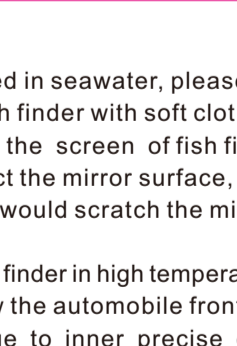
A simple menu system allows you to access your FF918C-W adjustable settings. To activate the menu system, press the POWER-MENU key.

Press the POWER-MENU key repeatedly to display the FF918C-W menu settings, one at a time. When a menu setting is on the display, use the UP and DOWN Arrow keys to adjust the menu setting. Menus setting are removed from the screen automatically after several seconds. In Normal operating mode, most menu settings saved to memory will not return to their default values when the unit is turned off. See individual menu choices for more information.

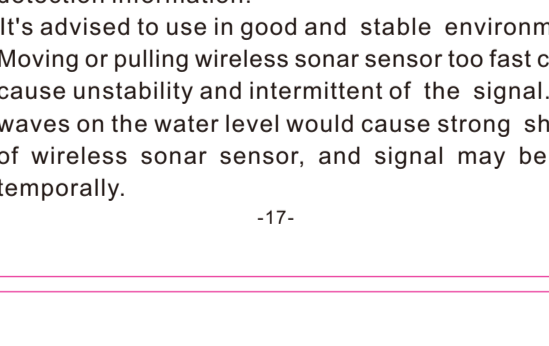
NOTE: Each time the POWER-MENU key is pressed, the backlight momentarily illuminates for easy viewing at night. Adjust the Brightness menu setting to keep the backlight on.

-6-

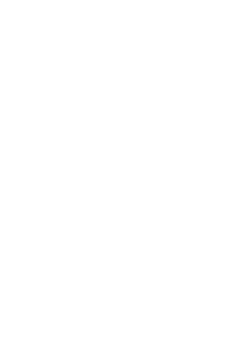
6.1 User mode---



Use the User Mode menu choice to change between these two user modes.



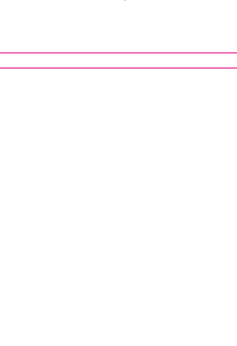
6.2 Sensitivity---



Press the POWER-MENU key until SENSITIVITY appears. Sensitivity controls how much detail is shown on the return. Increasing the sensitivity shows more sonar returns from small baitfish and suspended debris in the water; however, the display may become too cluttered. When operating in very clear water or greater depths, increased sensitivity shows weaker returns that may be of interest. Decreasing the sensitivity eliminates the clutter from the display that is sometimes present in murky or muddy water. If Sensitivity is adjusted too low, the display may not show many sonar returns that could be fish. (1 - 9).

-7-

6.3 Depth low limit



Press the POWER - MENU key until Depth low limit appears. Automatic is the default setting. When in automatic, the lower range will be adjusted by the unit to follow the bottom. (Auto, 1-45)

NOTE: In manual operation, if the depth is greater than the depth range settings, the bottom will not be visible on the display. Select AUTO to return to automatic operation.

6.4 Depth upper limit

Press the POWER-MENU key until Depth upper limit appears. Select Auto to magnify the area around the bottom in order to reveal fish and structure close to the bottom that may not be visible during normal operation. When Depth upper limit is set to Auto, the upper and lower Depth Ranges are automatically adjusted to keep the area above and below the bottom on the display. Select Off to return to normal operation. (Off, Auto, 1-45).

-8-

There is also a series of manual ranges which can be selected. The manual depth ranges are determined by the present depth conditions.

6.5 Shallow Alarm ---

Press the POWER-MENU key until Shallow Alarm appears. Select Off for no Depth Alarm, or select 1 to 45 meters to set the alarm for the alarm. An audible alarm sounds when the depth is equal to or less than the setting. (Off, 1-45)

6.6 Fish Icon ---

-9-

Make sure press the POWER-MENU key until Fish Icon appears. Select either Off to view "raw" sonar returns, or On to view Fish symbols. Fish Icon uses advanced signal processing to interpret sonar returns, and will display a Fish Symbol when very selective requirements are met. A select number of possible fish returns will be displayed with their associated depth. (On, Off).

6.7 Fish Alarm---

Press the POWER-MENU key until FISH ALARM appears. Select Off for no fish alarm, or one of the following symbols to set the alarm. An alarm will sound when the FF918C-W detects fish that correspond to the alarm setting. Fish Alarm will only sound if Fish ID+ is also set to On. (Off, Large, Large/Medium, All).

-10-

6.8 Units---

Make sure press the POWER-MENU key until UNITS appears. UNITS selects the units of measure. (Feet/F, Meters/C, Feet/C, Meet/F ,where F stands for Fahrenheit and C stands for Celsius)

6.9 Color Tone---

Make sure press the POWER-MENU key until Color Tone appears. Selects the method used to represent the bottom and structure on the display. (Red, Green, Blue, Orange, Grey)

6.10 Battery Alarm ---

Make sure press the POWER-MENU key until Battery Alarm appears. Select Off or 8.6 to 13.5 Volts. Battery Alarm sounds when the input battery voltage is equal to or less than the menu setting. (Off, 8.6 to 13.5 Volts)

6.11 Brightness---

-11-

Press the POWER-MENU key until Brightness appears. Use the backlight for night fishing. Select 1 - 9 to activate the backlight at the desired level.

7. Maintenance

Follow these simple procedures to ensure your FF918C-W continues to deliver top performance.

- 7.1. If the unit comes into contact with salt spray, wipe the affected surfaces with a cloth dampened in fresh water.
- 7.2. Do not use a chemical glass cleaner on the lens - this may cause cracking in the lens.
- 7.3. When cleaning the LCD protective lens, use a chamois and non-abrasive, mild cleaner. Do not wipe while dirt or grease is on the lens. Be careful to avoid scratching the lens.
- 7.4. If your boat remains in the water for long period of time, marine growth can reduce the effectiveness of the transducer. Periodically clean the face of the transducer with liquid detergent.

-12-

8. Trouble

Many requests for repair received by LUCKY involve units that do not actually need repair.

8.1. Nothing happens when I turn the unit on.

Check the power cable connection at both ends. Be sure the cable is connected correctly to a reliable power source - red lead to positive, black lead to negative or ground. Ensure the power available is between 11 and 13 V DC.

8.2. There is no bottom reading visible on the display.

In very deep water, it may be necessary to increase the sensitivity setting manually to maintain a graphic depiction of the bottom. Inspect the transducer cable from end to end for breaks, kinks, or cuts in the outer casing of the cable. If none of these actions identifies an obvious problem, the transducer itself may be at fault. Be sure to include the transducer if returning the unit for repair.

8.3. When in very shallow water, I get gaps in the bottom reading and inconsistent digital depth indication.

The FF918C-W will work reliably in water 3 feet (1 meters) or deeper. Remember that the depth is measured from the transducer, not from the surface of the water.

-13-

8.4. The display begins to fade out. Images are not as sharp as normal.

Check the input voltage. The FF918C-W will not operate on input voltages below 10 V DC.

8.5. The display shows many black dots at high speeds and high sensitivity settings.

You are seeing noise or interference caused by one of several sources. Noise can be caused by electronic devices. Turn off any nearby electronics and see if the problem goes away. Noise can be caused by the engine. If engine noise is causing the interference, the problem will intensify at higher RPMs. Increase the engine speed with the boat stationary to isolate this cause. Propeller cavitation can also appear as noise on the display. If the transducer is mounted too close to the propeller, the turbulence generated can interfere with the sonar signal. Make sure that the transducer is mounted at least 15" (380mm) from the propeller.

9. Specifications

- Depth Capability:-----135 feet (45m)
- Sonar Operating Frequency:-----125 KHz
- Sonar Coverage:-----90° in 125KHz;
- LCD :-----3.5inch MVA-TFT-LCD, 320V x 480H
- Power Requirement:-----11 to 13V DC

-14-

Attention Of Using Wireless Sonar:

1. Please make sure batteries are correctly installed. After batteries are wholly installed into the battery holder, they shall be locked tightly with belt. Moreover, please check if the battery cover has been screwed tightly, and if the O-shaped ring is placed at the correct position. If the seal ring breaks away from the slot, it shall be reinstalled properly, so as to avoid water leakage. If not properly sealed, or if the seal ring is not correctly installed, water may flow in, affecting the normal function of the camera.
2. Please make sure that the batteries are full. If data of the camera is found with error in reading, please change batteries. If there is electricity shortage, the data of depth may not be accurate or even changes frequently. In addition, the operating distance will also be reduced consequently.
3. Please try not to make the wireless sonar sensor fall off onto hard ground or rocks. This may cause great impact, making components in it fall off or damaging the wireless sonar sensor.
4. After being used in sea water, the surface of wireless sonar sensor and the copper columns shall be washed with fresh water, so as to avoid copper columns from being corroded by sea water, and to ensure that the camera can be operated normally.
5. If water accidentally enters into the wireless sonar sensor, the batteries shall be removed immediately,

-15-

and water in the holder shall be wiped up as well. After that, it is required to use dry cloth or paper towel to sop up water in the battery holder. The wireless sonar sensor shall not be used only after the water has been completely removed.

6. It's advised to use fish finder in water more than 1 meters. As fish finder is a high-precision electronic product to detect fish based on sonar transmission and reflection, and wavelength of the signal is 1 meters, but signal cannot be reflected in one wavelength, so it's impossible to detect fish within 1 meters. Besides the beam angle of sonar signal is 90 degrees. So the deeper of the water, the more area is detected, and the more accurate of the detection is.
7. It's not advised to use the fish finder in environment of smooth place (like water tank, swimming pool, water bucket, or fish pond) and hard ground (like ceramic tiles, cement, glasses or plastics), because the detection can be inaccurate. The bottom of these places is smooth and hard, adding to their small space, the signal sent by fish finder will be reflected strongly, which would increase signal overlapping and interfere the proper operation of fish finder. So it's better to use the fish finder in large space like outdoor natural water.
8. It's advised to avoid using fish finder in net cages or nearby. Signal of fish finder can be interfered by fishing nets and thick ropes under the water of these places, adding to high - density fish school, it would cause distortion of detecting depth and fish school.

-16-

9. After being used in seawater, please wipe the surface seawater of fish finder with soft cloth.
10. Please clean the screen of fish finder with glasses cloth to protect the mirror surface, but not with rough things, which would scratch the mirror surface of fish finder.
11. Do not put fish finder in high temperature environment such as below the automobile front windshield, it will cause damage to inner precise components, and performance of the fish finder.
12. If there is no signal reception in use, "No signal" will be displayed on the screen and fish finder will alarm until reception is regained.
13. It's advised to use fish finder in open space to achieve an ideal effect. When there are obstacles like buildings, trees between wireless sonar sensor and fish finder, signal will be interfered and becomes unstable, and reception distance is shortened. Please avoid using two fish finders within the operational distance of one wireless sonar sensor, as signal of wireless sonar sensor is strong, and can transmit far. Or else wireless signal will interfere each other, and cause inaccurate detection information.
14. It's advised to use in good and stable environment. Moving or pulling wireless sonar sensor too fast could cause instability and intermittent of use. "No signal" will be displayed on the water level would cause strong shake of wireless sonar sensor, and signal may be lost temporarily.

-17-

15. Do not hang too heavy things on the wireless sonar sensor, which will make it sink into the water, and cause signal lost.
16. Please make sure the lid of wireless sonar sensor is screwed down to prevent water in to damage the sensor. So it's advised to use the coin to screw down the lid.

-18-

Installing the Batteries

1. With a screwdriver remove both screws located on either side of the battery door.
 2. Insert the 8-AA (not included) into the battery holder as picture.
- NOTE:** It is recommended that only high quality alkaline batteries to be used.
3. Reattaching the battery door.
 4. Reattach the battery door to the case using the screwdriver. Partially insert one screw and then the other. Fully seat the screws.
 5. Plug the power cable connector into the fish finder to make it ready for use.

-19-

ZHEJIANG LUCKY MANUFACTURER CO., LTD

No. 2098, Cuntong Road, Jindong Industrial Zone
 Jinhua City, Zhejiang Province, China
 Mail: sales@goodluckycn.com
 Tel: 0086-579-82081587
 Fax: 0086-579-82081585
 http://www.goodluckycn.com
 http://www.lucky.cn.en.alibaba.com
 http://www.lucky-in-china.com/showroom/luckyproducts