

LUCKY FF718 FISH FINDER OPERATION GUIDE

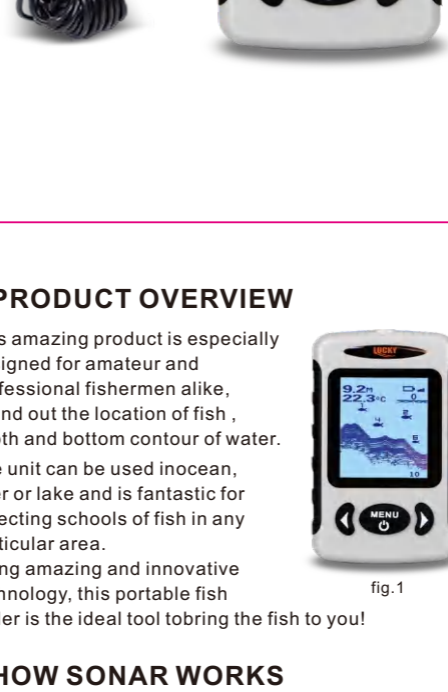


fig.1

1 PRODUCT OVERVIEW

This amazing product is especially designed for amateur and professional fishermen alike, to find out the location of fish, depth and bottom contour of water. The unit can be used in ocean, river or lake and is fantastic for detecting schools of fish in any particular area. Using amazing and innovative technology, this portable fish finder is the ideal tool to bring the fish to you!

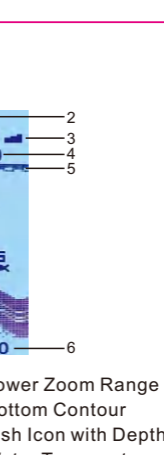


fig.1

2 HOW SONAR WORKS

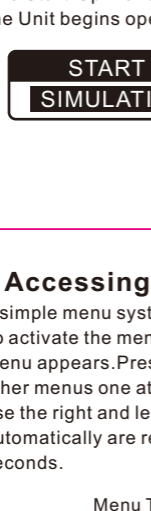
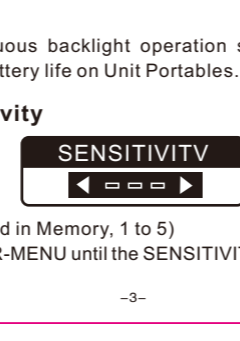


fig.2

Sonar technology is based on sound waves. The system uses sonar to locate and define structure, bottom contour and composition, as well depth directly below the transducer. The transducer sends a sound wave signal and determines distance by measuring the time between the transmission of the sound wave and when the sound wave is reflected off an object; it then uses the reflected signal to interpret location, size, and composition of an object.

-1-

3 DISPLAY VIEW



- 1 Water Depth
- 2 Battery Strength Indicator
- 3 Sensitivity Indicator
- 4 Upper Zoom Range
- 5 Water Surface Line
- 6 Lower Zoom Range
- 7 Bottom Contour
- 8 Fish Icon with Depth
- 9 Water Temperature

4 Powering ON and OFF

Press and release POWER-MENU to power the unit on. Press and hold POWER-MENU until the unit shuts down to power off.

When Unit powers on, the Start Up menu temporarily appears. From this menu, select either Start-Up for on-the-water use, or Simulation for learning to use the system with simulated sonar data.

The Start-Up menu disappears after several seconds and the Unit begins operation.

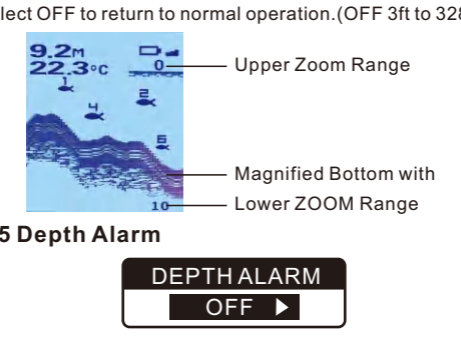
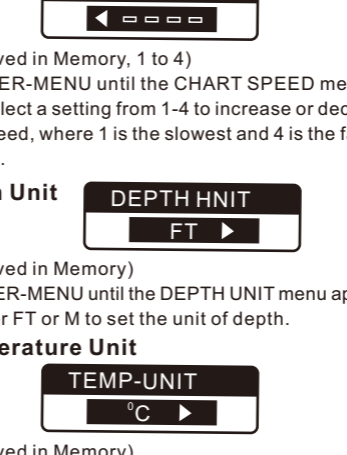


fig.2

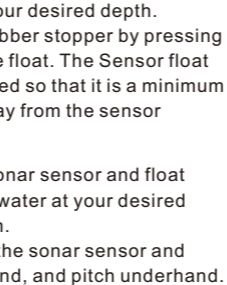
-2-

5 Accessing Menu Features

A simple menu system accesses unit's adjustable features. To activate the menu system, press POWER-MENU and a menu appears. Press POWER-MENU repeatedly to access other menus one at a time. When a menu is on the display, use the right and left arrow keys to adjust the menu. Menus automatically are removed from the screen after several seconds.



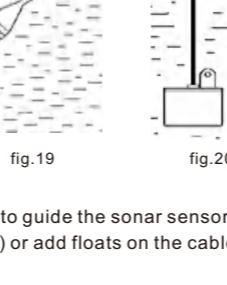
5.1 Light



(Setting Saved in Memory) Press POWER-MENU until the LIGHT menu appears. Select either OFF or ON to activate the backlight at the desired level.

Note: Continuous backlight operation significantly decreases battery life on Unit Portables.

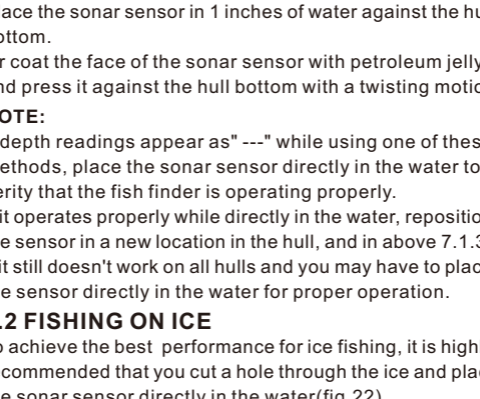
5.2 Sensitivity



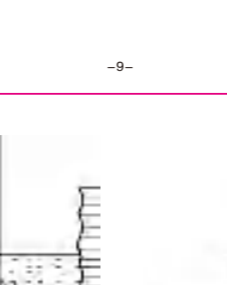
(Setting Saved in Memory, 1 to 5) Press POWER-MENU until the SENSITIVITY menu appears.

-3-

Select a higher number to show smaller sonar returns on-screen, or a lower number to remove clutter from the screen. Adjusting Sensitivity also affects how sonar returns are identified as Fish Icon Symbols - more fish will be detected at a higher setting, fewer at a lower setting. "5" is the Factory Setting.



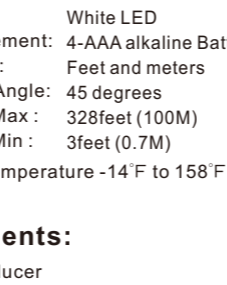
5.3 Depth Range Menu



(Setting Saved in Memory) Press POWER-MENU until the Depth Range menu appears. Select AUTO to have the Unit automatically select the Depth Range or manually select 3ft to 328 ft. This locks the depth range to a specific setting.

Note: In manual operation, if the depth is greater than the depth range setting, the bottom will not be visible on-screen. Select AUTO to return to automatic operation.

5.4 Zoom



(Setting Saved in Memory)

-4-

Press POWER-MENU until the ZOOM menu appears. Select ON to magnify the area around the bottom thus revealing fish and structure close to the bottom that may not be visible in typical operation. In Zoom, the Unit continually changes the upper and lower Depth Range to keep area just above and below the bottom on the display. Select OFF to return to normal operation. (OFF 3ft to 328ft)



5.5 Depth Alarm

(Setting Saved in Memory) Press POWER-MENU until the DEPTH ALARM menu appears. Select OFF for no Depth Alarm; select a number to set the alarm depth point and turn it on. An audible alarm sounds when the depth is equal to or less than the setting.

5.6 Fish Alarm

(Setting Saved in Memory) Press POWER-MENU until the FISH ALARM menu appears. Select OFF for no fish alarm, or select the fish icon to set the fish alarm and turn it on.

-5-

5.7 Fish Icon

(Setting Saved in Memory) Press POWER-MENU until the FISH ICON menu appears. Select either OFF to view "raw" sonar returns, or ON to take advantage of Unit's ability to identify sonar returns that are determined to be a fish. (ON, OFF)

5.8 Chart Speed

(Setting Saved in Memory, 1 to 4) Press POWER-MENU until the CHART SPEED menu appears. Select a setting from 1-4 to increase or decrease the chart speed, where 1 is the slowest and 4 is the fastest chart speed.

5.9 Depth Unit

(Setting Saved in Memory) Press POWER-MENU until the DEPTH UNIT menu appears. Select either FT or M to set the unit of depth.

5.9 Temperature Unit

(Setting Saved in Memory) Press POWER-MENU until the TEMP-UNIT menu appears. Select either °C or °F to set the unit of temperature.

-6-

6 FIXING SONAR SENSOR

6.1 Pull out the rubber stopper, adjust float so that it is 7 to 10 inches from the sensor, or at your desired depth. Replace the rubber stopper by pressing it firmly into the float. The Sensor float must be adjusted so that it is a minimum of 7 inches away from the sensor (fig.16).

6.2 Toss the sonar sensor and float assembly into water at your desired fishing location. To toss, place the sonar sensor and float in your hand, and pitch underhand. Do not throw the sensor by the cable as this will cause unreparable damage. Before tossing, be certain that the cable is free from tangles and is not wrapped around anything.

6.3 Your Fish Finder includes a combination adapter, mounting bracket for the sonar sensor (fig.17). The Adapter includes mounting tabs so that you can attach it to any flat surface or boat hull (fig.18) and appropriate rod. The Adapter is removable and adjustable up to 180 Degrees.

-7-

fig.19

fig.20

6.4 Use a pole to guide the sonar sensor to a desirable position (fig.19) or add floats on the cable to float on the water (fig.20)

NOTE: *Incorrect to use: Do not allow the cable to sink to the bottom as it may become entangled in debris (fig.21)

*The float can be removed as follows, if you do not need it, cutting off the rubber stopper from the cable and sliding the safety strap and the float towards the plug and gently take it out from the plug.

CORRECT

fig.21

INCORRECT

-8-

7 FISHING AT THE BOAT OR ICE

7.1 FISHING AT THE BOAT

7.1.1 Toss the sensor and float into the water as per the previous instructions.

7.1.2 Attach the adapter to the boat hull using the mounting tabs.

7.1.3 "shoot-Thru" the hull of a boat. Place the sonar sensor in 1 inches of water against the hull bottom.

Or coat the face of the sonar sensor with petroleum jelly and press it against the hull bottom with a twisting motion.

NOTE: If depth readings appear as "---" while using one of these methods, place the sonar sensor directly in the water to verify that the fish finder is operating properly.

If it operates properly while directly in the water, reposition the sensor in a new location in the hull, and in above 7.1.3, if it still doesn't work on all hulls and you may have to place the sensor directly in the water for proper operation.

7.2 FISHING ON ICE

To achieve the best performance for ice fishing, it is highly recommended that you cut a hole through the ice and place the sonar sensor directly in the water (fig.22).

If you would like to check the area for depth or fish before cutting the hole.

Clear away snow to expose the ice surface, making sure the surface is smooth.

Place a small amount of liquid water on the ice and set the sonar sensor on the water allowing the unit to freeze to the ice (fig.23).

fig.22

fig.23

If there are any air pockets between the sonar sensor and ice, or air on the water below the ice, the unit will not work properly and will require you to try another spot, or cut a hole in the ice to use.

NOTE: * To remove the sonar sensor from the frozen ice, gently tap sonar sensor at the base with your hand. If it will not come loose, spray a small amount of water on the ice surface around the base and repeat above step until the sonar sensor is easily removed.

Never use a blunt to strike the sonar sensor as this may cause damage to the sensitive internal electronics.

* Cold weather is extremely hard on the electrical components within the display housing. It is suggested that you keep the unit in temperatures above 0 degrees Fahrenheit (-17 degrees Celsius) during operation.

* Remove the batteries from the fish finder to prevent battery leakage and corrosion.

Clean the sonar sensor and cable with fresh water and dry-off before storing. Do not submerge and/or spray the fish finder screen/housing with water or use chemicals to clean.

-10-

8 Product specification:

- Display : 2.2 inch LCD
- Backlighting : White LED
- Power Requirement: 4-AAA alkaline Batteries(not include)
- Measure Units: Feet and meters
- Sensor Beam Angle: 45 degrees
- Depth Range Max : 328feet (100M)
- Depth Range Min : 3feet (0.7M)
- Operational Temperature -14°F to 158°F (-10°C to 50°C)

9 Attachments:

- 1)Cable transducer
- 2)Transducer Adapter
- 3)Stainless Bolt
- 4)Stainless Wing Nut
- 5)Neck Strap

MANUFACTURER: JINHUA LUCKY ET MANUFACTURER CO.,LTD.

-11-