

用户使用手册

User Manual



(冷火花机) 精品新款
(Cold spark machine) Boutique new style

欢迎使用本公司电子烟花机。本公司郑重声明，本产品配合我司专用耗材，效果更佳，且对烟花机不存在损伤。如果使用非我司专用烟花机耗材，对烟花机造成的损伤，如：卡机或者配件损伤等问题。本公司概不负责。

请用户熟知！

尊敬的客户：

感谢您选择本公司产品-电子烟花机，为了您能方便了解本公司产品的正确使用和更好的维护本机，请在使用前仔细阅读说明书，并且妥善保存，以便日后查阅。

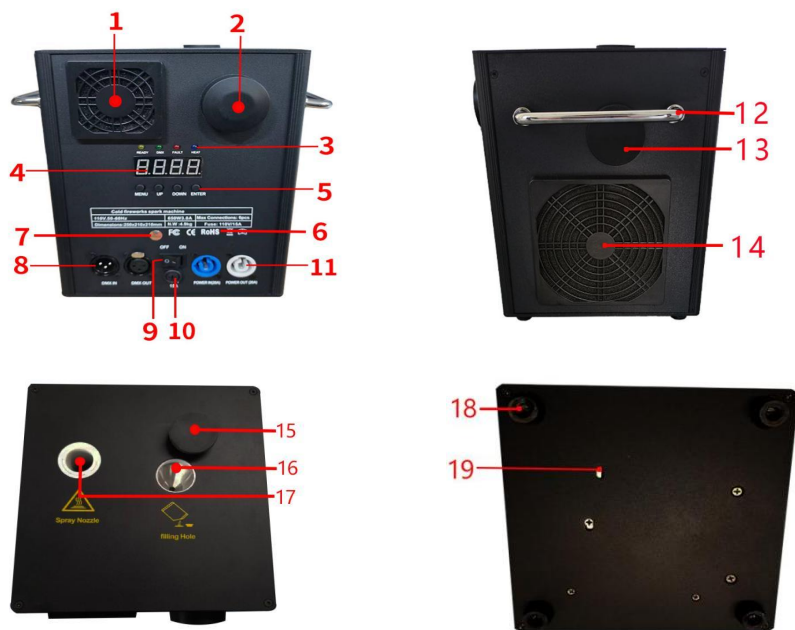
一、安全使用注意事项

警告:当通电时，本机存在危险电压。有触电受伤的危险。在任何情况下，您都不能试图打开机器或试图拆卸或调整安装在机器内的任何组件。只有经过充分训练的工程师才能打开设备。

- 1) 请把机子放置空旷的地方。
- 2) 请不要在手湿的情况下触摸或操作机器，以防触电受伤。
- 3) 机器操作运行过程中请大人小孩保持 5 米一以安全距离。
- 4) 注意保护眼睛。
- 5) 机器在使用过程中禁止移动搬运。
- 6) 本机器在通电过程中，为保安全第一，请不要试图打开机器或者拆卸和调试机器内安装的任何部件，以防触电高温受伤。只能在关机状态下由专业维修人员检查设备。
- 7) 使用前请检查加料池和喷花口内是否有杂物，如果有请通过倒机清理干净。
- 8) 并不意味着是一个连续的持续时间效果。最大运行时间是 30 分钟，可以重复使用，机器不要过热使用。
- 9) *注意加粉末时，请不要加错到喷花口，（如果加错请及时倒出，不然在机子运行中加热好的粉末喷出时和加错口的粉末混一起，就会导致鼓风机被烧坏。）
- 10) *加粉末时请确保机子停止喷花状态，加好后请盖上胶盖，防止火花掉入口里【（17）喷花口、（16）加料口】；
- 11) 小心使用，避免任何液体弄湿机器，雨天或雪天请不要使用，除非覆盖好。要保持机器和控制器的干燥。
- 12) 如消耗品不慎点燃，可用沙土扑灭，切勿用水。

二、产品简介

型 号: A001 上喷



外观功能说明

1	散热风扇	6	参数表	11	电源接头	16	加料口
2	遥控接收器	7	检验标志	12	可折叠提手	17	喷花口
3	指示灯	8	DMX 接口	13	观察检修孔	18	脚垫
4	显示屏	9	电源开关	14	可拆卸防尘网	19	清理孔
5	调节按钮	10	保险丝	15	胶盖		

三、使用参数:

喷花方向	上喷
工作温度	-10°C-50°C
加热温度	500- 
喷花高度	1.5-5M
电源	110V/6A,220V/15A
功率	600W~650W
控制	遥控/DMX512
DMX512 通道	2 个 (1) 预热 (2) 喷花
外壳材质	铝
尺寸	210 *210* 250MM
净重	4.9KG
毛重	6KG
保修	一年

四、显示屏解说：



1、按键说明

按键由左到右顺序：**菜单 (MENU)** -> **上 (UP)** -> **下 (DOWN)** -> **确认 (ENTER)**

- (1) **菜单 (MENU)**：切换菜单界面，下一个菜单。
- (2) **上 (UP)**：可作菜单切换，上一个菜单；当确认键按下之后进向上加，在 DMX 地址码界面下，进行地址码向上加；在工作温度设置界面下，工作温度向上加。
- (3) **下 (DOWN)**：当确认键按下之后向下减，在 DMX 地址码界面下，进行地址码向下减；在工作温度设置界面下，工作温度向下减。
- (4) **确认 (ENTER)**：界面进入设置状态，当前界面可进行加减数值。（只在地址码、工作温度下有效）

2、指示灯说明：

- (5) **黄灯 (READY)**：加热时闪烁，加热完成常亮。
- (6) **绿灯 (DMX)**：亮了表示有 DMX 信号，灭了为信号断开。
- (7) **红灯 (DOWN)**：有错误时亮灯，如温控检测有问题，或者加热有问题。
- (8) **蓝灯 (ENTER)**：加热过程中常亮。

3、界面说明：（按菜单键或上键切换界面）

(1) 地址码界面：



操作说明：按一下确认键④进入编辑，可按②上③下编辑地址码 A001-512，再按一下确认键退出地址码编辑。

注：使用 DMX512 信号控制模式时，每个设备间是通过设备上 DMX 信号插座（卡侬座）IN 和 OUT 进行连接，连接设备的 3 芯 XLRXL 插头端子一定要相互对应。在连接设备信号时，建议使用 DMX 信号终端器，双绞屏蔽电缆，可以避免信号干扰。

(2) 温度界面:



操作说明：当前界面不可进行操作，只做实时显示当前温度状态。

五、操作指导使用说明:

本产品具有两种操作模式：遥控、控台 DMX512

1)、遥控常规喷花操作流程：


- ①出厂默认喷花时间为 30 秒停止。
- ②插上电源线，按红色开关 ON 开、OFF 关闭。
- ③预热温度达到 500°C~550°C，就可以开始喷花，温度低于 500°C 一下会停止喷花工作。
- ④按 (1/2/3) 开始喷花；

2) 控台操作流程：

- ①控台 DMX 喷花时间为 60 秒停止。
- ②链接机器电源线，链接 DMX 信号线，打开电源开关，DMX 蓝色指示灯亮即为 DMX 信号链接成功
- ③一通道推到顶机器开始加热，（显示屏会实时显示动态温度数字）；
- ④推动二通道开始喷花。

六、遥控说明：

ON/OFF：开起加热/停止加热。

：喷花停止键。

- 1: 喷花 1 档：1.5M 到 2M 高。
 - 2: 喷花 2 档：2.M 到 3.5M 高。
 - 3: 喷花 3 档：3.5M 到 5M 高。
- C :清料键。



七、DMX 说明：

- 1) 机器采用 3 芯信号线链接，有 DMX IN 和 DMX OUT 双接口，可以多台连接使用，适用标准 512 信号控制。

2) DMX 占用通道及说明：占用 2 通道。

通道	控制功能	数值	数码管显示
1CH.加热	预热关闭	000~010	A001 DMX 地址码
	预热打开	210~239	显示当前温度值
	清理耗材	240~245	CLE
2CH.喷花	关	000~014	OFF
	喷花高度低	015~068	F1(需到达工作温度才有效)
	喷花高度中	079~130	F2(需到达工作温度才有效)
	喷花高度高	132~255	F3(需到达工作温度才有效)

八、机子串线图：



九、包装清单

- | | |
|--------|--------|
| 1 台机器 | 1 根电源线 |
| 1 个遥控 | 1 根信号 |
| 1 本说明书 | 1 根串线 |

十、耗材说明：

1) 耗材分类：

室内耗材、室外耗材

2) **耗材选择：**请选择本厂对应耗材，以免影响机器使用效果；（因为选择其他不合格耗材造成机器卡机损坏不享受保修服务）请根据使用场所选择不同种类对应耗材。

3) **耗材保存：**耗材应保存在干燥密封环境，防止受潮。（受潮耗材及有杂物耗材切不可加入）

4) **耗材添加：**如果发现喷花变少，请关闭机器观察料筒内是否还有耗材，给予添加

十一、日常维护说明:

灰尘清洁 (重要提示)

- 1、外部清洁: 请用软布轻轻擦拭机器, 避免划伤机器外壳。
- 2、每次使用完请把填充池内的粉末喷完直到没有星火出来。如果粉末太多请以倒机的方式清理干净机器中遗留的料, 便于下次使用。(注意: 遗留的料一定不能留在机内, 不然下次使用可能会造成卡机。)



- 3、请定期清洗防尘网, 以免堵塞防尘网影响机器散热, 两侧防尘网可以直接从外面拆下来, 泡棉可用清洁液清洗, 清洗晾干即可安装上去。(注: 清洗时不要搓揉, 只需要轻轻抓洗就行。)



十二、售后服务

- 1、产品保修期 1 年。
- 2、发现机器异常情况, 请联系售后服务人员, 可能需要提供一些视频和图片来确认问题。
- 3、消费者因在搬运、使用、过程中人为操作不当或自行拆卸, 安装修理不当造成的损坏, 且不在本公司保修服务范围内。

十三、故障排除

- ① 开机时显示屏不亮: 1. 首先检查保险丝有没松动或保险丝有没烧坏, 如有请扭紧或更换保险丝, 2. 检查电源是否正常, 更换电源。
- ② 卡粉故障: 在喷花过程中遇到有风出来, 但没有火花喷出。首先检查漏斗下料口是否堵住, 在检查下料电机是否有坏。如果是齿轮卡住不动, 请用尖嘴钳子夹住齿轮左右转动就可以排除卡粉故障。
- ③ EO4 E03: 是探热器不良, 需更换探热器。
- ④ 加热时数据没变: 表示不升温需更换加热板。
- ⑤ 不喷火花: 停机检查鼓风机有无异物落入喷嘴内或线端口有无脱落, 如一切正常, 那就是鼓风机不良需更换鼓风机。
- ⑥ 机器内部温度过高: 1. 检查排热风扇是否坏, 2. 关机休息 10 分钟后重新启动。

Welcome to use our electronic fireworks machine. Our company solemnly declares that this product works better with our special consumables and does not damage the fireworks machine. If we use non dedicated fireworks machine consumables, the fireworks machine will be damaged, such as jamming or parts damage. The Company is not responsible.

Please be familiar with!

Dear customers

Thank you for choosing our product - electronic fireworks machine. In order to facilitate your understanding of the correct use of our products and better maintenance of this machine, please read the instructions carefully before use and keep it properly for future reference.

I、 Precautions for safe use

Warning: When powered on, there is a hazardous voltage present on this unit. Risk of electric shock injury. Under no circumstances should you attempt to open the machine or attempt to disassemble or adjust any components installed in the machine.

Only fully trained engineers can turn on the equipment


- 1) Please place the machine in an open area.
- 2) Please do not touch or operate the machine with wet hands to prevent electric shock injury.
- 3) Please keep a safe distance of 5 meters between adults and children during the operation of the machine.
- 4) Take care to protect your eyes.
- 5) It is prohibited to move and transport the machine during use.
- 6) During the power on of this machine, in order to ensure safety first, please do not try to open the machine or disassemble and debug any components installed in the machine, to prevent electric shock and high temperature injury. The equipment can only be checked by professional maintenance personnel in the shutdown state.
- 7) Before use, please check whether there are sundries in the feeding pool and spray nozzle. If there are sundries, please clean them by reversing the machine.
- 8) It does not mean a continuous duration effect. The maximum running time is 30 minutes, which can be reused. The machine should not be overheated.
- 9) When adding powder, please do not add it to the spray nozzle wrongly. (If it is added wrongly, please pour it out in time, otherwise the heated powder will be mixed with the powder added wrongly during the operation of the machine, which will cause the black bean fan to be burned.)
- 10) When adding powder, please ensure that the machine stops spraying. After adding, please cover the rubber cover to prevent sparks from falling into the inlet ((17) spray nozzle, (16) feed inlet);
- 11) Use carefully to avoid any liquid wetting the machine. Do not use it in rainy or snowy days unless it is covered. Keep the machine and controller dry.
- 12) If consumables are accidentally ignited, they can be put out with sand instead of water.

II、Display board:



Appearance Function Description					
1	Cooling fan	8	DMX ports	15	Rubber cover
2	Remote signal receiver	9	power switch	16	Depletion hole
3	indicator light	10	Fuse	17	Spray hole
4	display	11	Power port	18	door mat
5	Adjustment button	12	Folding handle	19	Clean the hole
6	Parameter table	13	Manhole		
7	Inspection mark	14	Dustproof net		

III、Parameters:

Spray Direction	Top spray
Operating temperature	-10°C-50°C
Heating temperature	
Working Height	500 to 550 degrees
Power supply	110v/6a, 220v/10a
power	600W~650W
DMX512 channel	2(1) preheat (2) spray
Housing material	aluminum
Dimensions	210*210*250mm
Net weight	4.9 kg
Gross weight	6kg
Warranty	A year

IV、 Explanation of display screen:



1. Key description

The sequence of pressing keys from left to right: menu (MENU) ->UP ->DOWN ->ENTER

- (1) Menu: switch the menu interface to the next menu.
- (2) Up (UP): menu switching, previous menu; When the confirmation key is pressed, the address code will be added upward. Under the DMX address code interface, the address code will be added upward; In the operating temperature setting interface, the operating temperature is increased upward.
- (3) DOWN: When the confirmation key is pressed, the value decreases downward. Under the DMX address code interface, the value decreases downward; In the operating temperature setting interface, the operating temperature decreases downward.
- (4) Enter: the interface enters the setting state, and the current interface can add or subtract values. (Only valid under address code and operating temperature)

2. Indicator description:

- (5) Yellow light (READY): flashes when heating, and is always on after heating.
- (6) Green light (DMX): when it is on, it means there is a DMX signal; when it is off, it means the signal is disconnected.
- (7) Red light (DOWN): the light will turn on when there is an error, such as a problem with temperature control detection or heating.
- (8) Blue light (ENTER): it is always on during heating.

3. Interface description: (press menu key or up key to switch the interface)

(1) Address code interface:



Operating instructions: Press the OK key once to enter editing, and then press the UP key to edit the address code A001-512, and press the OK key again to exit editing the address code.

Note: When DMX512 signal control mode is used, each equipment room is connected through the DMX signal socket (XLR seat) IN and OUT on the equipment, and the three core XLRXL plug terminals connecting the equipment must correspond to each other. When connecting equipment signals, it is recommended to use DMX signal terminators and twisted pair shielded cables to avoid signal interference.

(2) Temperature interface:



Operating instructions: the current interface is not available for operation, but only for real-time display of the current temperature status.

(3) Horse racing interface:

V、 Operating instructions:

This product has two operation modes: remote control and console DMX512

1) Operation process of remote control conventional spraying:

- ① The factory default spraying time is 30 seconds.
- ② Plug in the power cord and press the red switch ON and OFF.
- ③ When the preheating temperature reaches 500 °C~550 °C, spray can be started. When the temperature is lower than 500 °C, spray will be stopped.
- ④ Press (1/2/3) to start spraying;

2) Operation process of console:

- ① Console DMX stops for 60 seconds.
- ② Connect the power cord of the machine, connect the DMX signal cable, turn on the power switch, and the DMX blue indicator light is on, which means that the DMX signal connection is successful
- ③ One channel is pushed to the top and the machine starts to heat up (the display screen will display the dynamic temperature number in real time);
- ④ Push the second channel to start spraying.

VI、 Remote control description:

ON/OFF: start heating/stop heating

 : Spraying stop key

1: general spray gear 1.1.5M To 2M.

2: General spray 2.2M TO 3M.

3: general spray 3.3M TO 5M.

C: Clear key.



VII、 DMX Description:

1) The machine is connected by 3-core signal line, and has DMX IN and DMX OUT dual interfaces. It can be connected to multiple machines and is applicable to standard 512 signal control.

2)

2) DMX occupies two channels.


Channel description:

passageway	control function	numerical value	Nixie tube display
1CH. Heating	Warm up OFF	000~010	A001 DMX address code
	Warm up on	210~239	Display the current temperature value
	Clearing	240~245	CLE
2CH. Spray	shut	000~014	OFF
	Low spray height	015~068	F1 (valid only when the operating temperature is reached)
	Medium spray height	079~130	F2 (valid only when the operating temperature is reached)
	High spray height	132~255	F3(valid only when the operating temperature is reached)

VIII、 Wiring diagram of the machine:

DMX IN reception 

DMX OUT output 

POWER IN(20A) 

POWER OUT(20A) 



IX、 Packing list

1 machine	1 This instruction says
1 remote control	1 signal
1 power cord	1 string connection

X、 Description of consumables:

1) Consumables classification:

Indoor and outdoor consumables

2) Consumables selection: Please select the corresponding consumables of our factory to avoid affecting the use effect of the machine; (If the machine is jammed due to the selection of other unqualified consumables, you will not enjoy the warranty service.) Please select different types of consumables according to the place of use.

3) Consumables storage: Consumables should be stored in a dry and sealed environment to prevent moisture. (Damp and sundry consumables must not be added)

4) Consumables adding: if there is less spray, please shut down the machine and observe whether there are still consumables in the material cylinder, and add them

XI、 Daily maintenance instructions:

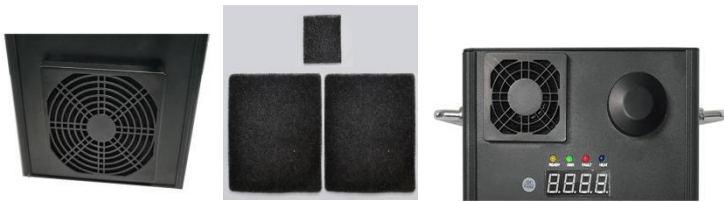
Dust cleaning (important note)

1. External cleaning: please wipe the machine gently with a soft cloth to avoid scratching the machine shell.

2. After each use, please spray the powder in the feed tank until no sparks come out. If there is too much powder, please clean up the remaining material in the machine by reversing the machine to facilitate the next use. (Note: The leftover materials must not be left inside the machine, otherwise the next use may cause the machine to jam.)



3. Please clean the dust screen regularly to avoid blocking the dust screen and affecting the heat dissipation of the machine. The dust screens on both sides can be directly removed from the outside. The foam can be cleaned with cleaning solution. After cleaning and drying, it can be installed. (Note: Do not rub when cleaning, just gently grasp and wash.)



XII、 After sales service:

1. The product warranty period is 1 year.
2. Please contact the after-sales service personnel in case of any abnormal condition of the machine. It may be necessary to provide some videos and pictures to confirm the problem.
3. The damage caused by improper handling, use and self disassembly, improper installation and repair by consumers is not within the scope of our warranty service.

XIII、 Troubleshooting:

- ❶ The display screen does not light up when starting up: 1. First, check whether the fuse is loose or burnt out. If so, tighten or replace the fuse. 2. Check whether the power supply is normal and replace the power supply.
- ❷ Powder sticking fault: During the spraying process, there is wind coming out, but no sparks are emitted. First, check whether the lower consumption port of the funnel is blocked, and then check whether the lower consumption motor is damaged. If the gear is stuck, please use pointed-nose pliers to clamp the gear and rotate it left and right to eliminate the problem.
- ❸ EO4 E03:1. The heat detector is defective and needs to be replaced.
- ❹ The data remains unchanged during heating: 1. The table shows that the heating plate needs to be replaced if the temperature does not rise.
- ❺ No sparking: 1. Stop the machine and check whether there is any foreign matter falling into the nozzle or whether the wire port falls off. If everything is normal, the blower needs to be replaced if it is defective.
- ❻ The internal temperature of the machine is too high: 1. Check whether the heat exhaust fan is broken, 2. Shut down and rest for 10 minutes before restarting.