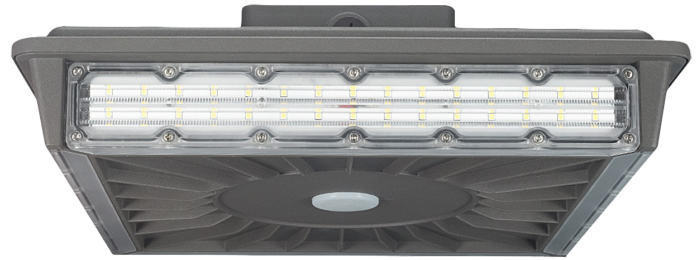


# LED Parking Garage Canopy Series

**Wattages: 45W, 70W**

LED Parking Garage Canopy Series can be widely used in indoor or outdoor lighting (wet location). Ideal for museums, art galleries, parking garage, buildings, the lawn, industrial areas, residential areas, sidewalks, schools, and many more applications.

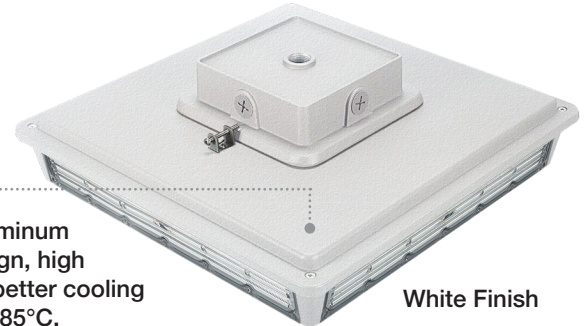


Side View



## FEATURES

- Lumileds LED, high luminous efficiency and long working life.
- High efficiency LED Driver, the wide range input voltage AC120-277V.
- Excellent optics design, greatly improve the light utilization and evenness.
- Motion sensor control available (Optional) .
- 1-10V Dimming.



Die-cast aluminum cooling design, high quality and better cooling for LED Tj < 85°C.

White Finish

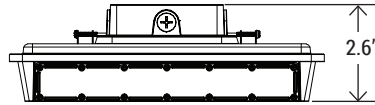
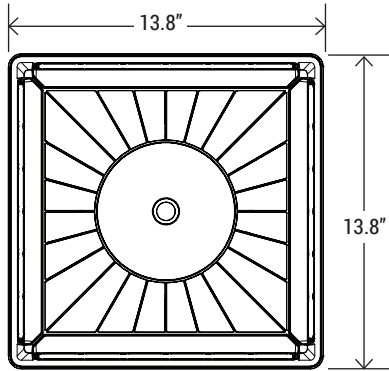
## SPECIFICATION

	45W	70W
WATTAGE	45W	70W
LUMEN	5625 lm	8750 lm
EFFICACY	125 lm/W	125 lm/W
CCT	4000K, 5000K	
CRI	70	
UPLIGHT	15%	
INPUT VOLTAGE	120-277V	
POWER FACTOR	0.95	
DRIVER EFFICACY	90%	
DIMMING	1-10V Dimming	
LIGHT ANGLE	270°	
LIFE SPAN	75,000 hrs	
WORKING TEMPERATURE	-22°F ~ 113°F	
STORAGE TEMPERATURE	-40°F ~ 176°F	
OUTDOOR RATING	Wet location/IP66	
CABLE	Input Connect, (11.8 inch)	
WARRANTY	5 year limited	

# LED Parking Garage Canopy Series

**Wattages: 45W, 70W**

## DIMENSION



<b>WATTAGE</b>	45W / 70W
<b>NT. WEIGHT</b>	10.56 lbs
<b>BOX DIM.</b>	14.76" x 14.76" x 5.31"

## PHOTOCELL (SOLD SEPARATELY)



**BRI823-B-D AC120-277V**  
Motion sensor BRI823 for PGC



**BRI810 AC120-277V // BRI810-C-F**  
LED Area Light Motion Sensor

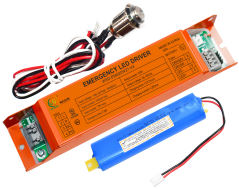


**BRI810-B-M8**  
Mounts in an outdoor lighting fixture and provides multi-level control based on motion and/or daylight contribution



**RC-100**  
Remote Controller

## EMERGENCY BACK-UP (SOLD SEPARATELY)



**WSD-EMS8W27-XX**  
8W Emergency Backup Battery  
LED Driver

**WSD-EMS15W27-XX**  
15W Emergency Backup Battery  
LED Driver

**WSD-EMS20W27-XX**  
20W Emergency Backup Battery  
LED Driver

## ORDERING INFORMATION

EXAMPLE:

**WSD-PGC45W27-50K-D-M / WSD-PGC45W27-50K-D-M**

WSD	PGC	45W	27	50K	D	M
COMPANY	PRODUCT	WATTAGE	VOLTAGE	CCT	FINISH	CONTROL
WSD LED INC	PGC Parking Garage Canopy	45W - (45W) 07W - (70W)	27 (AC120-277V)	40K - (4000K) 50K - (5000K)	D - (Dark Bronze) W - (White)	M - (Motion sensor)

# LED Parking Garage Canopy Series

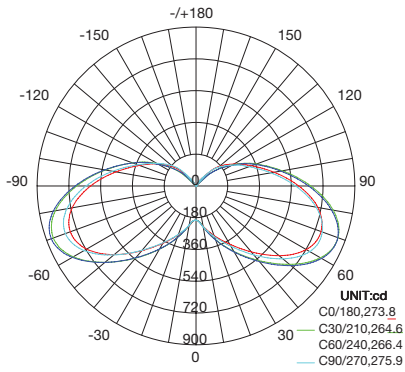
Wattages: 45W, 70W

## PHOTOMETRICS

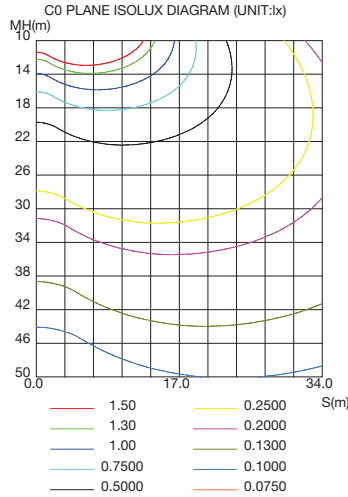
For complete IES files, please visit our website.

### WSD-PGC45W27-50K

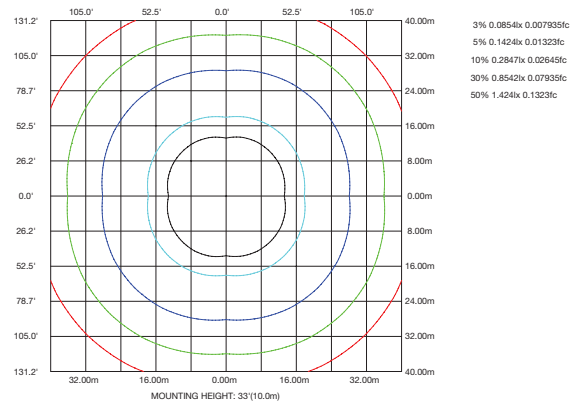
LUMINOUS INTENSITY DISTRIBUTION DIAGRAM



AVERAGE BEAM ANGLE(50%):270.2 DEG

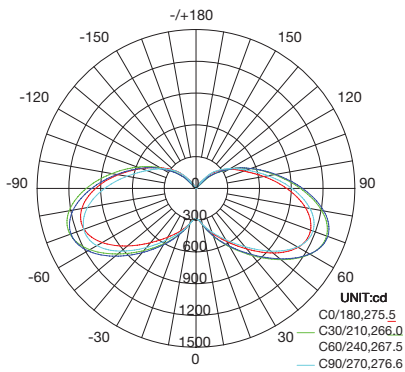


ISOLUX DIAGRAM

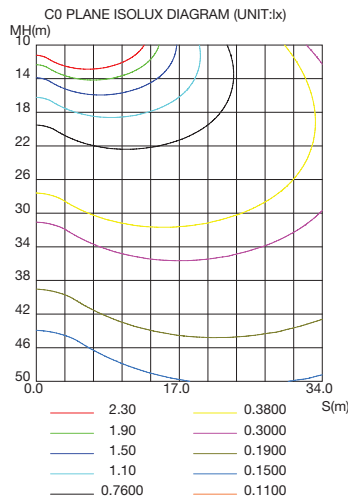


### WSD-PGC07W27-50K

LUMINOUS INTENSITY DISTRIBUTION DIAGRAM



AVERAGE BEAM ANGLE(50%):271.4 DEG



ISOLUX DIAGRAM

