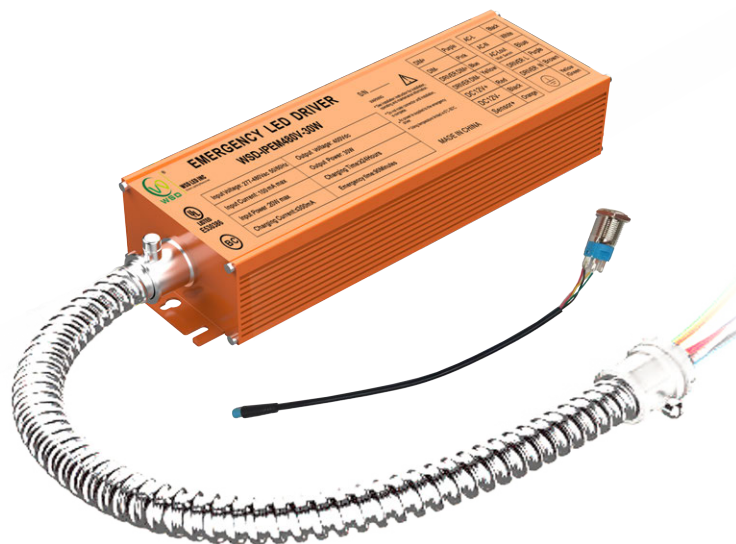


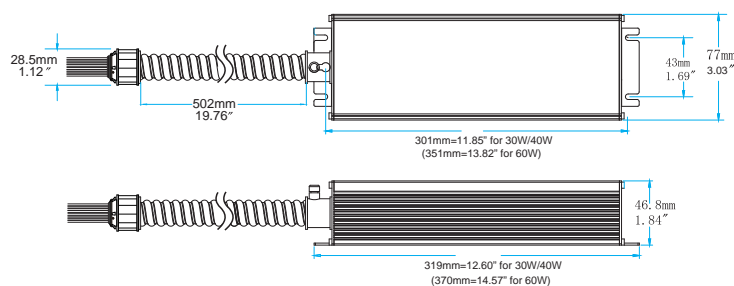
FEATURES

- UL924 listed for factory and field installation.
- Constant power output.
- High Voltage Input : 277-480V AC.
- Meets or exceeds all NEC, IBC, and Life Safety Code Emergency Lighting Requirements.
- Suitable for use in dry, damp.
- Built-in lithium battery.
- RoHS Compliant.

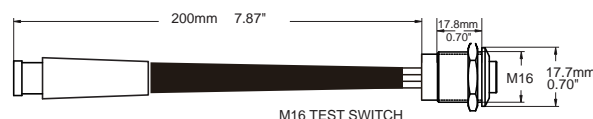


DIMENSION

30W : L*W*H=319x77x46.8mm(12.60"x3.03"x1.84"), mounting center 301mm(11.85")



Accessory:

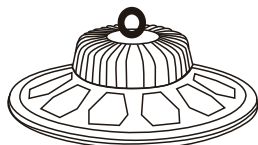


APPLICATIONS

For 0-10V dimmable 400VDC INPUT LED fixtures, such as LED UFO highbay, linear highbay...



Linear
High Bay



UFO
High Bay

PRODUCT ADVANTAGES

CEC Title 20 Compliant

High efficiency performance meet CA Title 20 battery charge efficiency standards

Constant Power Performance

Constant wattage delivery maintains illumination level for the full emergency runtime with no degradation

SPEFICATIONS

Input Voltage	277-480V AC, 50/60Hz	Output Voltage	400V DC
Input Current	100mA max.	Ambient Temp	5 °C ~50 °C
Input Power	20W max.	Output Power	30W
Emergency Time	90 minutes	Battery Type	Lithium ion
Charging Time	≥24 hours		

30W/40W/60W

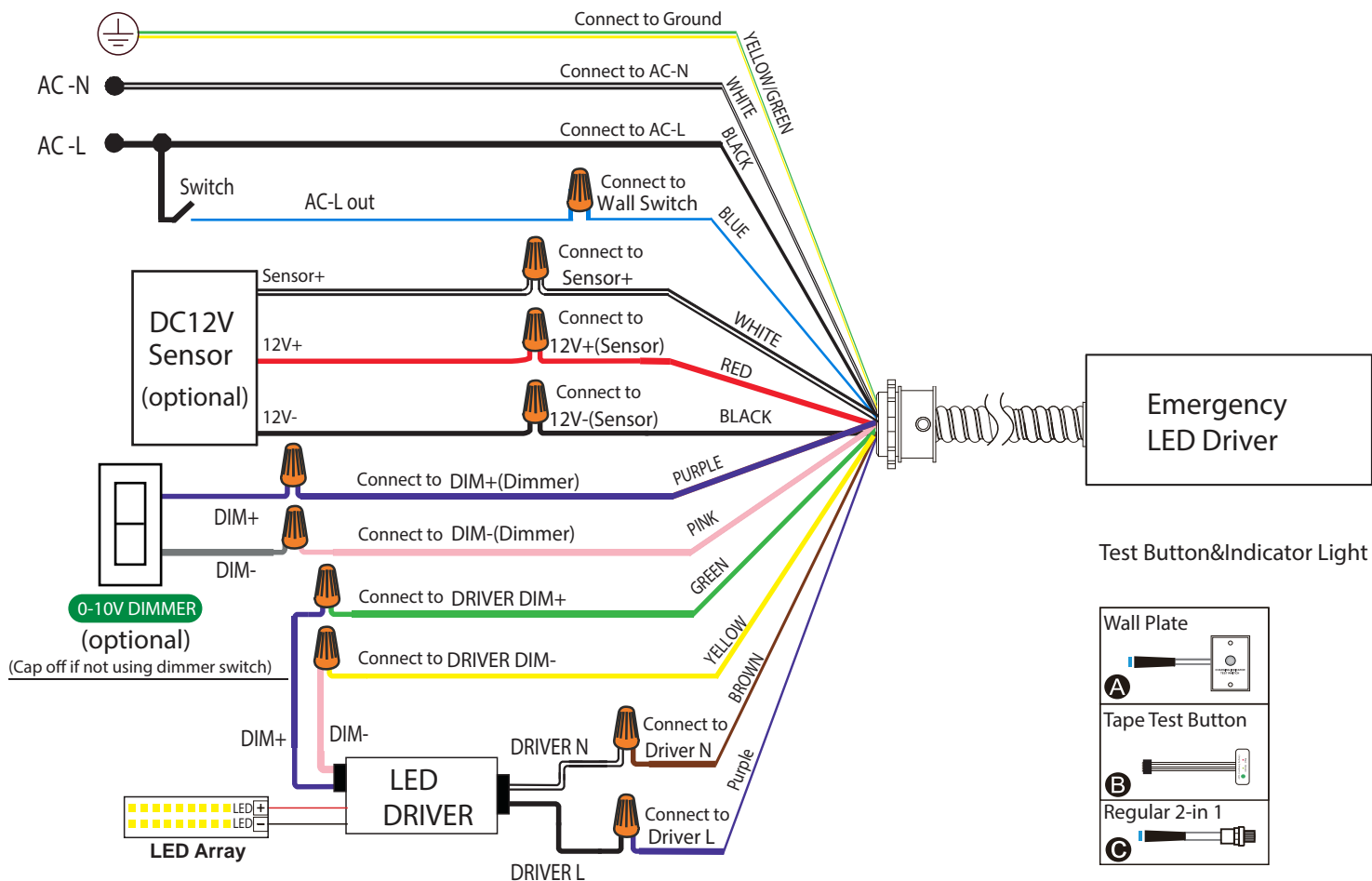
277-480Vac

WIRING DIAGRAM



IMPORTANT

Emergency Driver Dim+ (Green) , Driver Dim- (Yellow) has to connect with LED driver DIM+ and DIM-
Will NOT operate if not connected.

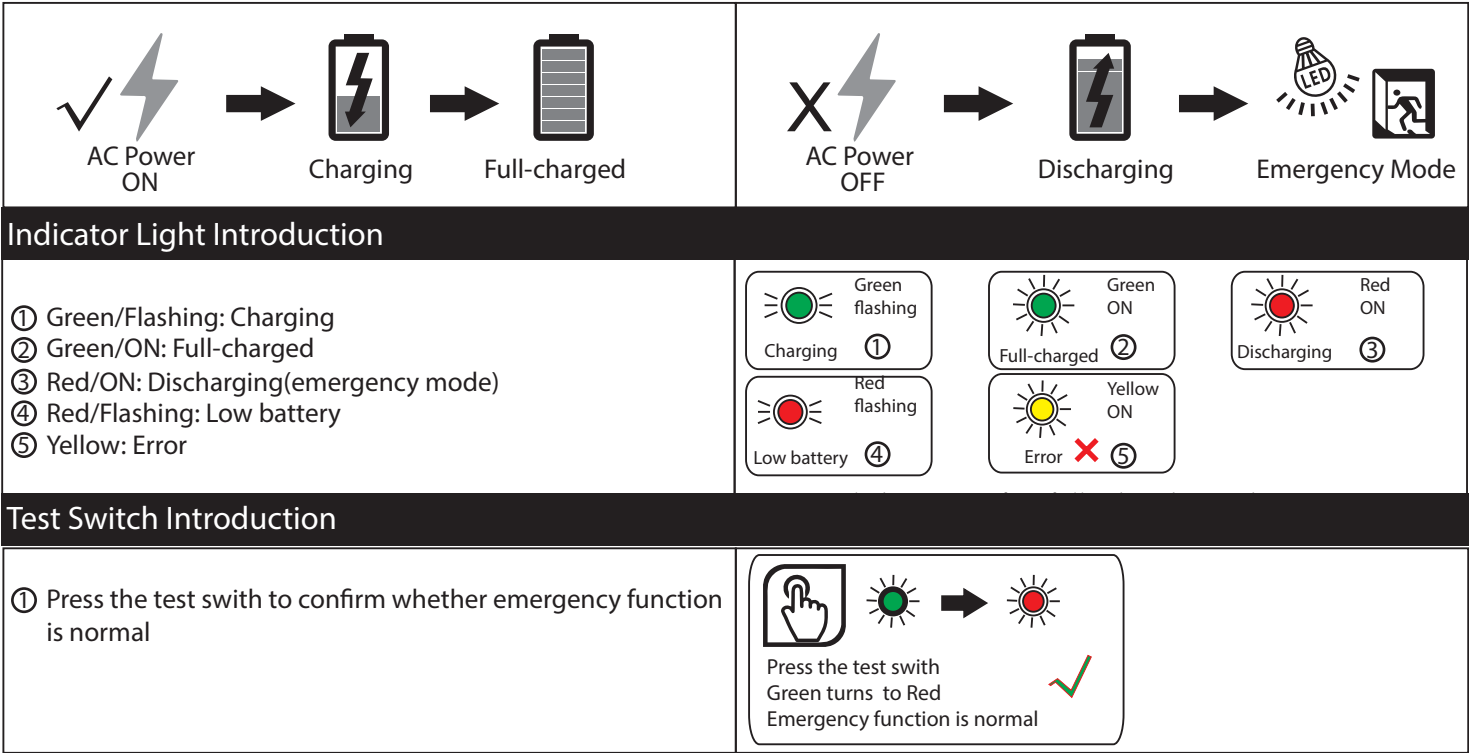


OPERATION

AC Operation: AC power is present. The AC driver operates the LED load as designed. The emergency driver is charging in a standby mode. The green indicator light flashes shows that the battery is charging. The green indicator light becomes stable shows that the battery is full charged.

Emergency Operation: When the AC power goes out ,The emergency driver detects the AC power outage and automatically switch to the working emergency mode. The red indicator light on indicates that it is discharging, the red indicator light flashes to indicate low battery power. The red indicator light off indicates that the discharge is complete. When the AC power is restored, The emergency driver backs to AC power working and starts recharging.

Malfunction Operation:
When the emergency LED driver fault, the yellow indicator light on



IMPORTANT SAFEGUARDS
When using electrical equipment, basic safety precautions should always be followed including the following
PLEASE READ AND FOLLOW ALL SAFETY INSTRUCTIONS.

- CAUTION:** RISK OF SHOCK-disconnect emergency and normal input power sources before servicing
- ASSEMBLY and FIELD INSTALLATION WIRING: WARNING:** AC power must be off before proceeding with assembly or installation of emergency driver.
- IMPORTANT:** An un-switched AC power source is required(277-480Vac). It is designed for fixtures listed for dry and damp locations
- IMPORTANT:** Customers are advised to charge emergency LED driver 24 hours every 6 months during storage.
- CAUTION:** Make sure all electrical connections conform to the National Electrical Code and all applicable local regulations.
- CAUTION:** This is a sealed unit. Components are not replaceable. Replace the entire LED Emergency Backup unit when necessary.
- CAUTION:** Equipment should be mounted in locations and at heights where it is not be subjected to tampering by unauthorized personnel.
- CAUTION:** The use of accessory equipment is not recommended by the manufacturer and may cause an unsafe condition.
- CAUTION:** Use with grounded, UL Listed, dry or damp location rated fixtures. Case should also be grounded.
- CAUTION:** Battery is rechargeable Li-ion type and must be recycled or disposed of properly
- CAUTION:** Suitable for use in 5°C -50°C ambient temperatures
- CAUTION:** This product is for use in indoor fixtures only. Do NOT use near heated air handling outlets or hazardous locations.. Do not let power supply cords touch hot surfaces. Do not mount near gas or electric heaters. Do not use this equipment for other than its intended use. Failure to follow this may cause an unsafe condition and will void warranty. Servicing of this equipment should be performed by qualified personnel only.