

Instruction for solder fume purifier

SMOKE PURIFYING FILTER

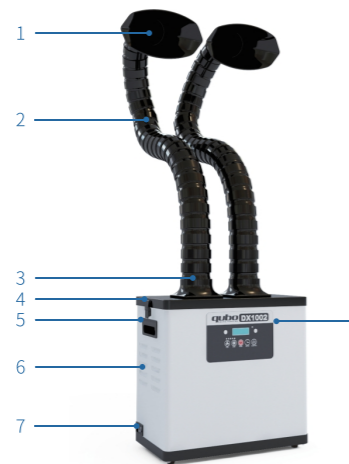
V21.04



Appearance structure

This product is suitable for all places where smoke, peculiar smell, dust, poisonous and harmful gas will be produced. Such as Electronic appliances, toy manufacturing, precision hardware, laser field, the use of variable single, double station and multilayers design.

The filter device can adjust the air volume according to the amount of waste air. Effective adsorption and filtration purification can reach 97%. The purified air can be released directly in the room.



- 1.Smoking hood
- 2.Slubby tube
- 3.Flange seat
- 4.Buckles
- 5.handle
- 6.Air outlet
- 7.Three in one switch
- 8.control panel

*Note: the length of smoking tube can be customized according to customer requirements.

Specification parameters

• model	Single station model	Dual station model
• Air inlet interface (mm)	Φ115	Φ115*2
• Input voltage (V)	220	220
• Maximum power (W)	80	200
• Wind speed (M/S)	17	11.5*2
• Filtration effect (μm)	0.3 (99.97%)	0.3 (99.97%)
• Noise (dB)	<52dB	<61dB
• Smoking pipe (m)	1.4	1.4
• System flow(m ³ /h)	235	150*2
• Body size (mm)	460*260*515	460*260*515
• Weight (kg)	12	13
No smoking turbe		

*The contents are subject to update without prior notice.

Packing list



After opening the packing box and taking out the machine, please carefully check whether the following accessories are missing or damaged. If one item is missing or damaged, please contact Fumego customer service center or dealer.

Main machine	1 host
power cable	1 root
Smoking tube	Match according to the number of air inlets
Smoking hood	Match according to the number of air inlets
warranty card	1pcs (printed inside the instruction manual)
Filters	1Set (installed in the machine)
instructions	1pcs

Notice to users

Dear users

For your safety, health and rights, please pay attention to the following matters:

Safety summary of pre use inspection	security profile  
1.Is the appearance of the machine damaged	1.This product is forbidden to be used at high temperature (ambient temperature over 60 °C), explosive, liquid and oil contaminated places.
2.Is the power switch off	2.The power cable must be grounded when using.
3.Whether the filter element inside the machine is placed smoothly	3.The internal voltage of the product is as high as 310V, which is forbidden to be opened by non professionals. Check and repair the back plate.
4.Whether the body door cover and box are installed firmly	4.When the product is working, do not take or place the filter element.

Precautions for using the machine

1.The power input of the machine should be used within the specified rated voltage range (marked by the power on the fuselage)

It is strictly forbidden to use when the voltage is too high or too low.If you find that the voltage of the environment is unstable, please shut down the machine and Pull out the power plug of the equipment and use it after the voltage is stable.

2.When using the machine, the ambient temperature range of the gas and dust inhaled by the air inlet is: normal temperature - 50 ° C, Do not use above or below this temperature range.

3.When using the machine, the humidity of the gas and dust inhaled by the air inlet is 40% - 80%. If the humidity is too high, it will

The filter element will lose efficacy quickly and the internal circuit of the machine will be damaged. It is forbidden to use in the environment with humidity higher than 80%.

4.It is strictly forbidden to use the machine without filter element and directly inhale oil fume or dust

Particulate matter can cause damage to fans and control systems. Failure caused by using the machine under the above conditions shall be paid for Maintenance, will cause you greater losses.

5.It is strictly forbidden to continue to use the machine after the filter element is seriously blocked, which will greatly shorten the service life of the machine, and even

It will cause damage to the machine. The machine should be cleaned and maintained regularly and the filter element should be replaced regularly. To ensure that the machine is in good condition

Work under the state.

6.When the filter element of your machine is blocked and the suction force becomes smaller or the filter element fails to remove the odor, the Please replace the original filter element.

7.It is strictly forbidden to open the inside of the machine for maintenance without permission.The warranty sticker on the fuselage allows you to enjoy after-sales service Please do not tear or damage the warranty sticker of the fuselage.

After sales service warranty clause

The warranty (free repair) of qubo products within the warranty period shall be implemented from the date of purchase.

1.During the warranty period, the goods can only be repaired at qubo's headquarters or dealers recognized by qubo Show this warranty certificate and purchase invoice

2.Since the date of purchase, the main engine is guaranteed for three years. (Note: filter element and other accessories are consumables and are not covered by warranty(inside)

3.In any of the following circumstances, even within the warranty period, it can not be treated as warranty, but can be charged handle:

a. Damage caused by failure to use, maintain and keep in accordance with the operation instructions; B. losses caused by improper operation, abnormal voltage and falling;

c. D. It is impossible to prove that the machine is within the valid warranty period;

e. The information on the warranty certificate is inconsistent with the commodity identification or altered; F. damaged due to nuclear chemical or chemical corrosion;

g. Damage caused by irresistible factors (lightning, earthquake, flood, fire and other natural disasters);

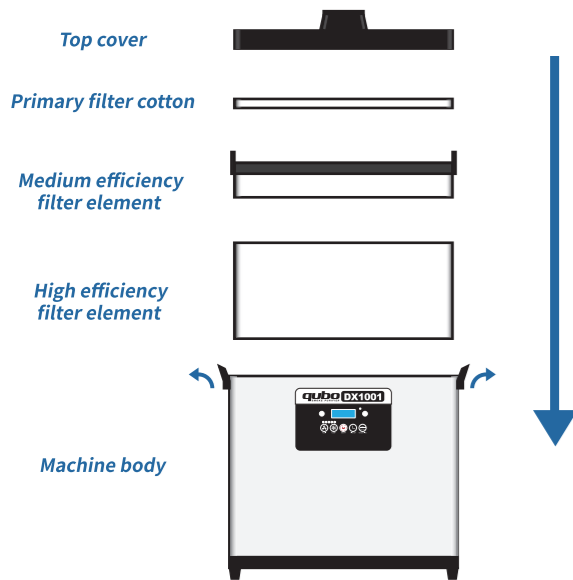
4.Qubo company reserves the right of final interpretation of the after-sales service terms.

*The company will not be responsible for the loss caused by the above reasons.

Not covered by warranty.

Installation instructions

Open the side buckle of the main Machine and remove the Top cover. The order of the filter elements is washable filter cotton, oil absorption grid filter element, and Medium efficiency filter element and high efficiency filter element. Pull out the filter element to be replaced and install it in reverse according to the picture.



Take out the smoke collecting cover and smoking pipe from the accessory box, clip the smoking cover into the smoking pipe, and then insert it into the flange of the top cover of the equipment

Operating instructions

1. Install the smoking pipe into the flange of the top cover, and connect the other end with the smoke collecting cover; rotate the pipe body according to the application situation

Adjust the direction of the smoking mouth.

Note: when adjusting the direction of the smoke pipe, try to keep the pipe body gentle bending, otherwise the suction force will be affected. Smoking mouth

To face the working point, the distance should be kept within 15cm as far as possible to ensure that the smoke and dust can be completely inhaled.

Note: please do not use in the place with high air flow, so as to prevent the suction from decreasing or disappearing; adjust the pipe properly

The longer the channel length is, the smaller the suction is; conversely, the greater the suction is.

2. Connect the power cord and check whether the power plug is stable and firm.

Digital display panel



· Power on key - standby switch of the whole machine. Press down the orange light and the whole machine will start to run. The whole machine stops when it is shut down Work. (Note: to shut down the machine for a long time, please turn off the power switch and unplug the power cord)

· Air volume increase key - when the machine is running, press this key, the number on the nixie tube display will increase by 10. Maximum 100

That is, the machine runs at full speed.

· Air volume decrease key - when the machine is running, press this key, the number on the nixie tube display screen will decrease by 10, and the minimum value will be 10.

· Timing shutdown key - press this key when the machine is running, the nixie tube display screen will display hxxx, and then press the wind speed to adjust

When setting the timing, press the timing key again to adjust the number, tens and hundreds of the time,

After setting, press the OK / set key to confirm the end of the timing device. Where XXX represents the hours the machine runs regularly

The maximum is 300 hours, and the minimum is 1 hour. After setting, press the timing key to query the remaining time and number

The code tube display length displays hxxx. For example, h005 means that it will be automatically shut down in 5 hours. If the time is set to h000, you can

Cancel the timer.

· Setting key - when the machine enters the alarm state and the buzzer rings, you can press this key once to cancel the beep. Not entered

In case of alarm, press this key to query the accumulated running time of the whole machine.

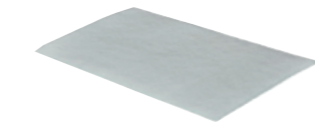
· Panel lock key - press this key when the machine is working, all the function keys on the operation panel of the machine will be locked

Make. Press this key again or disconnect the power supply of the whole machine and restart the machine.

Filter system replacement and maintenance

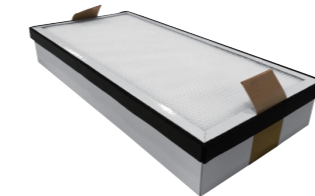
Note: do not install the filter element or use it with inferior filter element in the market. In this case, the equipment is not covered by the warranty. Please replace the original factory configuration filter element regularly and fill it up in order to avoid more losses.

Primary filter cotton



Usage: place the front side (wool side) upward on the medium efficiency filter element, and dust is accumulated on the original effective cotton
If the area is more than 70%, please replace it with new primary cotton in time.

Medium efficiency filter element



Usage: handle face up, placed inside the high efficiency filter element, when the filter element is full of dust, obvious
If the suction is affected, clean it immediately. If it cannot be cleaned, please replace the medium efficiency filter element.

High efficiency filter element



Usage: face up according to the label, place it at the bottom of the machine, when the filter element is obviously unable to
The service life is terminated when the odor contained in the smoke is effectively removed.

Trouble shooting

◆ Please cut off the power supply before checking and repairing the equipment!

1. Phenomenon: the system still works, but the air volume is weak and the suction force is greatly reduced.

Cause: the air inlet is blocked or the filter element reaches saturation failure and forms blockage.

Check: turn off the power supply, open the top cover, check whether there are foreign matters blocking the air inlet; and then check whether the air outlet is blocked

Plug. If there is no abnormality after inspection and treatment, restart the machine. If the air volume is still small, the filter element should be replaced.

2. Phenomenon: the machine will automatically shut down after starting, turn on again and repeat the above phenomenon.

Cause: the internal air flow is blocked, and the resistance of filter element is too large, which leads to excessive starting current of fan and automatic protection shutdown.

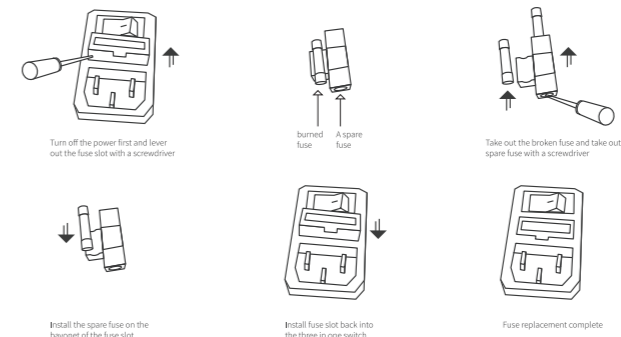
Check: turn off the power supply, open the top cover, and check whether there are foreign matters blocking the air inlet; if there is no abnormality after inspection and treatment

Adjust the gear to the minimum, and then restart to adjust the gear to the appropriate air volume position.

Fuse replacement

If the equipment beeps, first confirm whether the control valve is fully opened, and then confirm the indication of opening the three in one switch

Whether the light is not on, if not, make sure there is no problem in the circuit, the fuse may be burnt out.



Please read this manual carefully before use and keep it properly for future reference.

Warranty card of QUBO device

Commodity information	commodity name	factory number
	model	Production date of commodity
Customer information	Name of the company	
	Address	
	contacts	
	contact number	

Maintenance record	fault condition	maintenance results
Date	customer signature	repairman signature