

# INSTRUCTION MANUAL

## WATER CURTAIN TYPE SPRAY BOOTH



- Acid & Alkali Resistant /Corrosion Resistant
- Air Flow & Water Curtain Spray Design
- Three Direction Lighting
- Two Filtration: Double Mist Filter Cotton & Black Activated Carbon Filter Block
- Three Motor Fans
- 720°Omnidirectional Vision

**GAHLERI**  
Atlantis Fantasy Series



## SAFETY PRECAUTIONS

Unqualified use and improve maintenance of the spray booth could result in serious personal injury. The following safety instructions should be operated to avoid any risk! Please read all of these instructions carefully and follow them!

1. Choose the right tools and power supply tie-in with right frequency and voltage according to the local power supply. Otherwise, the motor may be damaged and/or the fire may be caused.
2. Please check and make sure that the machine, including the connection, switch is all in good conditions.
3. The spray booth must be operated in accordance with the current safety regulations, and all the power sockets must be earthed. Please do not touch the electric cable with the wet hands.
4. The unauthorized conversion, modification or disassembly of the products is inadmissible because of safety and approval reasons.
5. Keep working area clean and tidy. Unused tools should be stored in their respective places. Ensure that the working area is well ventilated.
6. Never operate the spray booth in the presence of flammable liquids or gases. The Spray booth may produce sparks when in operation. Do not use the booth in areas where painting colors, petrol, chemicals, adhesives, and other flammable and explosive substances are present.
7. Keep out of the reach of children. Never allow children and other irrelevant persons touch the spray booth and its power cord. All unauthorized persons should be kept clear of the working area.
8. Don't open or tamper with any part of the spray booth. Contact an authorized service center.
9. The spray booth must be used in suitable environment (well ventilated, with an ambient temperature between +5°C and +40°C).
10. If you have reason to assume that safe operation is no longer possible, disconnect the device immediately and secure it against inadvertent operation. If you find any potential danger during using, please disconnect the power immediately.

# 1. TOOL FEATURES

## Product Components



## Auxiliary Tools



## 2. HOW TO ASSEMBLE

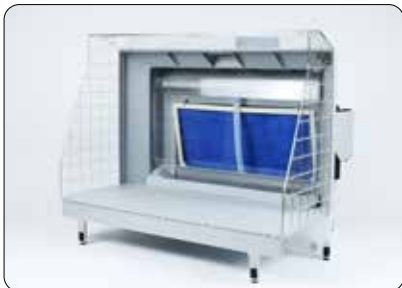
### Step 1



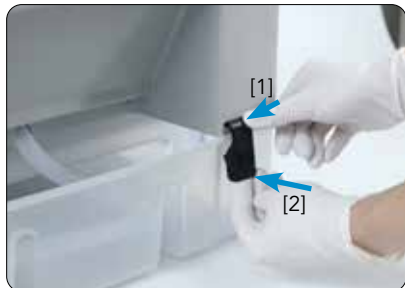
1. Open and hold the front cover board up to start installing.



2. Pull both the right and left transparent side wall board to stand vertically, then fasten the inside snap joint of both sides.



3. Confirm that it is installed as shown in the figure, then turn to the back.



4. lock all the four buckles

### Step 2



1. Insert the water pipe into the pump ( Let the pipe be curved circle ).



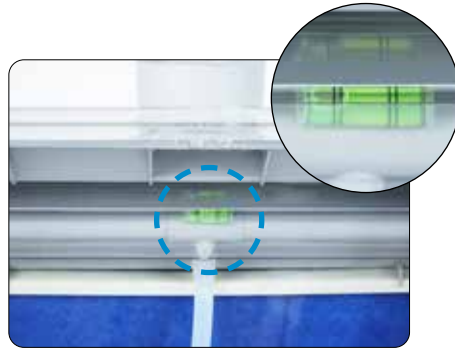
2. Insert the plug of the water pump into the power plug on the machine. Do not plug it into other power connectors.

# 3. HOW TO ASSEMBLE

## Step 3



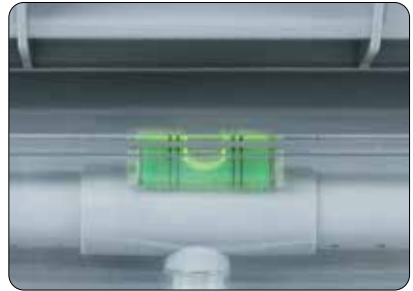
1. Insert the water pipe into the pump ( Let the pipe be curved circle ).



2. Check whether the bubble of the level is in the center.



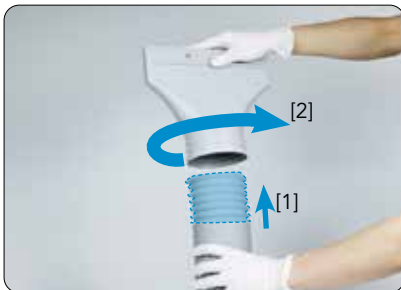
3. Rise and reduce the feet height by rotating the 4 knobs on water sink.



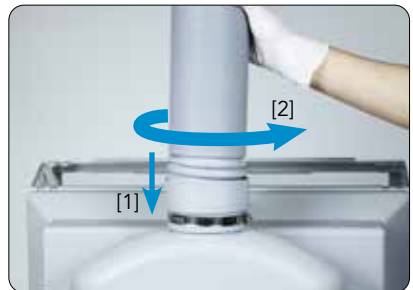
4. When the spirit level bubble is at the center, the leveling work is completed.

Note: Please take away the level before starting the water curtain.

## Step 4



1. Stretch the bottom part for connecting the hose. Rotate anti-clockwise direction to connect the tube head.



2. Connect the booth hose : Screw the hose in anti-clockwise direction.

## 4. HOW TO ASSEMBLE

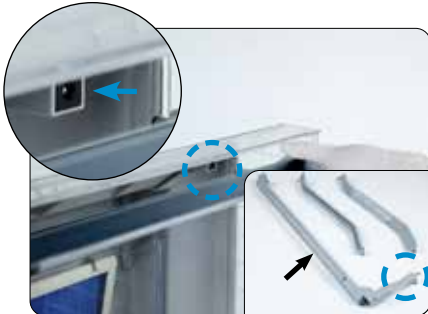


3. Extend the Air Hose with the length needed and fold the Air Hose with the actual needs and installation conditions.

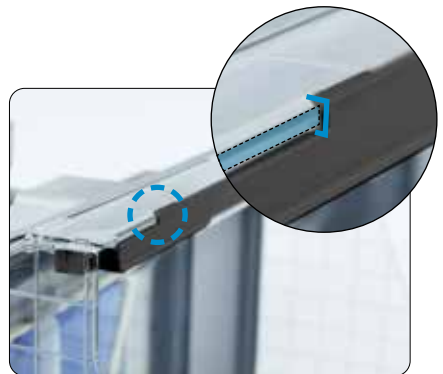


4. Install the tube head out of the window and make sure that the Air Hose and the tube head are well installed.

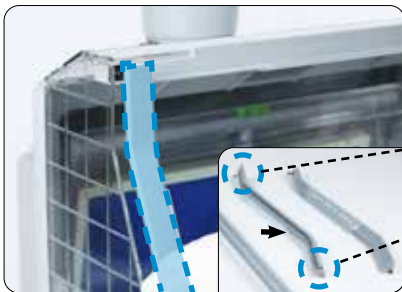
### Step 5



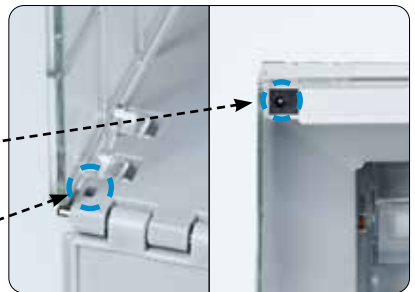
1. Install the LED Lighting System on the top panel, the right insert into the socket.



2. Put the LED Tube hanging on the top panel.

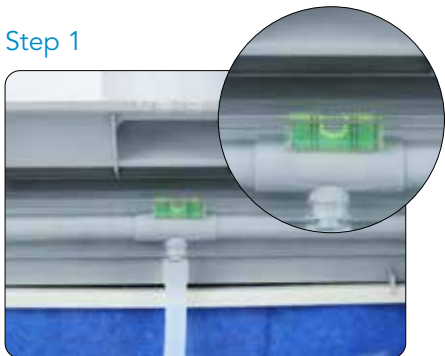


3. Plug the bulgy part to the small hole ; plug the left LED tube into the board socket. Then install the right LED tube in the same way.



# 5. HOW TO USE

## Step 1



1. Make sure the level bubble is in the center again. Then take out the level.



2. Please make sure that the plug is well plugged in.

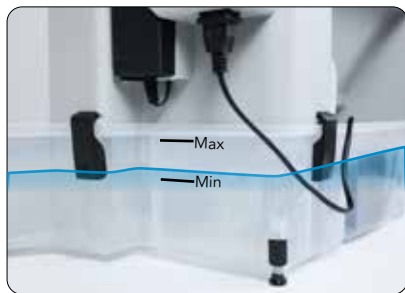
## Step 2



1. Water should be injected before turn on the power switch of water pump.
2. Spray booth and the water tank be connected by the buckle.



1. Add water to the water sink.



2. Please note that the level is between the minimum and maximum.



3. Switch on (red switch), and water will flow down the water board. Direct the water curtain by finger to let water cover the whole board.



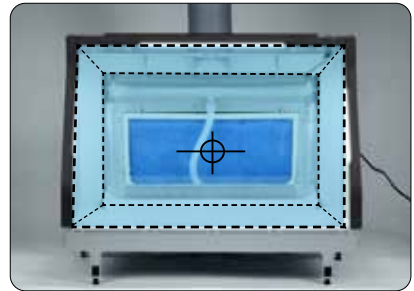
4. If the water continues to flow out of the corner, please turn off the switch and increase the height of this side slightly.

# 6. HOW TO USE

## Step 3



1. Press the green switch to turn on the LED light, and turn the knob to adjust the air flow speed.

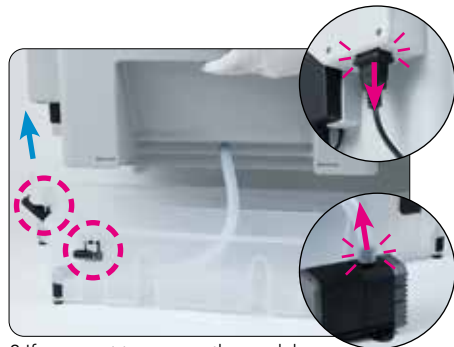


2. Please paint within the scope of the Spray Booth and aim the Airbrush at the water curtain as far as possible. This will provide the best protection.

## Step 4



1. Change the water in the tank at regular intervals. It is recommended to use the attached water pump to pump water (siphon principle)



2. If you want to remove the pool, be sure to disconnect the water pipe and plug first.

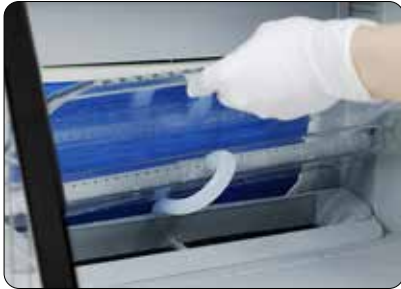
## How to maintain the Spray booth with Water Curtain?

1. When you don't use the Spray booth with Water Curtain, please unplug the machine and be carefully store the plug into the box.
2. Please take out all the water when the spray booth with water curtain is not used for a long time.
3. Every time you want to use the Spray booth with Water Curtain please test the Machine with Water Spirit Level to make sure that the Spray booth is well installed and horizontally installed.



# 7. HOW TO CHANGE THE FILTERS

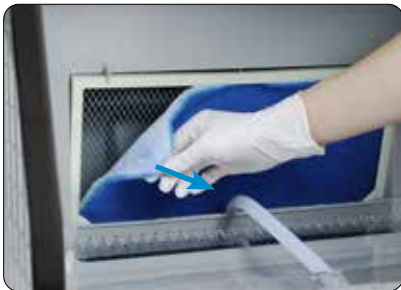
## Step 1



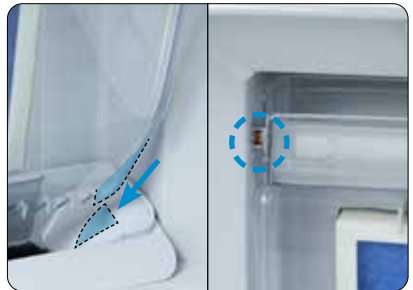
1.Pull out the water board along the slide rail then lay it on the working table.Pour the rest water into the sink.



2.Take out the two black activated carbon filters.The black filters can be cycle used as it is activated carbon material. Install it back after cleaning.



3.Take out the filter directly to replace new one. Unless the sponge is very dirty and affects the ventilation effect. Otherwise, it is unnecessary to replace



4.Install the water spray board, put the bottom of the left and right side into the groove, push the board inside.Straighten the water pipe.

## TECHNICAL INFORMATION OF PRODUCT

Motor:	DC12V 5A	H-Max(Water Pump):	1.5m
Input:	AC100-240V 50/60HZ	Max Water Temp:	35°C
Air flow:	11m <sup>3</sup> /min (Adjustable)	Minimum Water Level:	6L
Motor Power:	45W	Maximum Water Level:	9.5L
Working Voltage(Led light):	12V	Water Curtain Area:	47x28 cm / 18.5x11 INCH
Luminous Flux (Led light):	2430LUX	Extend Dimension:	60x49x50 cm / 23.6x19.3x19.7 INCH
Noise Level:	53db	Inner Dimension:	58x24x36 cm / 22.8x9.4x14.2 INCH
Output (Water Pump):	15L/min	Fold Dimension:	60x27x46 cm / 23.6x10.6x18.1 INCH
Max Depth (Water Pump):	2m	Net Weight:	8.7KG / 19LBS

Brand : Gaahleri

Product Name : Suction & Exhaust Spray booth

Model : AF-720

Company Name : Ningbo Gaile Network Technology Co., Ltd.

Store : Gaahleri airbrush store

Email Adress : gaahleri@outlook.com

Follow Us on : Twitter/Instagram/Facebook/Youtube:Gaahleri Airbrush

# GAHLERI