

GAHLERI

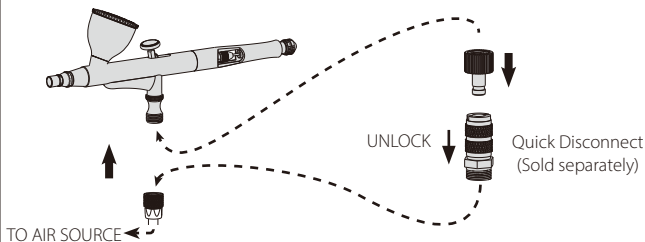
QUICK START GUIDE

For Gaahleri Airbrush GHAD-39 , GHAC-98D

www.gaahleri.com

1

BEGIN

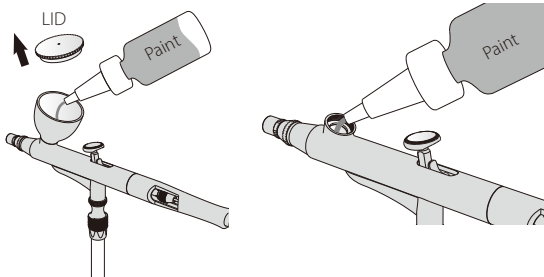


Begin by attaching the end of an airbrush hose (1/8" BSP) to your airbrush.

Attach the male part to airbrush and the female part to air source, pull down side to unlock.

2

PAINT

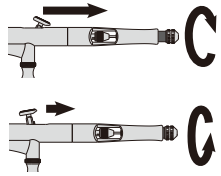
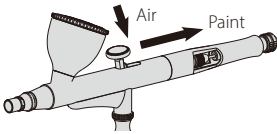


Put a few drops of paint in cup, dilute paints to look like milk if needed before pour into cup.

Put a drop or two of paint directly into the fluid cavity to get a better view.

3

START AIRBRUSHING



Turn your air compressor on.
Press down the main lever to
release air flow, and pull back to
release paint flow.

The preset fluid control knob
(if equipped) can control the
retracement of main lever.

4

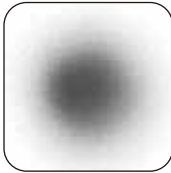
PERFECT SPRAYING EFFECT



Too thick.



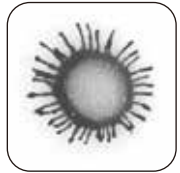
Dilute paint
with THINNER.



Perfect



Reduce air pressure.
or
Add undiluted paint.

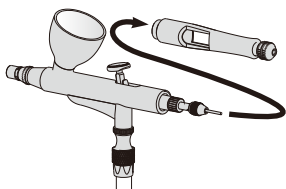


Too thin.

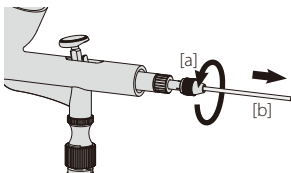


ATTENTION

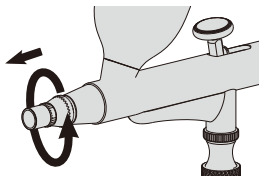
1. Please do some test on paper before painting. Use a tiny bits of paint or water.
2. DO NOT spray noxious, flammable, explosive material.
3. After finishing the work, please clean the airbrush as soon as possible (use airbrush cleaner).
4. Please take care when cleaning the needle and nozzle. Otherwise it may cause poor spraying effect, or even hurt yourself.
5. When not using Gaahleri airbrush for a long time, please clean it totally and place in good conditions.
6. Gaahleri airbrush is already pre-installed and full tested. If you have any question, please contact us through the email address provided at the end of manual.

5**DISASSEMBLE IN ORDER**

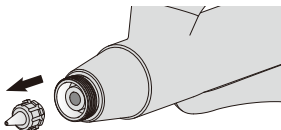
[1] Remove the handle.



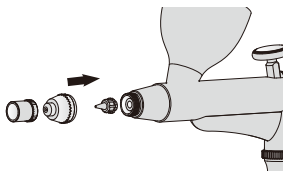
[2] Loosen the needle chucking nut[a], pull out the needle[b].



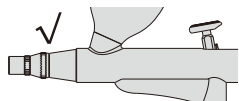
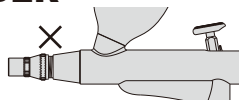
[3] Remove the air cap and nozzle cap.



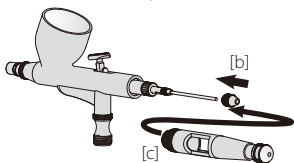
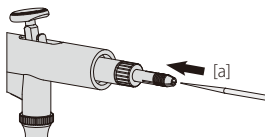
[4] Remove the nozzle.

6**ASSEMBLE IN ORDER**

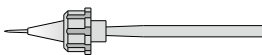
[1] Put the nozzle, nozzle cap and air cap back.



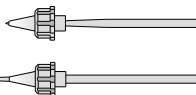
[2] Please tighten the nozzle cap.



[3] Reinstall the needle[a], needle chucking nut[b] and handle[c]. Please avoid hitting the needle's front end.



Right combination.

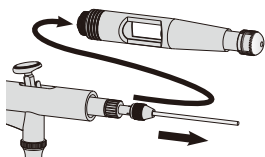


Wrong combination.

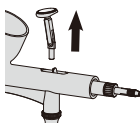
The package includes two sets of needles and nozzles of different sizes. Incorrect matching may result in either excessive needle exposure or inadequate exposure. Please ensure to store them separately

7

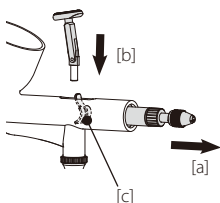
ADD LUBE



[1] Remove the handle and loosen the needle chucking nut, pull out the needle.



[2] Pull up the main lever and apply a few drop of lube.



[3] Pull the needle chucking guide[a] back and put the main lever[b] back, do not tip the lever guide[c]. Install the needle and handle back.

Brand: Gaahleri

Product Name: Gravity Feed Airbrush

Company Name: Ningbo Gaile Network Technology Co., Ltd.

Store: Gaahleri airbrush store

Email Address: gaahlerilab@outlook.com

FOLLOW US on Twitter/Instagram/Facebook/Youtube: Gaahleri Studio

GAHLERI