

Smart Recessed Slim LED Panel Light

User manual



Please read before use. Keep the instructions for future references.

INSTALLATION INSTRUCTIONS

ALL FIXTURE MUST BE INSTALLED IN ACCORDANCE WITH CURRENT APPLICABLE ELECTRICAL CODES. CONSULT A QUALIFIED ELECTRICIAN TO ENSURE CORRECT BRANCH CIRCUIT CONDUCTOR.

BEFORE STARTING INSTALLATION, SHUT THE LINE FEED POWER OFF USING THE CIRCUIT BREAKER.

<p>Drill hole in ceiling and prepare supply wires. Install and unshield the line feed wire 12"(25cm) and strip wires 5/8" (1.6cm). Bring supply power to junction box through knockout.</p> <p>MODEL AND HOLE SIZE: LA-RP4W9 4-1/8" (Ø 105mm) LA-RP6W12 6-1/8" (Ø 155mm)</p> <p>1</p>	<p>Open the lid of the junction box. The white wire is naught wire (AC-N),the black wire is live wire (AC-L),the green wire is earth wire (E). Though the wiring terminal, connect them to corresponding wire.</p> <p>2</p>
<p>Route junction box through cut-out and connect recessed LED panel to junction box with the quick connector.</p> <p>3</p>	<p>Compress the springs and push the fixture in the opening. It is easier to do one spring at a time.</p> <p>4</p>

Attention:

- Avoid installation near heat source, such as air conditioner outlet, heating outlet, etc.
- Avoid installation near the humidifier and other places where humidity changes dramatically, and avoid installation in the position of direct light, etc.
- Avoid installation in closed basement so as not to weak signal and unable to connect the device. do not connect multiple fixtures to one driver caution risk of fire risk of shock disconnect power before servicing

How to connect wires?

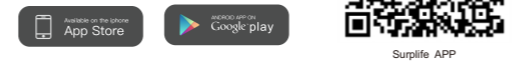
- Peel off the skin to expose the 1-1.5cm length of the wire of the ceiling light and the wire of your house.
- Align the wire of ceiling light with the wire of your house (don't need to distinguish neutral line or live line). Then twist them clockwise into the nuts.
- After the two sets of wires are connected, and pull the cable and make sure that it is tightened.

Product parameters

Suitable Phone OS :	Android 6.0/IOS11.0 or higher
Channels :	5
Color Temperature :	2700K-6500K
Working Temperature :	-20 TO +45 °C
Control Distance :	Visible distance 40M
Voltage :	100-130VAC,50/60HZ
Conection Methods :	WiFi+BLE

Download the APP

Scan the QR code on the right to download "Surplife" APP or download the app from Apple Store and Google Play.



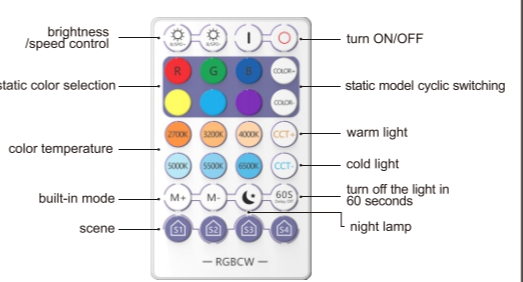
How to connect smart devices through Surplife?

- Open the "Surplife" APP, enter the main page of the APP, click "Add Device" in the middle of the page or click "+" at the top right of the page to enter the "Add Device" page.
- Please place your phone as close as possible to the device you want to add, it will automatically search for nearby devices.
- Click the device you want to add, select a network for your smart device and wait for the device to be added.
- After adding the device, enter the name you like, and click "Next".
- Select the room to which the device belongs, and click "Finish".

How to restore the factory setting for the Recessed Panel Light?

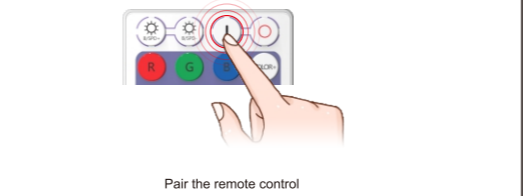
- Before resetting, please make sure the device is turned off.
- Start to reset. Turn on the light and turn off the light, repeat five times (keep 3-5 seconds for each interval).
- The reset is successful, the light flashes for a few seconds, the device is displayed on the "Add device" page (If not, please restart your Wi-Fi and wait for auto refresh).

Smart 2.4G remote controller



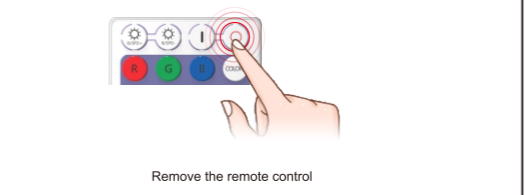
A. Pair the remote control:

After the lamp is powered on, press the power button for 5 seconds immediately (within 3 seconds). When the lamp flashes slowly for 3 times, it means the pairing is successful.



B. Remove the remote control:

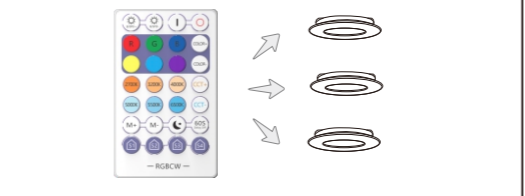
After the recessed panel light is powered on, press the power button for 5 seconds immediately (within 3 seconds). When the recessed panel light flashes for 3 times, it means the removing is successful.



1 One-to-many control

The remote control can be paired with multiple WiFi recessed panel light at the same time, and multiple WIFI recessed panel light can be controlled with one key without limitation.

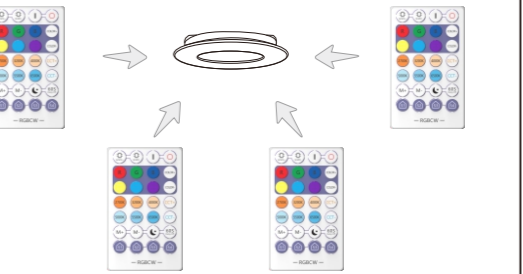
Note: Please refer to the steps of pairing or removing the remote control



2 Many-to-one control

A single WIFI recessed panel light can be paired with multiple remote controls, and each remote control can control the same WiFi recessed panel light separately. (a single Recessed Panel Light can support up to 16 remote controls)

Note: Please refer to the steps of pairing or removing the remote control



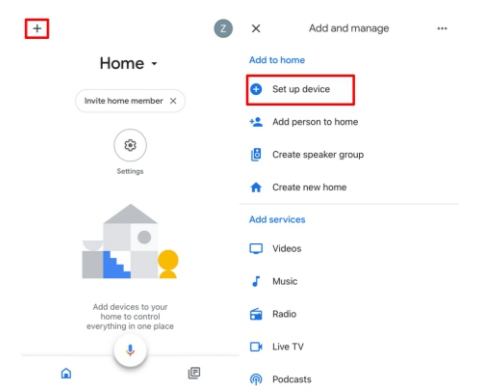
How do I connect to Google Assistant (Binding via Google Home app)?



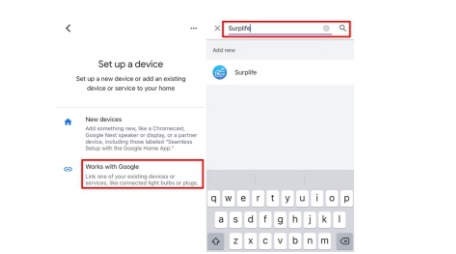
In order to use Google Home to control your smart device and perform voice control, please make sure you have logged in to your "Surplife" account.

Please refer to the following configuration steps:

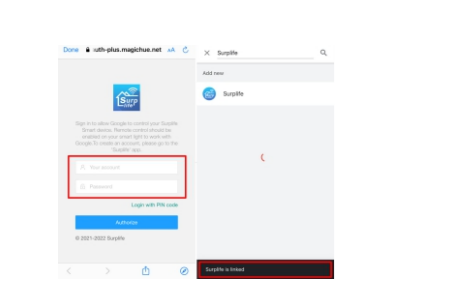
Step 1: Start the Google Home App and click on the "+" at the top left of the homepage.



Step 2: Enter the Set up interface and click "Work with Google". Search for "Surplife", click on the searched "Surplife".



Step 3: It will jump to the "Surplife" login page, enter the "Surplife" account and password.



Step 4: After the binding is successful, all devices are displayed on the Google Home homepage.

After completing the above operations, you can use Google Home for voice control.

- Supported voice commands:
- Turn on <light name>
 - Dim <light name>
 - Brighten <light name>
 - Set <light name> to [50%]
 - Dim/Brighten <light name> by [50%]
 - Turn <light name> [color]
 - Turn on/off all the lights

Changing colors on your lights
Color Options for Google Home control of your smart device:

Blue, Crimson, Cyan, Fuchsia, Gold, Green, Lavender, Lime, Magenta, Orange, Pink, Purple, Red, Salmon, Sky Blue, Teal, Turquoise, Violet, Yellow

For Scenes
You can activate scenes by following voice commands:
Hey Google activate {scene name}
Hey Google turn on {scene name}

How do I connect to Amazon Alexa (Binding via Alexa app)?

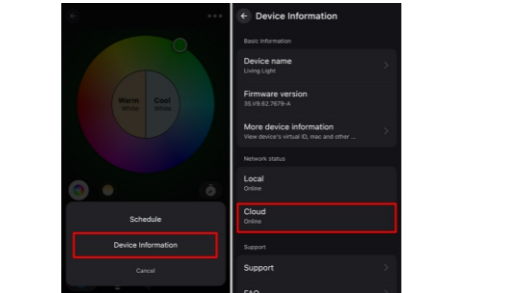
1. Bind via Alexa app

In order to use Amazon Alexa to control your smart device and perform voice control, please make sure you have logged in to your "Surplife" account.

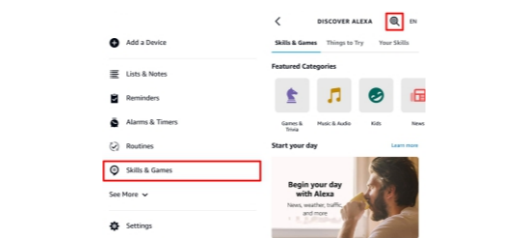
Please refer to the following configuration steps:

Step 1: Add your device and modify the device name, make sure there is at least one smart light in the device list.

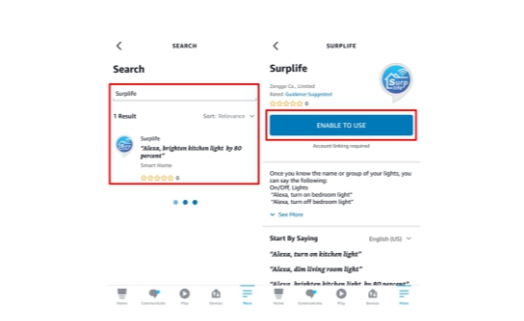
Step 2: Check whether the device is remotely online.
Click the device icon to enter the device control page; click "... " on the upper right to enter the "Device Information" page to check whether the remote cloud is online.



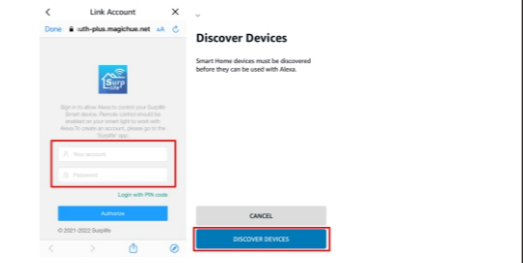
Step 3: Start the Amazon Alexa App, click "More" and "Skills & Games", then click the search icon in the upper right corner.



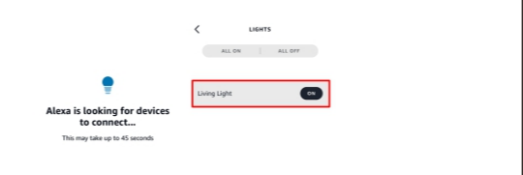
Step 4: Enter "Surplife" and click "Surplife" and "ENABLE TO USE".



Step 5: Enter the "Surplife" App account and password, and then click "DISCOVER DEVICES".



Step 6: After successfully binding the account, the device has been synchronized to "All DEVICES" in the "Device" menu of Alexa.

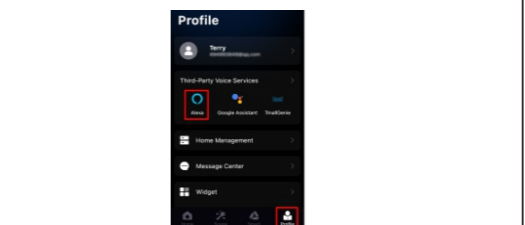


After completing the above operations, you can use Amazon Alexa for voice control.

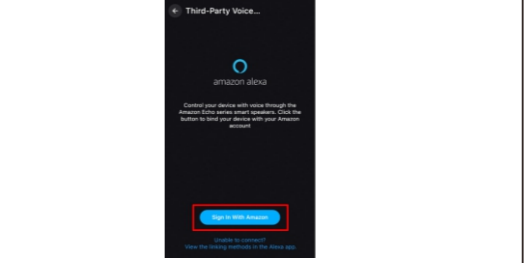
2. Fast binding via Surplife app

Please follow the steps below:

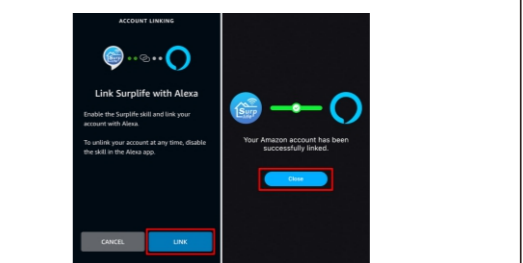
1. Open the APP, enter the "Profile" page, and click "Alexa" or "Third-Party Voice Services".



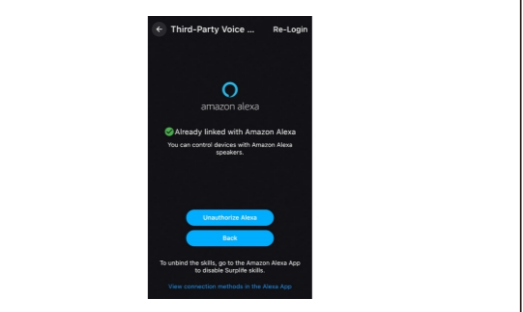
2. It will automatically jump to the Alexa quick binding page, select "Sign In With Amazon".



3. Click "LINK" to connect Surplife to Alexa, and wait for the binding to succeed.



4. After the binding is successful, you can directly control the device through Third-Party.



Supported voice commands:
These are some of the currently supported Alexa voice commands for the smart light.

- Alexa, set [light name] to [0-100%]
- Alexa, turn [light name] on/off
- Alexa, dim/brighten [light name]
- Alexa, increase/decrease [light name]
- Alexa, set the [light name] light to red
- Alexa, change the [light name] to the color blue

For RGBW Light (Change to Warm White)
Alexa, set the [light name] to warm white

For CCT or RGBCW Light (Change to Color temperature)
Alexa, make the [light name] warm white
Alexa, change the [light name] to the cool white
Alexa, set the [light name] to daylight

Changing colors on your lights
Color Options for Alexa control of your smart device:
Blue, Crimson, Cyan, Fuchsia, Gold, Green, Lavender, Lime, Magenta, Orange, Pink, Purple, Red, Salmon, Sky Blue, Teal, Turquoise, Violet, Yellow

For Scenes
You can activate scenes by following voice commands:
Alexa, start {scene name}
Alexa, turn on {scene name}