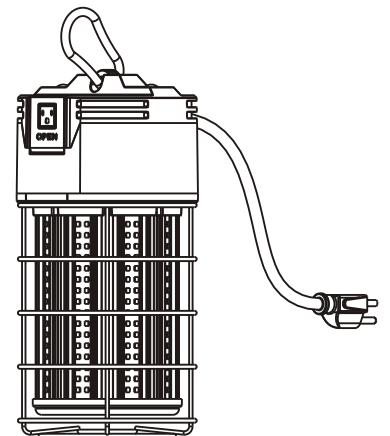
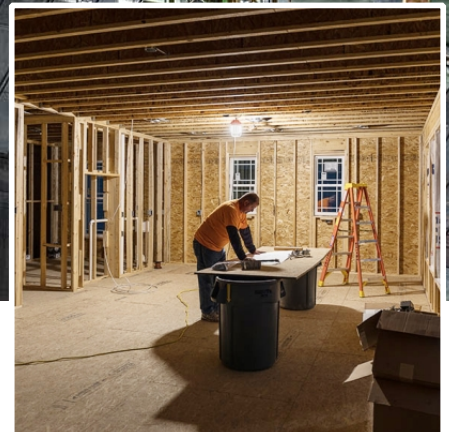


# LED Work Light





## DESCRIPTION

ROMANSO LED Temporary Work Fixture is ideal for a wide range of construction jobsite and maintenance activities with features designed to fit any application. Long lifespan, superior energy efficiency up to 75%, quick install, plug-n-play instant operate, portable, durable temporary lighting.

## KEY FEATURE

- 360° Omni-directional lighting.
- Ultra-bright: 120lm/W.
- Come with 5-foot 18AWG cord and 120V plug.
- Built-in socket, can be linked one by one.
- Suitable for dry and damp location.
- Portable hook, easy to carry and quick install.
- Ventilation air-flow heat sink design for better heat dissipation.
- High quality led driver to ensure stable working situation.
- Waterproof rubber design for better waterproof performance.
- Operating temperature: -40°C/-40°F to 60°C/140°F.



## SPECIFICATION

Item NO.	Watt	Total Lumens	Dimension	CCT	Input Voltage	CRI	Power Factor	Operating Temperature	Beam Aangle
RMS-H5-9-60W	60W	7200LM	Ø130*H223mm	3000K~6500K	AC100-277V, 50-60Hz	>80	>0.9	-40°C to 60°C	360°
RMS-H5-9-100W	100W	12000LM	Ø132*H273mm						
RMS-H5-9-150W	150W	18000LM	Ø132*H323mm						

### Test Data of Maximum Linkable Quantity

Working Condition: Input voltage is AC100-277V, each led temporary work light comes with 10ft 18/3 cord.

Connection Way:	Model Number:	60W, same power	100W, same power	150W, same power
The maximum quantity for fixture's plug to link another fixture's socket, without power cord		10 pieces	6 pieces	4 pieces

## APPLICATION

- \* New Building Construction or Renovation.
- \* Maintenance or storage spaces in commercial or institutional facilities.
- \* Short-term maintenance projects.
- \* Warehouses, factories, Exhibition halls and workshops.
- \* Highway toll stations and gas stations.

