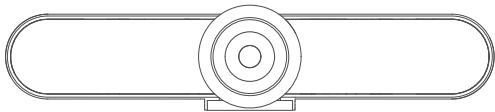


视频会议终端

Video Conference Equipment



用户手册

User Manual

包装清单

What's in the box



视频会议终端 X 1
Video Conference Equipment X 1



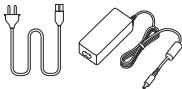
遥控器 X 1
Remote Control X 1



HDMI线 X 1
HDMI Cable X 1



合格证 X 1
Qualification Certificate X 1



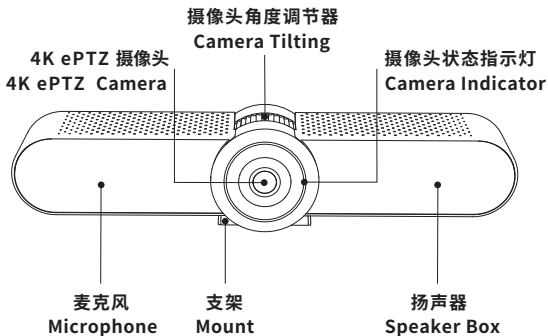
电源适配器 X 1
AC Adapter X 1



用户手册 X 1
Quick Installation Guide X 1

产品概览

Overview



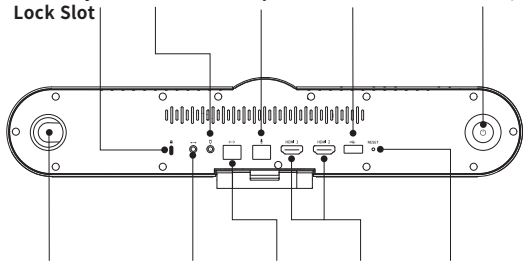
防盗锁孔
Security
Lock Slot

电源
Power Port

拓展麦克风
Microphone

USB

电源键
Power On/Off



音频倒相孔
Phase Invertor Tub

音频输入
Line-in
音频输出
Line-out

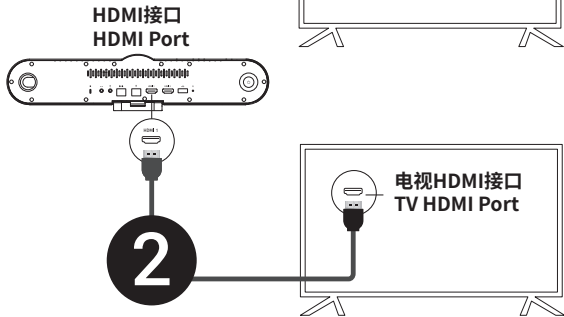
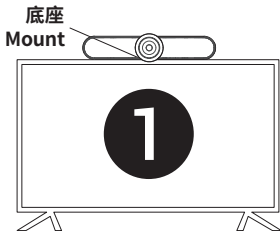
网口
EtherNet

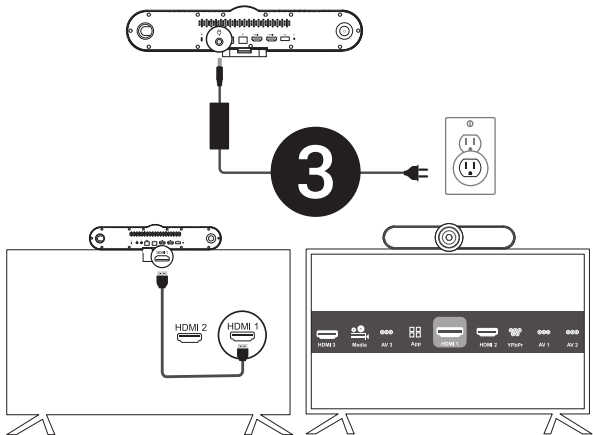
HDMI

复位键
Reset

快速安装指南

Easy Set-Up





将电视机切换到与视频会议终端连接的HDMI接口相对应的HDMI输入信号源, 然后请按照提示操作。

Select "Input Source" on your TV to receive the output of Video Conference Equipment and follow the prompts.