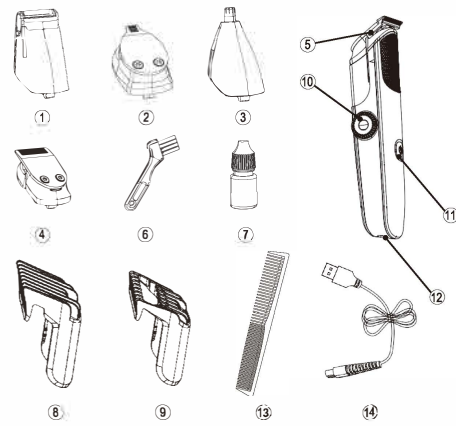




Beard Trimmer

USER MANUAL



DESCRIPTION

- | | |
|---------------------|------------------------|
| 1. Micro shaver | 8. Guide comb (1#) |
| 2. Design trimmer | 9. Guide comb(2#) |
| 3. Nose/Ear trimmer | 10. Adjustable wheel |
| 4. U-blade trimmer | 11. On/off switch |
| 5. T-blade trimmer | 12. Charge interface |
| 6. Clean brush | 13. Comb |
| 7. Lubricating oil | 14. Usb charging cable |

SPECIFICATION

Products: Beard Trimmer
 Model : FK-BT
 Input:100-240V 50/60Hz
 Output: 5V 1000mAh
 Battery type: 800mAh Li-Ion battery
 Charge Method: DC
 Charging Time: 2H
 Usage Time: 90min
 IP Rating:IPX7
 Comb Setting: 1~20mm
 Motor Level: 6000RPM

Our products are designed to meet the highest standards of quality, functionality, and design. We hope you enjoy using your new appliance. Please read the instructions carefully and keep them in a safe place for future reference.

DANGER

To reduce the risk of electric shock:

- The blades are washable under a running tap.
- Please note the main body of the trimmer is not washable and should be kept away from water.
- Always unplug the appliance from the electrical outlet immediately after using or charging, except when charging.
- Unplug the appliance before cleaning.

WARNING

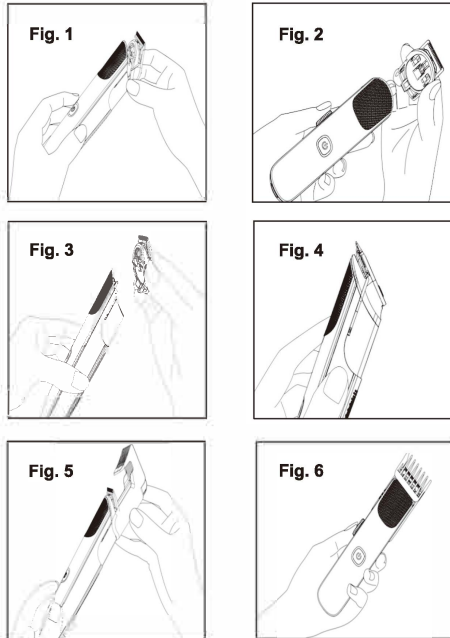
To reduce the risk of burns, fire, electric shock, or injury to persons:

- Close supervision is necessary when the appliance is used by, on, or near children or individuals with disabilities.
- Use the appliance only for its intended purpose, as described in this manual. Do not use attachments that are not recommended by the manufacturer.
- Never drop or insert any object into any opening on the appliance.
- Charge the clipper before the first use or if it hasn't been used for a while to avoid self-discharge. If the inner blade isn't moving, charge the clipper as it may need power.
- Do not charge the clipper where the room temperature is below 0°C or above 40°C, as this may lower the rate of charge and affect the battery's lifespan.
- Do not place or charge the clipper near a heat source or in direct sunlight.
- Do not use the clipper while it is charging to avoid overheating.
- Take extra care when using the clipper without the comb guide to avoid skin damage. If the comb guide becomes damaged or broken, stop using the clipper immediately and replace it. Continued use could result in cuts or scratches to the skin.
- WARNING: Keep the appliance dry.
- Children 8 years and older, as well as individuals with limitations or lack of experience, may use this appliance with proper instruction and supervision. It's important to understand the potential dangers and avoid playtime. Cleaning and maintenance should always be supervised for children.
- This appliance can be used by children aged 3 years and above with adult supervision.

1

2

3



4

HOW TO ASSEMBLE THE APPLIANCE

- Remove the head part by pulling it out (see Fig. 1-2).
- To change parts, position the new part correctly with your fingers and align the head part with the body lock before pressing them together (see Fig. 3-4).
- Attach the positioning comb by inserting it from the front to the back until it locks with the head part. Two positioning combs are included, length 1-10&10-20mm (see Fig. 5-6).

GETTING STARTED

CHARGING YOUR PERSONAL GROOMER

Before using your personal groomer for the first time, please charge it for 8 hours.
 » To begin, make sure the product is switched off. Then, connect the charging adapter to the product and plug it into a power outlet. The charging indicator light will turn on to show that the device is charging.
 » Your personal groomer cannot be overcharged. However, if the product will not be used for an extended period of time (2-3 months), it is recommended that you unplug it from the mains and store it. When you are ready to use it again, fully recharge your personal groomer.*

5

HOW TO USE

Turning on / off
 Press the On / Off button to turn On / Off the trimmer.

Trimming length setting

Turn off the trimmer and turn the knob to adjust the trimming comb to the desired length.



Trimming

After adjusting the trimming comb to the desired length, turn on the trimmer, and gently move the blade end through your beard in slow, stroking motions.

Note: You can shave off your beard entirely by not attaching a comb. However, care should be taken to avoid scratching your skin.

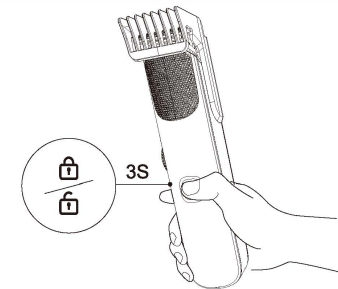
6

Travel lock

This trimmer is equipped with a travel lock to prevent it from accidentally turning on while being transported.

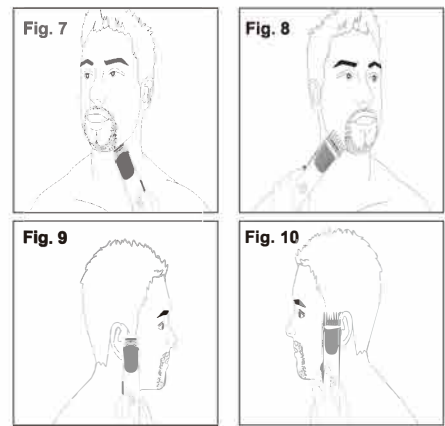
To enable the travel lock: Press and hold the On / Off button for three seconds while the trimmer is turned off until the indicator lights blink three times. This prevents the trimmer from turning on when the button is pressed accidentally.

To disable the travel lock: Press and hold the On / Off button for three seconds until the trimmer is turned on. Press again to turn it off.

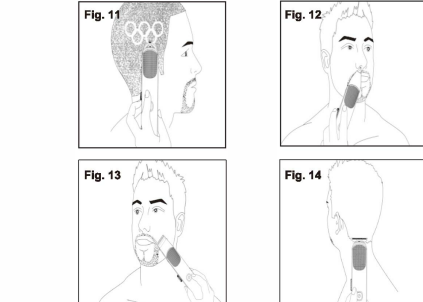


Note: When pressing the On / Off button while the trimmer is locked, the indicator lights will blink three times, but the trimmer will not turn on.

7



8



USING THE DESIGN TRIMMER (Fig. 11):

- Attach the design trimmer attachment.
- Determine the shape you want and remove the excess hair accordingly.

TO REMOVE HAIR FROM NOSE AND EAR (Fig. 12):

- Attach the nose trimmer attachment.
- Gently insert the personal groomer into your nostril or ear.
- Move the groomer in and out while rotating it.
- Do not insert the cutting unit more than 6mm into your nostril or ear.

USING THE MICRO SHAVER TRIMMER (Fig. 13):

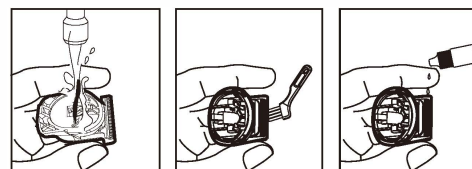
- Attach the micro shaver trimmer.
- Hold the groomer so the micro shaver gently touches your face at a 45-degree angle.
- Use short, controlled movements to shave the detail areas around your beard/moustache.
- Use your free hand to stretch your skin to encourage the hair to stand upright, making it easier to shave.
- Note that the micro shaver is designed for detail work and not for shaving your entire face. For a close and comfortable shave, use an electric shaver.

9

Cleaning & Maintenance

To ensure optimal functionality, clean the trimmer after each use. The trimmer may be rinsed with water.

- Before cleaning the trimmer, make sure it is turned off and not being charged.
- Remove the trimming comb and blade head and use the provided cleaning brush to clean out the blade head slot and blade teeth.
- The trimming comb, blade head, trimmer, and trimming comb slot can be rinsed with water. All components should be dried immediately after rinsing.
- Water on or near the charging port should be dried before storing the device.
- After drying, it is recommended to add lubricating oil to maintain smooth operation before reattaching the blade head to the trimmer.
- It's normal for the blade to get warmer during use. Add the included blade oil onto the five points illustrated below, to keep the blade running normally.



Notes:

The trimmer's service life depends on the frequency of use and whether it is properly maintained.
 Do not use compressed gas, steel wool, abrasive cleaning agents, corrosive liquids (such as gasoline or acetone) and sharp objects to clean this trimmer.

10

TIPS FOR BEST RESULTS

- Make sure that your beard, mustache, and sideburn hairs are dry before using the personal groomer.
- Avoid using lotions before using the personal groomer.
- Comb your hair in the direction that it grows.
- Remove the trimmer comb attachment if you are defining hairline edges, trimming the nape of your neck, or trimming your beard line on the front of your neck.

CARE FOR YOUR PERSONAL GROOMER: CLEANING AND MAINTAINING YOUR PERSONAL GROOMER: AFTER EACH USE

- Turn off the personal groomer.
- Gently brush or rinse away the remaining hairs from the guide comb and trimmer blade under warm water.

STORAGE

- Always store the appliance and cord in a moisture-free area.
- Do not store the personal groomer in temperatures exceeding 140°F (60°C).
- Do not wrap the cord of the charging adaptor around the appliance.

11

PROTECT THE ENVIRONMENT

Do not dispose the trimmer in household waste at the end of its useful life.

Disposal can take place at our service centers or appropriate collection sites.

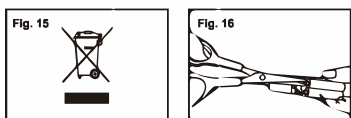
Caution: do not put in fire or mutilate your battery packs they may burst or release toxic material.

Do not throw away the appliance with the normal household waste at the end of its life, but hand it in at an official collection point for recycling. By doing this, you help to preserve the environment (fig.15)

BATTERY REMOVAL

Lift the battery out of the housing by using a scissor cut down the connection between the body and the power line. Twist the connecting wires until they break (fig.16)
 The battery must be removed from the appliance before it is scrapped. The battery is to be disposed of safely.

- Unplug groomer from outlet to avoid risk of electrical shock.
- With wire cutters, clip the wires leading to the batteries.
- Remove rear groomer cover by first prying the rubber panel from the product with a flat head screwdriver. Pry the on/off switch from the product by head screwdriver. Unscrew the upper housing by head screwdriver and pry the upper housing from the product with a flat head screwdriver. This will expose the batteries.
- Remove the batteries from the product. Contact your local authorities for proper disposal.



12

Warranty Card

Product Name	Professional Hair Clipper	Warranty Period
Product Model		One year from the purchasing date
Purchasing Date	Month Date Year	To Month Date Year

Customer	Address	Name
		Phone Number
Point of Sale	Address	Name
		Phone Number

Following Guarantees Provided For The Product

- The product is produced through strict quality management and inspection.
- If malfunction occurred in fair use, the consumer can enjoy free warranty service according to the warranty card in the purchasing store or our repair center. (The battery and blade belong to consumables, not covered by warranty but provided with fee)
- No free services for the following situations:
 A. Damages caused by repair or reformation not approved by our company.
 B. Damages caused by false or neglectful use, or by accidents.
 C. Damages caused by natural disasters or abnormal voltage.
 D. Damages caused by ignoring attentions provided with in the product specification.
- The product is only guaranteed when provided the warranty card instead of the invoice.

13



24h Customer Support
 Email:support@fade-king.com