

DR.TRAINER

Thank you for purchasing the Dr.Trainer smart bark collar. We have made every attempt to provide you with the most technologically advanced product, using the most stringent quality and manufacturing standards. We are confident you will be pleased with the results you'll attain with your Dr.Trainer. Good luck with your training, and please feel free to contact us, should you have any questions.

971-302-6642 or Service@DrTrainer.com

Important Safety Information

Not for use with aggressive dogs. Do not use this product if your dog is aggressive, or if your dog is prone to aggressive behavior. Aggressive dogs can cause severe injury and even death to their owner and others. If you are unsure whether this product is appropriate for your dog, please consult your veterinarian or certified trainer.

Safety during on-leash training. It is vitally important that you and your dog remain safe while learning during on-leash training. Your dog should be on a strong leash, long enough for him to attempt to chase an object, but short enough for him not to reach a road or other unsafe area. You must also be physically strong enough to restrain your dog when he tries to chase something.

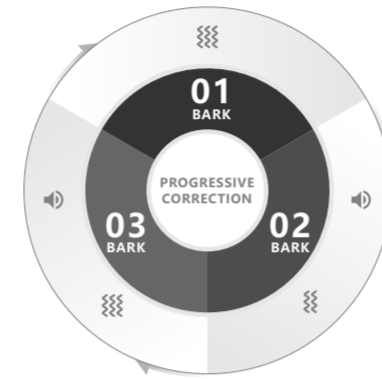
Risk of skin damage. Please read and follow the instructions in this manual. The proper fit of the collar is important. A collar worn for too long or fastened too tightly on your pet's neck may cause skin damage, ranging from redness to pressure ulcers. This condition is commonly known as bed sores.

- Avoid leaving the collar on the dog for more than 12 hours per day.
- When possible, reposition the collar on the pet's neck every 1 to 2 hours.
- Check the fit to prevent excessive pressure; follow the instructions in this manual.
- Never connect a lead to the electronic collar; When using a separate collar for a lead, don't put pressure on the electronic collar.
- If a rash or sore is found, discontinue use of the collar until the skin has healed.
- If the condition persists beyond 48 hours, see your veterinarian.

How does the Dr.Trainer Smart Bark Collar work?

Now, you can experience the difference a Dr.Trainer can make. Spend less time training and more time enjoying your dog.

1. The Dr.Trainer smart bark collar has a progressive correction system. If your dog continues to bark, the correction system automatically increases to the next level until he stops. He will quickly realize that barking is not a good thing within the first few days of wearing the collar.



2. The Dr.Trainer smart bark collar can also customize the correction settings with the App. You can choose the combination of functions and intensity levels that suits your dog. When the dog is barking, the smart bark collar will use your correction setting to remind it not to.

Specifications and Performance

Product name: Smart Bark Collar

Mode: B1 & B1 Pro

Battery type: Li-Polymer

Battery capacity: 500mAh

Input interface: Micro-USB

Input parameters: 5V/1A Max.

Bluetooth: BLE4.0

Vibration: 3 Levels

Charging time: About 40 minutes (with 5V/1A charger)

Battery Life/Working time: About 2 weeks

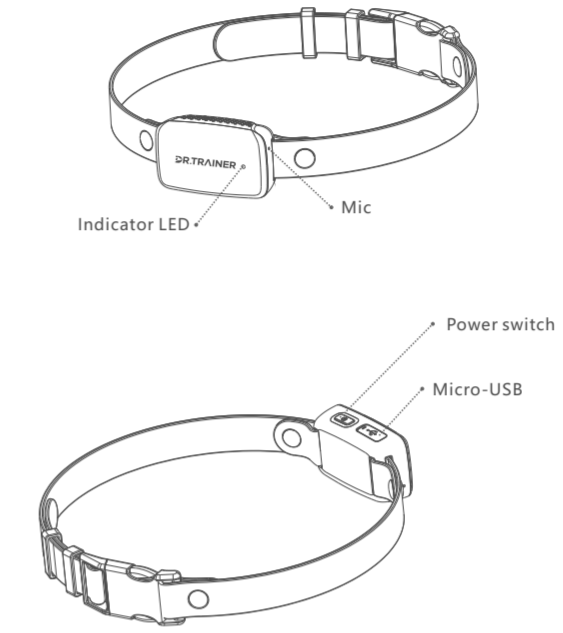
Material: PC+ABS

Ingress protection: IPX7

Packing list:

- 1 x Device
- 1 x Adjustable Nylon Collar
- 1 x USB Charging Cable
- 1 x User Manual
- 1 x Quick Start Guide

Diagram



Key Definition

Function	Action	Indication
Power on	In shutdown state, press and hold the power switch for 1 second	Blue light stays on 3 seconds, with short vibration
Power off	In operating state, press and hold the power switch for 2 seconds	Lights off, with long vibration for 1 second.
Bluetooth pairing mode	Double-click the power button (within 1.5 seconds)	Alternately flashes blue and green lights for about 90 seconds
Factory reset	press the power button for more than 15s	The device vibrates when you keep pressing over 2 seconds, continue pressing for 15 consecutive seconds, then it will be recovered.

LED Indication

operating state	1. When Bluetooth is not connected to mobile phone, the Green LED flashes. 2. When Bluetooth is connected to mobile phone, the Blue LED flashes.
Pairing state	Green and blue lights flash alternately
Charging	Green light slowly flashes
Fully charged	Green light keeps on
Low battery	Red light quickly flashes when battery capacity is less than 15%

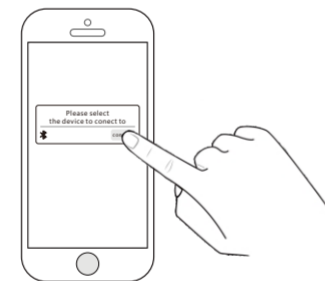
Operating Guide

STEP 1: Pair the Smart Bark Collar with your phone.

- 1) Open Bluetooth and the APP on your phone, and follow the instructions.
- 2) Please turn on the collar first, by pressing the power button for more than 1 second.
- 3) Quickly double-click the power button of the device to enter pairing mode (blue and green lights flash alternately).



- 4) After the device is detected by the App, please confirm the first connection manually.



STEP 2: Fit the Smart Bark Collar

Important: The proper fit and placement of your Bark Collar is important for effective operation.

To ensure a proper fit, please follow these steps:

1. Make sure that the Receiver Collar is turned off.
2. Start with your dog standing comfortably.
3. Place the Bark Collar on your dog's neck, close to the ears.
4. Check the tightness of the Bark Collar by inserting one finger between the collar and your dog's neck. The fit should be snug but not constricting.



FAQ's

Q: How old does a pet have to be before using the Dr.Trainer?

Your pet should be able to learn basic obedience commands such as "Sit" or "Stay." Pets should be at least 6 months old before using the Trainer.

Q: Is the Smart Bark Collar waterproof?

Yes. All of the Dr.Trainer Smart Bark Collars are waterproof.

Q: Can I use the Dr.Trainer on aggressive pets?

We do not recommend any of our products to be used on aggressive pets. We recommend that you contact your local veterinarian or professional trainer to determine if your pet might be aggressive.

Q: Why my pet is not responding when I press a button?

- Check to see if the Collar has been turned on.
- Increase the correction level.

Q: Why won't the Electronic Collar turn on?

Make sure the Electronic Collar has been charged.

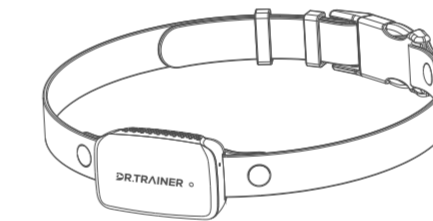
Q: Why does your dog bark, but sometimes there is no trigger correction?

In order to remain humane in your treatment of your dog, the bark collar performs corrective actions only if the barking volume is beyond a certain level. You can also customize the limit value of Loudness with the following steps.
Setting → Trigger condition → Loudness

1. If the barking has exceeded your acceptable range but no corrective action is triggered, you can turn down the Loudness limit value in Settings to increase the sensitivity.

2. If you want to relax the restrictions, allowing your dog to bark at a higher loudness range, you can turn up the Loudness limit value to reduce the sensitivity.

DR.TRAINER



B1 & B1 Pro

印刷颜色:单黑