

Air Purifier

User Manual



True HEPA Filter



3- Stage
Filtration System



Low Noise Level



Child Lock



Model: HQZZ-60

CUSTOMER SERVICE

Our customer service team is standing by to assist you if you have any questions or concerns.



www.tailulu.com



support@tailulu.com



1-833-368-8825

READ AND SAVE THESE INSTRUCTIONS

To Reduce The Risk Of Fire Or Electric Shock, Do Not Use This Fan With Any Solid-State Speed Control Device.

CONTENT

Product introduction	1
Product overview	2
Before using the appliance	3
Control panel and function	4
Operation	5
Maintenance	7
Specifications	8
IMPORTANT	9
Troubleshooting Guide	10

1 PRODUCT INTRODUCTION

Dear users,

Thank you for using our air purifier.

Please read this manual carefully before use and master the usage method correctly.

This product is a small desktop air purifier.

Its unique appearance design can bring you aesthetic experience.

The structure of air inlet on four sides and air outlet on the top enables it better circulate and purify the air.

The compact size makes it placed on the desktop without affecting your work.

This air purifier can absorb, decompose or convert various air pollutants and effectively improve air cleanliness.

It adopts multiple technologies and media so that it can provide you with clean and safe air.

A SMALL "BODY" CAN REALIZE GREAT EFFECTS!

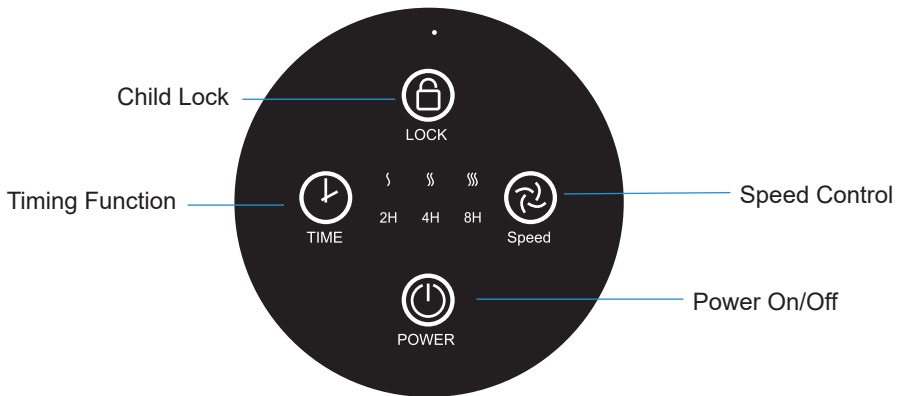
2 PRODUCT OVERVIEW



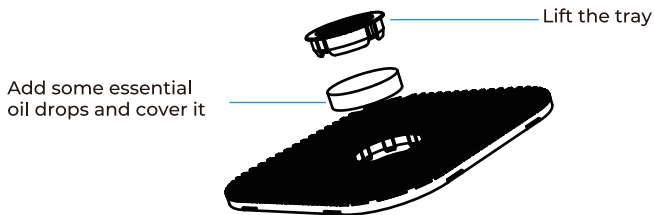
3 BEFORE USING THE APPLIANCE

1. Open the package, take out the air purifier. Rotate the twist handle counterclockwise to unlock the base cover.
2. Take out the power adapter (placed in the middle of the filter).
3. Remove the new filter protective film before installation.
4. Place the filter into the air purifier and put the base cover back (Align the base cover locking notches and rotate it clockwise until it clicks into place.)
5. To better exert the performance of the air purifier, the air inlet of the machine should be kept a certain distance (above 20cm recommended) from the obstruction.
6. Please insert the plug into the power socket firmly.

4 CONTROL PANEL AND FUNCTIONS



ESSENTIAL OIL TRAY



5 OPERATION

1. "POWER" ON/OFF

Press the "POWER" button to switch on the purifier, then you will find the filtration runs in speed 2 automatically. Press the "POWER" button again to switch off the purifier.

2. Child lock function:

Pressing the "LOCK" key will enable the child lock function and it will disable the other keys. To re-enable the other keys, press and hold the "LOCK" key for 5 seconds.

3. Speed:

Press the "Speed" button to adjust the speed level (⏏, ⏏, ⏏) and choose the most comfortable one for you. Please note the noise will increase when the speed level is increased.

4. Timer function:

Press the "Timer" button to pick the required operating time (2, 4, 8 hours). Air purifier shuts off automatically at the end of the selected period.

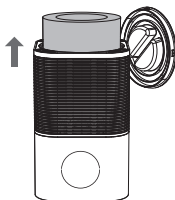
6 HOW TO REMOVE THE PROTECTIVE BAG

1



Rotate the twist handle clockwise to unlock the base cover.

2



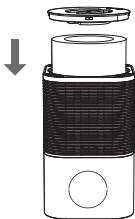
Flip the air purifier over and remove the filter.

3



Take out the power adapter and remove the filter protective bag before installation.

4



Place the filter into the air purifier and install the base cover properly. Tighten the filter buckle until it clicks into place.

7 Maintenance

 **Be sure to unplug the power adapter before any maintenance!**

1.Recommended daily cleaning and maintenance frequency of the filter: about once a month. The surface of the filter can only be cleaned with a brush or dry cotton cloth. Do not clean the filter with water or detergent. The filter is easy to be damaged and deformed. Do not pull and press it with force during cleaning. Replace the filter with a new one in case of damage.

2.Recommended replacement frequency of the filter: about once every 3-6 months depending on the place and the usage method. For example, the filter replacement cycle may be shortened in case of heavily polluted areas, smoking of family members, etc. Please replace the filter in time if the filtering effect is not good.

3.Surface cleaning: Wipe the outer surface and the air inlet and outlet with a wrung soft cloth. Do not clean the surface with chemical cleaners.

4.Long-time idling: Unplug the power adapter and clean the outer surface and, the filter. Put the purifier in a plastic bag and store it in a place with less moisture.

8 SPECIFICATIONS

Product name:	Air purifier
Product dimension:	162x162x255 mm
Package dimension:	185x185x280 mm
Net weight:	1.03KG
Gross weight:	1.26KG
Model:	HQZZ-60
Operation	Touch keys
Input voltage of the adapter:	100-240V AC 50/60 Hz
Operating voltage	12V DC
Rated power:	5W

9 IMPORTANT

Do not clean or sprinkle the product with liquid.

1. There is a high-speed wind wheel rotating in the purifier, so do not put your hands or foreign matters into the air inlet and outlet.

2. Keep the purifier away from the children and do not let them play with this product.

3. Keep hair, fabric, etc. away from the machine to avoid being caught in or blocking the air inlet and outlet.

4. Close the doors and windows to improve the purification effect when using the product. (Please ventilate when using the purifier with a combustion device to avoid carbon monoxide poisoning.)

5. Please only use the power adapter that came with the device.

6. Do not use the device in wet or moist areas such as bathrooms, steamy kitchens or near swimming pool otherwise it may cause electric shock.

10 TROUBLESHOOTING GUIDE

Faults	Cause and solutions
The air purifier produces a strange smell.	<ul style="list-style-type: none">● The filter is too dirty and has not been replaced for a long time-replace the filter.● The water has entered the filter or the machine has been used in a humid environment. Please replace the filter.● Reuse after sealed for a period of time-clean the filter, if it cannot be solved replace the filter.● If there is a burning smell-stop using it immediately, unplug the power supply and contact customer support team.
No wind at the air outlet	<p>The motor is not running. Check the power supply, replace the power adapter or contact the customer support team.</p>
Can't feel the effect	<ul style="list-style-type: none">● Filter failure - Replace the filter.● Used in inappropriate places (excessive area)