



K600

Instruction Manual
Manuel d'instructions
Manual de instrucciones

Model/Modèle/Modelo:K602G



Contents

| | |
|---|----|
| 1. Important Safety Instructions | 4 |
| 2. Package Contents | 9 |
| 3. Operating and Programming..... | 12 |
| 4. Maintenance | 17 |
| 5. Indicator Light and Alarm Sounds | 21 |
| 6. Troubleshooting..... | 23 |
| 7. Technical Specifications | 24 |

1. Important Safety Instructions

Household use only

IMPORTANT SAFETY INSTRUCTIONS

When using an electrical appliance, basic precautions should always be followed, including the following:

READ ALL INSTRUCTIONS BEFORE USING THIS APPLIANCE.

WARNING: Read all safety warnings and instructions. Failure to follow the warnings and instructions may result in electric shock, fire or serious injury.

1. Do not allow to be used as a toy. Close attention is necessary when used by or near children.
2. Clear the area to be cleaned. Remove power cords and small objects from the floor that could entangle the Appliance. Tuck rug fringe under the rug base, and lift items such as curtains and tablecloths off the floor.
3. If there is a drop off in the cleaning area due to a step or stairs, you should operate the

Appliance to ensure that it can detect the step without falling over the edge. It may become necessary to place a physical barrier at the edge to keep the unit from falling. Make sure the physical barrier is not a trip hazard.

4. Only use as described in this manual. Only use attachments recommended or sold by the manufacturer.
5. Please make sure your power supply voltage matches the power voltage marked on the Charging Dock.
6. For INDOOR use ONLY. Do not use the Appliance in outdoor, commercial or industrial environments.
7. Non-rechargeable batteries are prohibited.
8. Do not use without dust bin and/or filters in place.
9. Do not operate the Appliance in an area where there are lit candles or fragile objects on the floor to be cleaned.
10. Do not use and store in extremely hot or cold environments (below -5°C/23°F or above 40°C/104°F). Please charge the robot in temperature above 0°C/32°F and below

1. Important Safety Instructions

40°C/104°F.

11. Keep hair, loose clothing, fingers, and all parts of body away from any openings and moving parts.
12. Do not operate the Appliance in a room where an infant or child is sleeping.
13. Do not use Appliance on wet surfaces or surfaces with standing water.
14. Do not allow the Appliance to pick up large objects like stones, large pieces of paper or any item that may clog the Appliance.
15. Do not use Appliance to pick up flammable or combustible materials such as gasoline, printer or copier toner, or use in areas where they may be present.
16. Do not use Appliance to pick up anything that is burning or smoking, such as cigarettes, matches, hot ashes, or anything that could cause a fire.
17. Do not put objects into the suction intake. Do not use if the suction intake is blocked. Keep the intake clear of dust, lint, hair, or anything that may reduce air flow.
18. Take care not to damage the power cord. Do not pull on or carry the Appliance or Charging

Dock by the power cord, use the power cord as a handle, close a door on the power cord, or pull power cord around sharp edges or corners. Do not run Appliance over the power cord. Keep power cord away from hot surfaces. Do not unplug by pulling on cord. To unplug, grasp the plug, not the cord.

19. If the power cord is damaged, it must be replaced by the manufacturer or its service agent in order to avoid a hazard.
20. Do not use the Charging Dock if it is damaged.
21. Do not use with a damaged power cord or receptacle. Do not use the Appliance or Charging Dock if it is not working properly, has been dropped, damaged, left outdoors, or come in contact with water. It must be repaired by the manufacturer or its service agent in order to avoid a hazard.
22. Turn OFF the power switch before cleaning or maintaining the Appliance.
23. The plug must be removed from the receptacle before cleaning or maintaining the Charging Dock.
24. Remove the Appliance from the Charging Dock,

1. Important Safety Instructions

and turn OFF the power switch to the Appliance before removing the battery for disposal of the Appliance.

25. The battery must be removed and discarded according to local laws and regulations before disposal of the Appliance.
26. Please dispose of used batteries according to local laws and regulations.
27. Do not incinerate the Appliance even if it is severely damaged. The batteries can explode in a fire.
28. When not using the Charging Dock for a long period of time, please unplug it.
29. The Appliance must be used in accordance with the directions in this Instruction Manual. REECOO cannot be held liable or responsible for any damages or injuries caused by improper use.
30. the robot contains batteries that are only replaceable by skilled persons. To replace or remove the battery, please contact Customer Service.
31. If the robot will not be used for a long time, fully charge the robot and power OFF for storage and unplug the Charging Dock.
32. Prevent unintentional starting. Ensure the switch is in the off position before connecting to battery pack, picking up or carrying the appliance. Carrying the appliance with your finger on the switch or energizing appliance that have the switch on invites accidents.
33. When battery pack is not in use, keep it away from other metal objects, like paper clips, coins, keys, nails, screws or other small metal objects that can make a connection from one terminal to another. Shorting the battery terminals together may cause burns or a fire.
34. Under abusive conditions, liquid may be ejected from the battery; avoid contact. If contact accidentally occurs, flush with water. If liquid contacts eyes, additionally seek medical help. Liquid ejected from the battery may cause irritation or burns.
35. Do not use a battery pack or appliance that is damaged or modified. Damaged or modified batteries may exhibit unpredictable behavior resulting in fire, explosion or risk of injury.
36. Do not expose a battery pack or appliance to fire or excessive temperature. Exposure to

1. Important Safety Instructions

fire or temperature above 130°C may cause explosion. The temperature of 130°C can be replaced by the temperature of 265°F.

37. Follow all charging instructions and do not charge the battery pack or appliance outside of the temperature range specified in the instructions. Charging improperly or at temperatures outside of the specified range may damage the battery and increase the risk of fire.
38. Have servicing performed by a qualified repair person using only identical replacement parts. This will ensure that the safety of the product is maintained.
39. Do not modify or attempt to repair the appliance or the battery pack (as applicable) except as indicated in the instructions for use and care.
40. Place the cords from other appliances out of the area to be cleaned.
41. Do not operate the vacuum in a room that has lit candles on furniture that the vacuum may accidentally hit or bump into.
42. Do not allow children to sit on the vacuum.

43. Recharge only with the charger specified by the manufacturer. A charger that is suitable for one type of battery pack may create a risk of fire when used with another battery pack.
44. Use appliances only with specifically designated battery packs. Use of any other battery packs may create a risk of injury and fire.
45. Do not handle plug or appliance with wet hands.

SAVE THESE INSTRUCTIONS

1. Important Safety Instructions

This device complies with Part 15 of the FCC Rules / Industry Canada licence-exempt RSS standard(s). Operation is subject to the following two conditions: (1) this device may not cause harmful interference, and (2) this device must accept any interference received, including interference that may cause undesired operation.

Changes or modifications not expressly approved by the party responsible for compliance could void the user's authority to operate the equipment.

NOTE: This equipment has been tested and found to comply with the limits for a Class B digital device, pursuant to part 15 of the FCC Rules. These limits are designed to provide reasonable protection against harmful interference in a residential installation. This equipment generates uses and can radiate radio frequency energy and, if not installed and used in accordance with the instructions, may cause harmful interference to radio communications. However, there is no guarantee that interference will not occur in a particular installation. If this equipment does cause harmful interference to radio or television reception, which can be determined by turning the equipment off and on, the user is encouraged to try to correct the interference by one or more of the following measures:

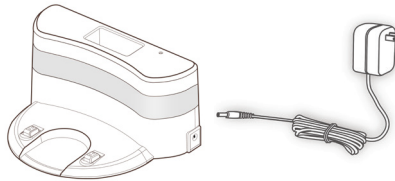
- Reorient or relocate the receiving antenna.
- Increase the separation between the equipment and receiver.
- Connect the equipment into an outlet on a circuit different from that to which the receiver is connected.
- Consult the dealer or an experienced radio/TV technician for help.

2. Package Contents

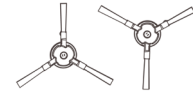
2.1 Package Contents



Robot



Charging Dock + Power Adapter



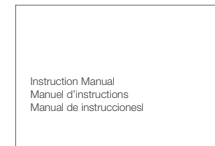
Side Brushes



Remote Control with
Batteries



Multi-Function Cleaning
Tool



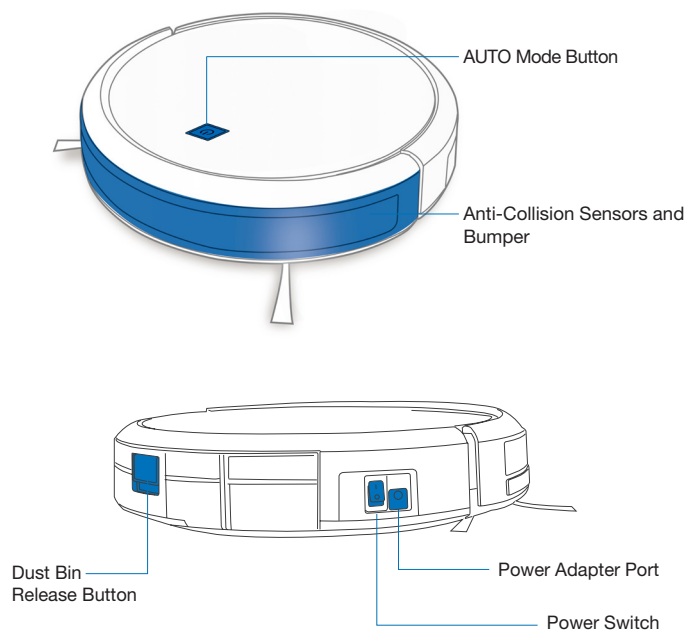
Instruction Manual

Note: Figures and illustrations are for reference only and may differ from actual product appearance. Product design and specifications are subject to changes without notice.

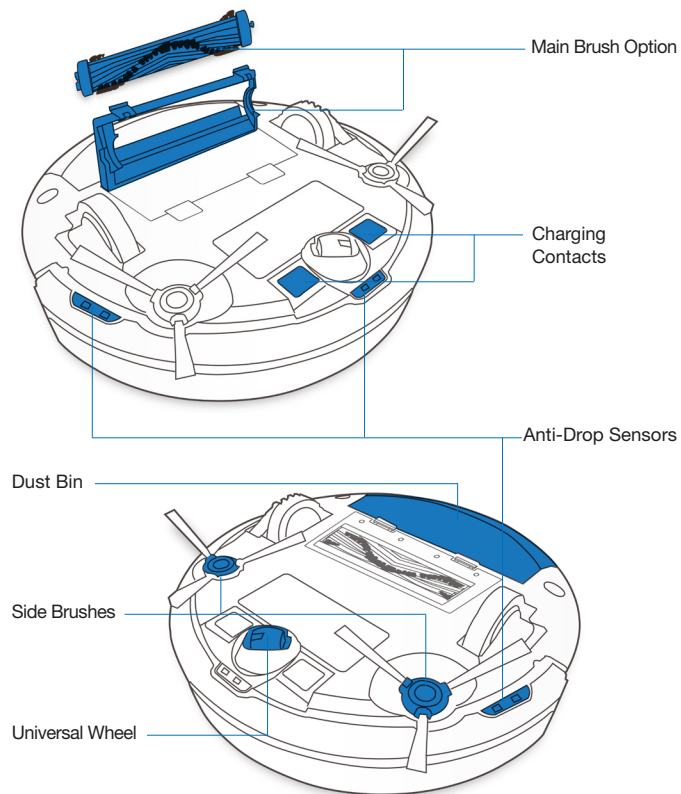
2. Package Contents

2.2 Product Diagram

Robot

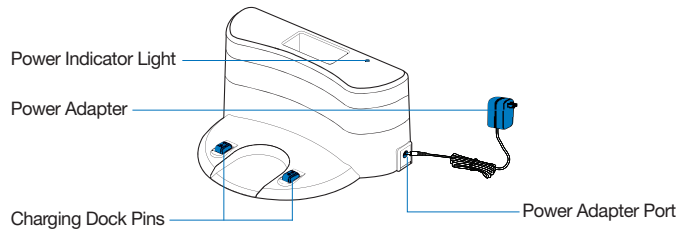


Bottom View

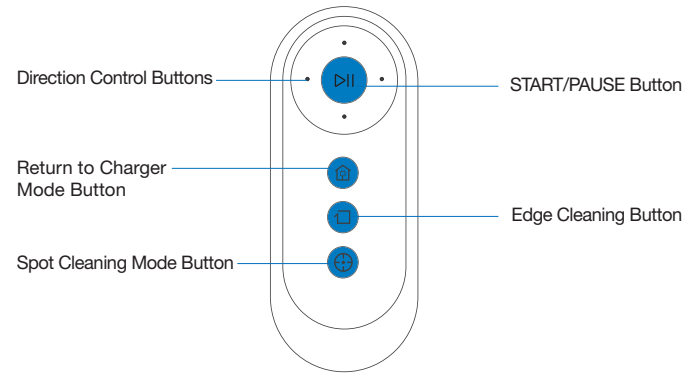


2. Package Contents

Charging Dock



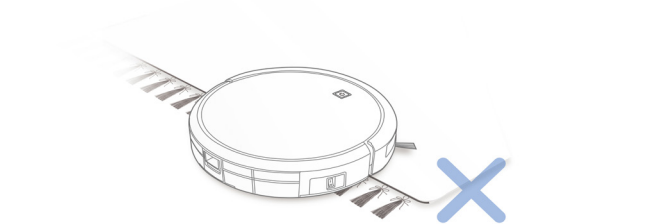
Remote Control



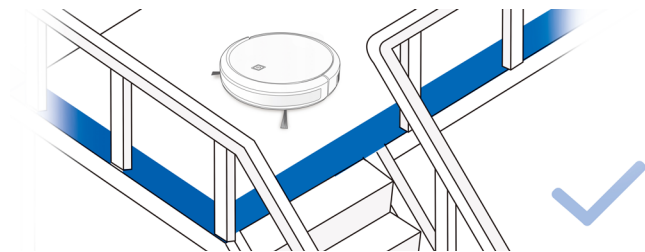
3. Operating and Programming

3.1 Notes Before Cleaning

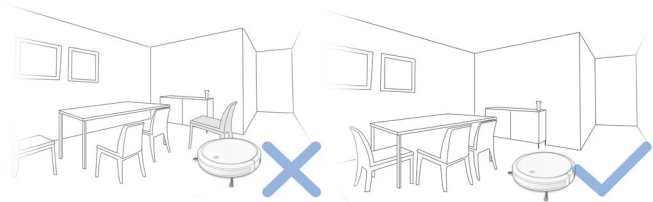
WARNING: Do not use the robot on wet surfaces or surfaces with standing water.



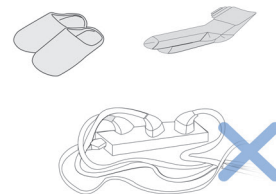
Before using the product on a rug with tasseled edges, please fold the rug edges under.



It may be necessary to place a physical barrier at the edge of a drop to stop the unit from falling over the edge.



Tidy up the area to be cleaned by putting furniture, such as chairs, in their proper place.

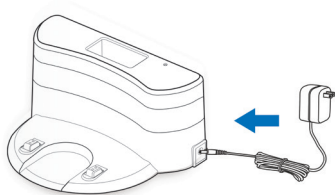


Remove power cords and small objects from the floor that the robot could be obstructed by.

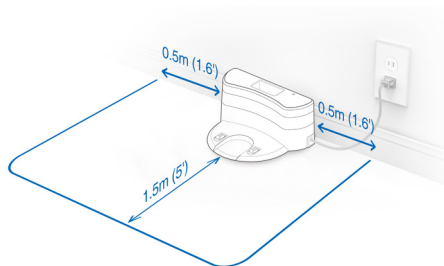
3. Operating and Programming

3.2 Preparation

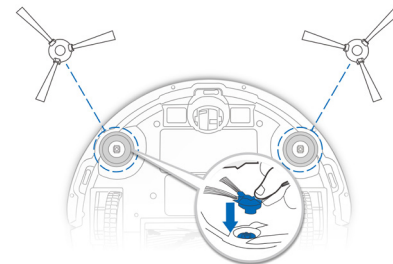
1 Plug in Adapter



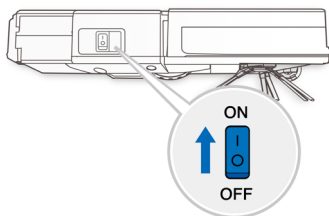
2 Charging Dock Placement



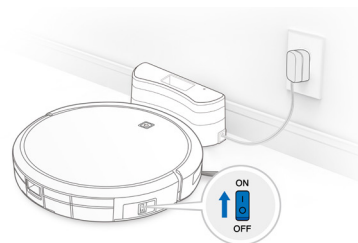
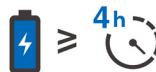
3 Install Side Brushes



4 Power ON



5 Charge the robot



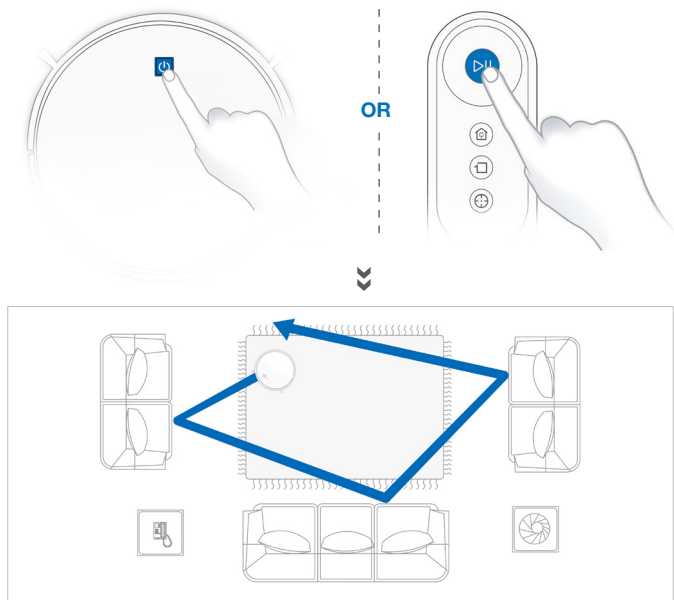
Note: When the robot completes the cleaning cycle or when battery power gets low, the robot automatically returns to the Charging Dock to recharge itself.

3. Operating and Programming

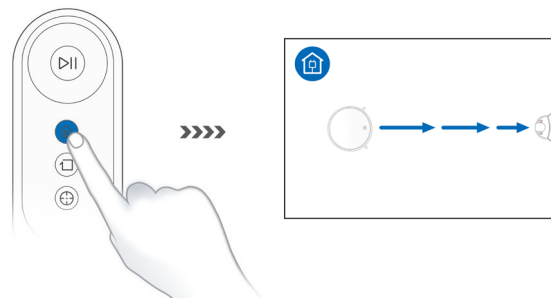
3.3 Selecting Cleaning Mode

1 AUTO Cleaning Mode

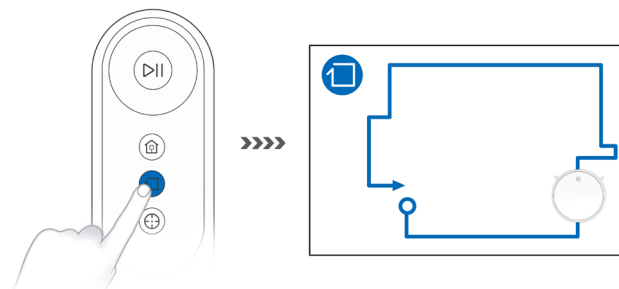
A **Random Cleaning Pattern** (optimized for carpets) will be selected by default.



2 Return to Docking Station

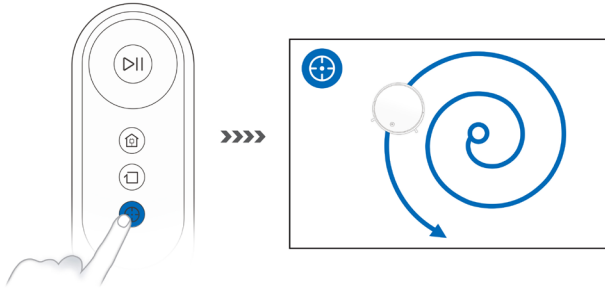


3 Edge Cleaning Mode

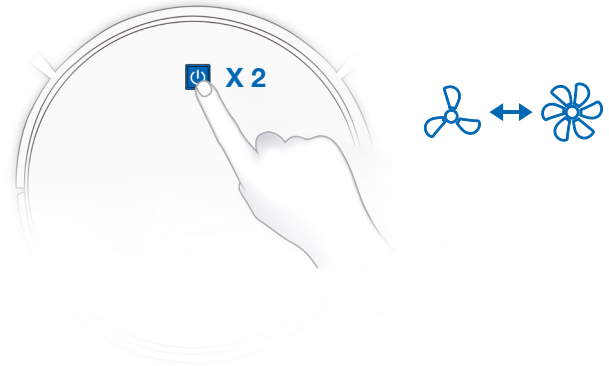


3. Operating and Programming

4 Spot Cleaning Mode



3.4 Switch vacuum power



3. Operating and Programming

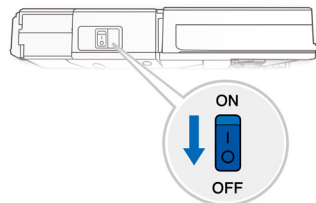
3.5 Pause, Wake Up, Power Off

1 Pause



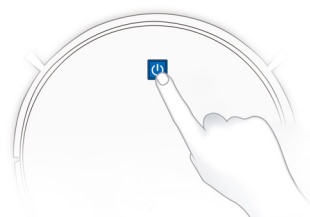
Note: the robot's Control Panel stops glowing after the robot is paused for a few minutes. Press the AUTO Mode Button on the robot to wake up the robot.

3 Power OFF



Note: When the robot is not working, it is recommended to keep it switched ON and charging.

2 Wake Up

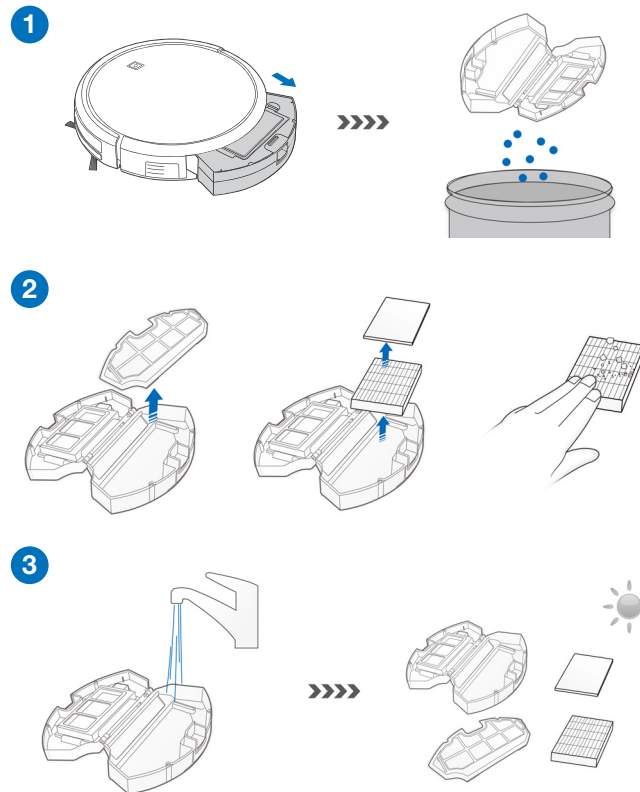
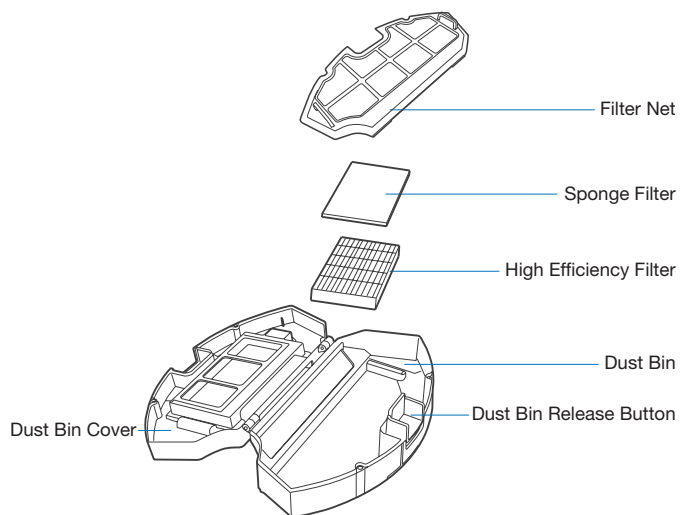


Press the AUTO button on the robot to wake it up



4.1 Dust Bin and Filters

Dust Bin

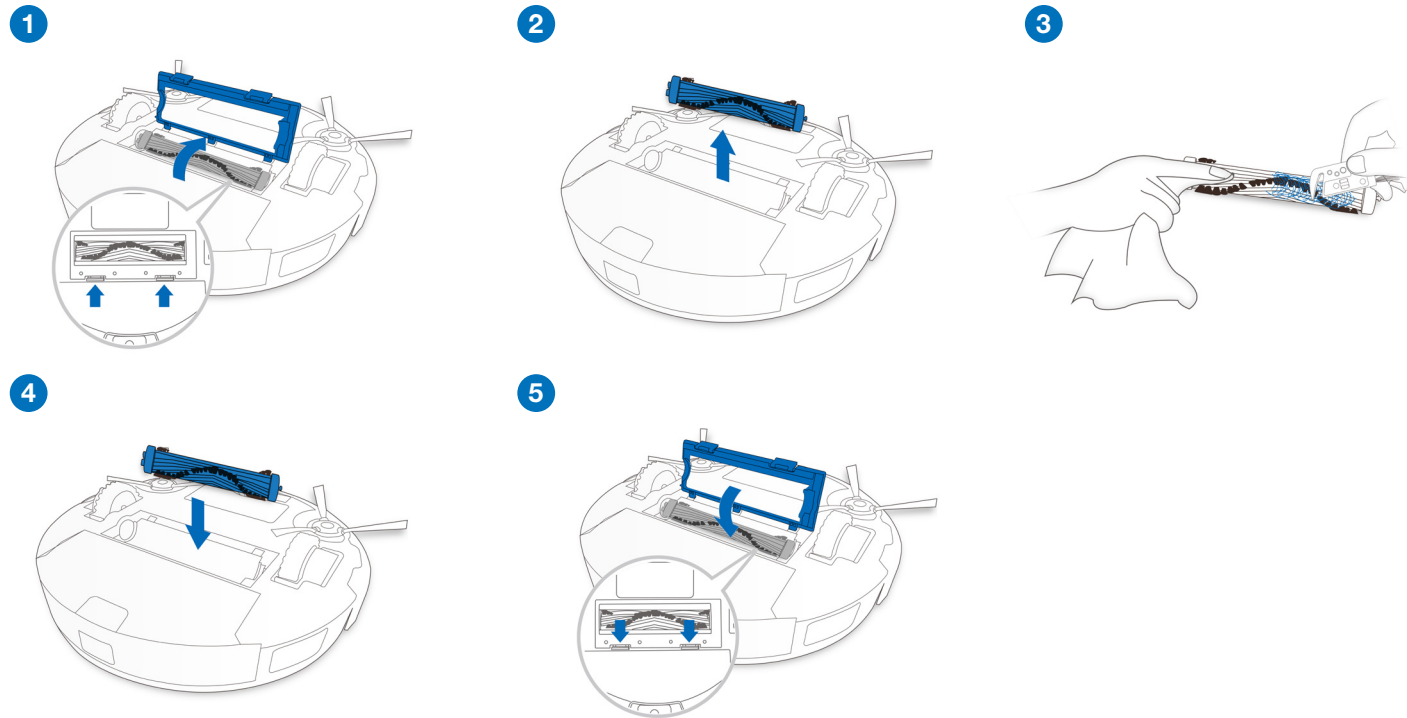


4. Maintenance

4.2 Main Brush and Side Brushes

Note: A Multi-Function Cleaning Tool is provided for easy maintenance. Handle with care, this cleaning tool has sharp edges.

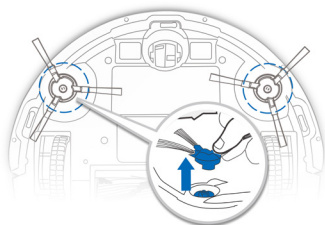
Main Brush



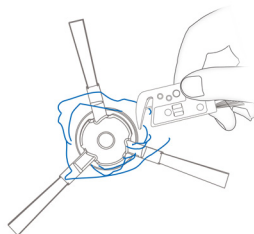
4. Maintenance

Side Brushes

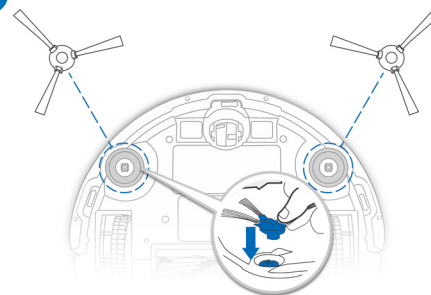
1



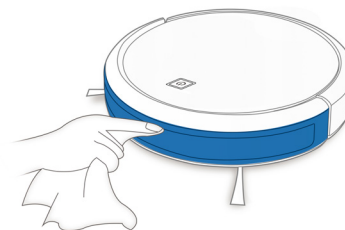
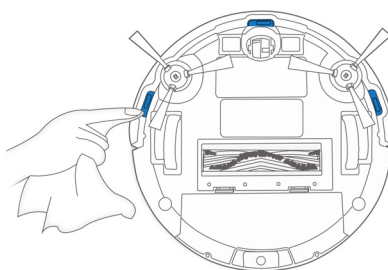
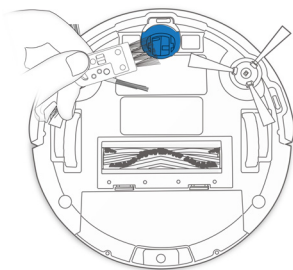
2



3

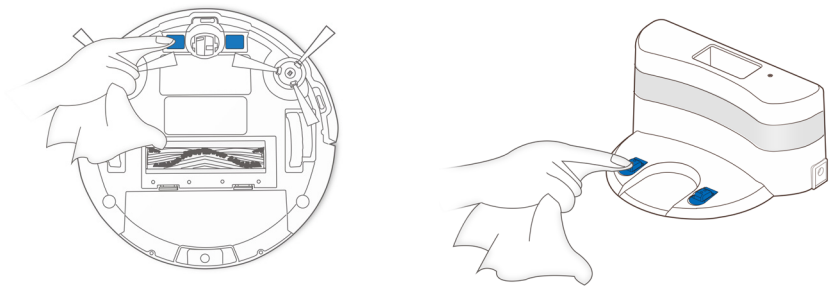


4.3 Other Components



4. Maintenance

Note: Before cleaning the robot's Charging Contacts and Charging Dock Pins, turn the robot OFF and unplug the Charging Dock.



4.4 Regular Maintenance

To keep the robot running at peak performance, perform maintenance tasks and replace parts with the following frequencies:

| Robot Part | Maintenance Frequency | Replacement Frequency |
|---|-----------------------|-----------------------|
| Side Brush | Once every 2 weeks | Every 3-6 months |
| Main Brush | Once per week | Every 6-12 months |
| Sponge Filter/ High Efficiency Filter | Once per week | Every 3-6 months |
| Universal Wheel Anti-Drop Sensors Bumper Charging Contacts Charging Dock Pins | Once per week | / |

A Multi-Function Cleaning Tool is provided for easy maintenance. Handle with care, this cleaning tool has sharp edges.

Note: YEEDI manufactures various replacement parts and fittings. Please contact Customer Service for more information on replacement parts.

5. Indicator Light and Alarm Sounds

Indicator Light

| Status | AUTO Mode Button |
|----------------------------|---------------------------------------|
| The robot is charging. | Flashes BLUE |
| The robot has a problem. | Flashes RED or glows a continuous RED |
| The robot has low battery. | Glowes a continuous RED |
| The robot is cleaning. | Glowes a continuous BLUE |

Alarm Sounds

If the robot detects a problem, it emits alarm beeps and the AUTO Mode Button flashes RED or glows RED.

Flashing RED:

| Alarm Sound | Problems | Solution |
|-------------|-----------------------------------|---|
| Two Beeps | Anti-Collision Bumper Malfunction | Check the Anti-Collision Bumper for debris and remove the debris. |
| Three Beeps | Anti-Drop Sensors Malfunction | Clean Anti-Drop Sensors as described in section 4 Maintenance. |
| Four Beeps | Low Battery | Manually place the robot on the Charging Dock to charge. |

5. Indicator Light and Alarm Sounds

Glowing a continuous RED:

| Alarm Sound | Problems | Solution |
|-------------|---------------------------|---|
| One Beep | Driving Wheel malfunction | Check Driving Wheel for tangled hair or debris and clean as described in section 4 Maintenance. |
| Two Beeps | Side Brush malfunction | Check Side Brushes for tangled hair or debris and clean as described in section 4 Maintenance. |
| Four Beeps | Main Brush malfunction | Check Main Brush for tangled hair or debris and clean as described in section 4 Maintenance. |

6. Troubleshooting

| No. | Malfunction | Possible Causes | Solutions |
|-----|---|--|--|
| 1 | The robot is not charging. | The robot is not switched ON. | Switch ON the robot. |
| | | The robot has not connected to the Charging Dock. | Be sure that the robot's Charging Contacts have connected to the Charging Dock Pins. |
| | | The battery is completely discharged. | Re-activate the battery. Switch ON the robot. Place the robot on the Charging Dock by hand, remove after charging for 3 minutes, repeat 3 times; then charge normally. |
| 2 | The robot cannot return to the Charging Dock. | The Charging Dock is not correctly placed. | Refer to section 3.2 to correctly place the Charging Dock. |
| 3 | The robot gets stuck while working and stops. | The robot is tangled with something on the floor (electrical wires, curtains, carpet fringing, etc.). | The robot will try various ways to free itself. If it is unsuccessful, manually remove the obstacles and restart. |
| 4 | The robot returns to the Charging Dock before it has finished cleaning. | When the battery gets low, the robot automatically switches to Return to Charger Mode and returns to the Charging Dock to recharge itself. | This is normal. No solution necessary. |
| | | Working time varies according to floor surface, room complexity and the Cleaning Mode selected. | This is normal. No solution necessary. |
| 5 | The robot does not clean the whole area. | The cleaning area is not tidy. | Remove small objects from the floor and tidy up the cleaning area before the robot starts cleaning. |

7. Technical Specifications

| | | | |
|----------------------|--------------------------|----------------------|------|
| Model | K602G | | |
| Rated Input | 19V DC 0.6A 11.4W | | |
| Charging Dock | | | |
| Rated Output Voltage | 19V DC | Rated Output Current | 0.6A |
| Power Adapter Model | DK18-190060H-U | | |
| Rated Input | 100-120V AC 50-60Hz 0.5A | | |
| Rated Output | 19V DC 0.6A | | |

Note: Technical and design specifications may be changed for continuous product improvement.

Shenzhen Reecoo Electronic Co., Ltd.

Building 5-6, Shanglilang Technology Park, Longgang District, Shenzhen,
P.R.China