

OPERATION MANUAL

Model : AQ-23001

Registration

Please visit the website below to register your new watch within the first 30 days of purchase. Registration within the first 30 days will activate your one year warranty.

<https://www.aquatrident.com/pages/product-registration>

Please keep your model number, order number and purchase date for future support. You can reach us at +852 21169137, also can send E-mail to Support@time-culture.com.

Model Number _____

Order Number _____

Purchase Date _____

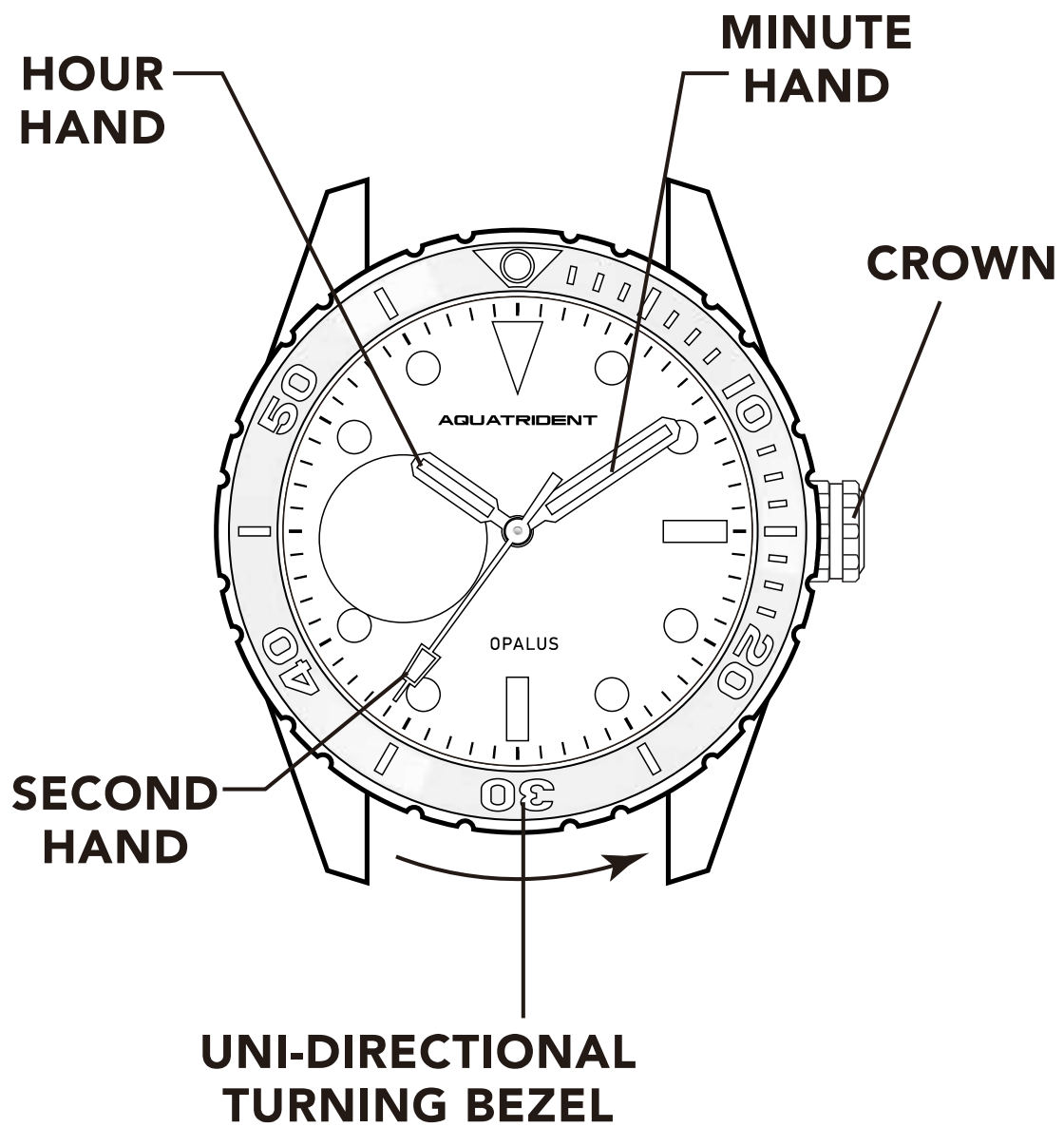


Unpacking

You will get an AQUATRIDENT watch, instruction manual and a plastic warranty Card.



User Guide and Maintenance



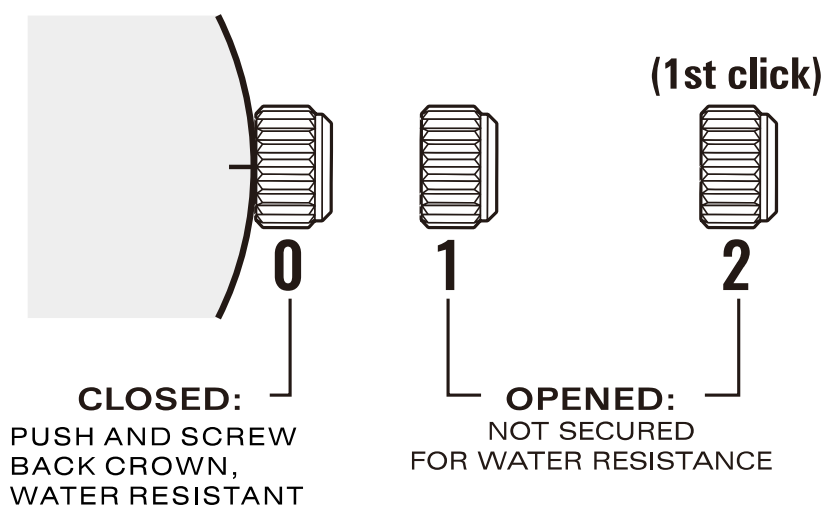
User Guide and Maintenance

PLEASE READ THE FOLLOWING BEFORE UNSCREWING THE CROWN

Screw-down Crown

Screw-down crowns are used to ensure water resistance. **ALWAYS** be certain that your crown is securely screwed down (Position [0] is secured. Positions [1],[2] are not secured for water resistance).

Do **NOT** unscrew your crown while you are in any environment where moisture is present.

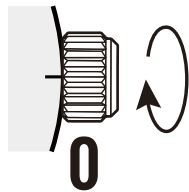


User Guide and Maintenance

BEFORE YOU USE THIS WATCH, IT IS RECOMMENDED THAT YOU MANUALLY WIND THE MAINSPRING TO START IT MOVING.

THIS WATCH IS AN AUTOMATIC WATCH EQUIPPED WITH A MANUAL WINDING MECHANISM.

WINDING THE MAINSPRING

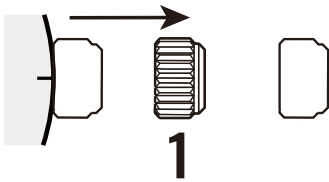


When the crown is in position **[0]**, turn the crown clockwise to wind. Wind 5-10 times and it will start to move naturally after shaking slightly.

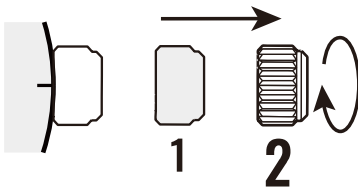
- * This watch **MUST** be worn for at least 8 (Eight) hours each day to ensure it is fully wound. An automatic watch will only wind when the watch is on your wrist and your arm moves. Winding the watch by the crown will put power on the spring but not enough to allow the watch to function fully. If your watch stops overnight or loses time it means it is not being fully wound.

User Guide and Maintenance

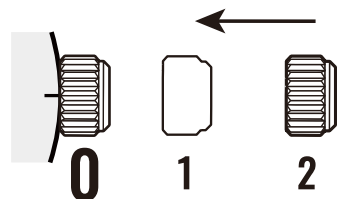
HOW TO SET THE TIME



- 1) Screw out the crown to pop-up crown to the first position.



- 2) pull out the crown to the second position, turn the crown to set hour and minute hands



- 3) Screw up and pop up the crown to the first position.

* Take a.m./p.m. into consideration when setting the hour and minute hands to the desired time.

User Guide and Maintenance

TO WIND UP THE MAINSPRING

a) Manual winding (Rotate the crown clockwise at first position) Fully wound up by turning the crown minimum 55 times. It will start to move naturally after shaking slightly.

b) To wind up with winding machine. Full wind up conditions (Reference information)

- Rotary speed : 30 rpm
- Operating time : 60 minutes

User Guide and Maintenance

WATER RESISTANCE

The water resistance indicated on your timepiece serves only as a guide. Actual water resistance may vary depending on a number of important factors including temperature, water salinity, and actual use under water.

The water resistance of your timepiece may eventually be compromised over time with general wear and tear and the use of your watch under adverse conditions.

Always remember to employ the screw down crown (if available) to maintain the water resistance of your timepiece. Warranty may be voided if the screw down crown has not been properly employed.

Note that you should **NEVER** wear your watch in a jacuzzi, hot shower or steam room where steam may enter the case despite the watertight seals used to protect your watch.

The steam may cause condensation inside your watch, which may affect and damage the inner workings of your watch - which would also not be covered by the warranty.

Aquatrident

AQUATRIDENT In the deepest oceans
BEST DIVE WATCHES

Explore the past with great ease



Thanks for choosing our product.

Start exploring new world with our watch now.



AQUATRIDENT