



# ELSPET SMART CAT LITTER BOX





## User manual

---

Thank you for using elspet products. For your safety and better use of this product, please read this user manual carefully. Keep this manual properly for future use.

## ■ Product specification

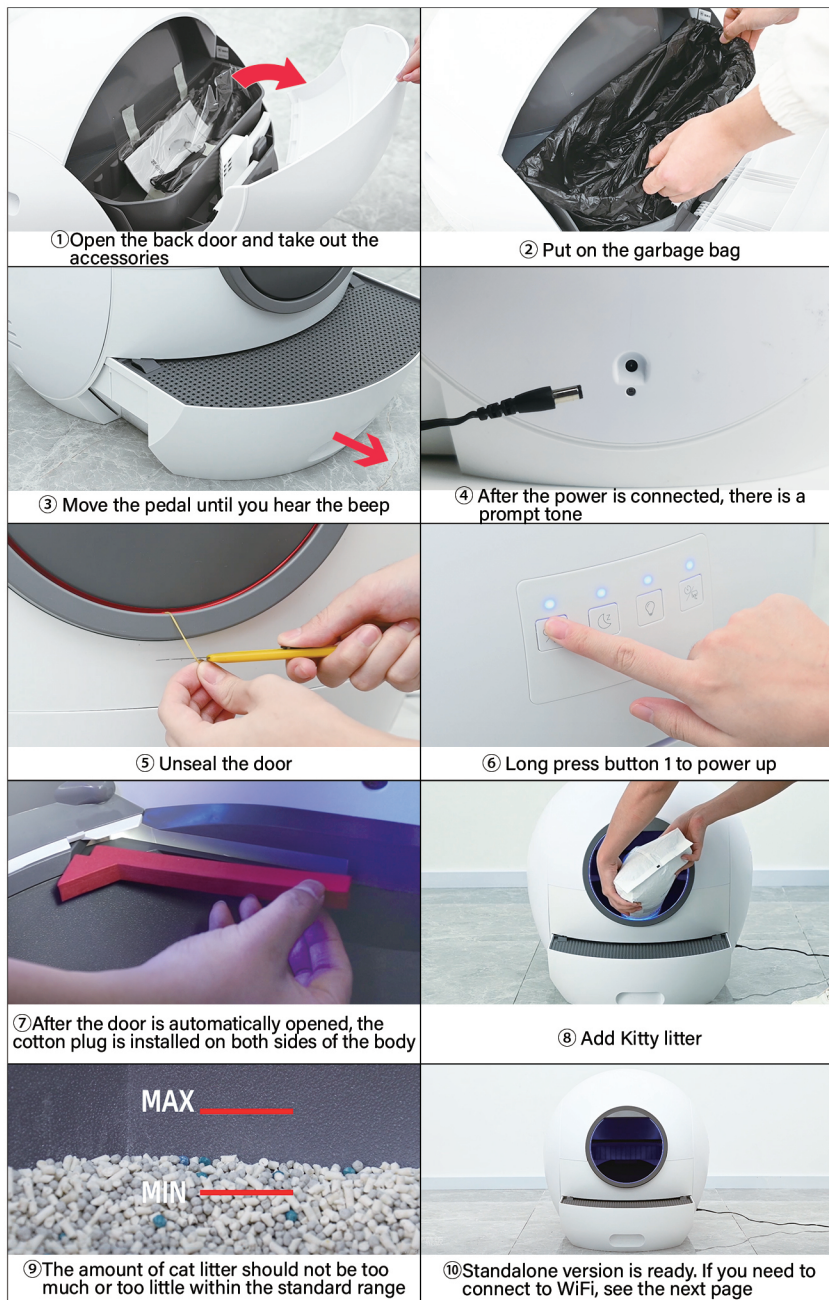
Product name	Elspet Smart cat litter box
Input voltage	AC110V-220V 50/60Hz
Output voltage	DC 12V
Motor	Mute DC reduction motor
Maximum power	36W
Standby power	3W
Product size	600mmx600mmx580mm
Product weight	12kg
Adapter	DC12V 4A  
Shell material	ABS
Capacity	sand basin 5L garbage box 4L

## ■ Important note

- Pull the pedal out before use
- Adjust the time according to the actual situation
- Do not push the door
- Timely sand replenishment
- Don't use long strips of tofu Kitty litter
- Do not expose yourself to ultraviolet rays for a long time
- Dispose of litter boxes in time
- Clean pedals, garbage boxes, inner doors, claws and sand basins regularly
- Use the 12V4A adapter. Do not use other adapters
- If you need to move or transport, please press shutdown and then power off

## ■ Preparation steps before use

(Mixed or bentonite cat litter less than 5mm in length is recommended)



## ■ Bind Elspet smart APP

Software Installation method:

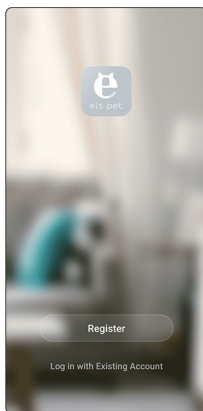
- ① Scan the QR code on the right to download and install
- ② Apple App Store search elspet
- ③ Google App Store search for Elspe



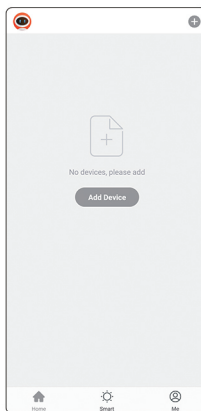
## ■ APP Connection Steps



① Hold down the fuselage 1.2 at the same time



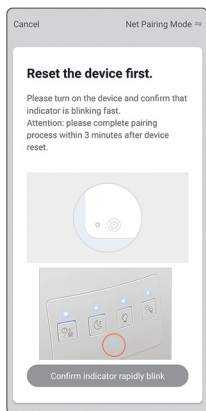
② Connect WiFi in advance and open the app



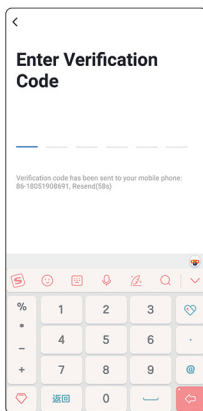
③ Click add device



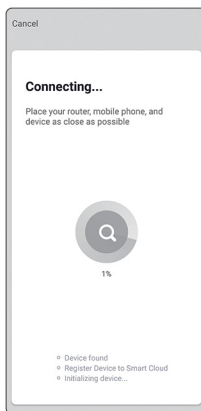
④ Select the litter box icon



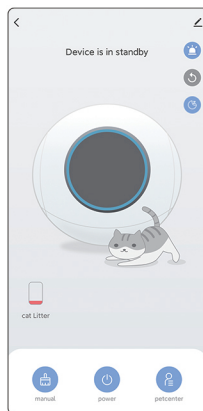
⑤ Confirm that the indicator is blinking at short intervals



⑥ Enter the WiFi password



⑦ Wait for loading




⑧ Complete the connection




# APP sand indicator and reset

## Sand quantity reset method 1




cat Litter

The initial sand content is green



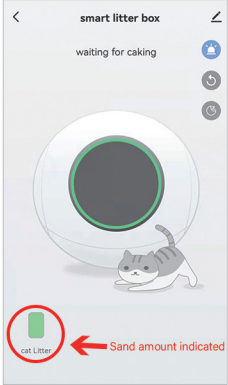
cat Litter

Turns yellow after 25 runs



cat Litter

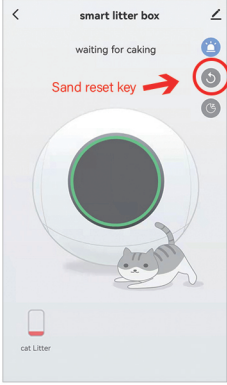
Turns red after 80 runs



smart litter box

waiting for caking

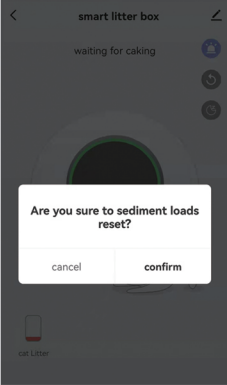
Sand amount indicated



smart litter box

waiting for caking

Sand reset key



Are you sure to sediment loads reset?

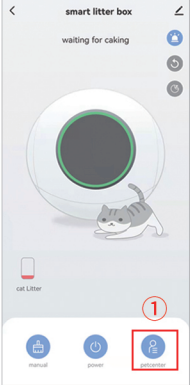
cancel confirm

\* The initial sand quantity indicator is green, at this time, it is necessary to add an appropriate amount of cat litter in the sand basin, referring to the scale in the basin

If the sand amount is insufficient, please add sand in time, and click the sand amount reset button after adding sand

Confirm resetting the cat litter

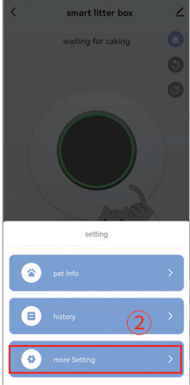
## Sand quantity reset method 2



smart litter box

waiting for caking

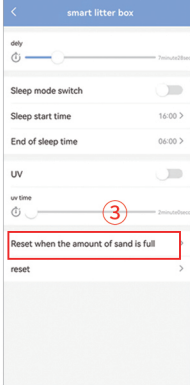
1



smart litter box

waiting for caking

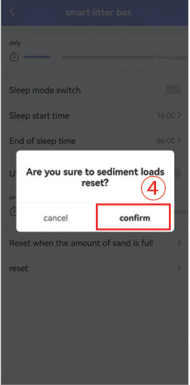
2



smart litter box

3

Reset when the amount of sand is full

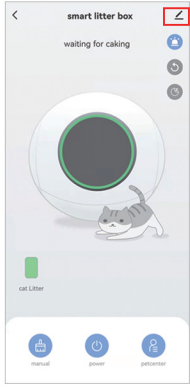


Are you sure to sediment loads reset?

4

confirm

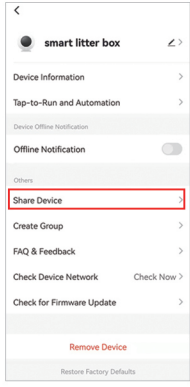
# APP Device Sharing



smart litter box

waiting for caking

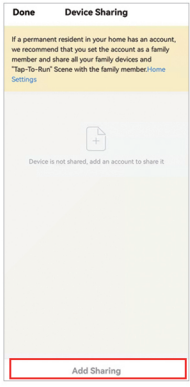
1



smart litter box

Share Device

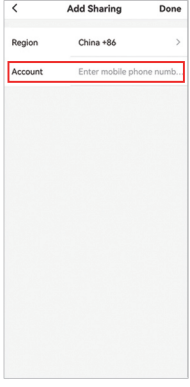
2



Done Device Sharing

3

Add Sharing



Add Sharing

4

Enter the mobile phone account for sharing

After configuring the network, click Edit

Click Share Device

Click "Add Share"

Enter the mobile phone account for sharing  
A maximum of 10 devices can be bound

■ Detailed explanation of assembly method



## ■ Disassembling cleaning steps



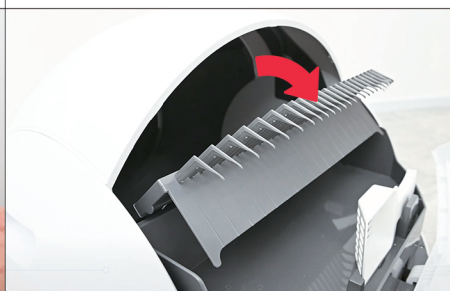
① Open the back door and take out the garbage bag



② Remove the inner door cover



③ Press key 1 and then key 4



④ Wait for the rake to lift



⑤ Press and hold the button to remove the claw



⑥ Press and hold the button to remove the pedal



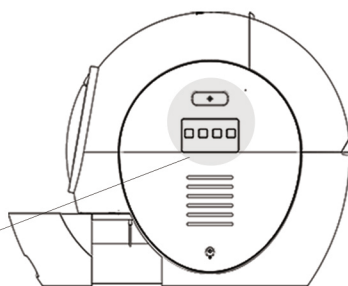
⑦ Press the bottom of the cat toilet and take out the sand bowl



⑧ Cleaning components

# ■ Product Function Introduction

## 1. Button system



Right View of the product

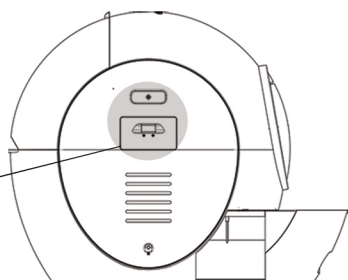
Button ①: power switch: press to start; Long press shutdown; When the machine is on, press open manual feces shoveling

Button ②: Quiet sleep switch: the indicator light means open (in standby state at night), to the day automatic reply

Button ③: lamp ring switch: open can be used for lighting, off in the closed state, specific instructions see the next page

Button ④: Mode button: On indicates that the switch is started  
Press once in the power-on state to increase the cat litter gathering time from 10 minutes to 20 minutes  
Press once in the off state to enter the cleaning mode

## 2. Time adjustment



Left view of product

Long press the ① button, the hour hand flashes, and each press increases one hour.

Long press the ② button, the minute hand flashes, and each press increases one minute.



## ■ Indicator ring diagram



Product front view

### Blue light:

Steady on: Standby

Blinking slowly: Sterilization and deodorization

### Green light:

Steady on: Ready mode

Flashing: Start shoveling feces

### Red light:

Steady on: pedal move

Slow flash: Sand basin sticking bottom (need to clean by oneself)

Flash: The machine is faulty

## ■ Ultraviolet sterilization instructions

After clearing the clumps, ultraviolet light turns on

Time: 20 minutes (APP adjustable time)

It automatically stops when the pet enters the cabin

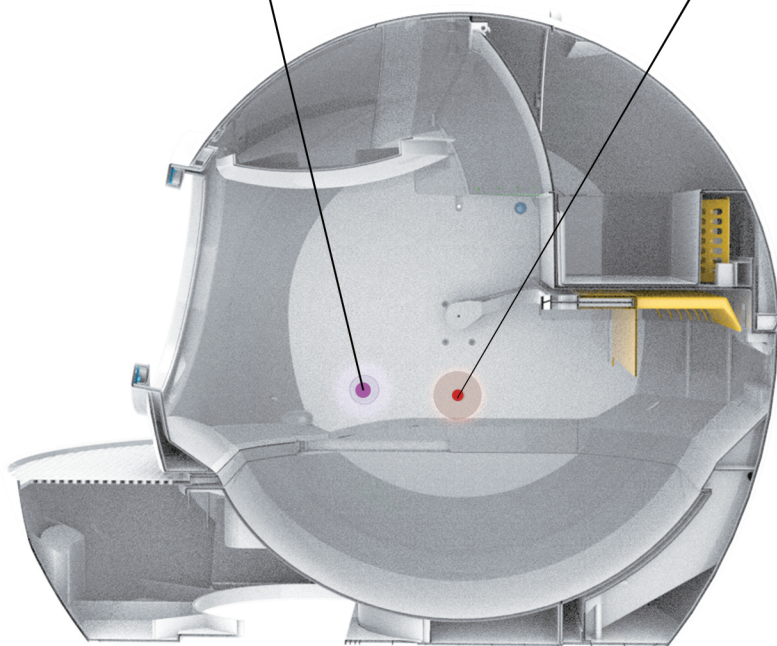




## ■ Induction system

After cleaning the clumps, ultraviolet light is turned on. The default time is 20 minutes (adjustable by APP). It automatically stops when the cat enters the cabin.

When the cat enters the cabin for more than 6 seconds and leaves the cabin, the shovel will be turned on and the lamp circle will change from blue long on to green long on. If the cat enters the cabin again for more than 6 seconds, the time will be recalculated.



Product internal structure

When the electric door is closing, pet entry will immediately stop closing and re-open.

## ■ Common faults/solutions

1. If the cat enters the interior when the door is about to close, the fuselage will detect the cat and immediately stop the door and reopen it 10 seconds after the cat leaves and then operate again to complete cleaning.
2. When the cat litter is found stuck to the bottom, the rake will stop working and sound the alarm, return to the original position and enter the standby state. (The red light ring of the stand-alone version is on, and the blue light ring of the wifi version is on), it can be used normally after the next cleaning.
3. The reason for displaying the foreign body card may be the door close switch shrapnel falling/door deformation/door motor damage/cat litter sticking to the bottom/too much cat litter/rake deformation, etc., which will prompt the red or blue light flashing.
4. If the garbage bag near the sand bin is not covered properly, the rake will be stuck. Please check and adjust it in time



els pet