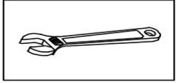
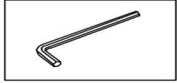


Concealed Shower Set Installation

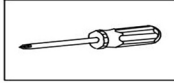
INSTALLATION MANUAL Tools You Will Need:



Adjustable wrench



Hexagon wrench



Philips Screwdriver

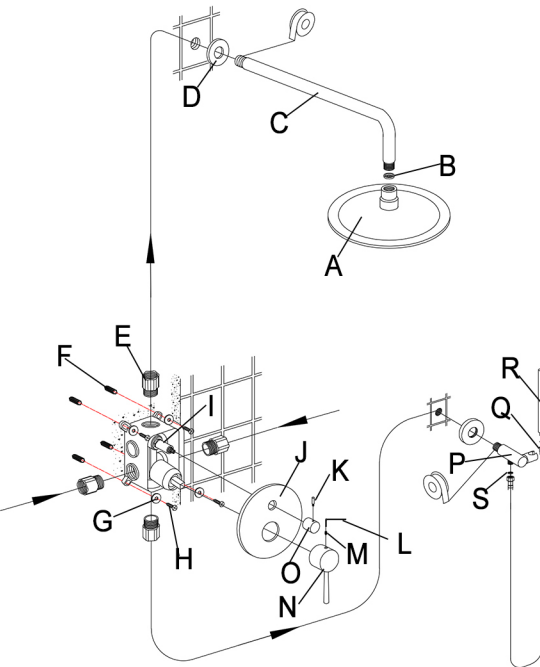
Before the Installation

1. Check the package and confirm all parts are included. If any part is missing or damaged, please contact us.
2. Do not disassemble the main body, as it has been installed & commissioned correctly & precisely before leaving the factory.
3. Shut off the main water supply prior to beginning installation.
4. Do flush the water supply lines to remove any dirt and debris before installation (**IMPORTANT**).
5. Make sure to connect the hot/cold inlet pipe correctly. If standing in front, connect hot water pipe to the left and cold water pipe to the right.
6. After the installation, check for leaks and make sure every joint is safely sealed.

Cleaning and Maintenance

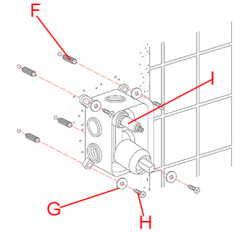
1. Rinse with clean water and dry with a soft cloth.
2. Do not use any detergent, acid, polisher, abrasives, or harsh cleaners.
3. Do not use cloth with a coarse surface.

Parts List

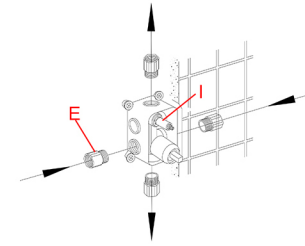


Part	Name	Quantity
A	head spray	1
B	rubber washer	1
C	shower arm	1
D	decor cover	2
E	water pipe connector	4
F	expansion bolt	4
G	gasket	4
H	expansion screw	4
I	valve body	1
J	cover plate	1
K	small handle rod	1
L	Allen key	1
M	set screw	1
N	handle	1
O	small handle	1
P	hand shower holder	1
Q	hose	1
R	hand shower	1
S	small rubber washer	2

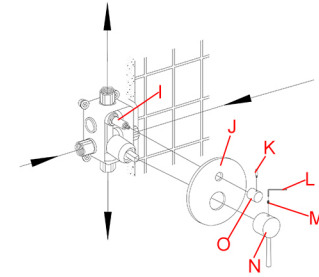
Installation Guide



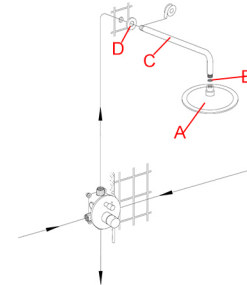
1. Shut off the water. Put the valve body (I) on the wall and mark four holes to drill according to the holes on the sides of the valve. Suit the expansion bolts (F) into the holes and secure the valve by screwing the expansion screws (H) through the gasket (G) into the expansion bolts as shown.



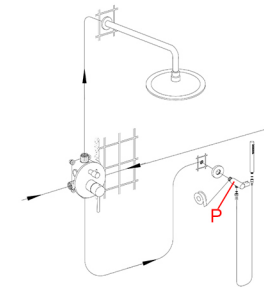
2. Screw up the water pipe connectors (E) into the wall and mark four holes to drill according to the holes on the sides of the valve body (I).



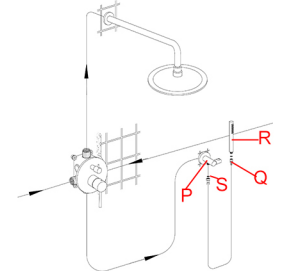
3. Connect your cold and hot water supply pipes to the valve body (I), hot to the left and cold to the right. Put the cover plate (J) onto the valve and push it against the wall. Insert the small handle (O) into the upper hole on the plate and fix it by screwing the small handle rod (K). Install the handle (N) by screwing a set screw (M) with an Allen key (L) through the other hole into the valve body.



4. Let the decor cover (D) go through the shower arm (C). Wrap up the threaded part of the of the arm and insert it into the pre-drilled hole on the wall. Push the cover against the wall. Insert the rubber washer (B) into the head spray (A) and screw it to the arm.



5. Apply the Teflon tape to the threaded part of the hand shower holder (P) and insert it into the pre-drilled hole on the wall.



6. Put small rubber washers (S) to both ends of the hose (Q) and connect the ends to the holder (P) and the hand shower (R). Put the hand shower on the holder.

Troubleshooting

Problem	Possible Cause	Corrective Action
Water does not shut off completely.	1. O-ring is not seated correctly or worn. 2. Cartridge may be defective.	1. Reseat or replace O-ring. 2. Replace cartridge.
Leaks at waterline connection.	1. Worn or broken washer. 2. Faucet body may be defective.	1. Replace washer. 2. Replace faucet (contact us for the replacement).
Leaks from handle.	1. Cartridge may come loose. 2. Cartridge may be defective.	1. Reseat cartridge tight. 2. Replace cartridge.
Leaks at hose connection.	1. Hose connection is loose.	1. Tighten hose. 2. Replace hose.
Leaks at shower valve connection.	1. Connection may come loose or not sealed completely. 2. Defective shower valve inlet or outlet connector.	1. Check connections. 2. Replace valve body.
Diverter knob does not work.	1. Diverter cartridge may be defective.	1. Replace cartridge.
LED light does not Light or noisy LED showerhead.	1. Defective LED generator.	1. Replace LED spray head (for kitchen faucet). 2. Replace LED threaded pipe (for separate faucet spout). 3. Replace LED generator (for others).
Low flow.	1. Check for water pressure problems. 2. Aerator may be dirty or clogged.	1. Clean or replace the aerator. 2. Remove waterflow restrictor if available. 3. Install booster or pump (if applicable).