

1.0 Reference and Address			
Report Number	21081380HKG-001	Original Issued: 15-Oct-2021	Revised: None
Standard(s)	Household Electric Cooking and Food Serving Appliances [UL 1026:2012 Ed.6+R:06Jun2019] Household Cooking and Liquid-Heating Appliances (R2014)>Partial Superseded Various Dates< [CSA C22.2#64:2010 Ed.7+U1;U2]		
Applicant	<u>Foshan Shunde AUG Electrical Appliance Co.,Ltd</u>	Manufacturer	<b><u>Foshan Shunde AUG Electrical Appliance Co.,Ltd</u></b>
Address	Unit 7, No.2 Xinhui Road, Wusha Village, Daliang Town, Shunde, Foshan City, Guangdong Province	Address	Unit 7, No.2 Xinhui Road, Wusha Village, Daliang Town, Shunde, Foshan City, Guangdong Province
Country	China	Country	China
Contact	Huang Zhidan	Contact	Huang Zhidan
Phone	13119882131	Phone	13119882131
FAX	NA	FAX	NA
Email	gc009@rongfangdq.com	Email	gc009@rongfangdq.com

DRAFT

2.0 Product Description	
Product	Steam air fryer oven
Brand name	Foshan Shunde AUG Electrical Appliance Co.,Ltd
Description	The product covered by this report is a household use, indoor use, cord connected Steam air fryer oven. Provided with a permanently attached flexible power supply cord terminated in a molded-on grounding type attachment plug.
Models	QE26AD-0002A
Model Similarity	NA
Ratings	120V, 60Hz, 1650W
Other Ratings	NA

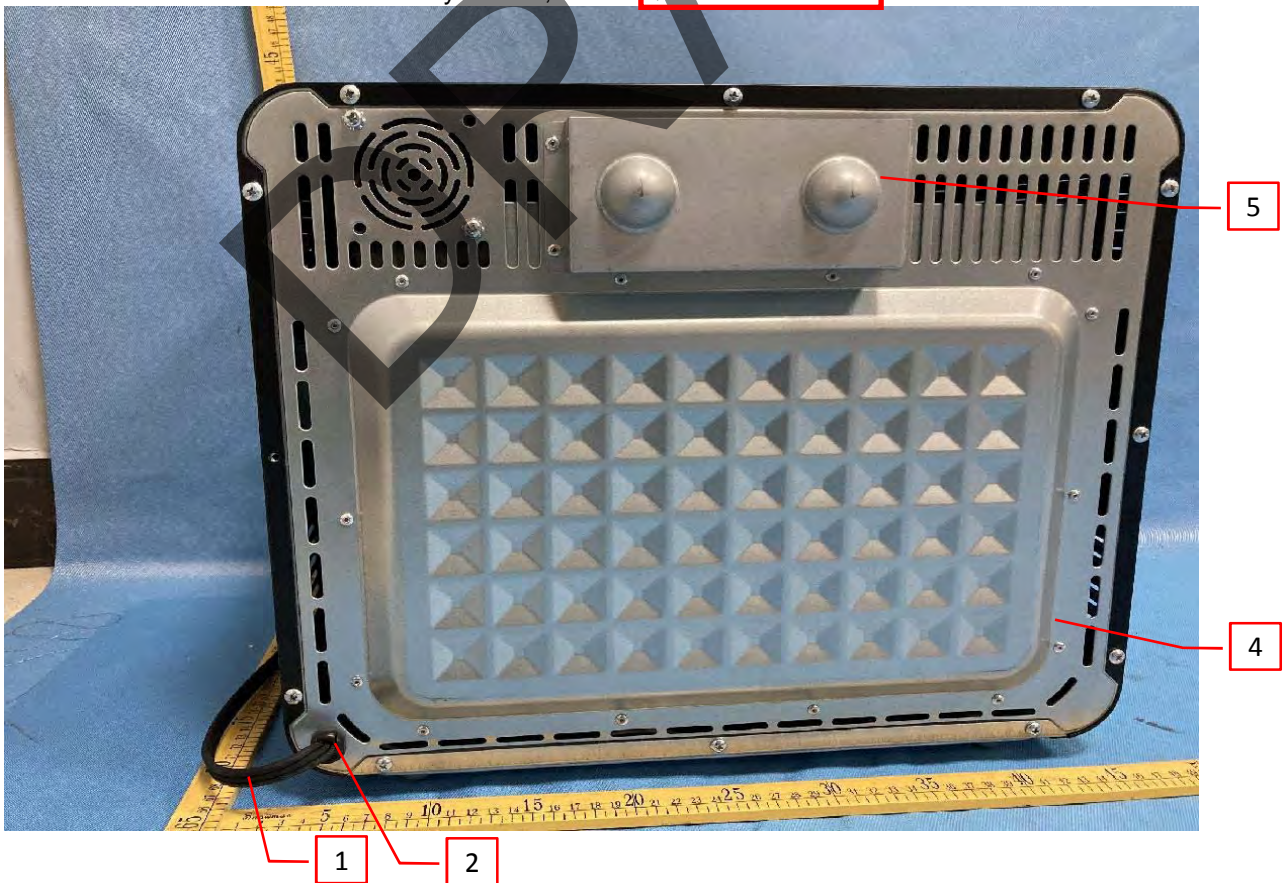
DRAFT

**3.0 Product Photographs**

Photo 1 - Overall view of Steam air fryer oven, model **QE26AD-0002A**



Photo 2 - Overall view of Steam air fryer oven, model **QE26AD-0002A**



**3.0 Product Photographs**

Photo 3 - Overall view of Steam air fryer oven, model QE26AD-0002A



Photo 4 - Overall view of Steam air fryer oven, model QE26AD-0002A



**3.0 Product Photographs**

Photo 5 - Overall view of Steam air fryer oven, model QE26AD-0002A

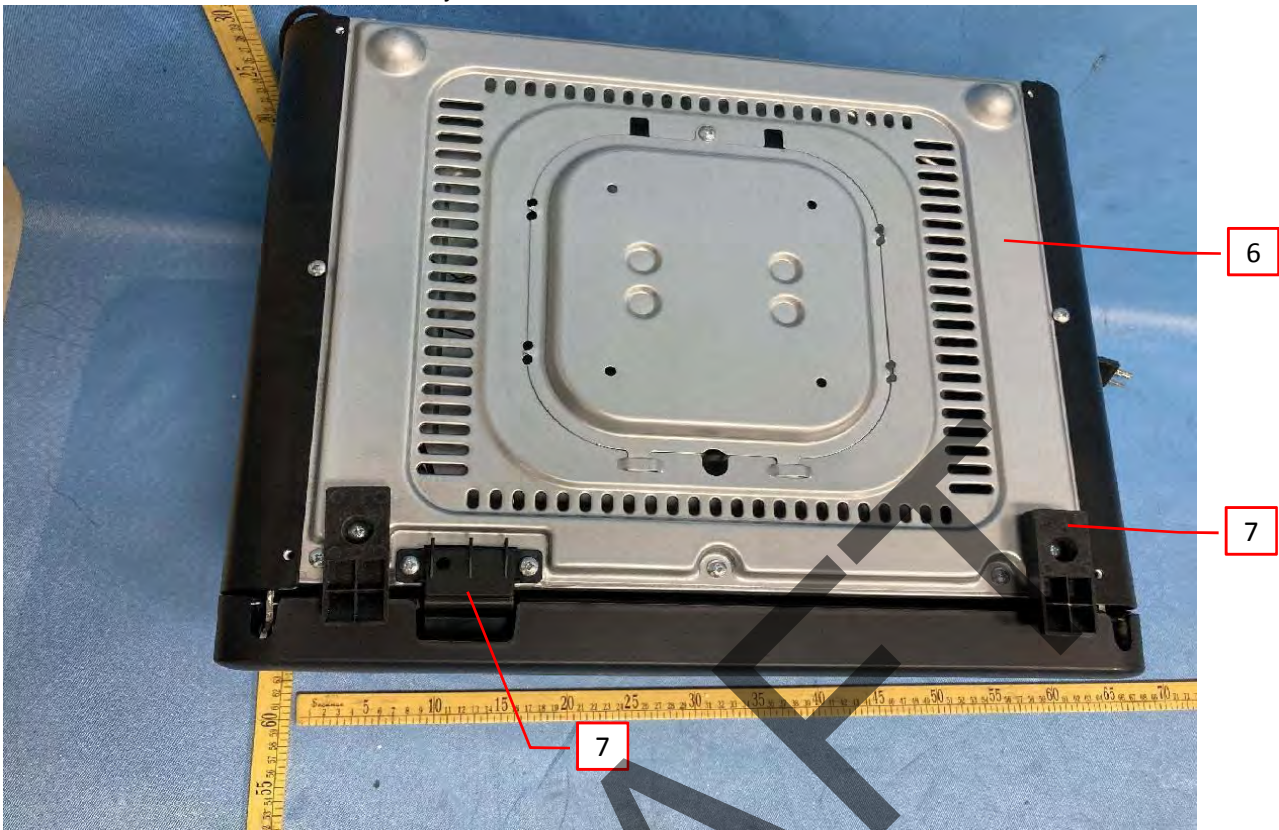
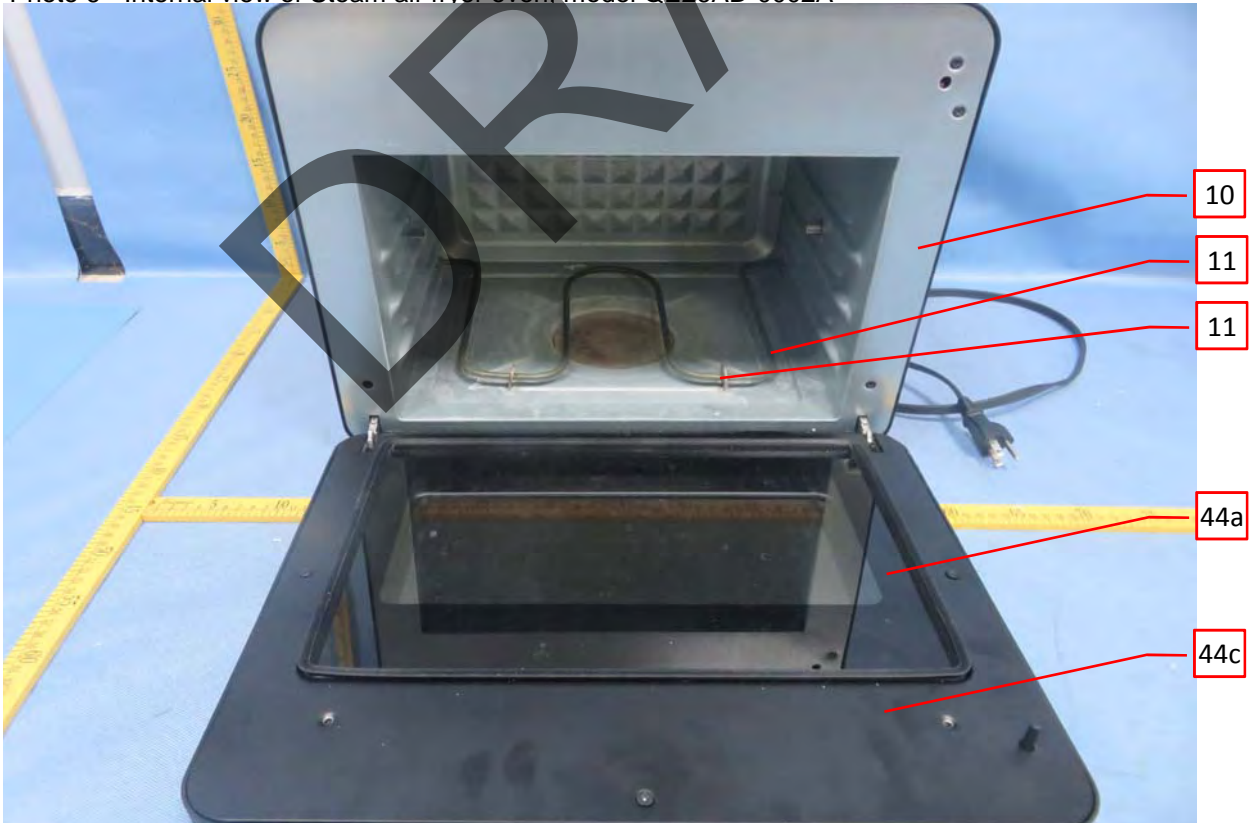


Photo 6 - Internal view of Steam air fryer oven, model QE26AD-0002A



**3.0 Product Photographs**

Photo 7 - Internal view of Steam air fryer oven, model QE26AD-0002A

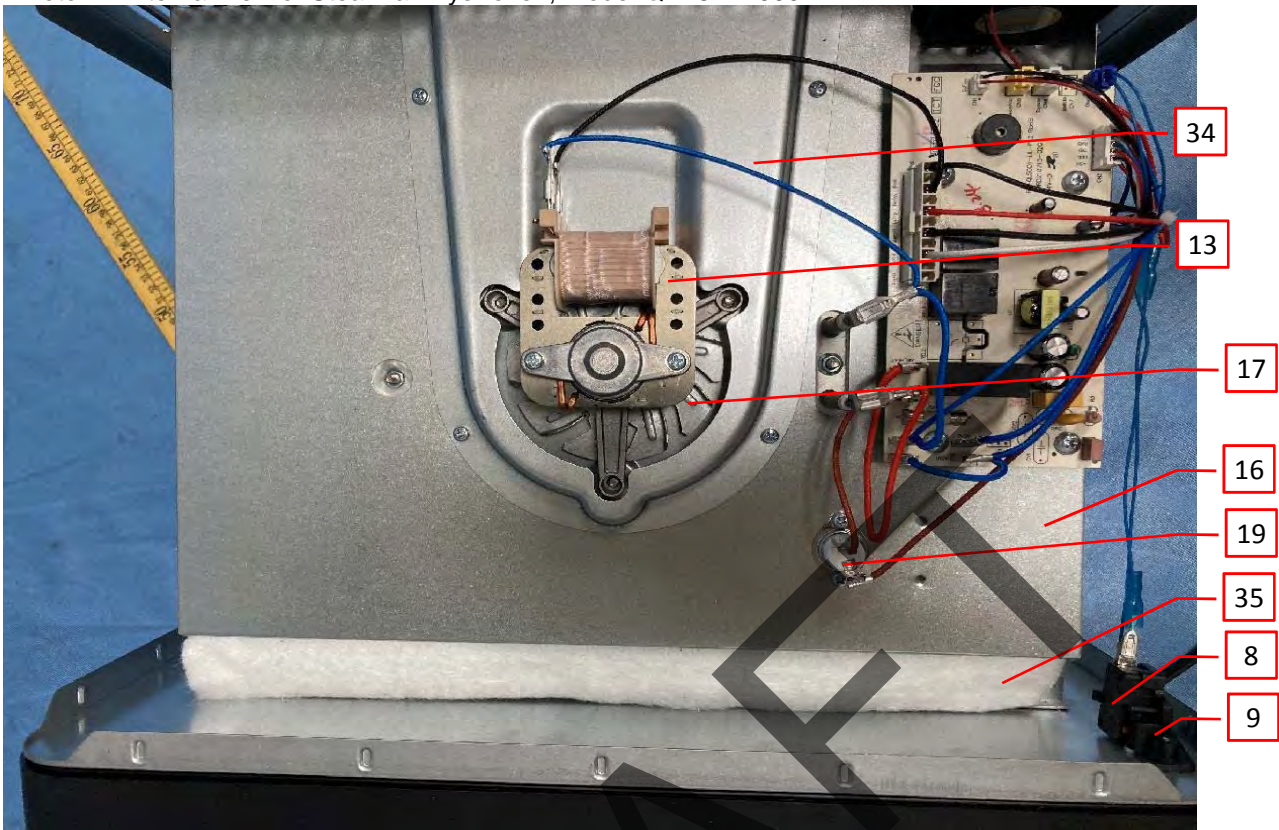
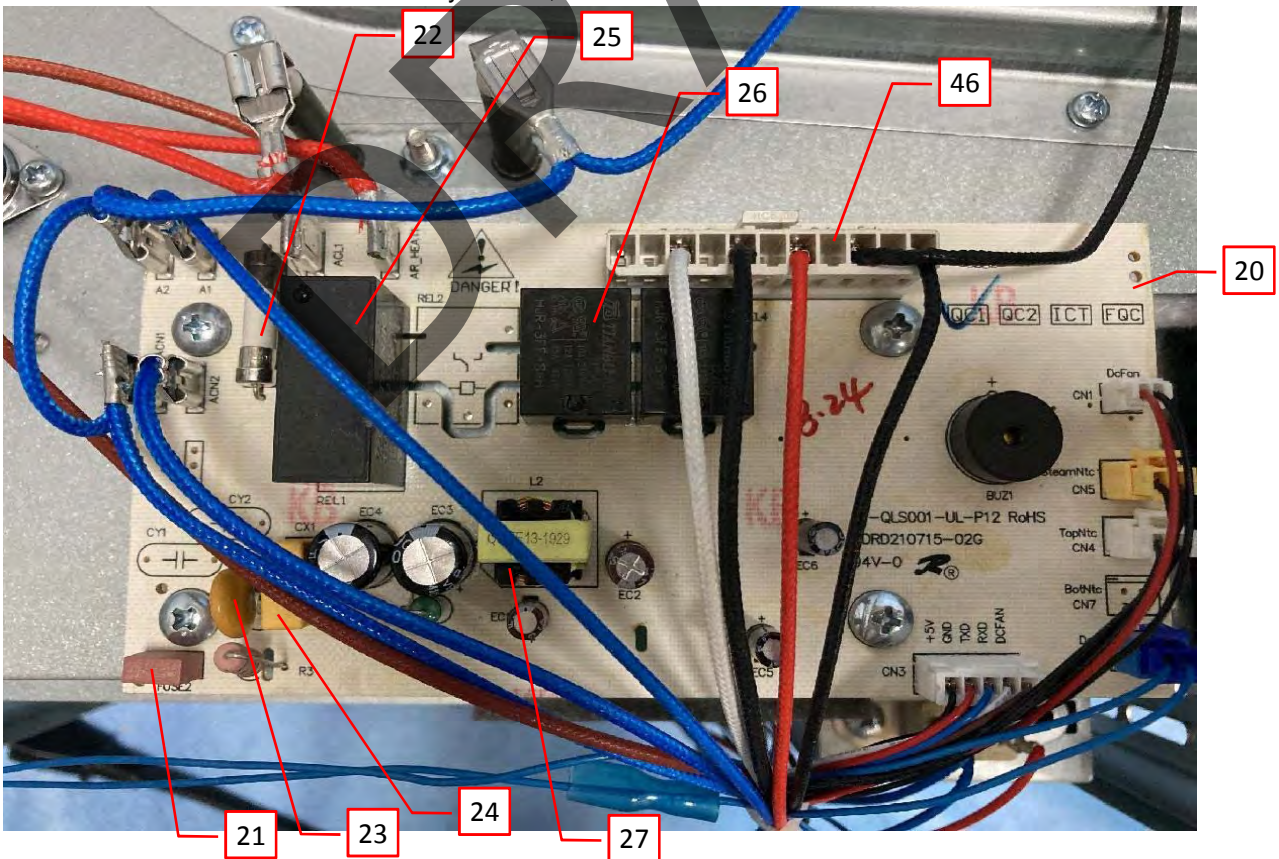


Photo 8 - Internal view of Steam air fryer oven, model QE26AD-0002A



**3.0 Product Photographs**

Photo 9 - Internal view of Steam air fryer oven, model QE26AD-0002A

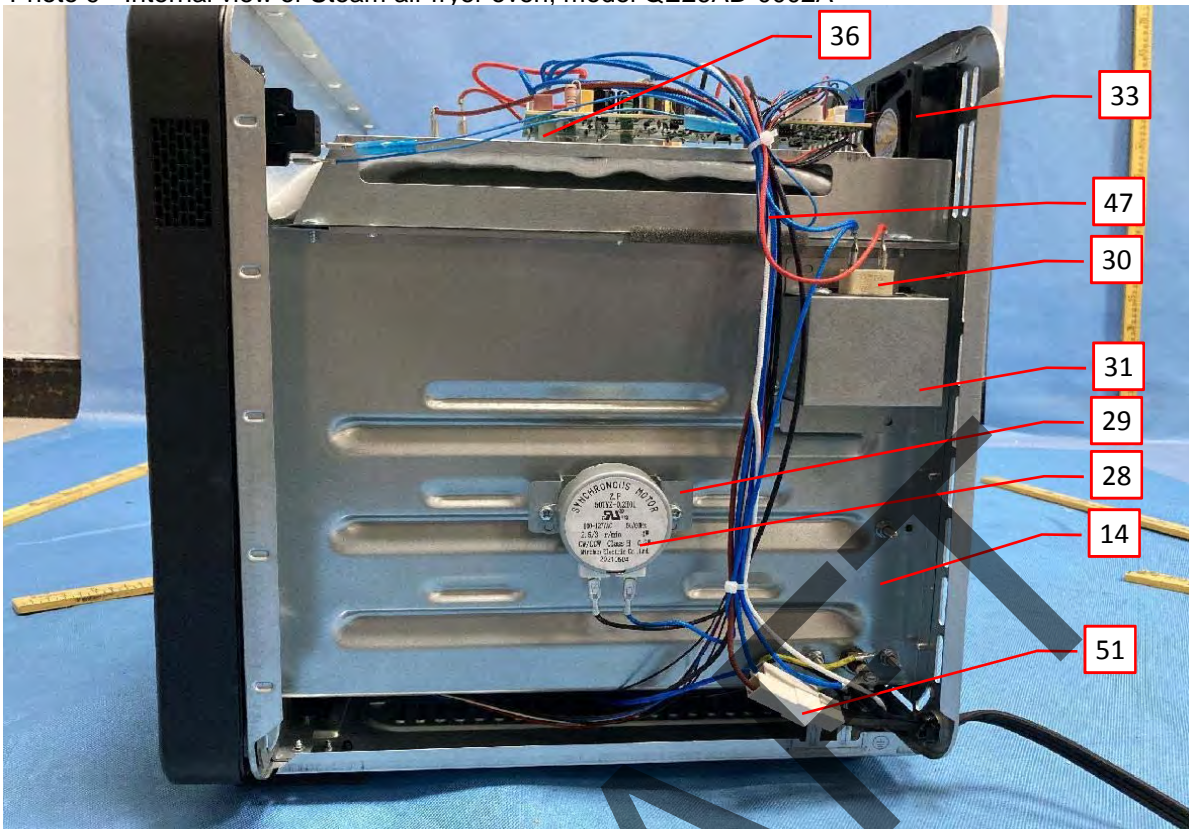


Photo 10 - Internal view of Steam air fryer oven, model QE26AD-0002A



**3.0 Product Photographs**

Photo 11 - Internal view of Steam air fryer oven, model QE26AD-0002A

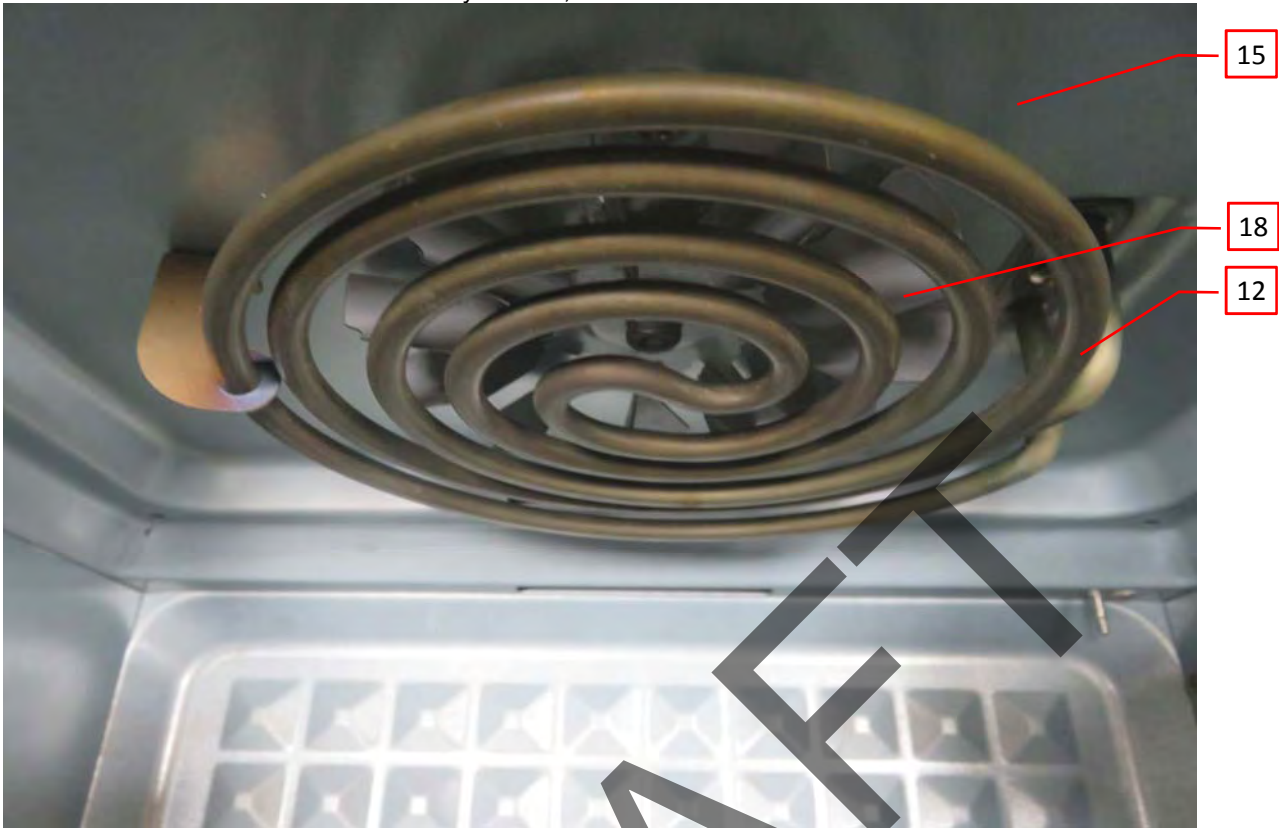
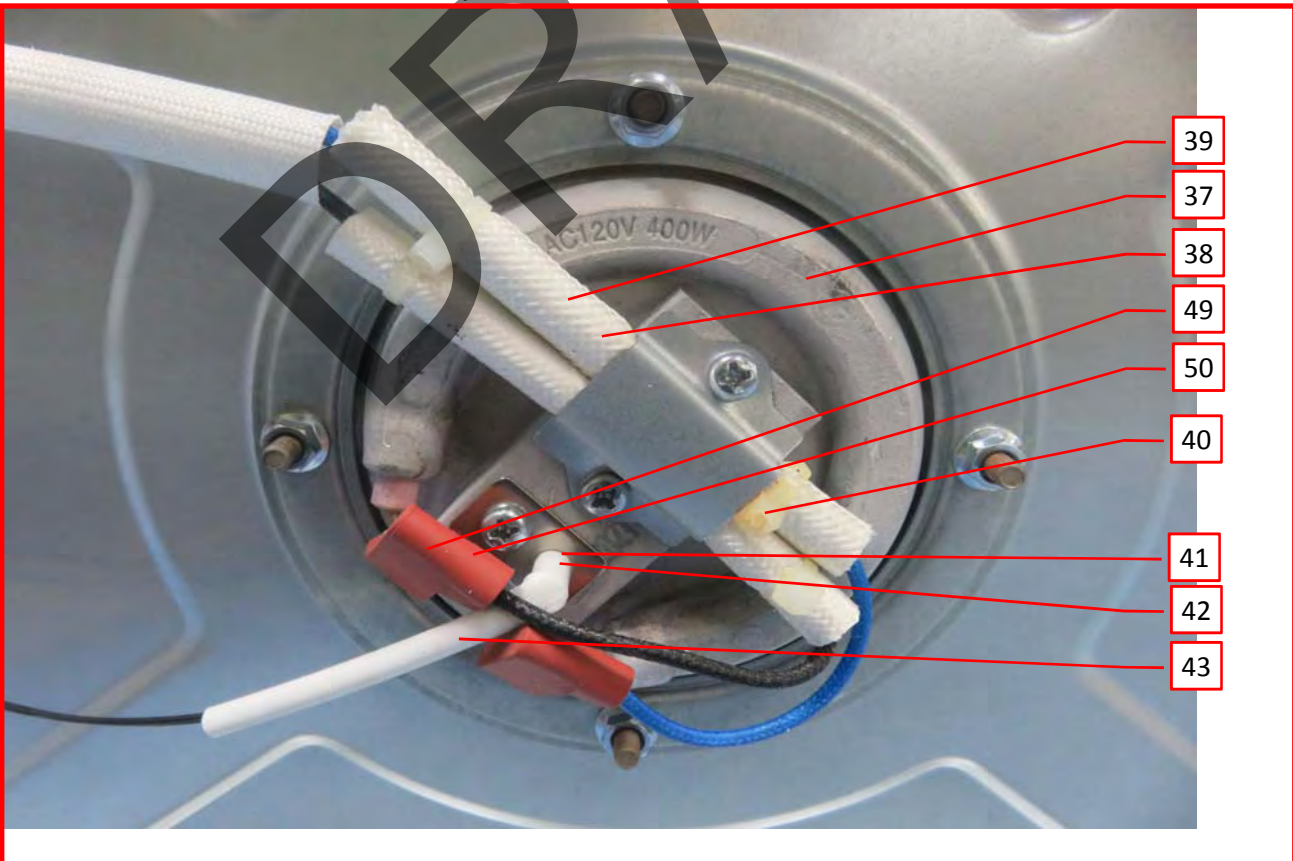


Photo 12 - Internal view of Steam air fryer oven, model QE26AD-0002A





**3.0 Product Photographs**

Photo 13 - Internal view of Steam air fryer oven, model QE26AD-0002A

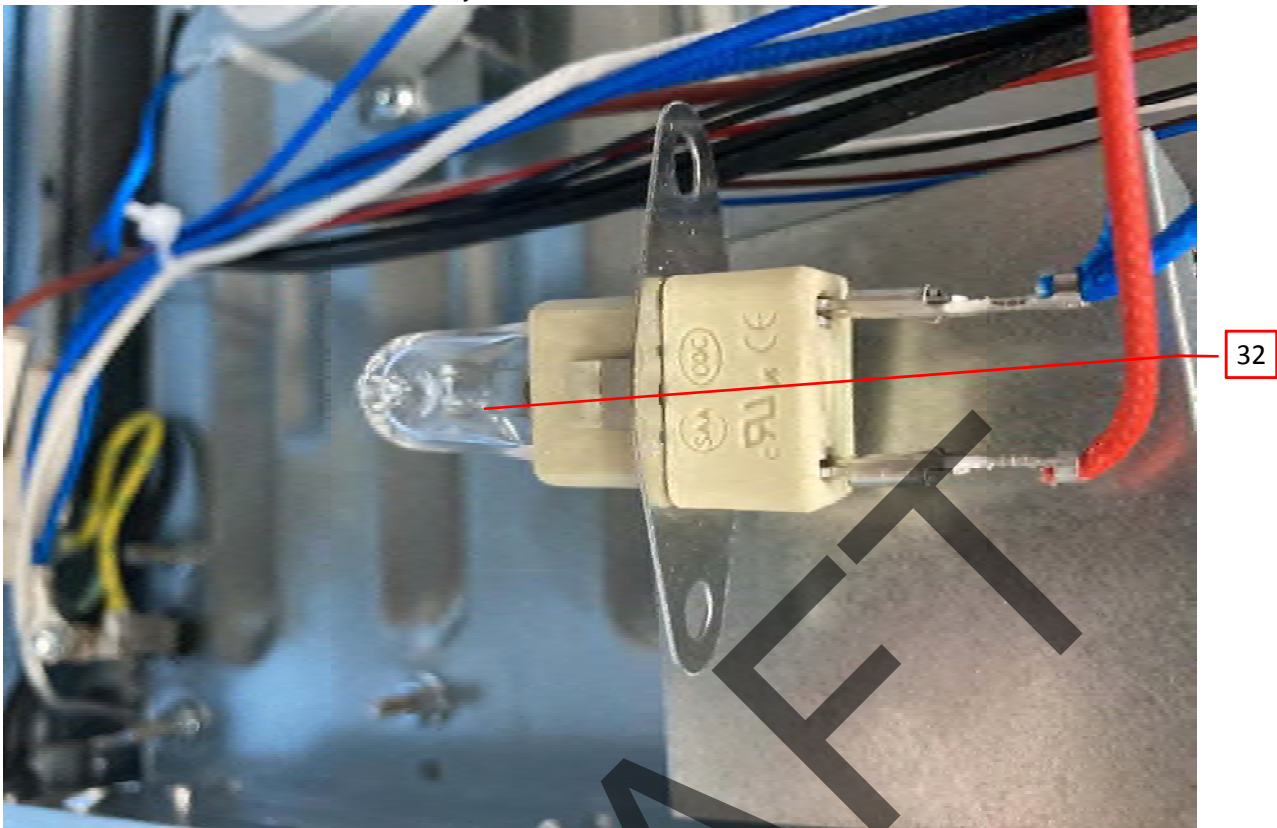
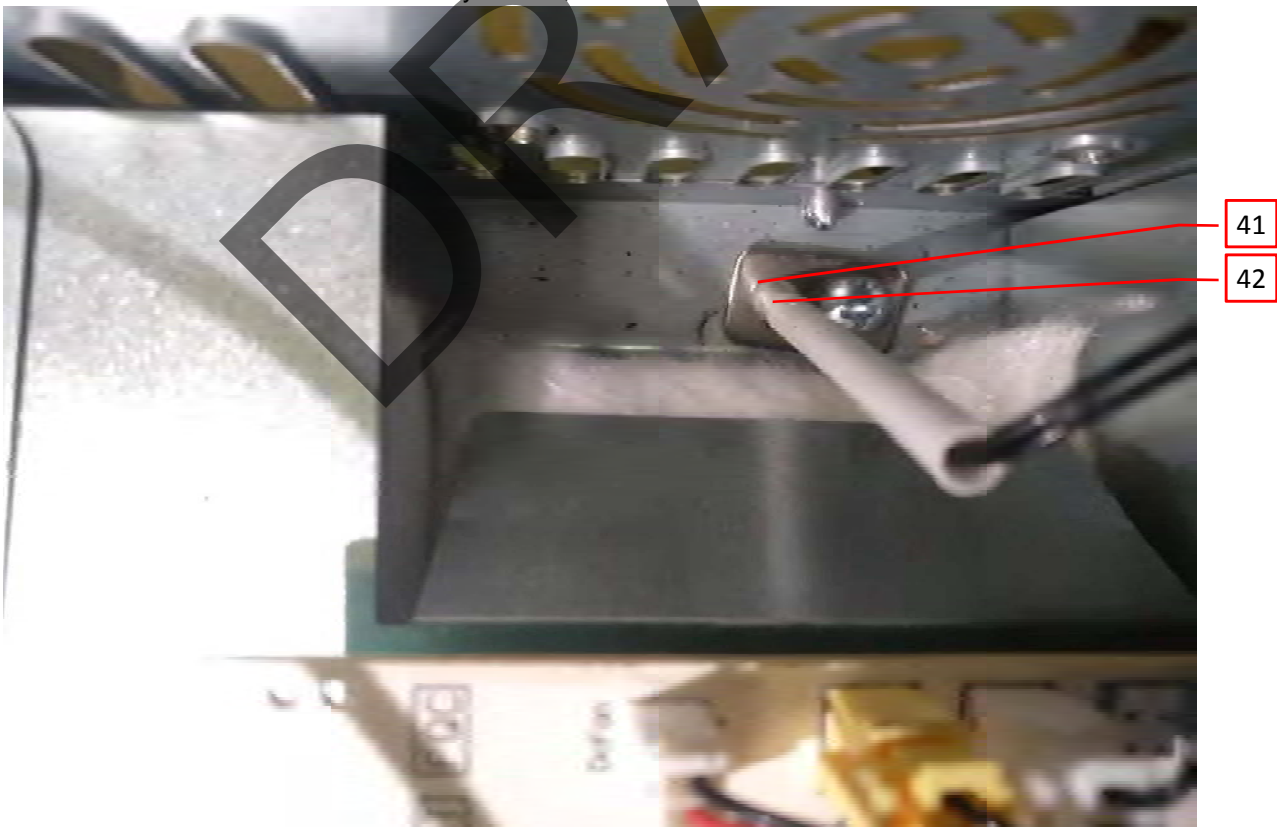


Photo 14 - Internal view of Steam air fryer oven, model QE26AD-0002A



**3.0 Product Photographs**

Photo 15 - Internal view of Steam air fryer oven, model QE26AD-0002A

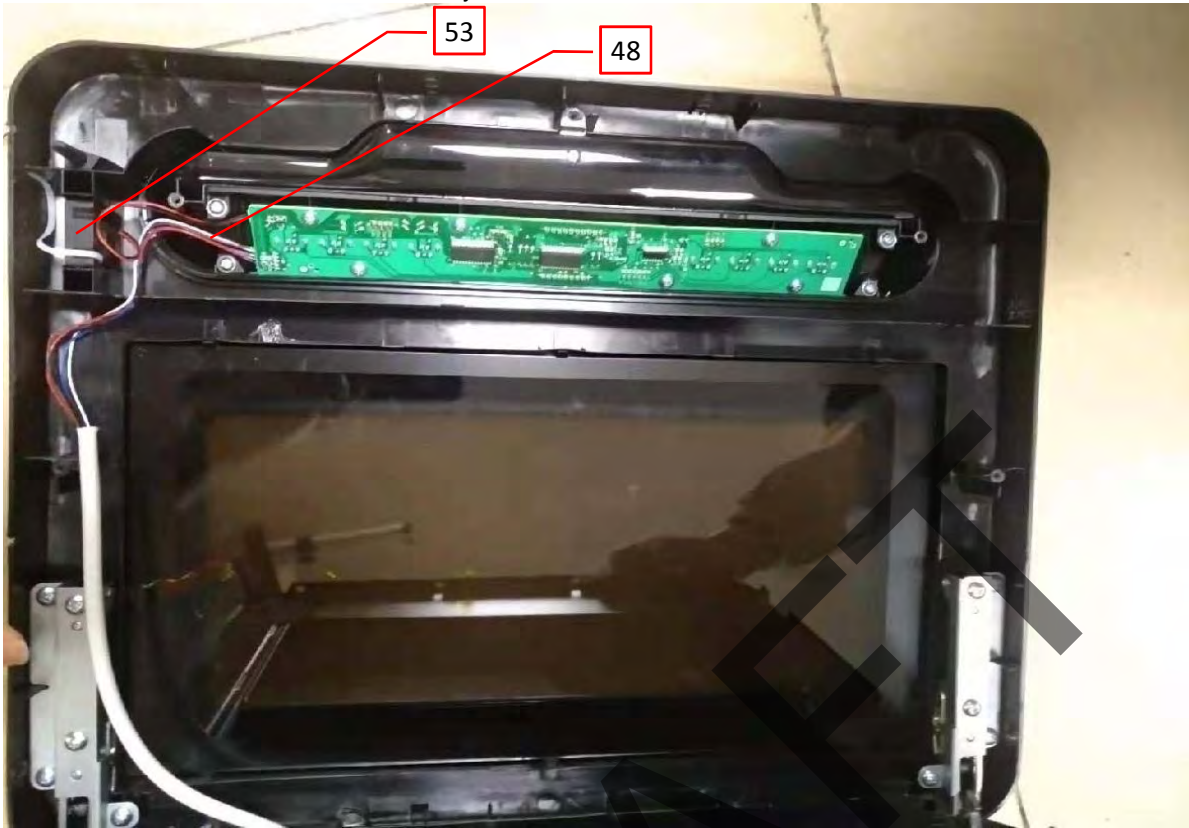


Photo 16 - Internal view of Steam air fryer oven, model QE26AD-0002A



### 3.0 Product Photographs

Photo 17 - Internal view of Steam air fryer oven, model QE26AD-0002A



4.0 Critical Components						
Photo #	Item no. <sup>1</sup>	Name	Manufacturer/ trademark <sup>2</sup>	Type / model <sup>2</sup>	Technical data and securement means	Mark(s) of conformity <sup>3</sup>
2	1	Power Supply Cord Set	Various	HPN	Rated #16AWG X 3C, 300V, 105° C, VW-1. Cord length 0.61-2.1m. Terminated in a polarized type attachment plug, rated 125V, 15A minimum.	cULus
2	2	Strain Relief	HEAVY POWER CO LTD	4N-4	Suitable for HPN, 16AWG x 3C power cord.	UR
3	3	Enclosure	Various	Plated Steel	0.5mm thick minimum.	NR
2	4	Back Plate	Various	Plated Steel	0.4mm thick minimum.	NR
2	5	Steam Outlet	Various	Plated Steel	0.4mm thick minimum.	NR
5	6	Bottom Plate	Various	Plated Steel	0.6mm thick minimum.	NR
5	7	Foot	Various	Thermoplastic	Rated 94-HB, 60°C minimum. (2 parts provided)	cURus
7	8	Micro Switch	GUANGDONG YUSHUN ELECTRIC APPLIANCE LTD	KW-16	Rated 125Vac, 16A, 125°C.	cURus
			DONGNAN ELECTRONICS CO LTD	KW3A-T	Rated 125/250Vac, 16A, 105°C.	cURus
			DONGNAN ELECTRONICS CO LTD	KW3A	Rated 125/250Vac, 16A, 105°C.	cURus
			DONGNAN ELECTRONICS CO LTD	KW3A-10	Rated 125/250Vac, 10A, 105°C.	cURus
7	9	Micro Switch Bracket	Various	Thermoplastic	Rated 94V-0, 115°C minimum.	cURus
6	10	Front Enclosure	Various	Plated Steel	0.5mm thick minimum.	NR
6	11	Lower Heater	Zhongshan Yangda Hardware Electric Co., Ltd.	YD 120V 550W	Rated 120V, 60Hz, 550W.	NR
			GUANGDONG HEADWAY ELECTRIC HEATING TECHNOLOGY CO LTD	HW-RGQ-01 (550W)	Stainless Steel Sheath Type Heater. Rated 120V, 550W.	cURus
6	11a	Metal Sheath	Various	Stainless Steel	0.5mm thick. Diameter: 6.6mm.	NR
6	11b	Heating wire	Various	NiCr	φ0.35mm, ??Ω, ??Ω/m, O.D.= ??mm.	NR
6	11c	Insulation Material	Various	MgO	Fitted to Metal Sheath.	NR
6	11d	Cold Pin (2 provided)	Various	Plated steel	2 mm in diameter, 15mm in length.	NR
11	12	Upper Heater	Zhongshan Yangda Hardware Electric Co., Ltd.	YD 120V 1600W	Rated 120V, 60Hz, 1600W.	NR
			Guangdong Headway Electric Heating	HW-RGQ-01 (1600W)	Stainless Steel Sheath Type Heater. Rated 120V, 1600W.	cURus
11	12a	Metal Sheath	Various	Stainless Steel	0.5mm thick. Diameter: 6.6mm.	NR
11	12b	Heating wire	Various	NiCr	φ0.35mm, ??Ω, ??Ω/m, O.D.= ??mm	NR
11	12c	Insulation Material	Various	MgO	Fitted to Metal Sheath.	NR

4.0 Critical Components						
Photo #	Item no. <sup>1</sup>	Name	Manufacturer/ trademark <sup>2</sup>	Type / model <sup>2</sup>	Technical data and securement means	Mark(s) of conformity <sup>3</sup>
11	12d	Cold Pin (2 provided)	Various	Plated steel	2 mm in diameter, 15mm in length.	NR
7	13	Fan Motor	ZHUOGAO MOTOR MFG CO LTD	YJ61-20E	Rated 110-120VAC, 60 Hz, 35W, Class H.	cURus
9	14	Chamber	Various	Plated steel	0.4mm thick minimum.	NR
11	15	Ceiling Panel	Various	Plated steel	0.4mm thick minimum.	NR
7	16	Heat-Insulation Board	Various	Plated steel	0.4mm thick minimum.	NR
7	17	Inner Fan Blade	Various	Plated steel	0.6mm thick minimum.	NR
11	18	Outer Wind Blade	Various	Plated steel	0.8mm thick minimum.	NR
7	19	Thermostat	GUANGDONG SHUNDE ZHONGBAO THERMOSTAT TECHNOLOGY CO LTD	KSD301-C	Rated 125V, 16A, Tf=180°C.	cURus
			FOSHAN TIANPENG THERMOSTATS CO LTD	T1/33	Rated 125V, 16A, Tf=180°C.	cURus
8	20	Main PCB, Control PCB	Various	Single layer printed wiring boards	Rated 94V-0, 130°C, 1.5mm thick minimum, meet UL796 DSR.	cURus
8	21	Fuse	Various	Supplemental micro fuses	Rated 250Vac, 2A, size: 8.4mm x 4.0mm x 7.7mm or 8.5mm x 4mm x 8mm.	cULus
8	22	Fuse	Various	Supplemental micro fuses	Rated 250Vac, 16A, size: 5.2mm x 20mm or 5mm x 20mm.	cURus
8	23	Varistor	Various	Surge-protective Devices	Rated 270Vdc, T105 minimum, 10mm diameter.	cURus
8	24	X2 Capacitor	Various	Fixed Capacitors	Rated 275Vac, T105 minimum, 0.1uF.	cURus
8	25	Relay (REL1)	NINGBO TIANBO GANGLIAN ELECTRONICS CO LTD	TRA2	240 Vac 16A /85°C Max	cURus
			ANHUI MINGGUANG LIFE ELECTRIC CO LTD	BRT3 Series	240 Vac 16A 85°C Max	cURus
			SHENZHEN YUANZE ELECTRIC CO LTD	Y3U-SS-112LMF	240 Vac 17A 105°C Max	cURus
8	26	Relay (REL3, REL4)	NINGBO TIANBO GANGLIAN ELECTRONICS CO LTD	HJR-3FF-S-H 12VDC?	240Vac 10A 85°C Max	cURus
			Sanyou Corporation Limited	SRD-S-112DM	250Vac 10A 85°C Max	cURus
			SHENZHEN YUANZE ELECTRIC CO LTD	Y3F-SS-112DM	250Vac 10A 105°C Max	cURus

4.0 Critical Components						
Photo #	Item no. <sup>1</sup>	Name	Manufacturer/ trademark <sup>2</sup>	Type / model <sup>2</sup>	Technical data and securement means	Mark(s) of conformity <sup>3</sup>
8	27	Inductor (L2)	Foshan Shunde Dongyuhui Electronics Co., Ltd.	EE13	Rated 0.5mH. Consisted of the following components:	NR
8	27a	Bobbin	Various	Thermoplastic	Rated 94V-0, 150°C, HWI=1, HAI=0. 0.75mm thick minimum.	UR
8	27b	Winding	WUZHOU TOREAL COPPER CO LTD	2UEW 155°C /QA-1 155°C	Rated 155 °C. N1: Φ0.35 mm, 87 turns.	UR
8	27c	Insulation Tape	Various	Insulation Tape	Rated 130°C minimum.	UR
9	28	Synchronous Motor	Minzhuo Electric Co Ltd	50TYZ-0.2H01	Rated 100-127VAC, 50/60Hz, 4W, 2.5/3R.P.M, Class H.	cURus
9	29	Synchronous Motor Bracket	Various	Plated steel	1.0mm thick minimum.	NR
9	30	Lampholder	Foshan City Shunde District Jieyong Appliances Industrial Co Ltd	YS-006A	Rated 250V, 2A, T??,	cURus
			Dongguan J&V Electronic Science and Technology Co Ltd	88.21 / 88.51	Rated 250V, 2A, T??,	cURus
9	31	Lamp Cover	Various	Plated steel	0.4mm thick minimum.	NR
13	32	Lamp	Various	Lamp	Rated 120V ??W.	NR
9	33	DC Fan	Guangdong Shunde RongFang Electrical Appliance Co., Ltd.	6020	Rated 12Vdc, 0.1A	NR
7	34	Motor Cover	Various	Plated steel ??	0.4mm ?? thick minimum.	NR
7	35	Heat Insulation	??	??	??mm thick.	NR
9	36	PCB Support (2 provided)	Various	Thermoplastic	Rated 94-??, ??°C, HWI=??, HAI=?? minimum.	cURus
6	37	Heater Support (2 provided)	Various	Plated steel ??	0.??mm thick minimum.	NR
12	37	Steam Heater	??	??	Rated 120V, 60Hz, 400W ??.	NR
12	37a	Metal Sheath	Various	Stainless Steel ??	0. ??mm thick. Diameter: ??mm.	NR
12	37b	Heating wire	Various	NiCr ??	φ0.??mm, ??Ω, ??Ω/m, O.D.= ??mm.	NR
12	37c	Insulation Material	Various	MgO	Fitted to Metal Sheath.	NR
12	37d	Cold Pin (2 provided)	Various	Plated steel ??	?? mm in diameter, ??mm in length.	NR
12	37e	Heater Plate	Various	Plated steel ??	0.??mm thick minimum.	NR
12	38	Thermal Link (2 provided)	??	???	Rated 1??V, ??A, Tf=??°C.	cURus
12	39	Thermal Link Sleeve	??	???	Rated ??V, ??°C.	cURus
12	40	Cable Tie	Various	Cable Tie	Rated 85°C minimum. Tied up internal wires	cURus
12, 14	41	NTC (Not Shown) (2 provided)	??	???	Resistance at 25°C:??kΩ, B value: ??50K	cULus

4.0 Critical Components						
Photo #	Item no. <sup>1</sup>	Name	Manufacturer/ trademark <sup>2</sup>	Type / model <sup>2</sup>	Technical data and securement means	Mark(s) of conformity <sup>3</sup>
12, 14	42	NTC Sleeving (Not Shown)	??	???	Rated ??V, ??°C.	cURus
12	43	Fiber Glass Sleeving	??	???	Rated ??V, ??°C.	cURus
1	44	Door Assembly	Various	Various	Consists of item 8a to 8e.	NR
6	44a	Inner Glass	??	Tempered glass	3mm thick minimum.	NR
1	44b	Outer Glass	??	Tempered glass	3mm thick minimum.	NR
6	44c	Inner Door Frame	Various	Plated steel	0.5mm thick minimum.	NR
1	44d	Outer Door Frame	E I DUPONT DE NEMOURS & CO INC	PA66, type FR50(+)(f1)	Rated 94V-0, 115°C, 1.5mm thick minimum.	cURus
1	44e	Control Panel	??	??	Rated 94-??, ??5°C, HWI=??, HAI=?? ??mm thick minimum.	cURus
5	45	Lead Wire Cover	??	??	Rated 94-??, ??5°C, ??mm thick minimum.	cURus
8	46	Wire Connector	Various	Wire Connector	Rated ???V, ??A, ??°C minimum, suitable for wire range #2??AWG.	cURus
9	47	Internal Wire	Various	AWM	Rated 300V, 200°C, #16-20AWG for connection of Micro Switch (Item 8), Fan Motor (Item 13), Lampholder (Item 30), DC Fan (Item 33); #16-20AWG for connection of heater?. Thermal Link?, thermostat??, NTC; #20-26AWG for connection of others.	cURus
15	48	Internal Wire	Various	AWM	Rated 300V, 125°C minimum, #20-26AWG for connecting to Control PCB(Item 20).	
12	49	Quick Connector	Various	Quick Connector	Suitable for lead wire #16-20AWG, W=6.3mm, T=0.8mm	cURus
					Suitable for lead wire #16-20AWG, W=4.75mm, T=0.3mm	cURus
12	50	Quick Connector Sleeving	Various	Quick Connector Sleeving	Rated 600V, 90°C minimum, VW-1.	cURus
9	51	Wire Connector	Various	Wire Connector	Rated ???V, ??A, ??°C minimum, suitable for wire range #2??AWG.	cURus
3	52	Label	Various	Pressure-sensitive printed labels	Rated 100°C minimum. Suitable for Plated steel surface. Adhered to Enclosure (Item 3).	cURus
15	53	DC Fan	Guangdong Shunde RongFang Electrical Appliance Co., Ltd.	3010	Rated 12Vdc, 0.1A	NR

NOTES:

- 1) Not all item numbers are indicated (called out) in the photos, as their location is obvious.
- 2) "Various" means any type, from any manufacturer that complies with the "Technical data and securement means" and meets the "Mark(s) of conformity" can be used.
- 3) Indicates specific marks to be verified, which assures the agreed level of surveillance for the component. "NR" - indicates Unlisted and only visual examination is necessary. "See 5.0" indicates Unlisted components or assemblies to be evaluated periodically refer to section 5.0 for details.

## 5.0 Critical Unlisted CEC Components

No Unlisted CEC components are used in this report.

DRAFT



## 6.0 Critical Features

Recognized Component - A component part, which has been previously evaluated by an accredited certification body with restrictions and must be evaluated as part of the basic product considering the restrictions as specified by the Conditions of Acceptability.

Listed Component - A component part, which has been previously Listed or Certified by an accredited Certification Organization with no restrictions and is used in the intended application within its ratings.

Unlisted Component - A part that has not been previously evaluated to the appropriate designated component standard. It may also be a Listed or Recognized component that is being used outside of its evaluated Listing or component recognition.

Critical Features/Components - An essential part, material, subassembly, system, software, or accessory of a product that has a direct bearing on the product's conformance to applicable requirements of the product standard.

Construction Details - For specific construction details, reference should be made to the photographs and descriptions. All dimensions are approximate unless specified as exact or within a tolerance. In addition to the specific construction details described in this Report, the following general requirements also apply.

1. Spacing - In primary circuits, 1.6 mm minimum spacing are maintained through air and over surfaces of insulating material between current-carrying parts of opposite polarity and between such current-carrying parts and dead-metal parts or low voltage isolated circuits, and 3.1mm spacing between such current-carrying parts and metal enclosure. Refer to Illustration 1 for areas to verify.
2. Mechanical Assembly - Components such as switches, fuseholders, connectors, wiring terminals and display lamps are mounted and prevented from shifting or rotating by the use of lockwashers, starwashers, or other mounting format that prevents turning of the component.
3. Corrosion Protection - All ferrous metal parts are protected against corrosion by painting, plating or the equivalent.
4. Accessibility of Live Parts - All uninsulated live parts in primary circuitry are housed within a metal or non-metallic enclosure constructed with no openings other than those specifically described in Sections 4 and 5.
5. Grounding - All exposed dead-metal parts and all dead-metal parts within the enclosure that are exposed are connected to the equipment grounding terminal.
6. Polarized Connection - This product is not provided with a polarized power supply connection.
7. Internal Wiring - Internal wiring is routed away from sharp or moving parts. Internal wiring leads terminating in soldered connections are made mechanically secure prior to soldering. Recognized Component separable (quick disconnect) connectors of the positive detent type, closed loop connectors, or other types specifically described in the text of this report are also acceptable as internal wiring terminals. At points where internal wiring passes through metal walls or partitions, the wiring insulation is protected against abrasion or damage by plastic bushings or grommets.
8. Schematics - Refer to Illustration No. 2-2c for schematics requiring verification during Field Representative Inspection Audits.
9. Markings - The product is marked by labelling system (refer to item 52 of section 4.0) to Enclosure as follows: applicant's name/brand name, model number, date of manufacture, electrical ratings (Refer to Illustration No. 3).
10. Cautionary Markings - The following are required to be marked on the appliance by labelling system (refer to item 52 of section 4.0): "HOUSEHOLD USE ONLY", "DO NOT IMMERSE IN WATER", "60 MINUTES "ON" IN A TWO HOUR PERIOD", "NE PAS IMMÉRGER", "POUR USAGE DOMESTIQUE SEULEMENT", "60 MINUTES EN « MARCHÉ » DANS UNE PÉRIODE DE DEUX HEURES", or equivalent wordings. The minimum text height is 2.4mm. (Refer to Illustration No. 3).
11. Carton Marking - A carton (individual marketing container) for the appliance is marked with "Household Use Only" or Household Type" to indicate that the appliance is intended for household type usage. The marking is located on at least one outside surface and appear in lettering not less than 6.4mm high.
12. Installation, Operating and Safety Instructions - Instructions for installation and use of this product are provided by the manufacturer. "IMPORTANT SAFEGUARDS" and "SAVE THESE INSTRUCTIONS" shall be emphasized and in letter not less than 4.8mm high.

## 7.0 Illustrations

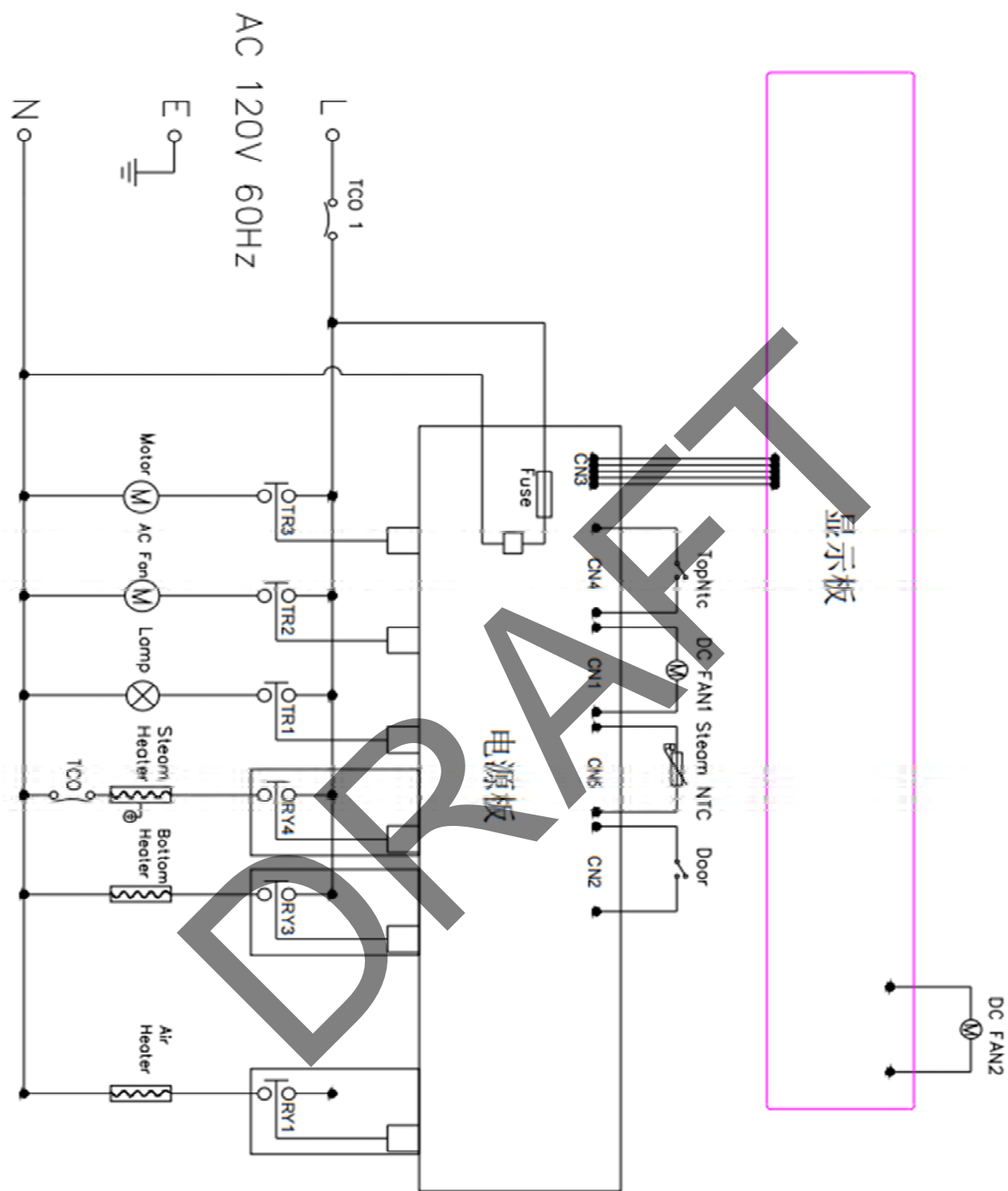
### Illustration 1 - Spacings

Points of measurement	Limit
Between opposite polarity	$\geq 1.6\text{mm}$
Between uninsulated live part and dead metal	$\geq 3.1\text{mm}$

DRAFT

7.0 Illustrations

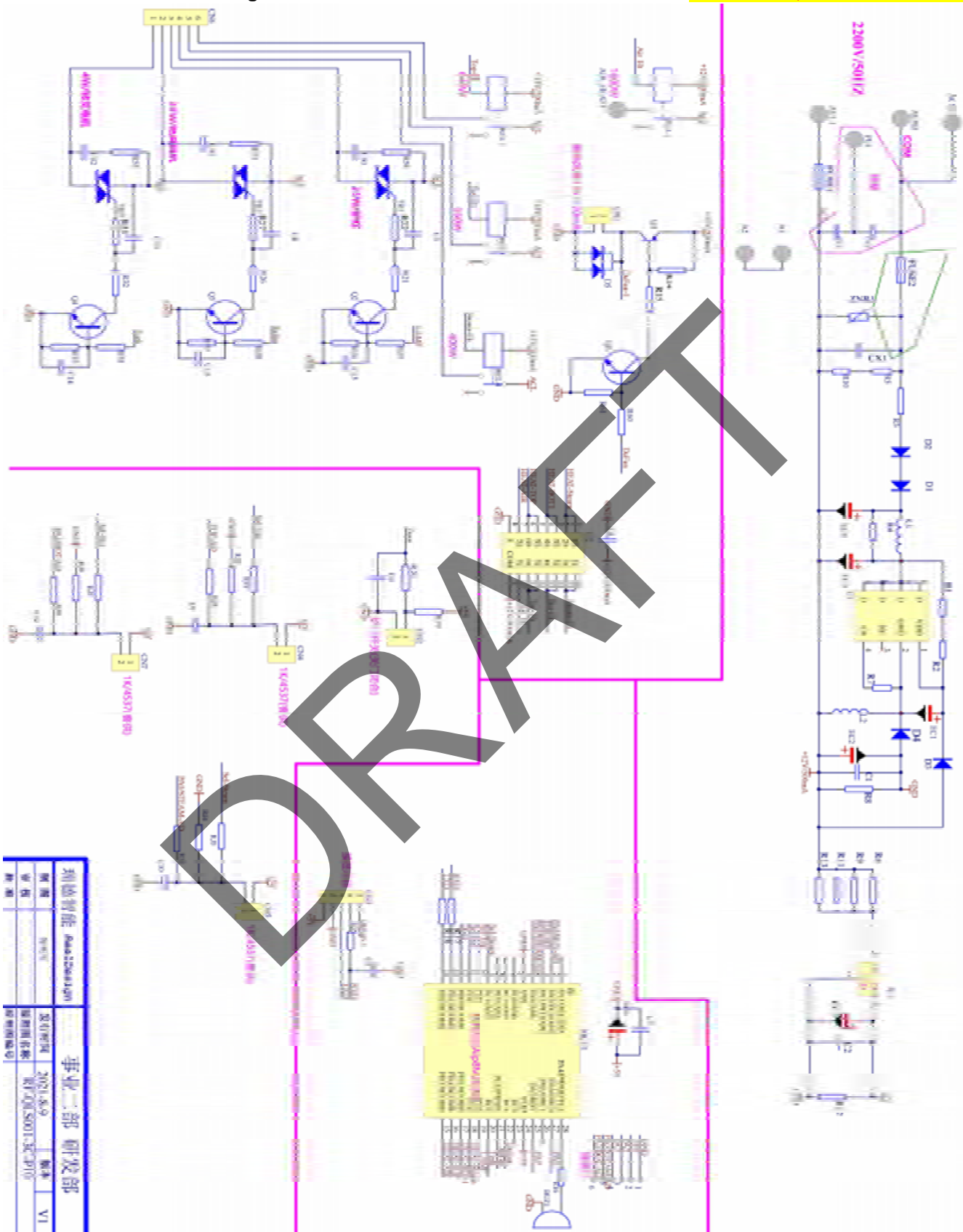
Illustration 2 - Circuit Diagram



7.0 Illustrations

Illustration 2a - Circuit Diagram

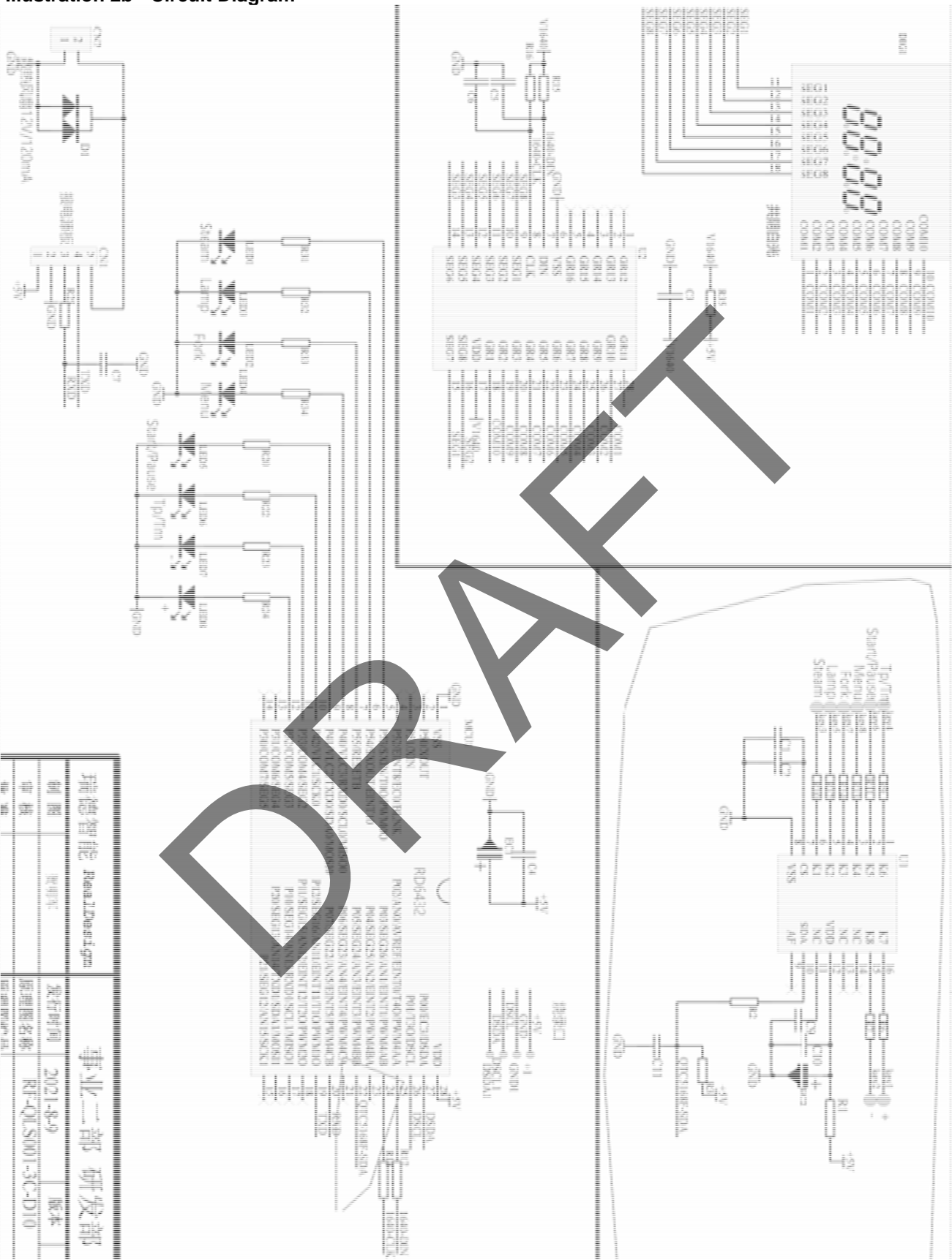
电压改120V, 60Hz



利德智能	led-intel.com.cn	事业部	研发部
日期	2021.6.9	版本	V1
编制人	何文	审核人	何文
编制日期	2021.6.9	审核日期	
编制地点	佛山	审核地点	

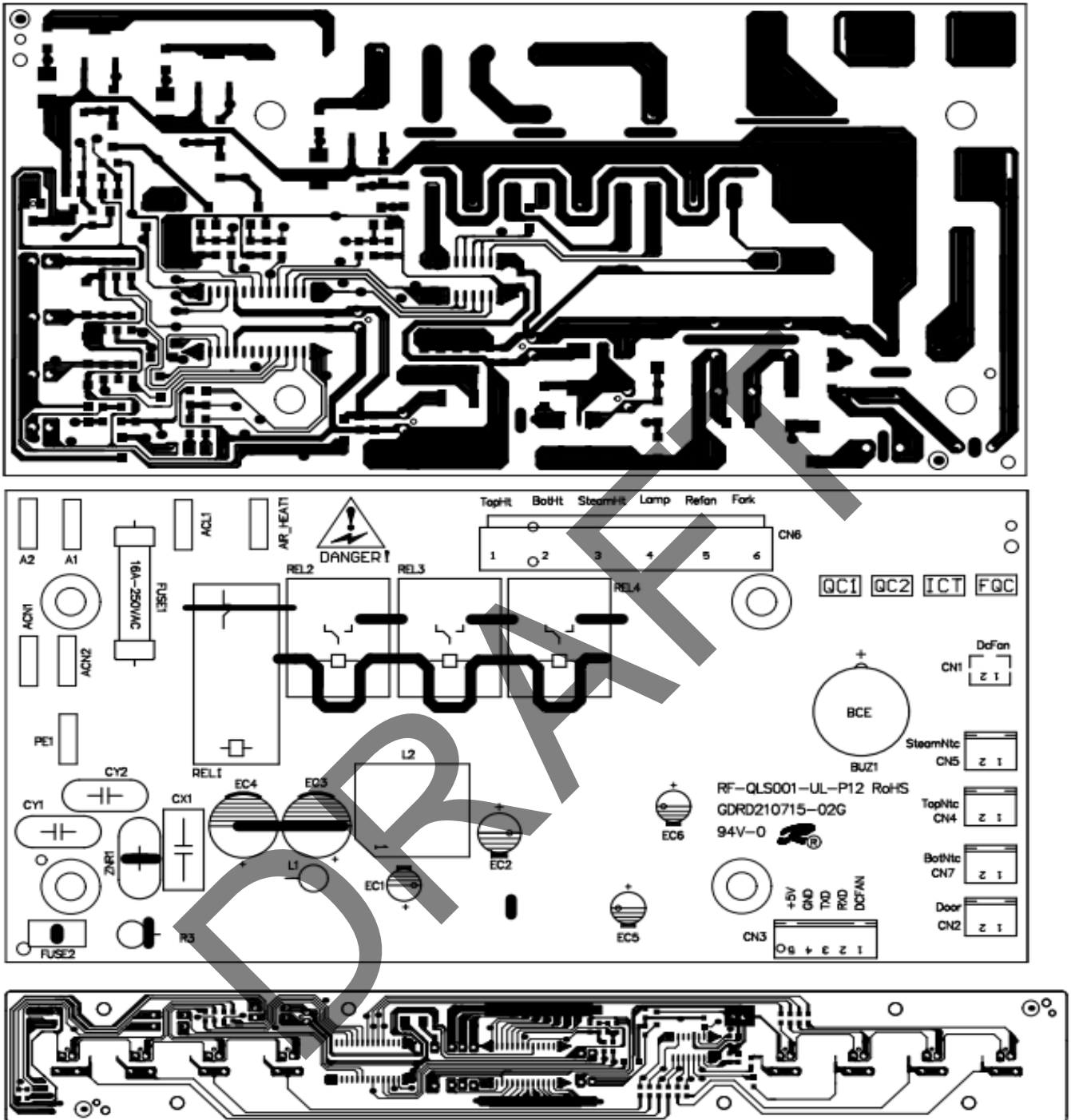
**7.0 Illustrations**

**Illustration 2b - Circuit Diagram**



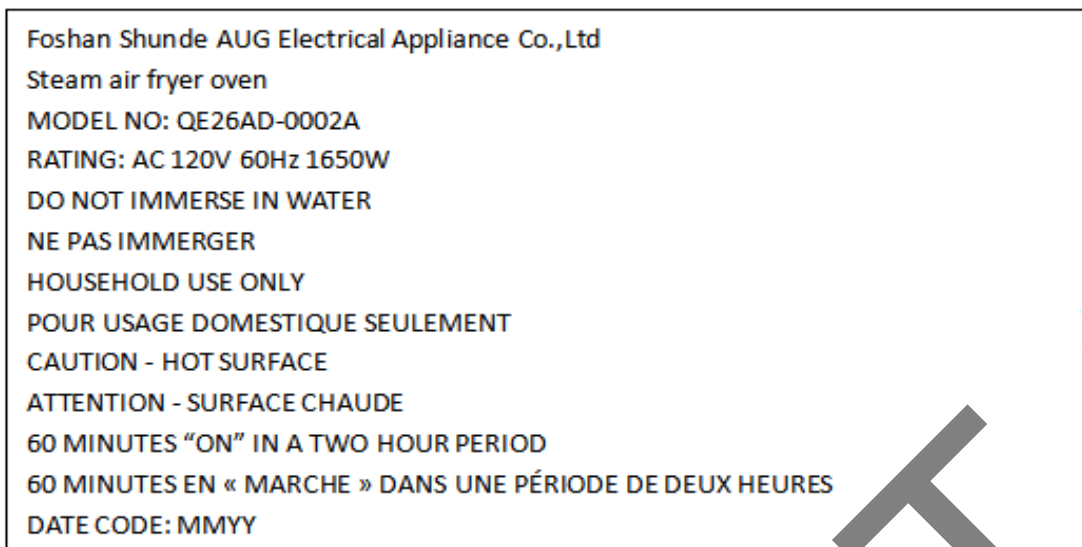
7.0 Illustrations

Illustration 2c - Circuit Diagram



## 7.0 Illustrations

### Illustration 3 - Rating and Caution Marking Artwork



Marking Location: Adhered to Enclosure

Date Code: MMY, MM for production of month, YY for production of year.

All of the caution words 's tallness  $\geq 2.4$  mm

The cETLus Certification Mark and Control Number must be included in the above Rating Plate.

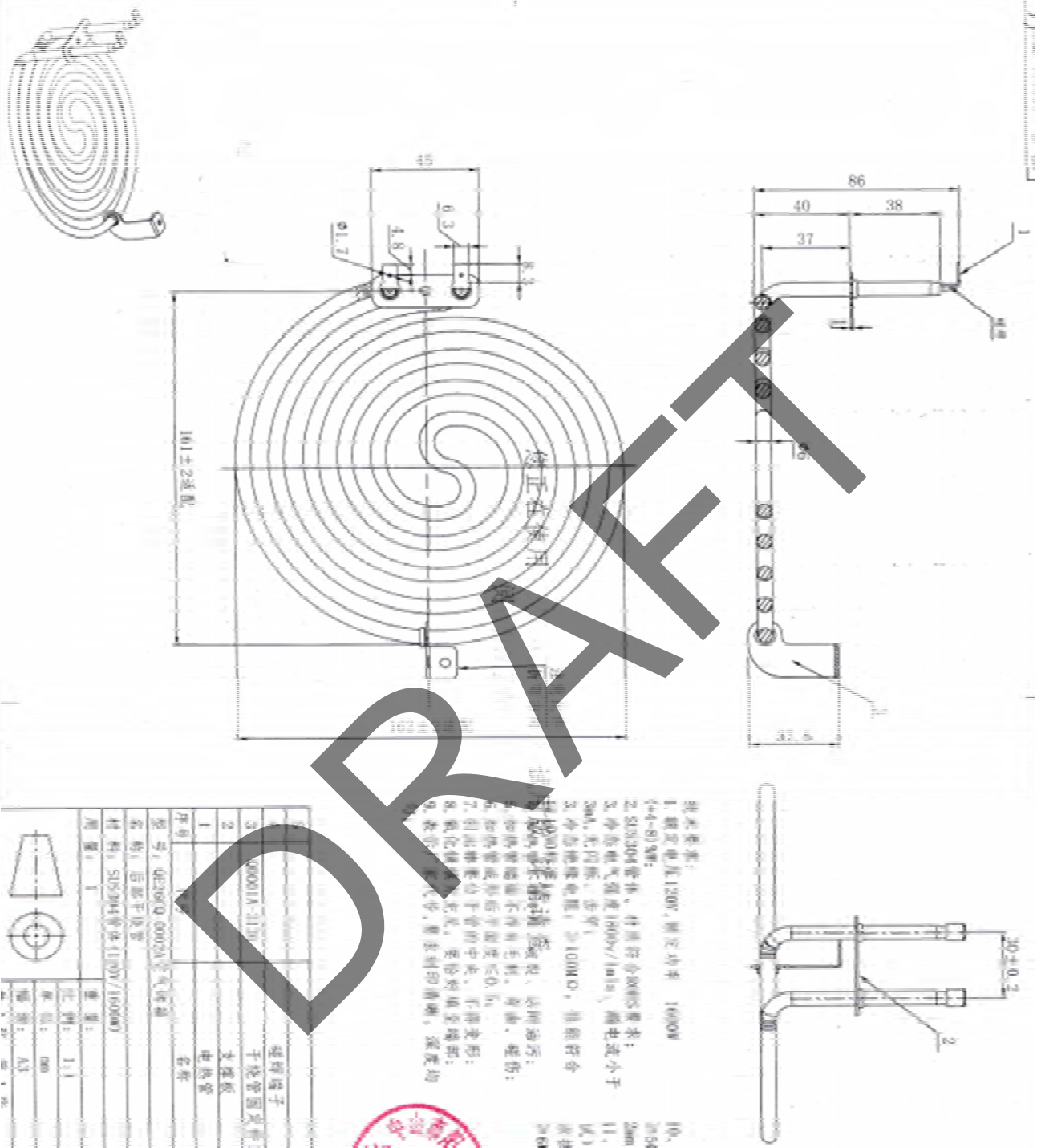
Standard(s) writing: Conforms to UL STD.1026 and Certified to CSA STD. C22.2 No.64 must be included in the above Rating Plate.

5021716 for Foshan Shunde AUG Electrical Appliance Co.,Ltd

DRAFT

7.0 Illustrations

Illustration 4 - Heater Assembly Drawing  
 Model YD 120V 1600W

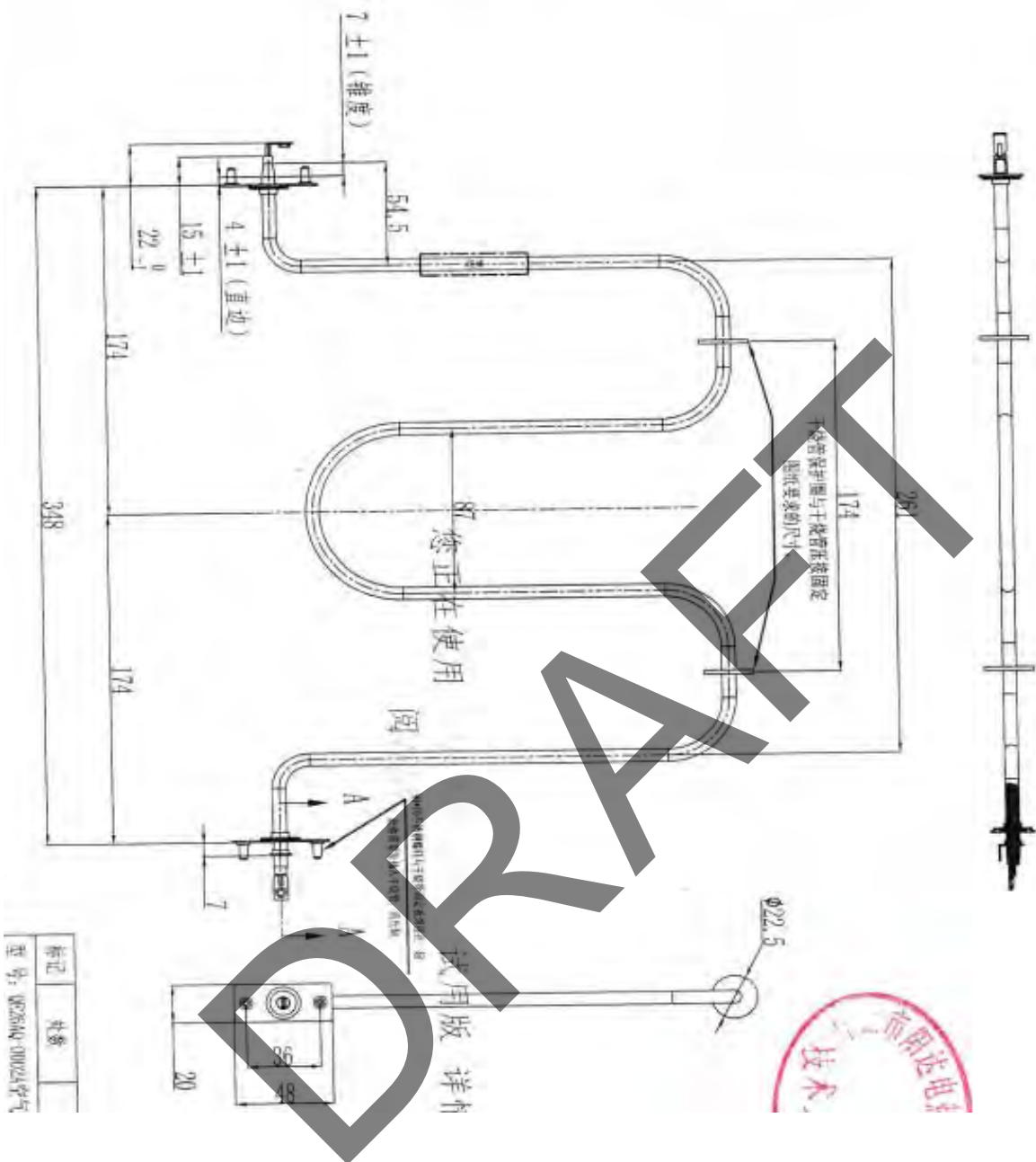




7.0 Illustrations

Illustration 4a - Heater Assembly Drawing

Model YD 120V 550W



## 7.0 Illustrations

### Illustration 4b - Heater Assembly Drawing

Model ????

还有一个heater

DRAFT

**9.0 Correlation Page For Multiple Listings**

The following products, which are identical to those identified in this report except for model number and Listee name, are authorized to bear the ETL label under provisions of the Intertek Multiple Listing Program.

BASIC LISTEE	Foshan Shunde AUG Electrical Appliance Co.,Ltd
Address	Unit 7, No.2 Xinhui Road, Wusha Village, Daliang Town, Shunde, Foshan City, Guangdong Province
Country	China
Product	Steam air fryer oven

MULTIPLE LISTEE 1	None
Address	多重列名的申请表?
Country	
Brand Name	

ASSOCIATED MANUFACTURER	
Address	
Country	

MULTIPLE LISTEE 1 MODELS	BASIC LISTEE MODELS

MULTIPLE LISTEE 2	None
Address	
Country	
Brand Name	

ASSOCIATED MANUFACTURER	
Address	
Country	

MULTIPLE LISTEE 2 MODELS	BASIC LISTEE MODELS

MULTIPLE LISTEE 3	None
Address	
Country	
Brand Name	

ASSOCIATED MANUFACTURER	
Address	
Country	

MULTIPLE LISTEE 3 MODELS	BASIC LISTEE MODELS